

- NOTES:
1. TOPOGRAPHIC INFORMATION PROVIDED BY KGIS DATA.
 2. THIS PROPERTY CONTAINS APPROXIMATELY 42.07 ACRES.
 3. CURRENT ZONING: RN-1/HP
PREVIOUS ZONING: RP-1 (OPERATIVE)
 4. SPECIAL USE FOR THIS PROPERTY TO ALLOW THE FOLLOWING:
 - a) PROPOSED SANCTUARY
 - b) PODIUM PARKING LOT TO MEET PARKING MINIMUMS FOR PROPOSED SANCTUARY
 5. A MAXIMUM OF 25% OF TREES MAY BE REMOVED ACCORDING TO THE TREE PROTECTION ORDINANCE.

PLACE OF WORSHIP PARKING TABLE REQUIREMENTS

MINIMUM
 0.25 SPACES PER SEAT IN MAIN ASSEMBLY
 = 2,231 SEATS X 0.25 SPACES
 = 558 SPACES

MAXIMUM
 0.50 SPACES PER SEAT IN MAIN ASSEMBLY
 = 2,231 SEATS X 0.50 SPACES
 = 1,116 SPACES

ACCESSIBLE SPACES
 PARKING SPACES PROVIDED: 401-500
 ACCESSIBLE SPACES REQUIRED: 2 VAN + 7 CAR = 9 SPACES

EXISTING PARKING SPACES
 STANDARD SPACES: 289
 PERVIOUS SPACES: 24
 ACCESSIBLE SPACES: 9
 TOTAL EXISTING SPACES: 322

PARKING SPACES APPROVED UNDER 11-C-22-SU
 EXISTING SPACES TO BE REMOVED: 17
 PROPOSED SPACES (ALLOWED): 23
 EXISTING SPACES: 298
 TOTAL PARKING SPACES: 304

UNSTRIPED PARKING AREA SPACES: 188
PARKING TO BE REMOVED WITH NEW SANCTUARY: 105
TOTAL WITH SANCTUARY BUILDOUT: 387

PARKING SPACES PROPOSED WITH PARKING PODIUM AND REDESIGN OF CURRENTLY APPROVED PARKING LOTS:

EXISTING SPACES TO REMAIN: 125
 PROPOSED PODIUM PARKING SPACES: 318
 PROPOSED REDESIGNED SPACES: 374
 TOTAL PARKING SPACES WITH SANCTUARY BUILDOUT: 817

9-G-24-SU
7/29/2024

SITE DATA:

EXISTING SITE= 42.07 ACRES.
 EXISTING IMPERVIOUS= 6.03 ACRES.
 EXISTING SURFACE PARKING AREA= 238,637.18 SF
 PROPOSED IMPERVIOUS= 2.86 ACRES.
 TOTAL POST DEVELOPMENT VEHICULAR USE AREA= 6.49 ACRES
 TOTAL POST DEVELOPMENT IMPERVIOUS AREA= 8.89 ACRES
 EXISTING DISTURBED AREA= 16.28 ACRES
 PROPOSED DISTURBED AREA= 2.52 ACRES

	WITHIN HP OVERLAY	OUTSIDE HP OVERLAY	TOTAL SITE
DISTURBED AREA	14.84 AC	4.77 AC	19.61 AC
UNDISTURBED AREA	15.44 AC	7.02 AC	22.46 AC



OWNER/DEVELOPER
CALVARY CHAPEL OF KNOXVILLE
 3330 W. GOVERNOR JOHN SEVIER HWY
 KNOXVILLE, TN 37920
 PHONE: (865) 680-9791

BATSON, HIMES, NORVELL & POE
 REGISTERED ENGINEERS & LAND SURVEYORS
 4334 PAPERMILL DRIVE
 KNOXVILLE, TENNESSEE 37909
 PHONE: (865) 588-6472
 FAX: (865) 588-6473
 email@bhn-p.com

DESIGNED	DBH	DATE	REVISION	APPR.	NO.	DATE	REVISION	APPR.
DRAWN	KPW							
CHECKED	DBH							

SCALE
 HORIZONTAL: 1" = 100'
 VERTICAL: 2" INTERVAL

DATE
 7/29/24

DEED REFERENCES: PLAT INSTR# 201208240012541
 DEED REFERENCES: DEED INSTR# 201804170061462

0' 100' 200' 300' 400'
 1"=100'

EXISTING CONDITIONS FOR
CALVARY CHAPEL OF KNOXVILLE - PARKING LOT EXPANSION 2

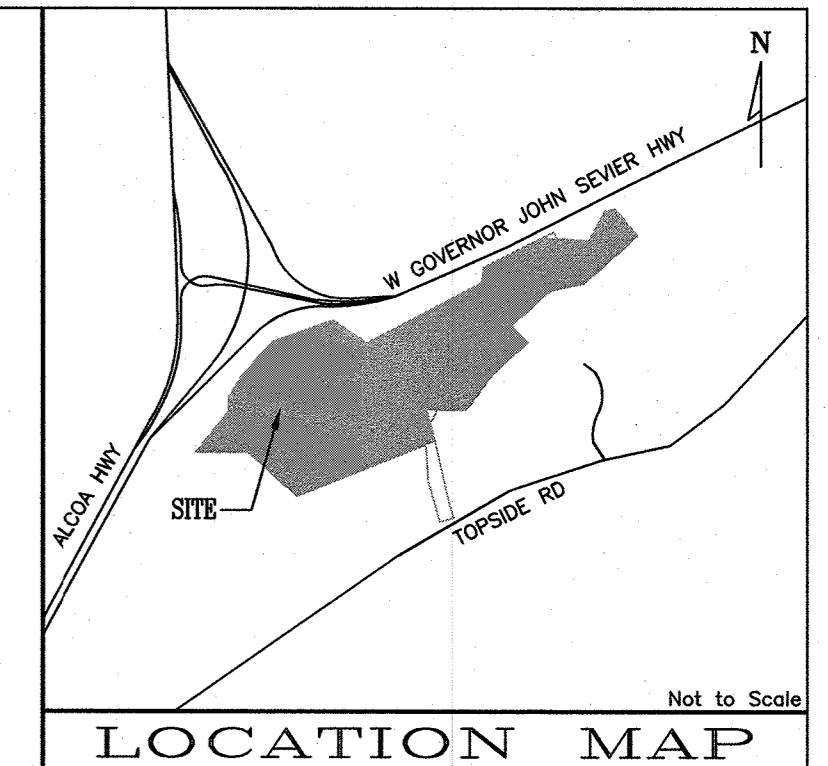
TAX MAP 147 PARCEL 30
 DISTRICT 25, KNOX COUNTY, TENNESSEE
 CITY BLOCK 25919, 25TH WARD, CITY OF KNOXVILLE

25130-EXP2-EX

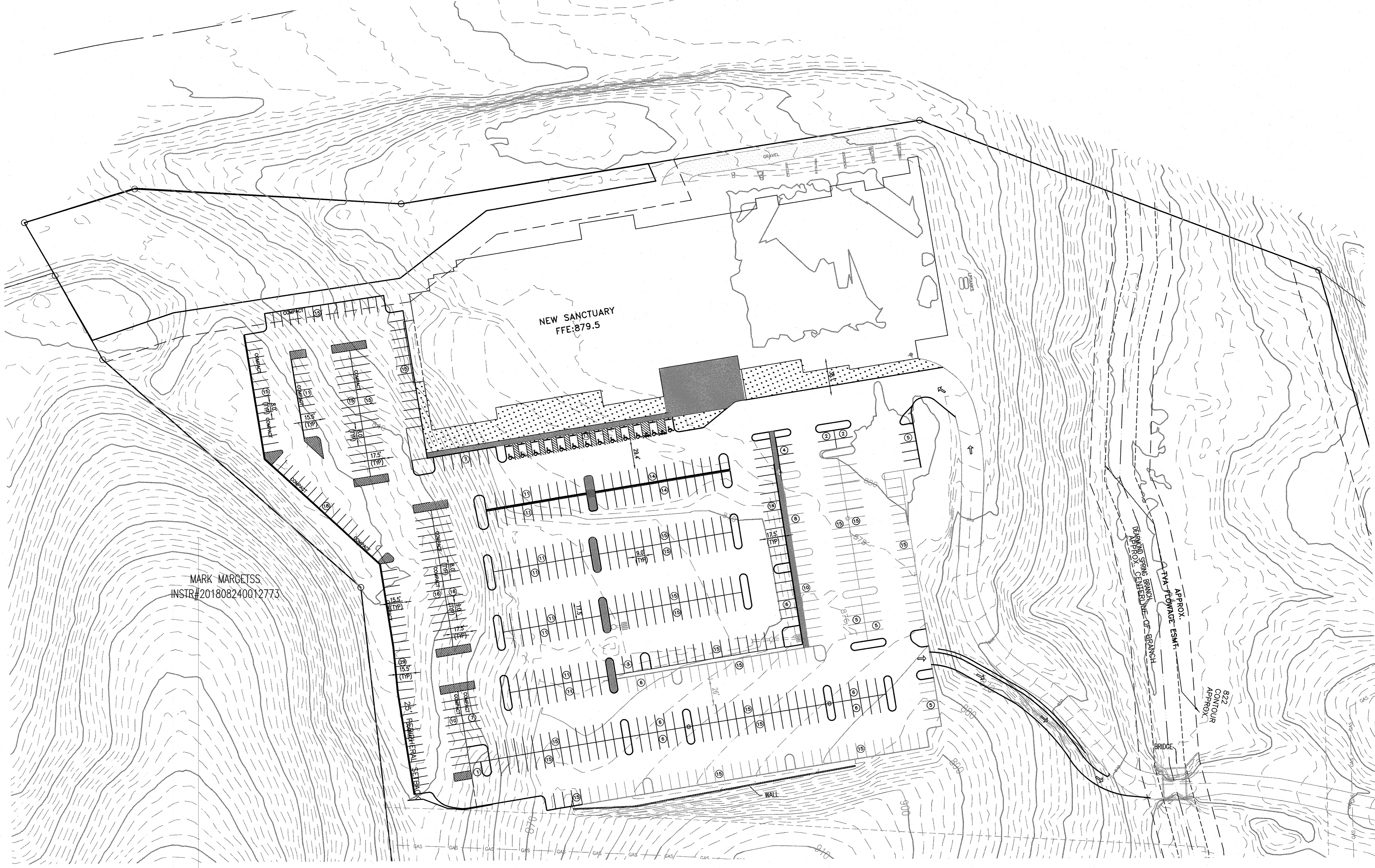
SHEET 1 OF 8 SHEET(S)
 Q:\25130\SANCTUARY EXPANSION\25130-SANCTUARY EXPANSION-PARKING PODIUM.DWG

	WITHIN HP OVERLAY	OUTSIDE HP OVERLAY	TOTAL SITE
DISTURBED AREA	14.84 AC	4.77 AC	19.61 AC
UNDISTURBED AREA	15.44 AC	7.02 AC	22.46 AC

SITE DATA:
 EXISTING SITE= 42.07 ACRES.
 EXISTING IMPERVIOUS= 6.03 ACRES.
 EXISTING SURFACE PARKING AREA= 238,637.18 SF
 PROPOSED IMPERVIOUS= 2.86 ACRES.
 TOTAL POST DEVELOPMENT VEHICULAR USE AREA= 6.49 ACRES
 TOTAL POST DEVELOPMENT IMPERVIOUS AREA= 8.89 ACRES
 EXISTING DISTURBED AREA= 16.28 ACRES
 PROPOSED DISTURBED AREA= 2.52 ACRES



- NOTES:**
1. TOPOGRAPHIC INFORMATION PROVIDED BY KGIS DATA.
 2. THIS PROPERTY CONTAINS APPROXIMATELY 42.07 ACRES.
 3. CURRENT ZONING: RN-1/HP
PREVIOUS ZONING: RP-1 (OPERATIVE)
 4. SPECIAL USE FOR THIS PROPERTY TO ALLOW THE FOLLOWING:
 - a) PROPOSED SANCTUARY
 - b) PODIUM PARKING LOT TO MEET PARKING MINIMUMS FOR PROPOSED SANCTUARY
 5. A MAXIMUM OF 25% OF TREES MAY BE REMOVED ACCORDING TO THE TREE PROTECTION ORDINANCE.



PLACE OF WORSHIP PARKING TABLE REQUIREMENTS

MINIMUM	
0.25 SPACES PER SEAT IN MAIN ASSEMBLY	= 2,231 SEATS X 0.25 SPACES
	= 558 SPACES
MAXIMUM	
0.50 SPACES PER SEAT IN MAIN ASSEMBLY	= 2,231 SEATS X 0.50 SPACES
	= 1,116 SPACES
ACCESSIBLE SPACES	
PARKING SPACES PROVIDED:	401-500
ACCESSIBLE SPACES REQUIRED:	2 VAN + 7 CAR = 9 SPACES
EXISTING PARKING SPACES	
STANDARD SPACES:	289
PERVIOUS SPACES:	24
ACCESSIBLE SPACES:	9
TOTAL EXISTING SPACES:	322
PARKING SPACES APPROVED UNDER 11-C-22-SU	
EXISTING SPACES TO BE REMOVED:	17
PROPOSED SPACES (ALLOWED):	23
EXISTING SPACES:	288
TOTAL PARKING SPACES:	304
UNSTRIPED PARKING AREA SPACES:	188
PARKING TO BE REMOVED WITH NEW SANCTUARY:	105
TOTAL WITH SANCTUARY BUILDOUT:	387
PARKING SPACES PROPOSED WITH PARKING PODIUM AND REDESIGN OF CURRENTLY APPROVED PARKING LOTS:	
EXISTING SPACES TO REMAIN:	125
PROPOSED PODIUM PARKING SPACES:	318
PROPOSED REDESIGNED SPACES:	374
TOTAL PARKING SPACES WITH SANCTUARY BUILDOUT:	817



OWNER/DEVELOPER
CALVARY CHAPEL OF KNOXVILLE
 3330 W. GOVERNOR JOHN SEVIER HWY
 KNOXVILLE, TN 37920
 PHONE: (865) 680-9791

BATSON, HIMES, NORVELL & POE
 REGISTERED ENGINEERS & LAND SURVEYORS
 4334 PAPERMILL DRIVE
 KNOXVILLE, TENNESSEE 37909
 PHONE: (865) 588-6472
 FAX: (865) 588-6473
 email@bhn-p.com

DESIGNED	DBH	NO.	DATE	REVISION	APPR.	NO.	DATE	REVISION	APPR.
DRAWN	KPW								
CHECKED	DBH								

SCALE
 HORIZONTAL: 1" = 50'
 VERTICAL: 2" INTERVAL
 DATE
 7/29/24

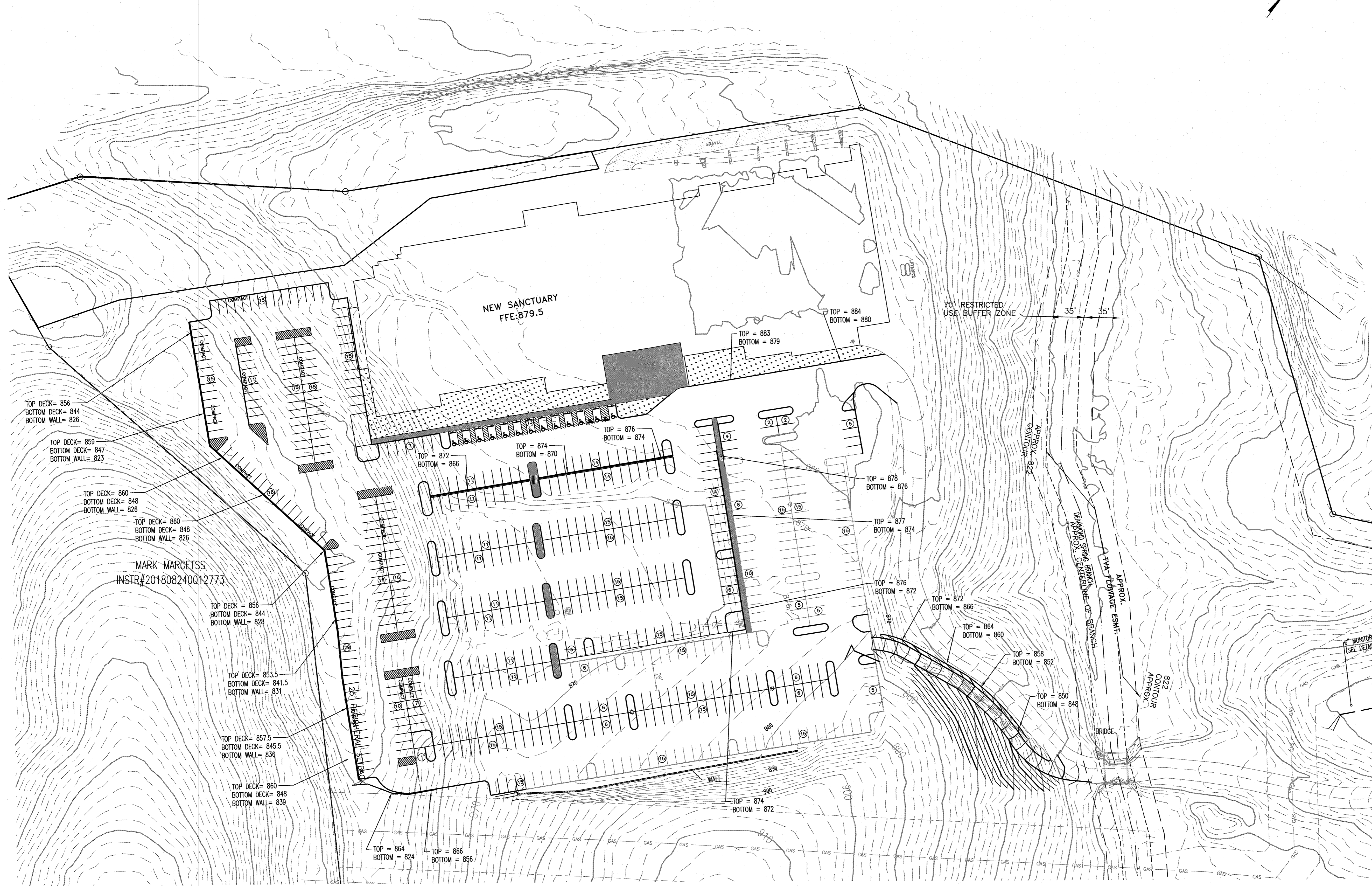
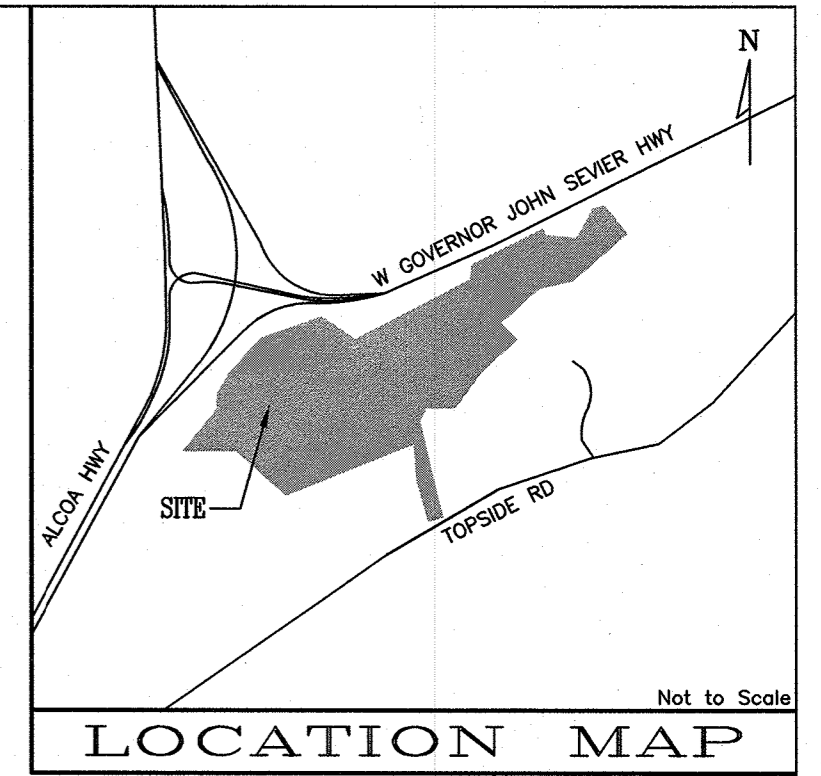
DEED REFERENCES: PLAT INSTR# 201208240012541
 DEED REFERENCES: DEED INSTR# 201804170061462

EXISTING CONDITIONS FOR CALVARY CHAPEL OF KNOXVILLE - PARKING LOT EXPANSION 2
 TAX MAP 147 PARCEL 30
 DISTRICT 25, KNOX COUNTY, TENNESSEE
 CITY BLOCK 25919, 25TH WARD, CITY OF KNOXVILLE

25130-EXP2-SP
 SHEET 2 OF 3 SHEET(S)
 Q:\25130-SANCTUARY EXPANSION-PARKING PODIUM.DWG

	WITHIN HP OVERLAY	OUTSIDE HP OVERLAY	TOTAL SITE
DISTURBED AREA	14.84 AC	4.77 AC	19.61 AC
UNDISTURBED AREA	15.44 AC	7.02 AC	22.46 AC

SITE DATA:
 EXISTING SITE= 42.07 ACRES.
 EXISTING IMPERVIOUS= 6.03 ACRES.
 EXISTING SURFACE PARKING AREA= 238,637.18 SF
 PROPOSED IMPERVIOUS= 2.86 ACRES.
 TOTAL POST DEVELOPMENT VEHICULAR USE AREA= 6.49 ACRES
 TOTAL POST DEVELOPMENT IMPERVIOUS AREA= 8.89 ACRES
 EXISTING DISTURBED AREA= 16.28 ACRES
 PROPOSED DISTURBED AREA= 2.52 ACRES



- NOTES:**
- TOPOGRAPHIC INFORMATION PROVIDED BY KGIS DATA.
 - THIS PROPERTY CONTAINS APPROXIMATELY 42.07 ACRES.
 - CURRENT ZONING: RN-1/HP
PREVIOUS ZONING: RP-1 (OPERATIVE)
 - SPECIAL USE FOR THIS PROPERTY TO ALLOW THE FOLLOWING:
 - PROPOSED SANCTUARY
 - PODIUM PARKING LOT TO MEET PARKING MINIMUMS FOR PROPOSED SANCTUARY
 - A MAXIMUM OF 25% OF TREES MAY BE REMOVED ACCORDING TO THE TREE PROTECTION ORDINANCE.

PLACE OF WORSHIP PARKING TABLE REQUIREMENTS

MINIMUM
 0.25 SPACES PER SEAT IN MAIN ASSEMBLY
 = 2,231 SEATS X 0.25 SPACES
 = 558 SPACES

MAXIMUM
 0.50 SPACES PER SEAT IN MAIN ASSEMBLY
 = 2,231 SEATS X 0.50 SPACES
 = 1,116 SPACES

ACCESSIBLE SPACES
 PARKING SPACES PROVIDED: 401-500
 ACCESSIBLE SPACES REQUIRED: 2 VAN + 7 CAR = 9 SPACES

EXISTING PARKING SPACES
 STANDARD SPACES: 289
 IMPERVIOUS SPACES: 24
 ACCESSIBLE SPACES: 9
 TOTAL EXISTING SPACES: 322

PARKING SPACES APPROVED UNDER 11-C-22-SU

EXISTING SPACES TO BE REMOVED: 17
 PROPOSED SPACES (ALLOWED): 23
 EXISTING SPACES: 298
 TOTAL PARKING SPACES: 304
 UNSTRIPED PARKING AREA SPACES: 188
 PARKING TO BE REMOVED WITH NEW SANCTUARY: 105
 TOTAL WITH SANCTUARY BUILDOUT: 387

PARKING SPACES PROPOSED WITH PARKING PODIUM AND REDESIGN OF CURRENTLY APPROVED PARKING LOTS:
 EXISTING SPACES TO REMAIN: 125
 PROPOSED PODIUM PARKING SPACES: 318
 PROPOSED REDESIGNED SPACES: 374
 TOTAL PARKING SPACES WITH SANCTUARY BUILDOUT: 817



OWNER/DEVELOPER
CALVARY CHAPEL OF KNOXVILLE
 3330 W. GOVERNOR JOHN SEVIER HWY
 KNOXVILLE, TN 37920
 PHONE: (865) 680-9791

BATSON, HIMES, NORVELL & POE
 REGISTERED ENGINEERS & LAND SURVEYORS
 4334 PAPERMILL DRIVE
 KNOXVILLE, TENNESSEE 37909
 PHONE: (865) 588-6472
 FAX: (865) 588-6473
 email@bhn-p.com

DESIGNED	DBH	NO.	DATE	REVISION	APPR.	NO.	DATE	REVISION	APPR.
DRAWN	KPW								
CHECKED	DBH								

SCALE
 HORIZONTAL: 1" = 50'
 VERTICAL: 2" INTERVAL
 DATE
 7/29/24

DEED REFERENCES: PLAT INSTR# 201208240012541
 DEED REFERENCES: DEED INSTR# 201804170061462

 1"=50'

GRADING & DRAINAGE PLAN FOR
CALVARY CHAPEL OF KNOXVILLE -
PARKING LOT EXPANSION 2
 TAX MAP 147 PARCEL 30
 DISTRICT 25, KNOX COUNTY, TENNESSEE
 CITY BLOCK 25919, 25TH WARD, CITY OF KNOXVILLE

25130-EXP2-GP
 SHEET 3 OF 3 SHEET(S)
 G:\25130\SANCTUARY EXPANSION-25130-SANCTUARY EXPANSION-PARKING PODIUM.DWG



FRONT



BACK

9-G-24-SU
7/29/2024

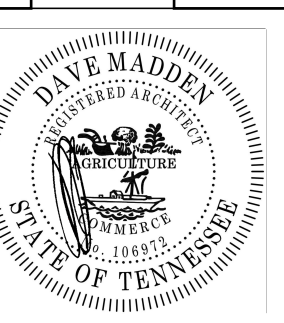
Revisions:

INITIAL SUBMITTAL

DAVE MADDEN
ARCHITECT
E-Mail: dmadden.daves6@gmail.com
Phone: 865-770-9496
3738 Parker Harrison Way, Knoxville, TN 37924

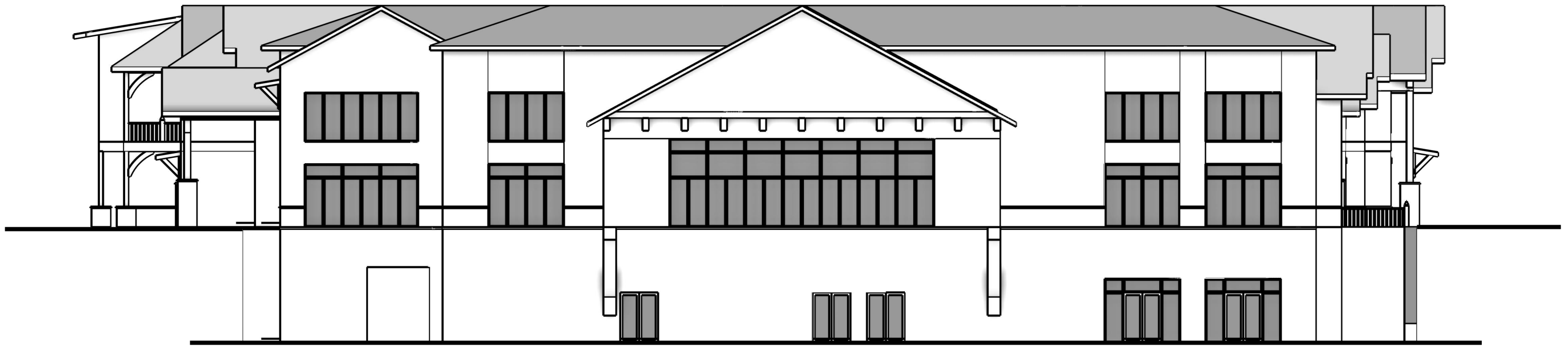
DMA
CALVARY KNOXVILLE
9950 MEET GOVERNOR JOHN SEVIER HIGHWAY
KNOXVILLE TN 37920

SITE INFORMATION
9950 N. GOVERNOR JOHN SEVIER HWY.
KNOXVILLE TN 37920
PLOT: PARKWAY AT PARCEL 30
CITY BLOCK 25 1 1 35TH AND CITY OF KNOXVILLE

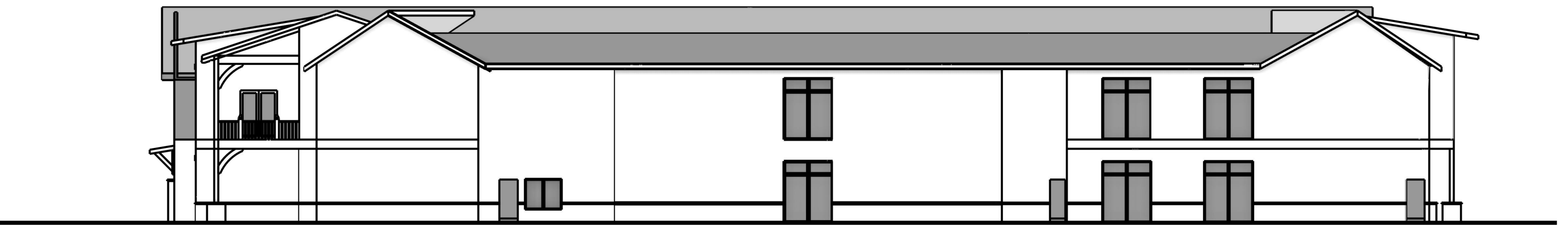


SCALE: 1/16" = 1'
Sheet Number
A 1.0

ALL RIGHTS RESERVED. THIS DRAWING IS THE PROPERTY OF DAVE MADDEN ARCHITECT. NO PART OF THIS DRAWING IS TO BE REPRODUCED OR TRANSMITTED IN ANY FORM OR BY ANY MEANS, ELECTRONIC OR MECHANICAL, INCLUDING PHOTOCOPYING, RECORDING, OR BY ANY INFORMATION STORAGE AND RETRIEVAL SYSTEM, WITHOUT THE WRITTEN PERMISSION OF DAVE MADDEN ARCHITECT.



LEFT



RIGHT

9-G-24-SU
7/29/2024

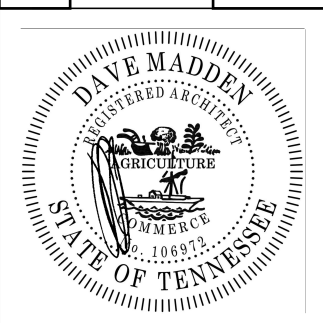
Revisions:

INITIAL SUBMITTAL

DMA
DAVE MADDEN
ARCHITECT
Phone 865-770-9496
E-Mail: madden.daves@gmail.com
3738 Parker Harrison Way, Knoxville, TN 37924

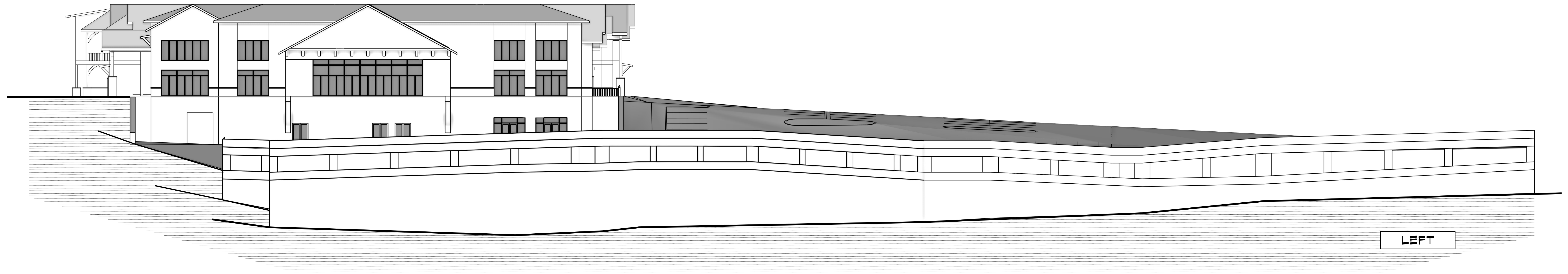
CALVARY
KNOXVILLE
9950 AEBT GOVERNOR JOHN SEVIER HIGHWAY
KNOXVILLE TN 37920

SITE INFORMATION
9950 A. GOVERNOR JOHN SEVIER HWY.
KNOXVILLE TN 37920
PLOT: TAX MAP 44 PARCELS 30
AND 31
CITY BLOCK 25 11 2571 AACD CITY OF KNOXVILLE



SCALE: 1/16" = 1'
Sheet Number
A 2.0

ALL DESIGN, CONSTRUCTION AND CONSTRUCTION MANAGEMENT SERVICES PROVIDED BY DAVE MADDEN ARCHITECT, AN ARCHITECTURAL FIRM LICENSED UNDER THE ARCHITECTURE ACT OF 1967, CHAPTER 102, TITLE 62, K.S.A. 62-102. THE STATE BOARD OF ARCHITECTURE HAS REVIEWED AND APPROVED THE DESIGN AND CONSTRUCTION MANAGEMENT SERVICES PROVIDED BY DAVE MADDEN ARCHITECT, AN ARCHITECTURAL FIRM LICENSED UNDER THE ARCHITECTURE ACT OF 1967, CHAPTER 102, TITLE 62, K.S.A. 62-102. THE STATE BOARD OF ARCHITECTURE HAS REVIEWED AND APPROVED THE DESIGN AND CONSTRUCTION MANAGEMENT SERVICES PROVIDED BY DAVE MADDEN ARCHITECT, AN ARCHITECTURAL FIRM LICENSED UNDER THE ARCHITECTURE ACT OF 1967, CHAPTER 102, TITLE 62, K.S.A. 62-102.



9-G-24-SU
7/29/2024

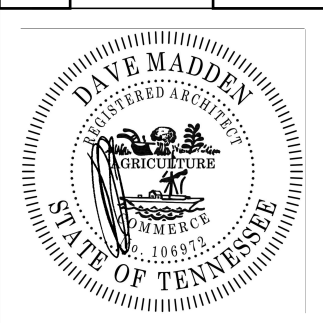
Revisions:

INITIAL SUBMITTAL

DAVE MADDEN ARCHITECT
 DMA
 Phone 865-770-9496 E-Mail: madden.daves@gmail.com
 3735 Parker Harrison Way, Knoxville, TN 37924

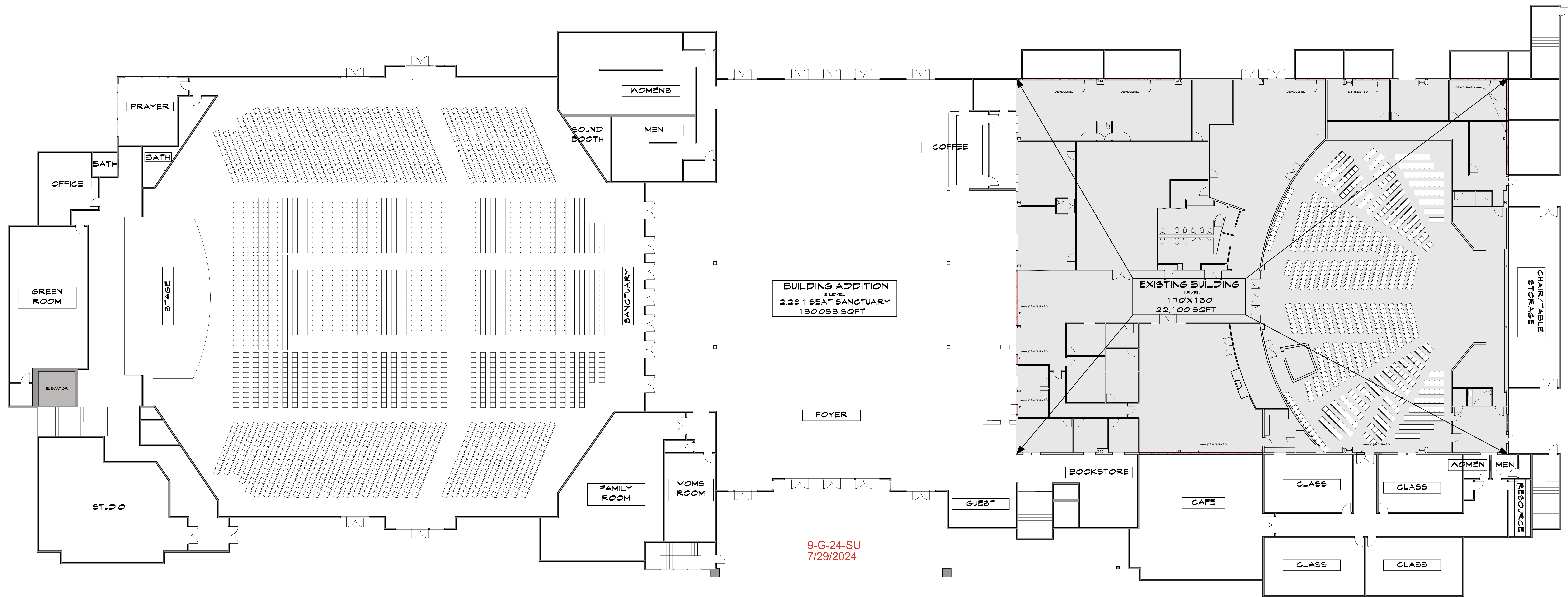
CALVARY KNOXVILLE
 9950 MEET GOVERNOR JOHN SEVIER HIGHWAY
 KNOXVILLE TN 37920

SITE INFORMATION
 9950 N. GOVERNOR JOHN SEVIER HWY.
 KNOXVILLE TN 37920
 PLOT: TAX MAP 44 PARCELS 30
 CITY BLOCK 25 11 2574 AACD CITY OF KNOXVILLE



SCALE: 1/16" = 1'
 Sheet Number
A 3.0

ALL RIGHTS RESERVED. THIS DOCUMENT IS THE PROPERTY OF DAVE MADDEN ARCHITECT. ANY REPRODUCTION OR DISTRIBUTION OF THIS DOCUMENT WITHOUT THE WRITTEN PERMISSION OF DAVE MADDEN ARCHITECT IS PROHIBITED. THE USER OF THIS DOCUMENT AGREES TO HOLD DAVE MADDEN ARCHITECT HARMLESS FROM AND AGAINST ALL LIABILITY, INCLUDING REASONABLE ATTORNEY'S FEES, FOR ANY AND ALL DAMAGES, LOSSES, AND EXPENSES, INCLUDING REASONABLE ATTORNEY'S FEES, THAT MAY BE INCURRED BY THE USER OF THIS DOCUMENT. THE USER OF THIS DOCUMENT AGREES TO HOLD DAVE MADDEN ARCHITECT HARMLESS FROM AND AGAINST ALL LIABILITY, INCLUDING REASONABLE ATTORNEY'S FEES, FOR ANY AND ALL DAMAGES, LOSSES, AND EXPENSES, INCLUDING REASONABLE ATTORNEY'S FEES, THAT MAY BE INCURRED BY THE USER OF THIS DOCUMENT.



BUILDING ADDITION
 3 LEVEL
 2,231 SEAT SANCTUARY
 130,033 SQFT

EXISTING BUILDING
 1 LEVEL
 170' X 130'
 22,100 SQFT

9-G-24-SU
 7/29/2024

MAIN LEVEL
 64,026 SQFT

Revisions:

DMA
 Phone: 662.703.6686
 3735 Parker Harmon Way, Knoxville, TN 37924
 E-Mail: madden.dave@gmail.com

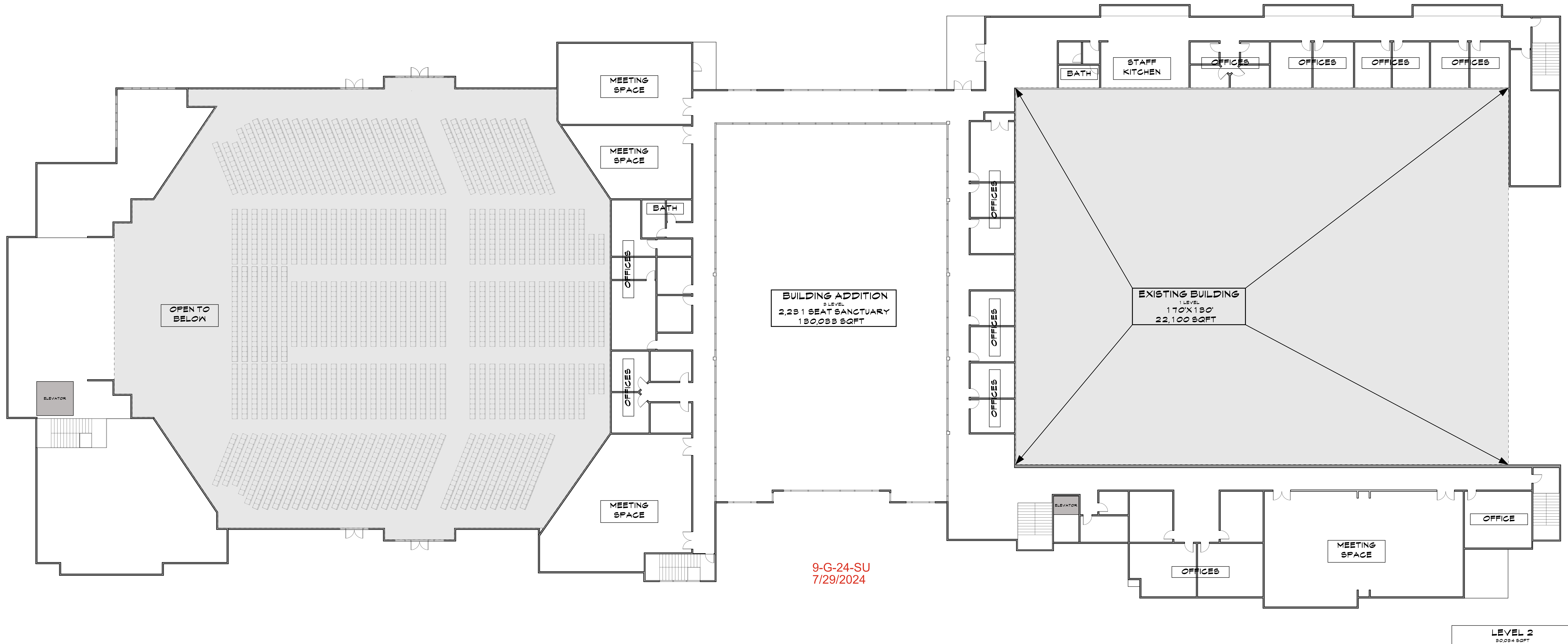
DAVE MADDEN ARCHITECT

CALVARY KNOXVILLE
 8850 N. GOVERNOR JOHN SEVIER HWY.
 KNOXVILLE, TN 37920
 DIRECTOR OF CONSTRUCTION
 CITY BLOCK 28414, 28TH AVENUE CITY OF KNOXVILLE

SITE INFORMATION
 8850 N. GOVERNOR JOHN SEVIER HWY.
 KNOXVILLE, TN 37920
 DIRECTOR OF CONSTRUCTION
 CITY BLOCK 28414, 28TH AVENUE CITY OF KNOXVILLE

SEAL
 DAVE MADDEN
 ARCHITECT
 REGISTERED PROFESSIONAL ARCHITECT
 STATE OF TENNESSEE
 NO. 12573

SANCTUARY SEAT COUNT: 2,231
 BUILDING SQFT: 64,026
 MAIN LEVEL ADDITION: 64,026
 EXISTING: 22,100
 LEVEL 2: 80,084
 LOWER LEVEL: 58,478
 TOTAL: 192,188
 SCALE: 3/8" = 1'
 Sheet Number: **A 1.0**



LEVEL 2
30,034 SQFT

BUILDING ADDITION
3 LEVEL
2,231 SEAT SANCTUARY
130,033 SQFT

EXISTING BUILDING
1 LEVEL
170'X130'
22,100 SQFT

9-G-24-SU
7/29/2024

Revisions:

	INITIAL SUBMITTAL

DAVE MADDEN
ARCHITECT

Phone: 662.70.3486
E-Mail: madden.dave@gmail.com

DMA

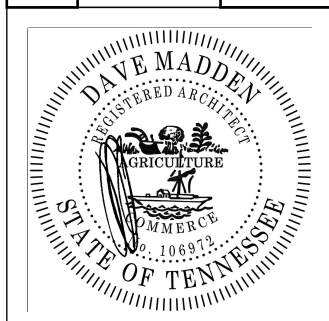
CALVARY
KNOXVILLE

9850 AEF GOVERNOR JOHN SEVIER HWY.
KNOXVILLE, TN 37920

SITE INFORMATION

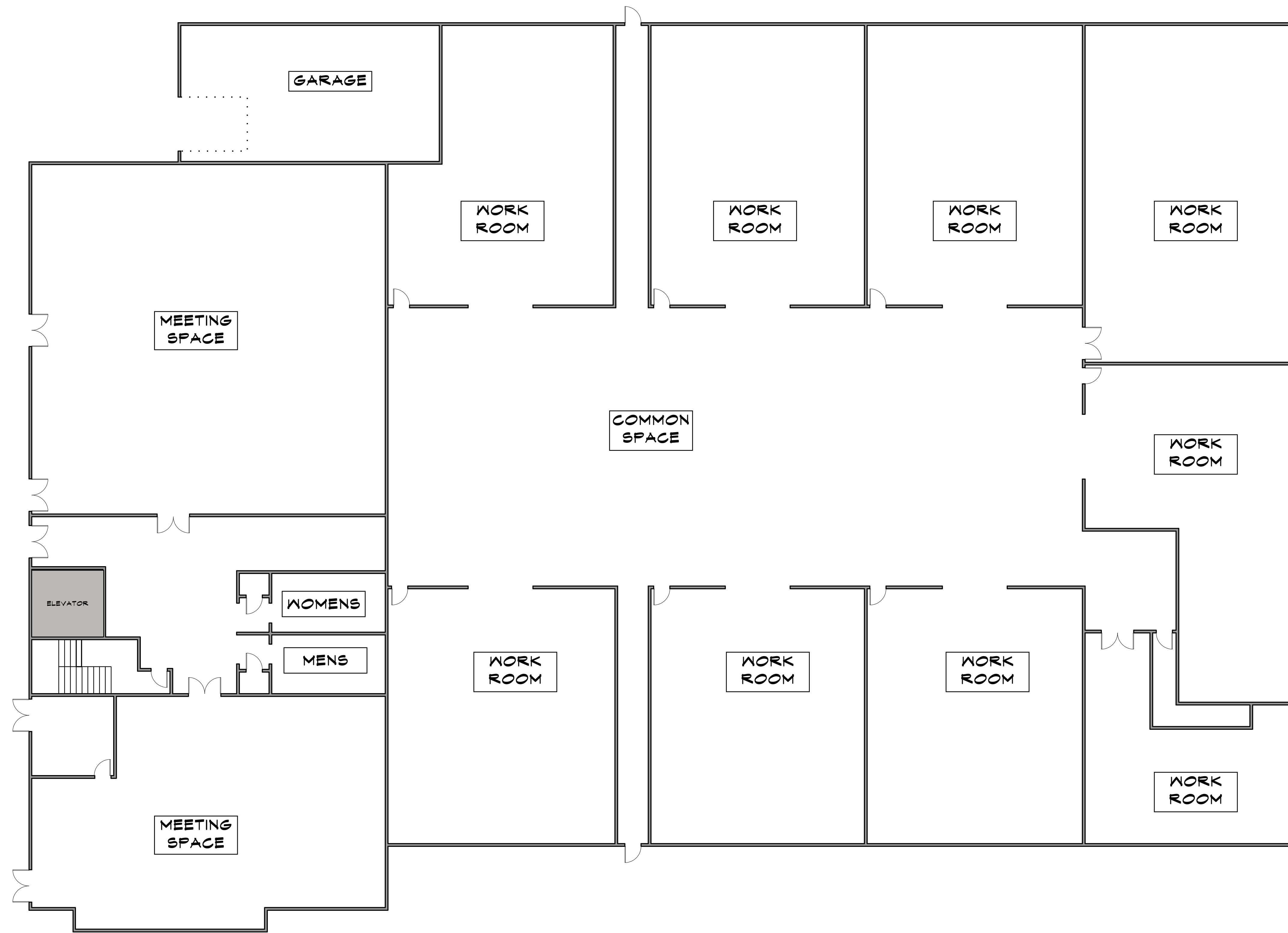
9850 AEF GOVERNOR JOHN SEVIER HWY.
KNOXVILLE, TN 37920

PROJECT: CALVARY KNOXVILLE
CITY BLOCK 28414, 28TH AVENUE CITY OF KNOXVILLE

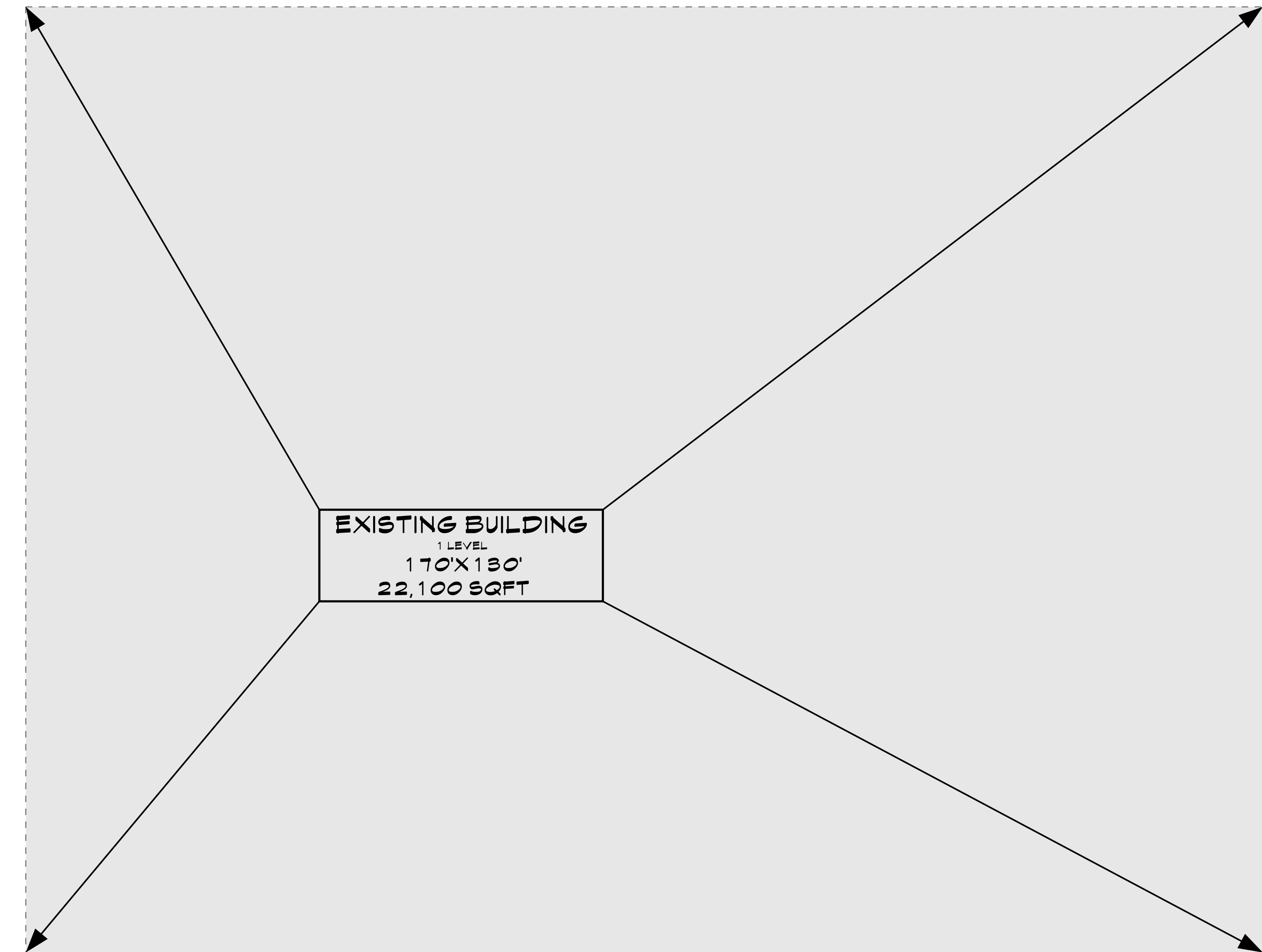


SANCTUARY SEAT COUNT:	2,231
BUILDING SQFT	
MAIN LEVEL:	
ADDITION:	64,028
EXISTING:	22,100
LEVEL 2:	30,034
LOWER LEVEL:	55,478
TOTAL:	152,133

SCALE: 3/8" = 1'
Sheet Number
A 2.0



BUILDING ADDITION
 3 LEVEL
 2,231 SEAT SANCTUARY
 130,033 SQFT



9-G-24-SU
 7/29/2024

LOWER LEVEL
 33,473 SQFT

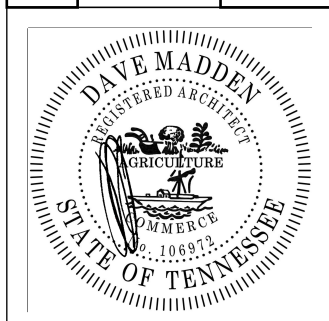
Revisions:

DMA
 Phone: 865.770.9498
 3735 Platter Harmon Way, Knoxville, TN 37924
 E-Mail: madden.dave@gmail.com

DAVE MADDEN
 ARCHITECT

CALVARY
 KNOXVILLE
 9850 AEF GOVERNOR JOHN SEVIER HWY.
 KNOXVILLE, TN 37920

SITE INFORMATION
 9850 AEF GOVERNOR JOHN SEVIER HWY.
 KNOXVILLE, TN 37920
 PROJECT NO. 24-0000-0000-0000
 CITY BLOCK 2841.1, 28TH AWARD CITY OF KNOXVILLE



SANCTUARY SEAT COUNT:	2,231
BUILDING SQFT	
ADDITION: 64,028	
EXISTING: 22,100	
LEVEL 2:	80,034
LOWER LEVEL:	33,473
TOTAL:	112,133

SCALE: 3/8" = 1'
 Sheet Number
A 3.0