


IMPERVIOUS INFORMATION
EXISTING IMPERVIOUS AREA SHOWN PER 1996 PLAT: 1.61 AC
PROPOSED IMPERVIOUS AREA: 0.95 AC
TOTAL IMPERVIOUS AREA REDUCTION: 0.66 AC

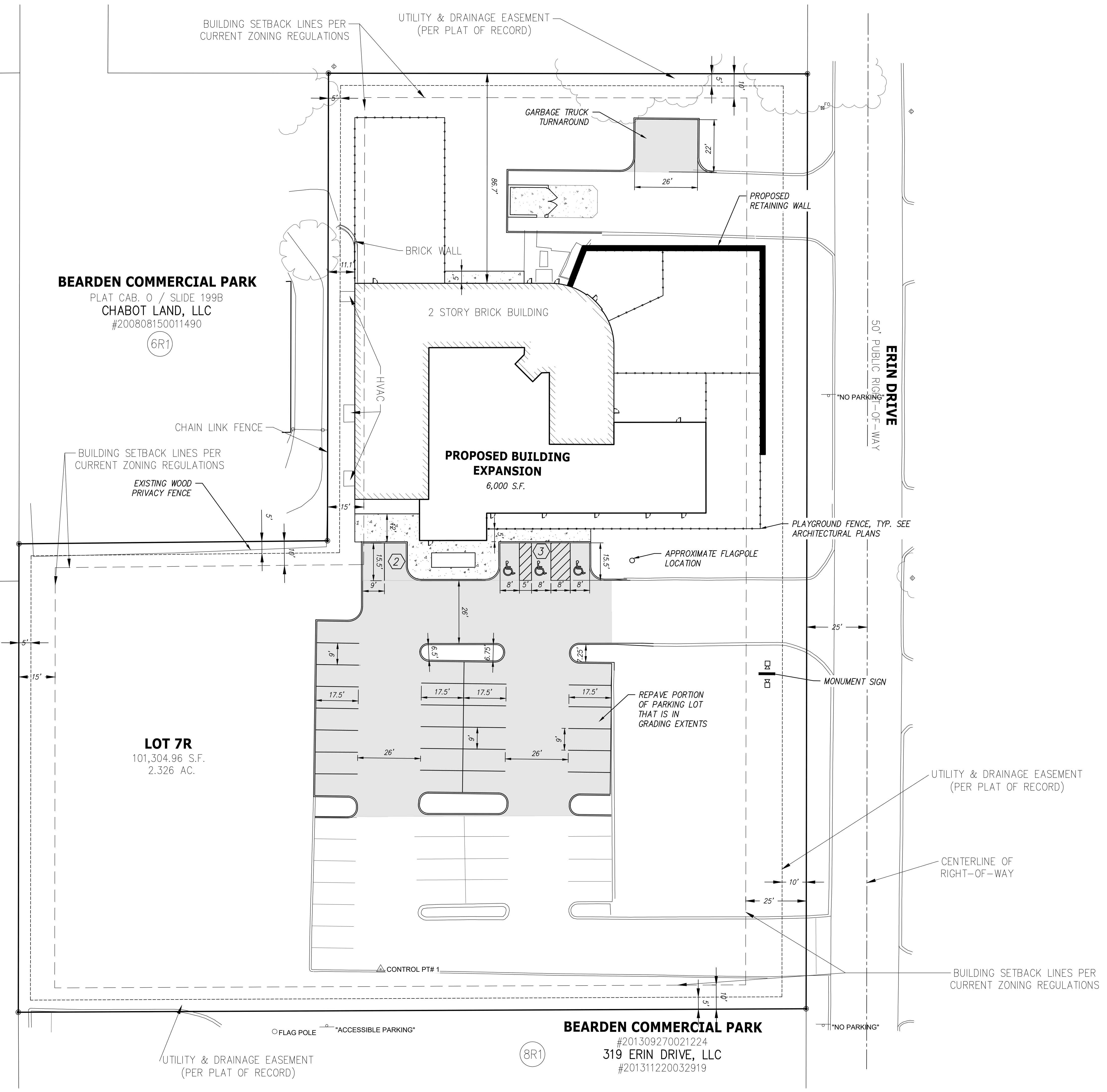
PARKING SUMMARY :
EXISTING PARKING PERMITTED BY COK DATED 1-25-2002
TOTAL EXISTING PARKING: 60 SPACES
TOTAL EXISTING ACCESSIBLE SPACE = 4 (2 VAN AND 2 STANDARD)
REQUIRED PER CITY OF KNOXVILLE:
PRE-SCHOOL/KINDERGARTEN:
MINIMUM 1 SPACE PER CLASSROOM, MAXIMUM 2 SPACES PER CLASSROOM.
REQUIRED NUMBER OF PROPOSED ACCESSIBLE SPACES FOR 26 TO 50 SPACES = 2 (1 VAN AND 1 STANDARD)
PROPOSED:
14 CLASSROOMS
TOTAL REQUIRED PARKING = 14 SPACES MIN, 28 SPACES MAX
TOTAL PARKING PROVIDED = 50 SPACES
TOTAL ACCESSIBLE SPACES PROVIDED = 3 (2 VAN AND 1 STANDARD)

9-E-24-SU
7/29/2024

NOTES:
1. REFER TO SHEET C002 FOR GENERAL NOTES.

REVISIONS	DATE
 CANNON & CANNON INC TEL 865.670.8555 10095 Investment Drive WWW.CANNON-CANNON.COM Suite 120 Knoxville, TN 37932	
CLIENT: PRIMROSE SCHOOL FRANCHISING COMPANY 3200 WINDY HILL ROAD, SUITE 1200 E ATLANTA, GA 30339	
PROJECT: PRIMROSE SCHOOL KNOXVILLE 315 ERIN DRIVE KNOXVILLE, TN 37919	

SITE LAYOUT PLAN	
CCI PROJECT NO.	01797-0002
DRAWING DATE	JULY 29, 2024
PROJECT MANAGER:	A. KOHNTOPP
DRAWN BY:	R. EDENS
PRELIMINARY FOR REVIEW ONLY	
C101	



BEARDEN COMMERCIAL PARK
PLAT CAB. 0 / SLIDE 199B
CHABOT LAND, LLC
#200808150011490
(6R1)

LOT 7R
101,304.96 S.F.
2.326 AC.

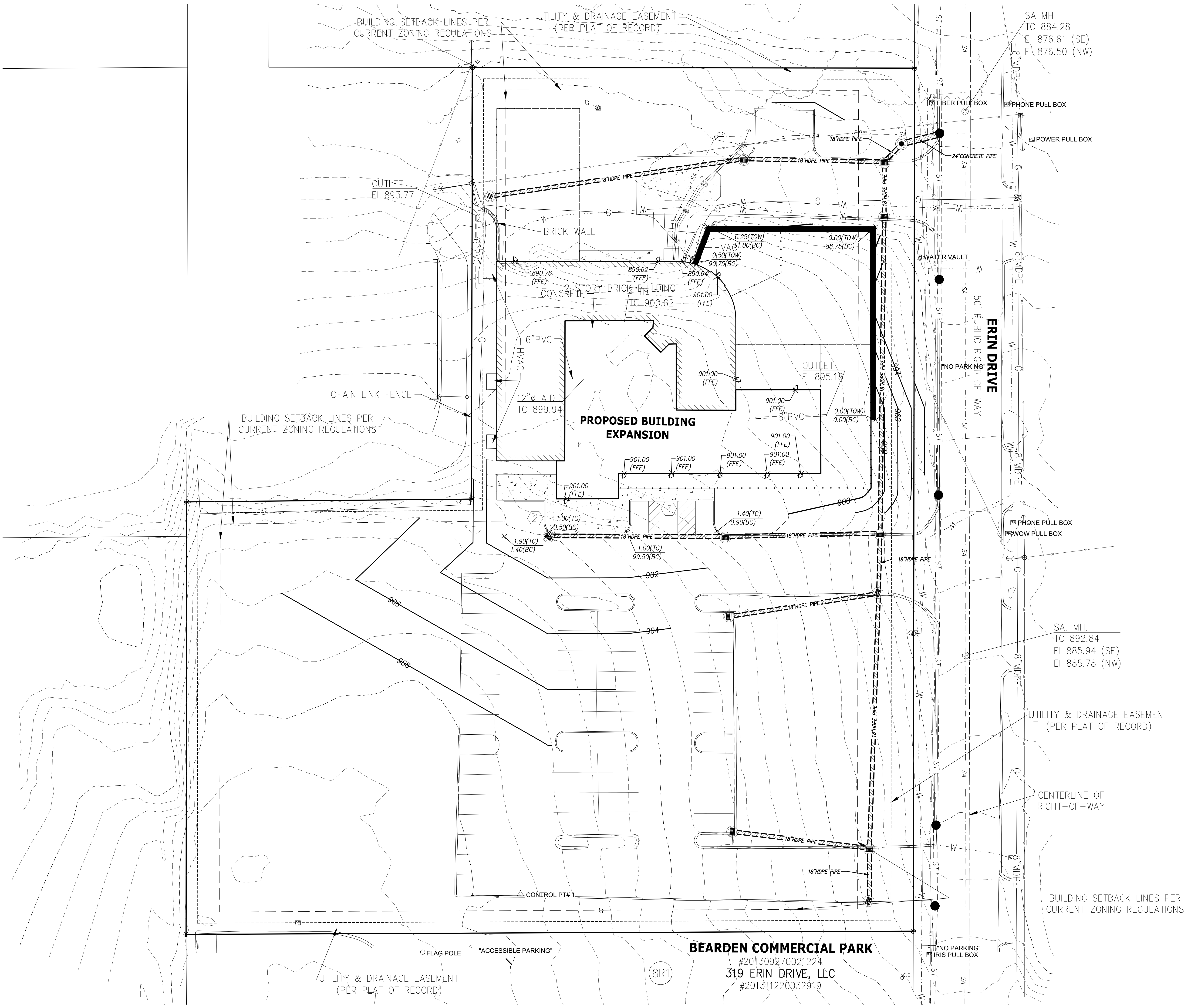
BEARDEN COMMERCIAL PARK
#201309270021224
319 ERIN DRIVE, LLC
#201311220032919
(8R1)

BEARDEN COMMERCIAL PARK - UNIT 2
PLAT CAB. E / SLIDE 129A
RUFUS H. SMITH, JR. & CO.
D.B. 2216 / PG. 1052
(3R)

BEARDEN COMMERCIAL PARK - UNIT 2
PLAT CAB. E / SLIDE 129B
BELCHER PROPERTIES, L.P.
#201612290041279
(4)



9-E-24-SU
7/29/2024



- NOTES:**
- REFER TO SHEET C002 FOR GENERAL NOTES.
 - EXISTING STORMWATER INFRASTRUCTURE IN THE ROW IS APPROXIMATE LOCATION OF THE CITY OF KNOXVILLE'S PROPOSED FUTURE STORMWATER IMPROVEMENTS.

REVISIONS	DATE
CANNON & CANNON INC TEL 865.670.8555 10095 Investment Drive WWW.CANNON-CANNON.COM Suite 120 Knoxville, TN 37932	

CLIENT:
PRIMROSE SCHOOL FRANCHISING COMPANY
 3200 WINDY HILL ROAD, SUITE 1200 E
 ATLANTA, GA 30339

PROJECT:
PRIMROSE SCHOOL KNOXVILLE
 315 ERIN DRIVE
 KNOXVILLE, TN 37919

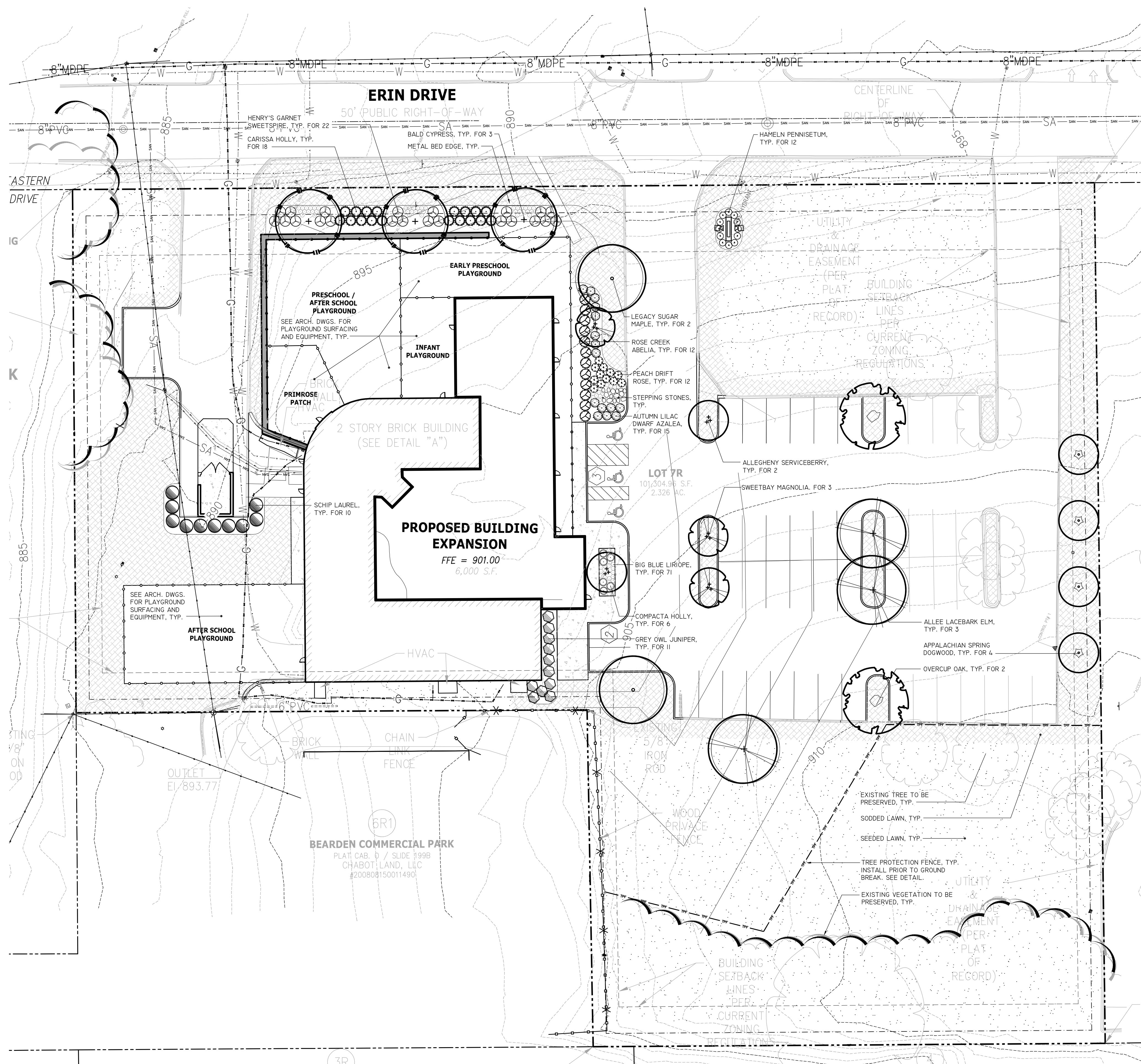
SITE GRADING AND DRAINAGE PLAN

PRELIMINARY FOR REVIEW ONLY

CCI PROJECT NO.	01797-0002
DRAWING DATE	JULY 29, 2024
PROJECT MANAGER:	A. KOHNTOPP
DRAWN BY:	R. EDENS

C201

BEARDEN COMMERCIAL PARK
 #201309270021224
 319 ERIN DRIVE, LLC
 #201311220032919



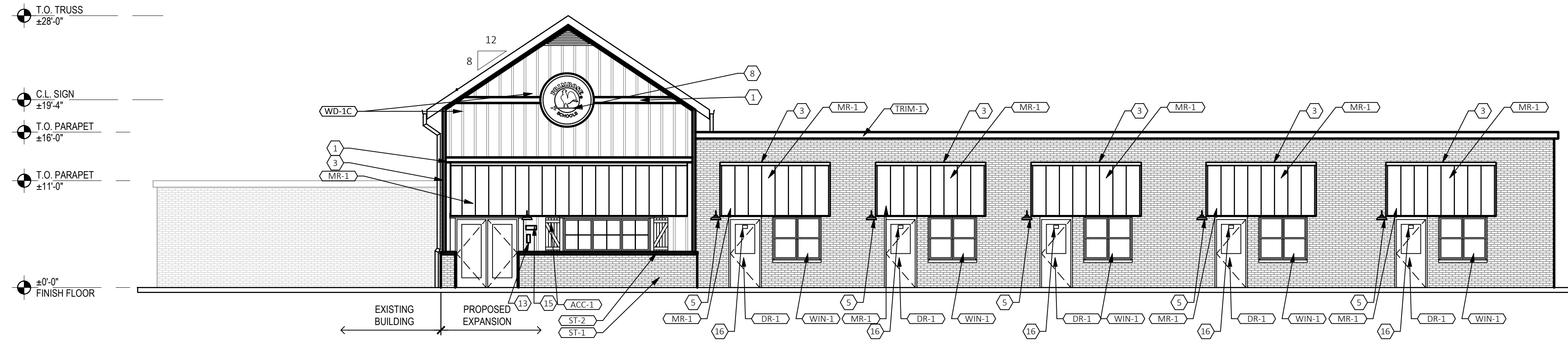
QUANTITY	SYMBOL	COMMON NAME	BOTANICAL NAME	ROOTS	MIN. SIZE @ INSTALLATION	REMARKS
DECIDUOUS TREES						
2	ASM	Legacy Sugar Maple	<i>Acer saccharum</i> 'Legacy'	B&B	2" Cal.	Specimen
2	ALS	Allegheny Serviceberry MT	<i>Amelanchier laevis</i>	B&B	8' Ht.	Specimen, Multi-trunk, 3-5 dominant canes
4	CFA	Appalachian Spring Dogwood	<i>Cornus florida</i> 'Appalachian Spring'	B&B	2" Cal.	Specimen
3	MVA	Sweetbay Magnolia	<i>Magnolia virginiana</i>	B&B	6'-8'Ht.	Matched Specimen, 3 Canes, Branched @ 3' Ht.
2	OLA	Overcup Oak	<i>Quercus lyrata</i>	B&B	2" Cal.	Specimen
3	ITOM	Bald Cypress	<i>Taxodium distichum</i>	B&B	2" Cal.	Matched Specimen
3	UPA	Allee Lacebark Elm	<i>Ulmus parvifolia</i> 'Emer II' Allee	B&B	2" Cal.	Specimen
19						
SHRUBS						
12	AGR	Rose Creek Abelia*	<i>Abelia grandiflora</i> 'Rose Creek'	Cont.	3 Gal.	Full Plants @ 48" O.C.
18	ICC	Carissa Holly*	<i>Ilex cornuta</i> 'Carissa'	Cont.	3 Gal.	Full Plants @ 48" O.C.
6	ICA	Compacta Holly*	<i>Ilex crenata</i> 'Compacta'	Cont.	3 Gal.	Full Plants @ 36" O.C.
22	IVH	Henry's Garnet Sweetspire	<i>Itea virginica</i> 'Henry's Garnet'	Cont.	3 Gal.	Full Plants @ 48" O.C.
11	JVG	Grey Owl Juniper*	<i>Juniperus virginiana</i> 'Grey Owl'	Cont.	15" Ht./18" Sprd.(Min.)	Full Plants @ 54" O.C.
10	PLS	Schip Laurel*	<i>Prunus laurocerasus</i> 'Schipkaensis'	Cont.	36" Ht. (Min.)	Full Plants @ 60" O.C.
15	RRS	Autumn Lilac Encore Dwarf Azalea*	<i>Rhododendron</i> 'Robles' PP22762	Cont.	3 Gal.	Full Plants @ 42" O.C.
12	RMI	Peach Drift Rose	<i>Rosa x 'Meigilli'</i>	Cont.	3 Gal.	Full Plants @ 36" O.C.
106						
GROUND COVERS & PERENNIALS						
71	LMB	Big Blue Liriope*	<i>Liriope muscari</i> 'Big Blue'	Cont.	4" Pots	Full Plants @ 18" O.C.
12	PAH	Hamel Pennisetum	<i>Pennisetum allopecuroides</i> 'Hamel'	Cont.	1 Gal.	Full Plants @ 30" O.C.
LAWNS						
30,300		Seeded Lawns - Fescue Blend		Seed	SF	See Notes and Specifications
17,200		Sodded Lawns - Fescue Blend		Sod	SF	See Notes and Specifications

PERMITTING NOTES:

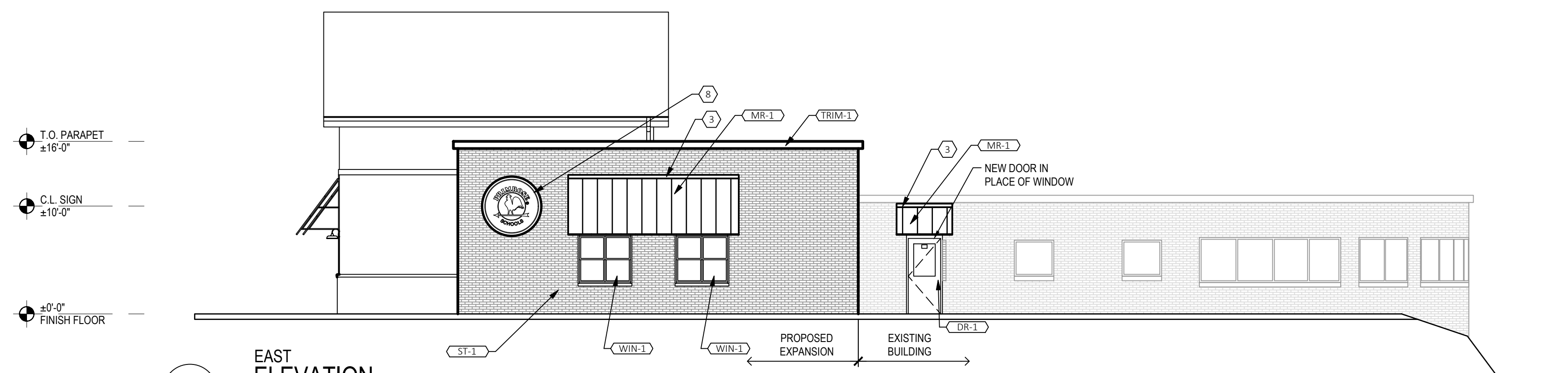
- THE 2.33 ACRE L-SHAPED PARCEL IS ZONED CITY OF KNOXVILLE I-G. ADJACENT PARCELS HAVE SIMILAR ZONING. THE EXISTING BUILDING SHALL BE EXPANDED > 30%. THE EXISTING PARKING LOT SHALL BE PRESERVED AND IMPROVED.
- RE. KNOXVILLE TREE PROTECTION ORDINANCE, CHAPTER 14-34 DESTRUCTION OR REMOVAL OF TREES: THE APPLICANT PROPOSES TO REMOVE EXISTING TREES AS REQUIRED FOR GRADING.
- RE. KNOXVILLE TREE PROTECTION ORDINANCE, CHAPTER 14-35 PROTECTION OF TREES OF HISTORICAL OR BOTANICAL IMPORTANCE; NO EXISTING TREES ON SITE ARE OF HISTORICAL OR BOTANICAL IMPORTANCE.
- RE. KNOXVILLE TREE PROTECTION ORDINANCE, CHAPTER 14-36 PLANTING OF TREES:
 - SITE= 2.33 ACRES X 8 TREES/ACRE = 19 (MIN.) TREES REQUIRED. (19) TREES ARE PROPOSED.
 - AT LEAST HALF OF REQUIRED TREES SHALL REACH 50' HT. AT MATURITY. 19/2=10. AT LEAST 10 OF THE PROPOSED TREES ARE SPECIES WHICH TYPICALLY EXCEED 50' HT. AT MATURITY
 - ALL PROPOSED SHADE TREES SHALL BE EQUAL TO OR GREATER THAN THE 2" CALIPER MINIMUM SIZE REQUIRED AT INSTALLATION.
- RE. KNOXVILLE TREE PROTECTION ORDINANCE, CHAPTER 14-37 MAINTENANCE AND REPLACEMENT OF TREES; SEE LANDSCAPE NOTES.
- KNOXVILLE ZONING REGULATIONS, APPENDIX B, ARTICLE 12-LANDSCAPING, 12.4. B. SPECIES DIVERSITY:
 - (19) DECIDUOUS TREES- MAX. QTY. OF SINGLE SPECIES= 40%- 21% PROPOSED. MIN. NO. OF SPECIES FOR TYPE= 5, 7 SPECIES PROPOSED.
 - (106) SHRUBS- MAX. QTY. OF SINGLE SPECIES= 25%- 21% PROPOSED. MIN. NO. OF SPECIES FOR TYPE= 8, 8 SPECIES PROPOSED.
- 12.5- PARKING LOT PERIMETER LANDSCAPE YARD- NOT APPLICABLE:
 - THE EXISTING PARKING LOT WILL NOT BE EXPANDED.
- 12.6- INTERIOR PARKING LOT LANDSCAPE- NOT APPLICABLE:
 - THE NEW PARKING LOT FOR THE PROPOSED CHILD CARE FACILITY IS < 20,000 SF.
 - THE EXPANDED PARKING LOT FOR THE EXISTING BUILDING IS < 20,000 SF.
- 12.7- SITE LANDSCAPE: THE EAST FACADE IS > 10' (WITH NO PARKING) FROM THE ERIN DRIVE R.O.W.:
 - 12.7 B: PLANTING IS REQUIRED ALONG 60% OF THE LINEAR FACADE. 87 LF X 60% = 52 LF MIN. IS REQUIRED. PLANTING IS PROPOSED FOR 87 LF (100%) OF THE FACADE.
 - 12.7. B. 1.: SHRUBS @ EAST FACADE; LENGTH= 87'. 87/3 = 29 (MIN.) SHRUBS REQUIRED. 30 SHRUBS ARE PROPOSED.
 - 12.7. B. 2.: TREES @ EAST FACADE; LENGTH= 87'. 87/50 = 1.7 (MIN.) SHADE TREES (OR 4 ORNAMENTAL TREES) ARE REQUIRED. (4) ORNAMENTAL TREES ARE PROPOSED.
- 12.7- SITE LANDSCAPE: THE EAST FACADE IS > 10' FROM THE ERIN DRIVE R.O.W.:
 - 12.7 B: PLANTING IS REQUIRED ALONG 60% OF THE LINEAR FACADE. 106 LF X 60% = 64 LF MIN. IS REQUIRED. PLANTING IS PROPOSED FOR 98 LF (92%) OF THE FACADE.
 - 12.7. B. 1.: SHRUBS @ EAST FACADE; LENGTH= 95'. 95/3 = 32 (MIN.) SHRUBS REQUIRED. (40) SHRUBS ARE PROPOSED.
 - 12.7. B. 2.: TREES @ EAST FACADE; LENGTH= 95'. 95/50 = 2 (MIN.) SHADE TREES (OR 4 ORNAMENTAL TREES) ARE REQUIRED. (3) SHADE TREES ARE PROPOSED.
- 12.7- SITE LANDSCAPE: THE SOUTH FACADE ABUTS A PARKING AREA:
 - 12.7 B: PLANTING IS REQUIRED ALONG 60% OF THE LINEAR FACADE. 145 LF X 60% = 87 LF MIN. IS REQUIRED. PLANTING IS PROPOSED FOR 93 LF (64%) OF THE FACADE.
 - 12.7. B. 1.: SHRUBS @ SOUTH FACADE; LENGTH= 145'. 145/3 = 48 (MIN.) SHRUBS REQUIRED. (55) SHRUBS ARE PROPOSED.
 - 12.7. B. 2.: TREES @ SOUTH FACADE; LENGTH= 145'. 145/50 = 3 (MIN.) SHADE TREES (OR 6 ORNAMENTAL TREES) ARE REQUIRED. (2) SHADE TREES AND (2) ORNAMENTAL TREES ARE PROPOSED.
- 12.8 BUFFER YARDS- NOT APPLICABLE:
 - ADJACENT PARCELS ARE NOT ZONED RESIDENTIAL.
- USE ON REVIEW LANDSCAPE PLAN IS NOT FOR CONSTRUCTION.

THE PENLAND STUDIO
 LANDSCAPE ARCHITECTURE
 2110 HOLDERWOOD LANE
 KNOXVILLE, TENNESSEE 37922
 BPHTEL@PENLANDSTUDIO.COM
 865.335.3584
 WWW.PENLANDSTUDIO.COM

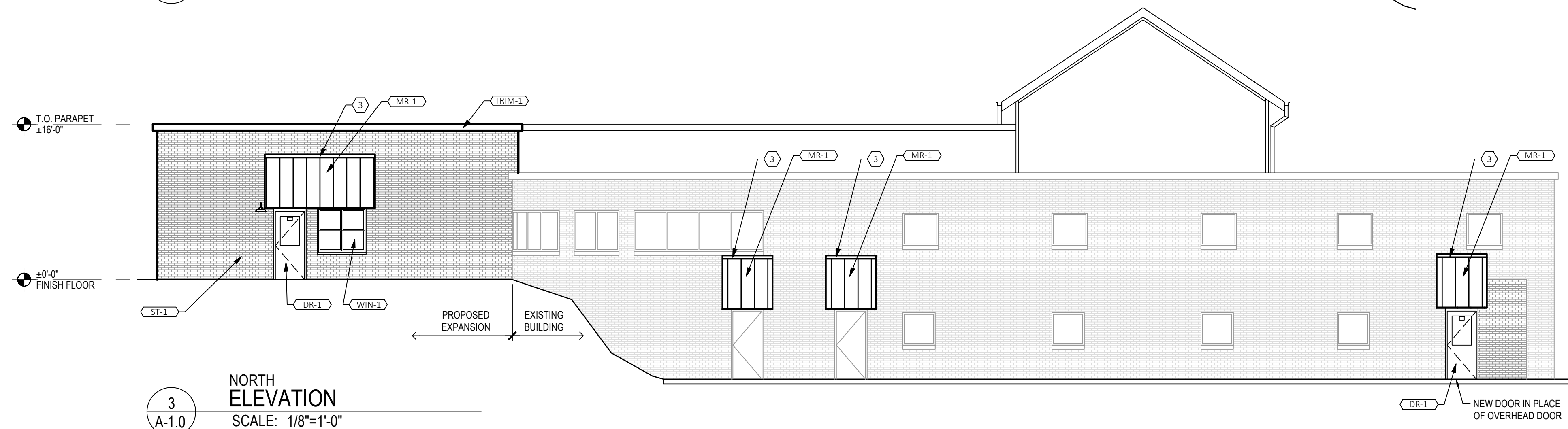
REVISIONS	DATE
CANNON & CANNON INC	
TEL: 865.670.8555	10025 Investment Drive
WWW.CANNON-CANNON.COM	Suite 120
	Knoxville, TN 37932
CLIENT: PRIMROSE SCHOOL FRANCHISING COMPANY 3200 WINDY HILL ROAD, SUITE 1200 E ATLANTA, GA 30339	
PROJECT: PRIMROSE SCHOOL KNOXVILLE 315 ERIN DRIVE KNOXVILLE, TN 37919	
LANDSCAPE PLAN	
PRELIMINARY FOR REVIEW ONLY	CCI PROJECT NO. 01797-0002
	DRAWING DATE JULY 26, 2024
	PROJECT MANAGER: A. KOHNTOPP
	DRAWN BY: TPS
L101	



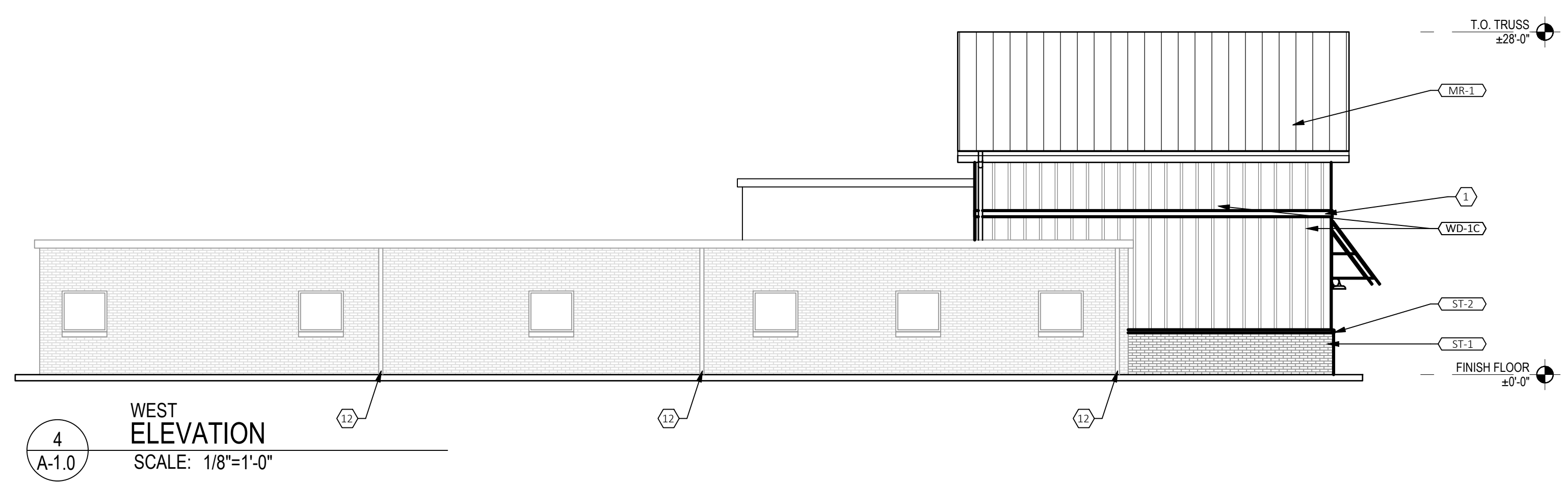
1 SOUTH ELEVATION SCALE: 1/8"=1'-0"



2 EAST ELEVATION SCALE: 1/8"=1'-0"



3 NORTH ELEVATION SCALE: 1/8"=1'-0"



4 WEST ELEVATION SCALE: 1/8"=1'-0"

ELEVATION KEYED NOTES

- 1 5/4 x 8 TRIMBOARD, WD - 2
- 2 NOT USED
- 3 5/4 x 4 TRIMBOARD, WD - 2
- 4 42" ROUND LED LIGHTED SIGN (INTERNALLY LIT).
- 5 LIGHTING
- 6 TRIM BOARD AT OFFICE & CONF ROOM WINDOWS: HORIZ TO BE 5/4 x 6, VERT TO BE 5/4 x 4, BOTH WD-3
- 7 NOT USED
- 8 60" ROUND LED LIGHTED SIGN (INTERNALLY LIT).
- 9 NOT USED
- 10 NOT USED
- 11 GLAZING TO RECIEVE WINDOW FILM, TINT - 1.
- 12 EXISTING DOWNSPOUTS
- 13 KNOX BOX OR APPROVED EQUAL. COORDINATE LOCATION WITH LOCAL FIRE OFFICIAL
- 14 NOT USED
- 15 BEIGE ALUMINUM PLAQUE W/6" REFLECTIVE BLACK VINYL NUMBERS. PROVIDED BY 1 HOUR SIGN. COORDINATE LOCATION WITH LOCAL FIRE OFFICIAL.
- 16 4" REFLECTIVE NUMBERS

EXTERIOR FINISH LEGEND

MARK	DESCRIPTION	SPECIFICATION
MR-1	METAL ROOF	BERRIDGE CEE-LOCK SYSTEM. COLOR: DARK BRONZE.
ST-1	BRICK	BRICK TO MATCH EXISTING
ST-2	STONE CAP @ WAINSCOT	CORONADO. CHISELED STONE SILL. COLOR: LIGHT GREY.
TRIM	MISC METAL TRIM & FLASHING	ANY MISC METAL FLASHING AND TRIM NOT NOTED AS TRIM-1 OR TRIM-2 SHOULD MATCH COLOR OF ADJACENT SURFACE.
TRIM-1	MTL TRIM @ PARAPET CAP	BM COLOR REVIEW ROC - 21 WINTER WHITE. (COLOR TO MATCH "ARCTIC WHITE")
TRIM-2	MTL TRIM @ METAL ROOF	COLOR: TO MATCH "MR-1"
WD-1C	BOARD & BATTEN SIDING (@ENTER TOWER)	HARDIE PANEL (4' X 10') & HARDIE TRIM BATTEN BOARDS (2 1/2" WIDE @ 16" O.C.) FINISH: SMOOTH COLOR:ARCTIC WHITE
WD-2	TRIM (FASCIA, FRIEZE, RUNNING TRIM)	HARDIE TRIM BOARDS, 5/4 NT3 SMOOTH, VARIOUS WIDTHS AS REQUIRED (SEE ELEVATIONS). COLOR: ARCTIC WHITE (PRIMED AND FIELD PAINTED)
WD-4	TRIM (FASCIA TRIM @ METAL ROOF)	HARDIE TRIM BOARDS, 5/4 NT3 SMOOTH, SEE WALL SECTIONS FOR SIZE. COLOR: PAINT TO MATCH MR-1
ACC-1	SHUTTERS	EKENA MILLWORK: TWO BATTEN W/Z-BAR BOARD & BATTEN COMPOSITE SHUTTERS. 3' - 6" T x 1' - 6" W. SHUTTERS TO BE ORDERED PRIMED, PAINT TO MATCH "AGED PEWTER"
ACC-2	LOUVERS	EKENA MILLWORK: 65"W X 21 3/4"H X 1 1/4" P, PITCH 8:12 TRIANGLE GABLE VENT, NON-FUNCTIONAL. ITEM NO. GVTR65X21D (COLOR TO MATCH "ARCTIC WHITE")
DS-1	SCUPPERS, DOWNSPOUTS	BM COLOR REVIEW ROC - 21 WINTER WHITE. (COLOR TO MATCH "ARCTIC WHITE"): 6" GUTTERS AND 6" DOWNSPOUTS U.N.O.
DS-2	GUTTERS ALONG METAL ROOF	COLOR: TO MATCH "MR - 1"
DR-1	HALF LITE DOORS	EXTERIOR INSULATED METAL HALF LITE DOOR; COLOR (INTERIOR & EXTERIOR): WHITE. SEE DOOR SCHEDULE FOR ADDITIONAL INFORMATION.
DR-2	FULL LITE DOOR	EXTERIOR INSULATED METAL FULL LITE DOOR; COLOR (INTERIOR & EXTERIOR): WHITE. SEE DOOR SCHEDULE FOR ADDITIONAL INFORMATION.
WIN-1	VINYL WINDOWS	BUILDER SERIES 1100 SINGLE HUNG. COLOR: WHITE. SEE WINDOW SCHEDULE.
WIN-2	VINYL WINDOWS (@ OFFICE)	BUILDER SERIES 1100 RECTANGLE. COLOR: WHITE. SEE WINDOW SCHEDULE.

9-E-24-SU
7/29/2024

PRELIMINARY
NOT FOR CONSTRUCTION



ADA ARCHITECTS
17710 Detroit Avenue, Lakewood, Ohio 44107
Phone (216) 521-9134 Fax (216) 521-1624
www.adaarchitects.com

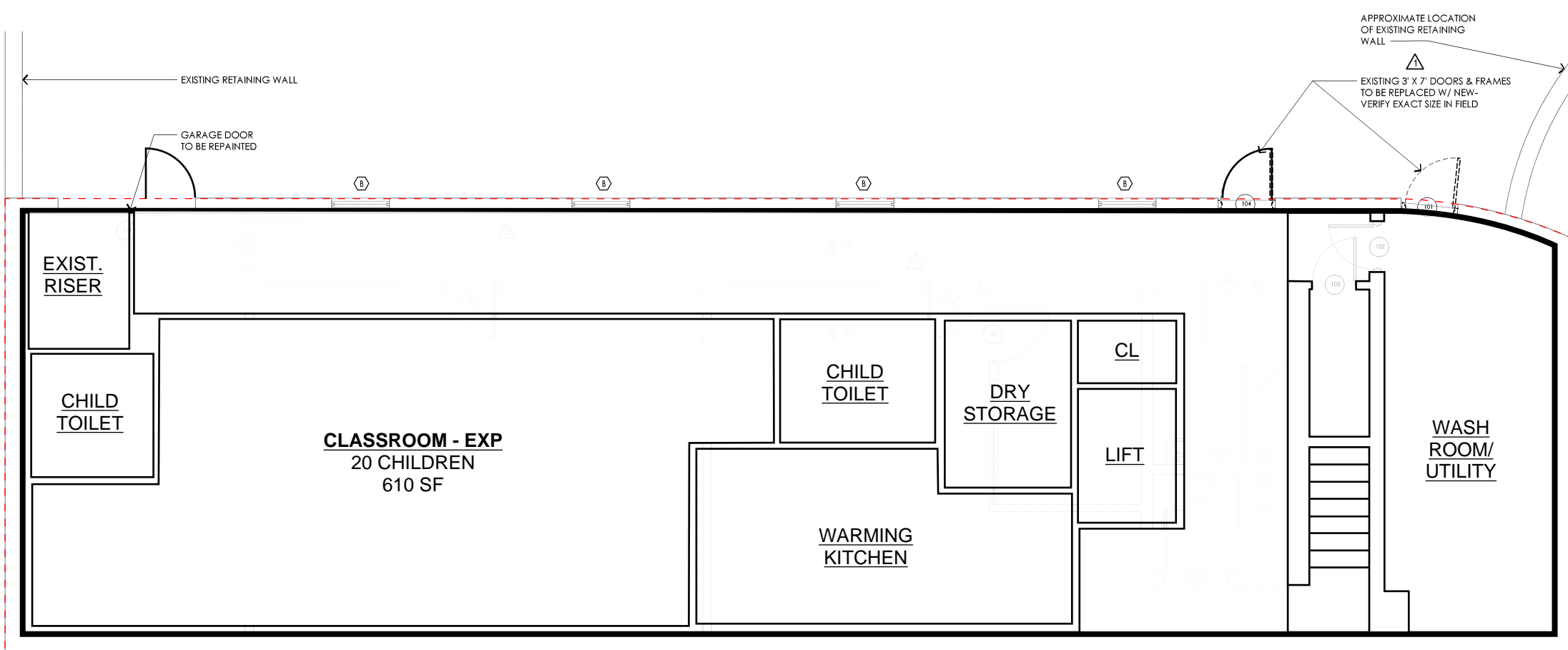
PRIMROSE SCHOOLS:
KNOXVILLE, TN
315 ERIN DRIVE
KNOXVILLE, TN 37919

THESE DOCUMENTS CONTAIN INFORMATION PROPRIETARY TO ADA ARCHITECTS, INC.
UNAUTHORIZED USE OF THESE DOCUMENTS IS EXPRESSLY PROHIBITED UNLESS AGREED UPON IN WRITING.

REVISIONS

#	DATE	TYPE
1		
2		
3		
4		
5		
6		
7		
8		
9		

EXTERIOR ELEVATIONS
DATE 07/29/2024
JOB NO. 23560
A-1.0
SHEET NO.

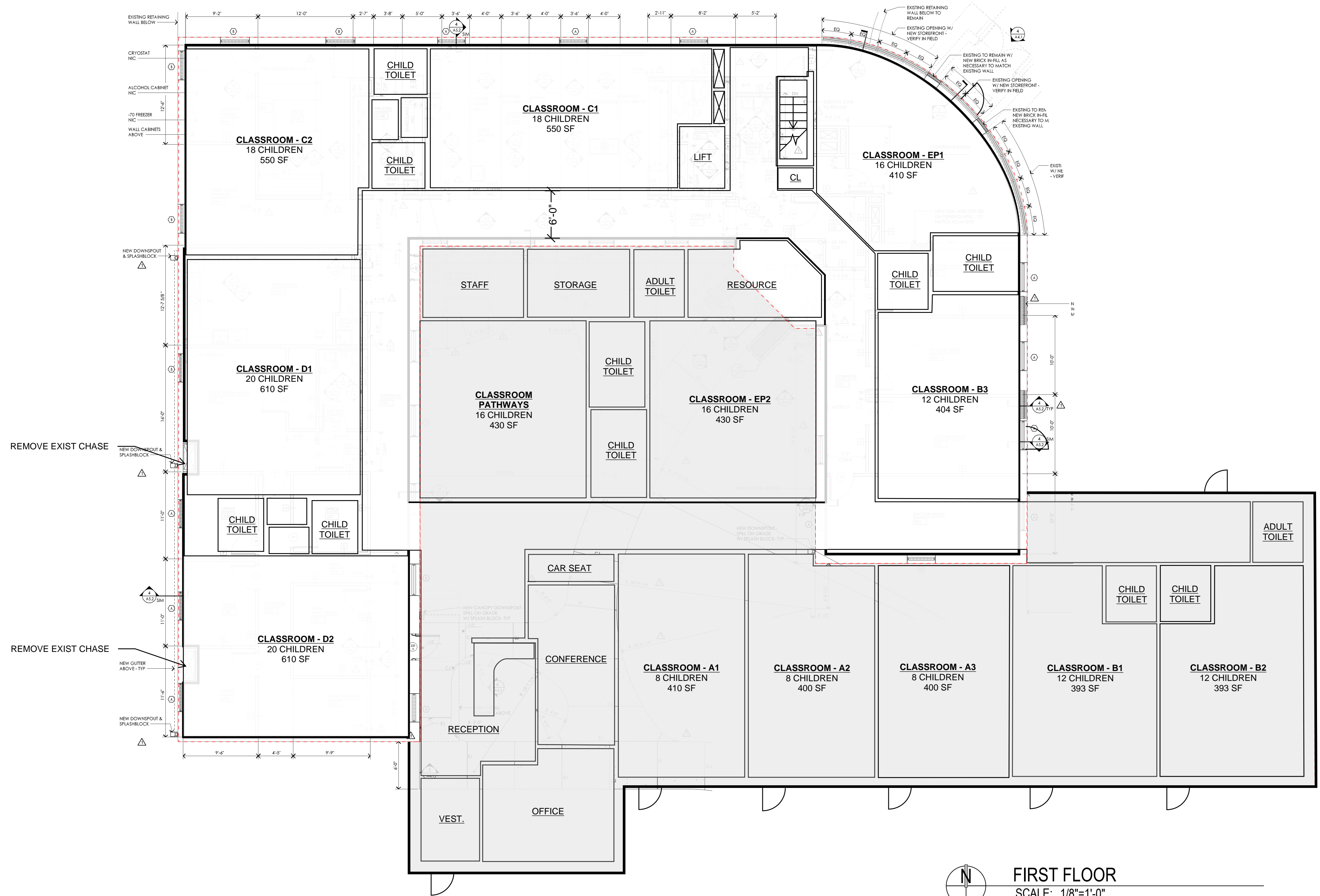


CLASSROOM	AGES			RATIO			MAX GROUP SIZE			SQUARE FOOTAGE / FTE			TOTAL SQUARE FOOTAGE		PROPOSED CAPACITY	
	PSFC	TN	PROPOSED	PSFC	TN	PROPOSED	PSFC	TN	PROPOSED	PSFC	TN	PROPOSED	REQUIRED	PROPOSED	CHILD	STAFF
A1 - INFANTS	0 - 12 MONTHS	6WKS-15MOS	0 - 12 MONTHS	1:4	1:4	1:4	8	8	8	50	30	50	400	410	8	2
A2 - INFANTS	0 - 12 MONTHS	6WKS-15MOS	0 - 12 MONTHS	1:4	1:4	1:4	8	8	8	50	30	50	400	400	8	2
A3 - INFANTS	0 - 12 MONTHS	6WKS-15MOS	0 - 12 MONTHS	1:4	1:4	1:4	8	8	8	50	30	50	400	400	8	2
B1 - TODDLERS	12 - 24 MONTHS	12 - 30 MONTHS	12 - 24 MONTHS	1:6	1:6	1:6	12	12	12	35	30	35	360	393	12	2
B2 - TODDLERS	12 - 24 MONTHS	12 - 30 MONTHS	12 - 24 MONTHS	1:6	1:6	1:6	12	12	12	35	30	35	360	393	12	2
B3 - TODDLERS	12 - 24 MONTHS	12 - 30 MONTHS	12 - 24 MONTHS	1:6	1:6	1:6	12	12	12	35	30	35	360	404	12	2
EP1 - EARLY PRESCHOOL	24 - 29 MONTHS	12 - 30 MONTHS	24 - 29 MONTHS	1:8	1:6	1:6	16	12	12	35	30	35	360	410	12	2
EP2 - EARLY PRESCHOOL	30 - 35 MONTHS	24 - 35 MONTHS	30 - 35 MONTHS	1:8	1:7	1:7	16	14	14	35	30	35	420	430	14	2
PW - PATHWAYS	30 - 42 MONTHS	24 - 35 MONTHS	30 - 42 MONTHS	1:8	1:7	1:7	16	14	14	35	30	35	420	430	14	2
C1 - PRESCHOOL	3 YEARS	3YO	3YO	1:12	1:9	1:9	24	18	18	35	30	35	540	550	18	2
C2 - PRESCHOOL	3 YEARS	3YO	3YO	1:12	1:9	1:9	24	18	18	35	30	35	540	550	18	2
D1 - PRE KINDERGARTEN	4 YEARS	4YO	4YO	1:12	1:13	1:12	24	20	20	35	30	35	600	610	20	2
D2 - PRE KINDERGARTEN	4 YEARS	4YO	4YO	1:12	1:13	1:12	24	20	20	35	30	35	600	610	20	2
EXP - EXPLORERS	5 YEARS +	5 YEARS +	5 YEARS +	1:15	1:20	1:15	30	N/A	30	35	30	35	600	610	20	2
TOTALS:													6360	6600	196	24

BUILDING AREA: FIRST FLOOR EXISTING: ±5,746 SF
 FIRST FLOOR EXPANSION: ±6,000 SF
 LOWER FLOOR EXISTING: ±2,412 SF
 TOTAL: ±14,158 SF

PLAYGROUND: PROVIDES AT LEAST FIFTY (50) SQUARE FEET OF USABLE SPACE PER CHILD USING THE AREA AT ONE TIME.
 PLAYGROUND PROVIDED: ±8,740 SF

LOWER FLOOR
 SCALE: 1/8"=1'-0"



FIRST FLOOR
 SCALE: 1/8"=1'-0"

9-E-24-SU
 7/29/2024

PRELIMINARY
 NOT FOR CONSTRUCTION



ADA ARCHITECTS
 17710 Detroit Avenue, Lakewood, Ohio 44107
 Phone (216) 521-9134 Fax (216) 521-1624
 www.adaarchitects.com

PRIMROSE SCHOOLS:
 KNOXVILLE, TN
 315 ERIN DRIVE
 KNOXVILLE, TN 37919

THESE DOCUMENTS CONTAIN INFORMATION PROPRIETARY TO ADA ARCHITECTS, INC.
 UNAUTHORIZED USE OF THESE DOCUMENTS IS EXPRESSLY PROHIBITED UNLESS AGREED UPON IN WRITING.

REVISIONS

#	DATE	TYPE
1		
2		
3		
4		
5		
6		
7		
8		
9		

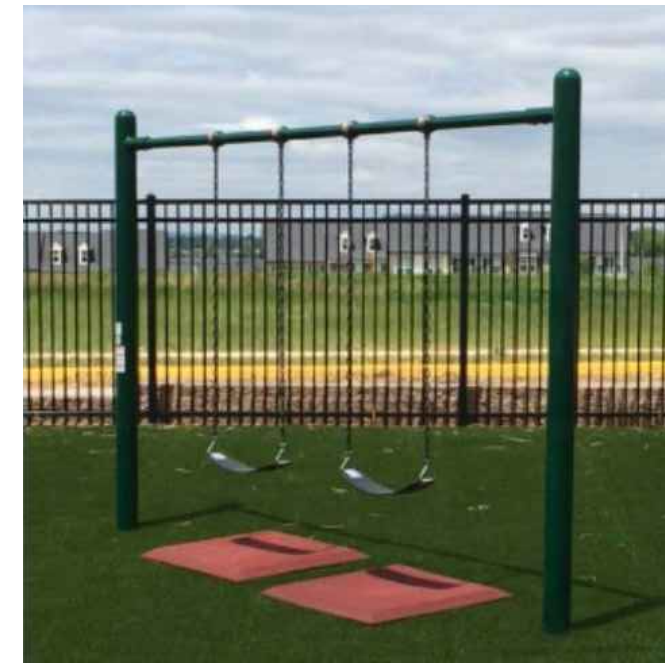
FIT PLAN

DATE: 07/29/2024
 JOB NO.: 23560

A-2.0
 SHEET NO.

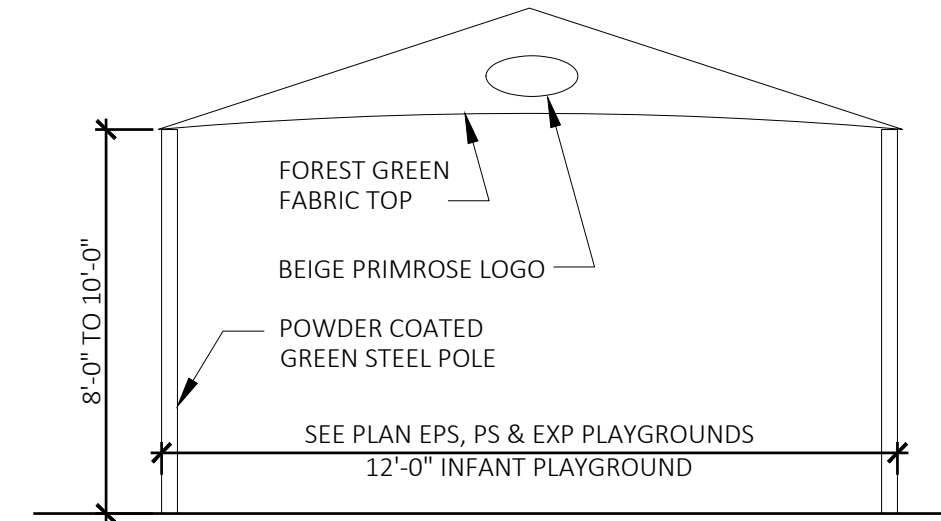


PRESCHOOL / AFTER SCHOOL - FIRE TRUCK UNIT WITH SHADE TOPPER



PRESCHOOL / AFTER SCHOOL - BELT SWINGS

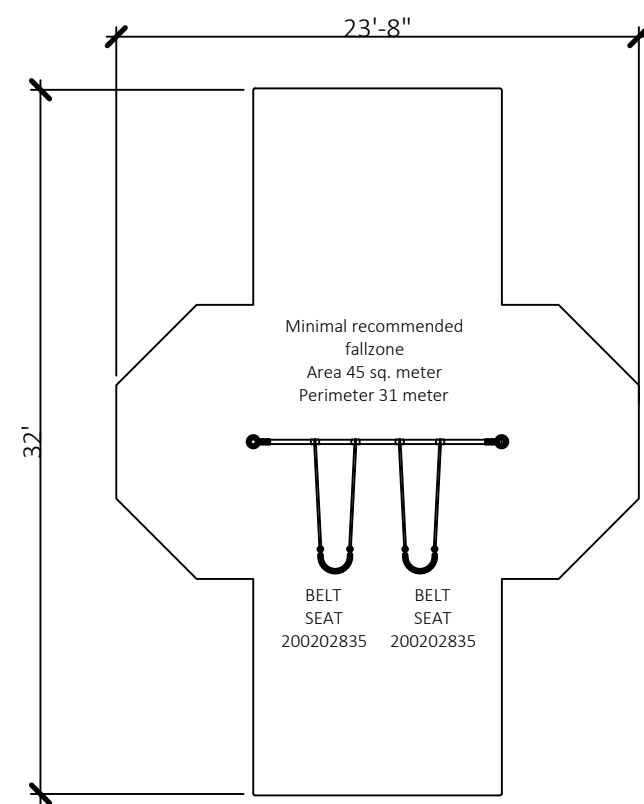
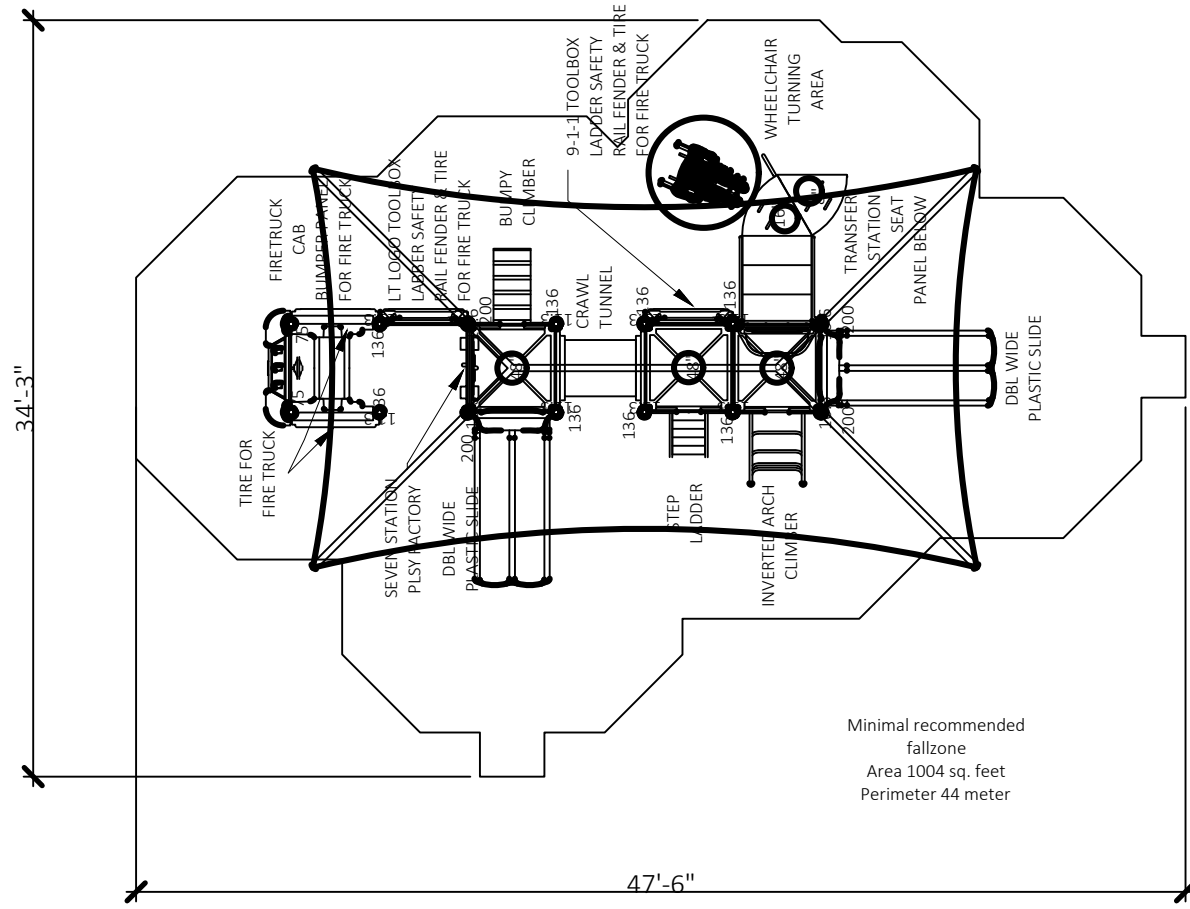
9-E-24-SU
7/29/2024



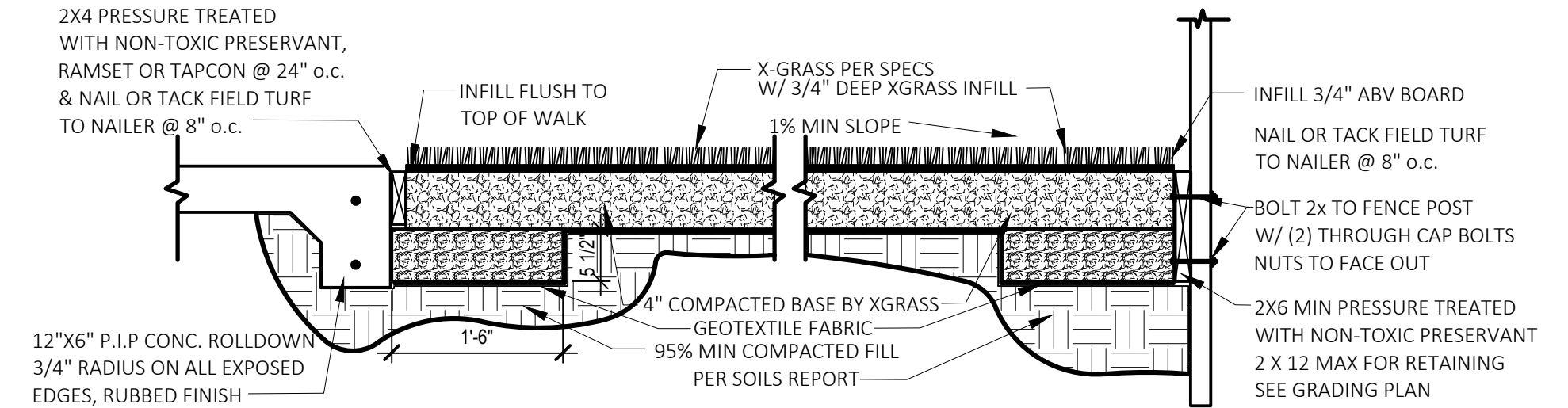
3 SHADE SHELTER
A3.0 SCALE: 1/4" = 1'-0"



INFANT - 3 PANEL UNIT WITH 12'X12'X8' INDEPENDENT SHADE



PRIMROSE PATCH



NOTES:
FALL SURFACING SHALL COMPLY WITH ASTM F1951 FOR WHEELCHAIR ACCESSIBILITY & ASTM F1292 FOR FALL ATTENUATION.

4 ARTIFICIAL TURF
A3.0 SCALE: 3/4" = 1'-0"

1 AFTER SCHOOL/PRESCHOOL PLAYGROUND EQUIPMENT
A3.0 SCALE: NTS



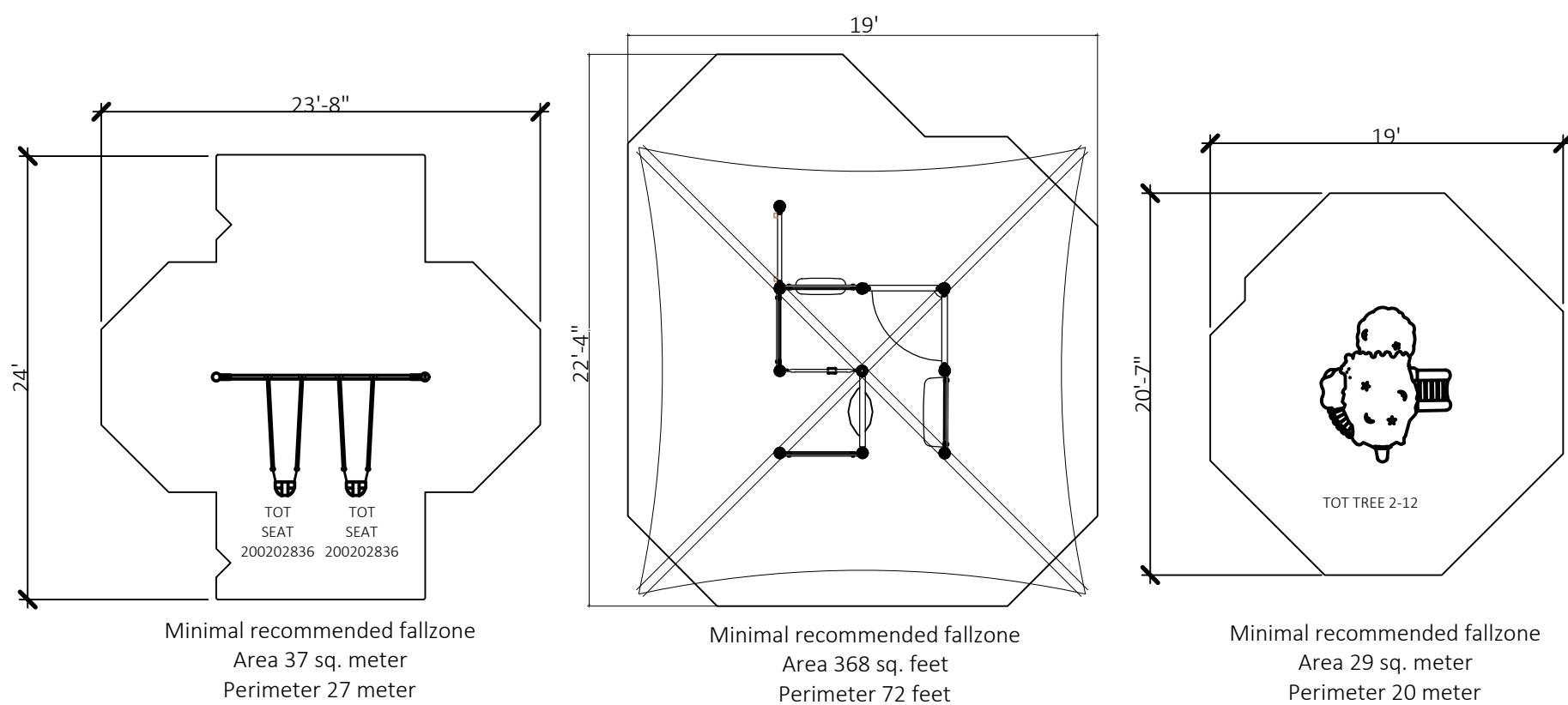
EARLY PRESCHOOL - MAXPLAY TOT SWINGS



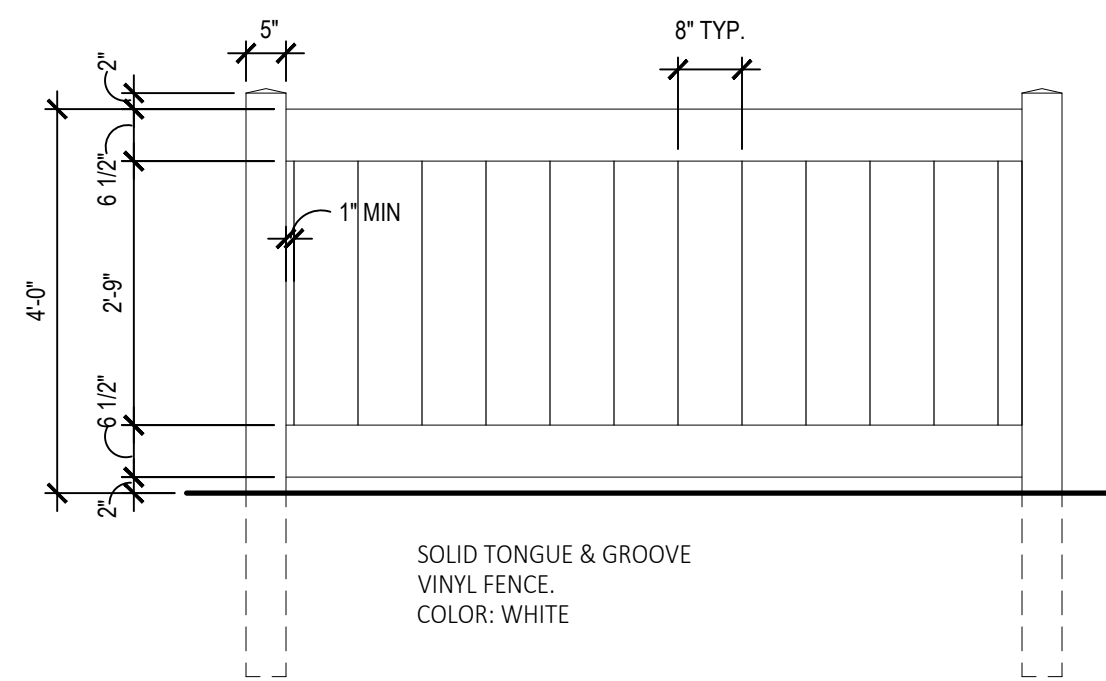
EARLY PRESCHOOL - PB GROUND UNIT WITH SHADE TOPPER



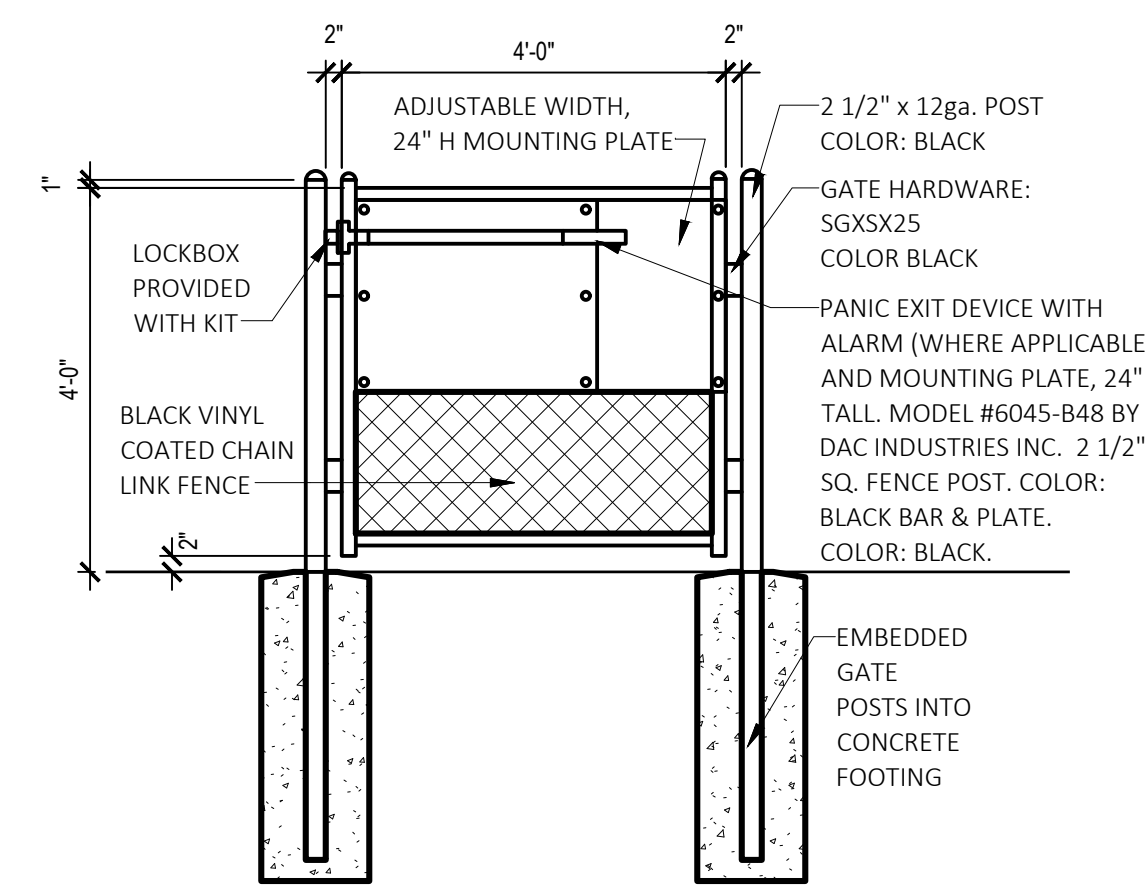
EARLY PRESCHOOL - TOT TREE



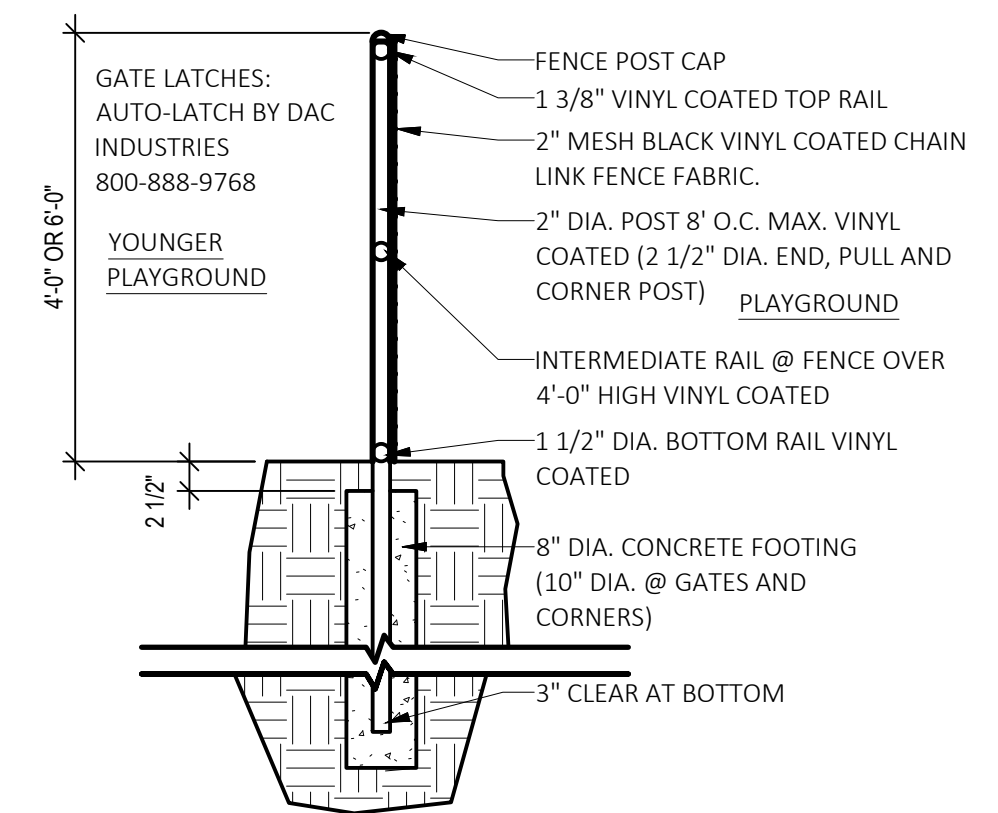
2 EARLY PRESCHOOL PLAYGROUND EQUIPMENT
A3.0 SCALE: NTS



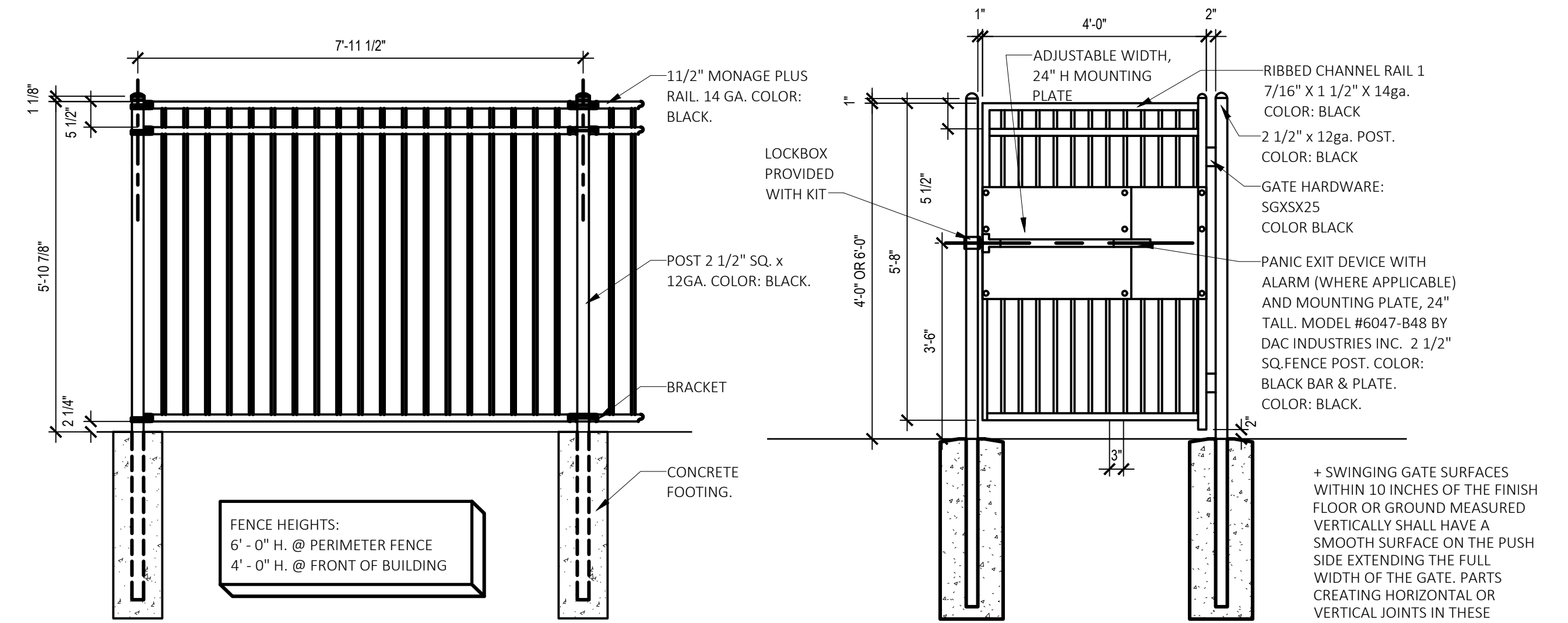
7 VINYL FENCE ELEVATION
A3.0 SCALE: 1/2" = 1'-0"



5 GATE ELEVATION
A3.0 SCALE: 1/2" = 1'-0"



6 CHAIN LINK FENCE
A3.0 SCALE: 3/4" = 1'-0"



8 FENCE ELEVATION
A3.0 SCALE: 1/2" = 1'-0"

9 GATE ELEVATION
A3.0 SCALE: 1/2" = 1'-0"

+ SWINGING GATE SURFACES WITHIN 10 INCHES OF THE FINISH FLOOR OR GROUND MEASURED VERTICALLY SHALL HAVE A SMOOTH SURFACE ON THE PUSH SIDE EXTENDING THE FULL WIDTH OF THE GATE. PARTS CREATING HORIZONTAL OR VERTICAL JOINTS IN THESE SURFACES SHALL BE WITHIN 1/16 INCH OF THE SAME PLANE AS THE OTHER. CAVITIES CREATED BY ADDED KICK PLATES SHALL BE CAPPED.

PRELIMINARY
NOT FOR CONSTRUCTION



ADA ARCHITECTS

1770 Detroit Avenue
Lakewood, Ohio 44107
Phone (216) 521-9134
Fax (216) 521-1624
www.adaarchitects.com

PRIMROSE SCHOOLS:
KNOXVILLE, TN

315 ERIN DRIVE
KNOXVILLE, TN 37919

THESE DOCUMENTS CONTAIN INFORMATION PROPRIETARY TO ADA ARCHITECTS, INC.
UNAUTHORIZED USE OF THESE DOCUMENTS IS EXPRESSLY PROHIBITED UNLESS AGREED UPON IN WRITING.

REVISIONS

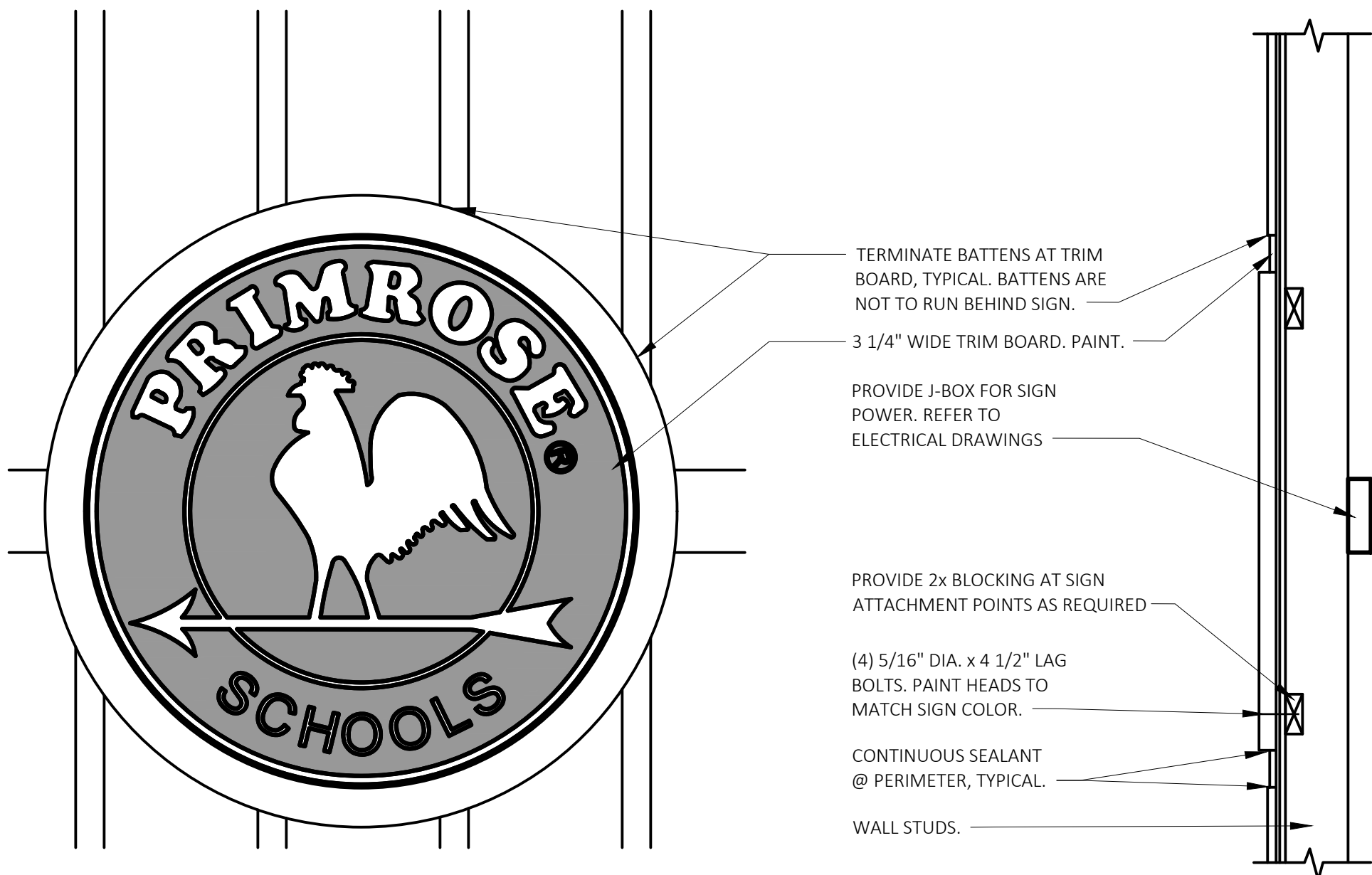
#	DATE	TYPE
1		
2		
3		
4		
5		
6		
7		
8		
9		

PLAYGROUND
DETAILS

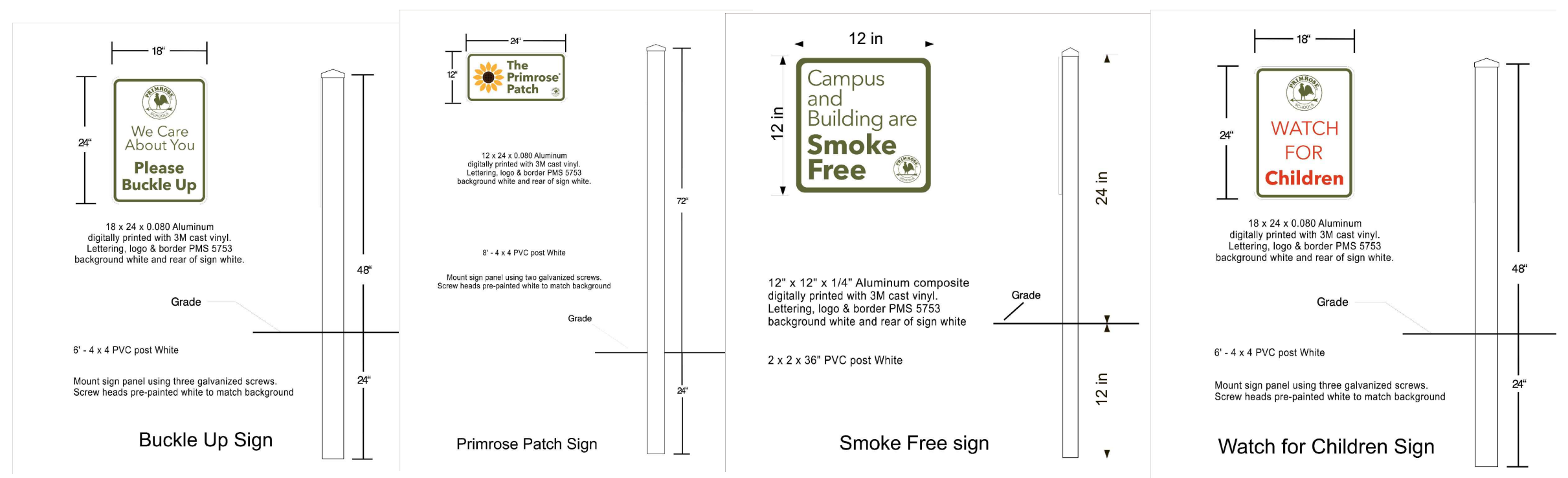
DATE 07/29/2024

JOB NO. 23560

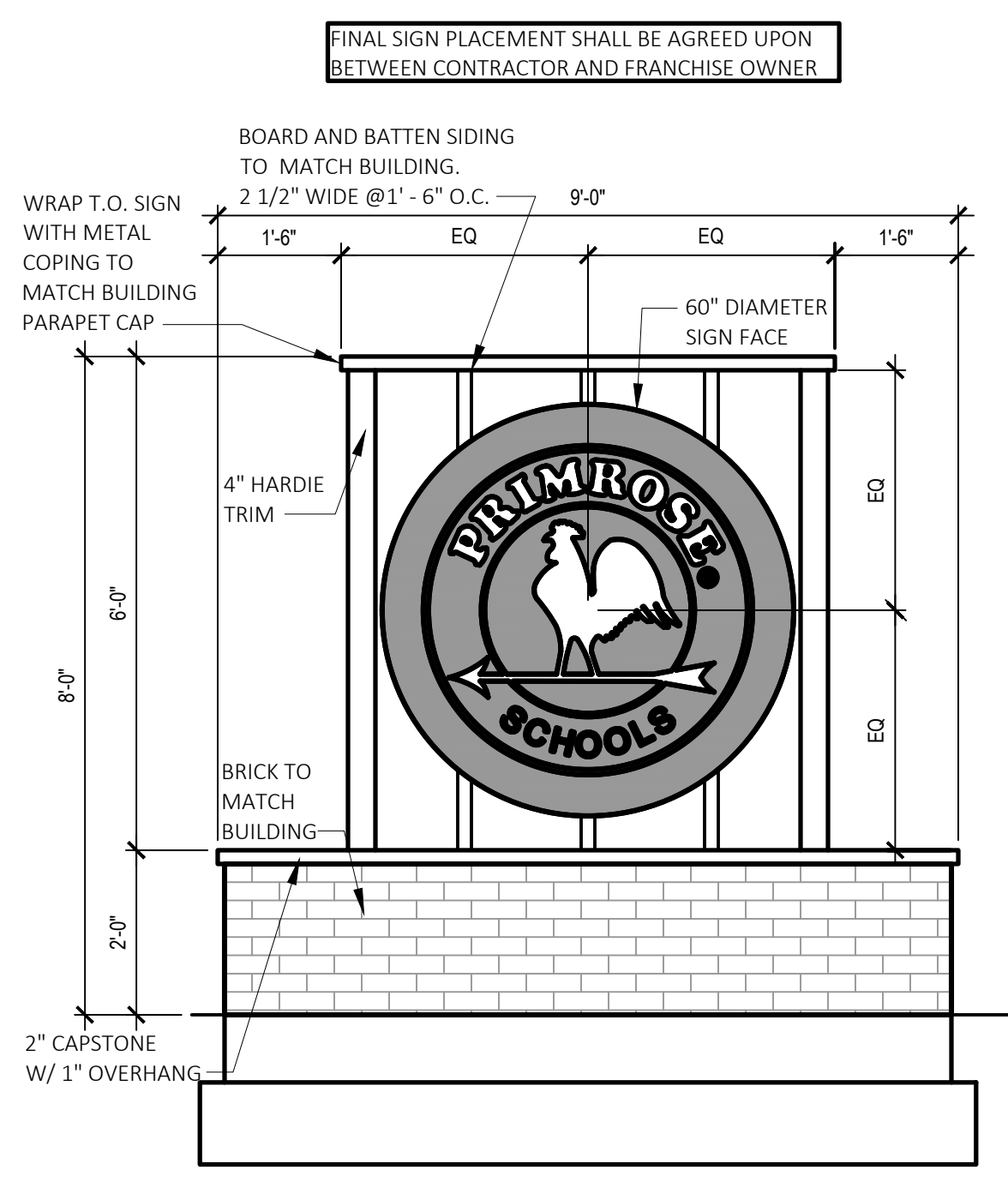
A-3.0
SHEET NO.



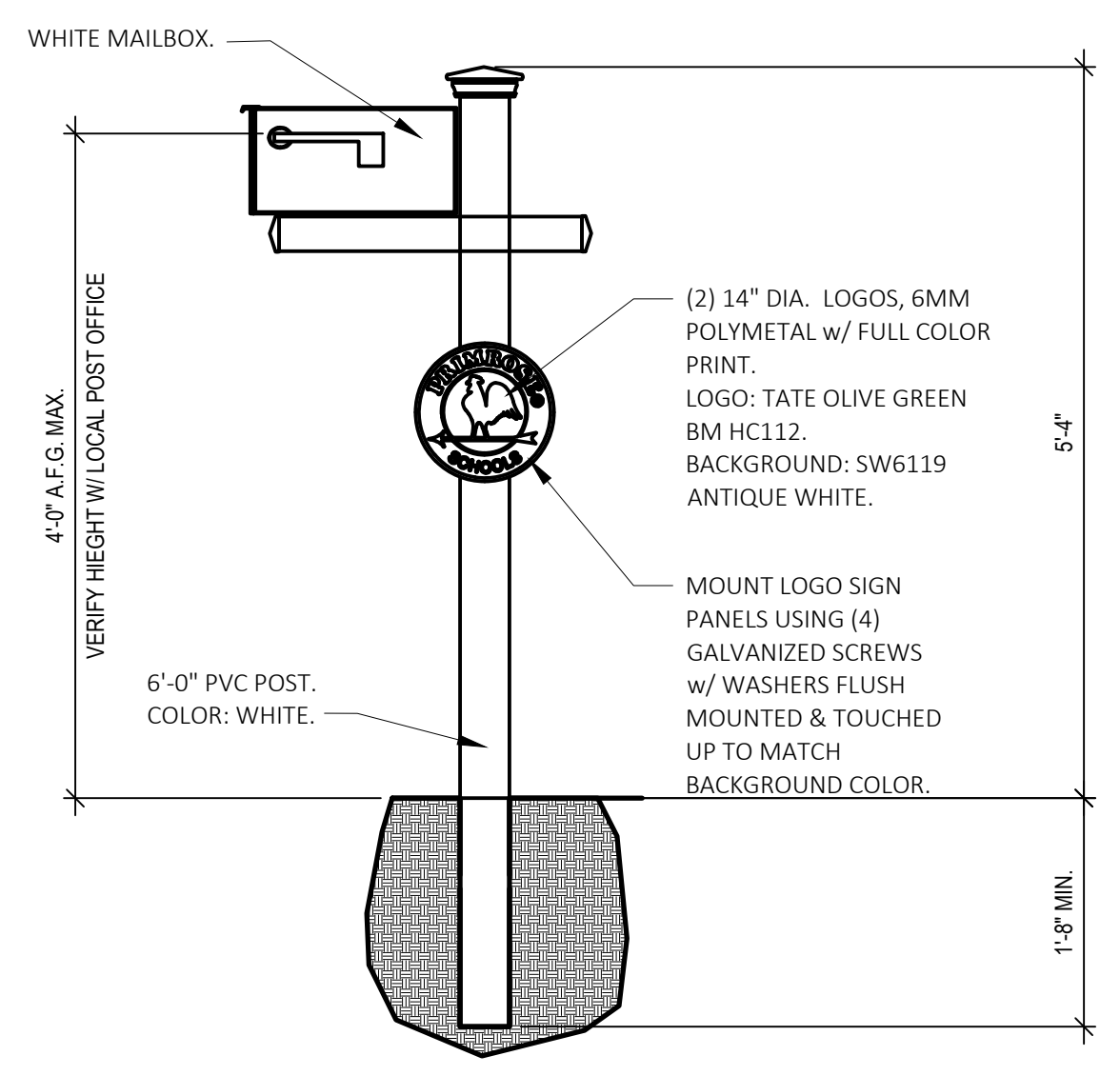
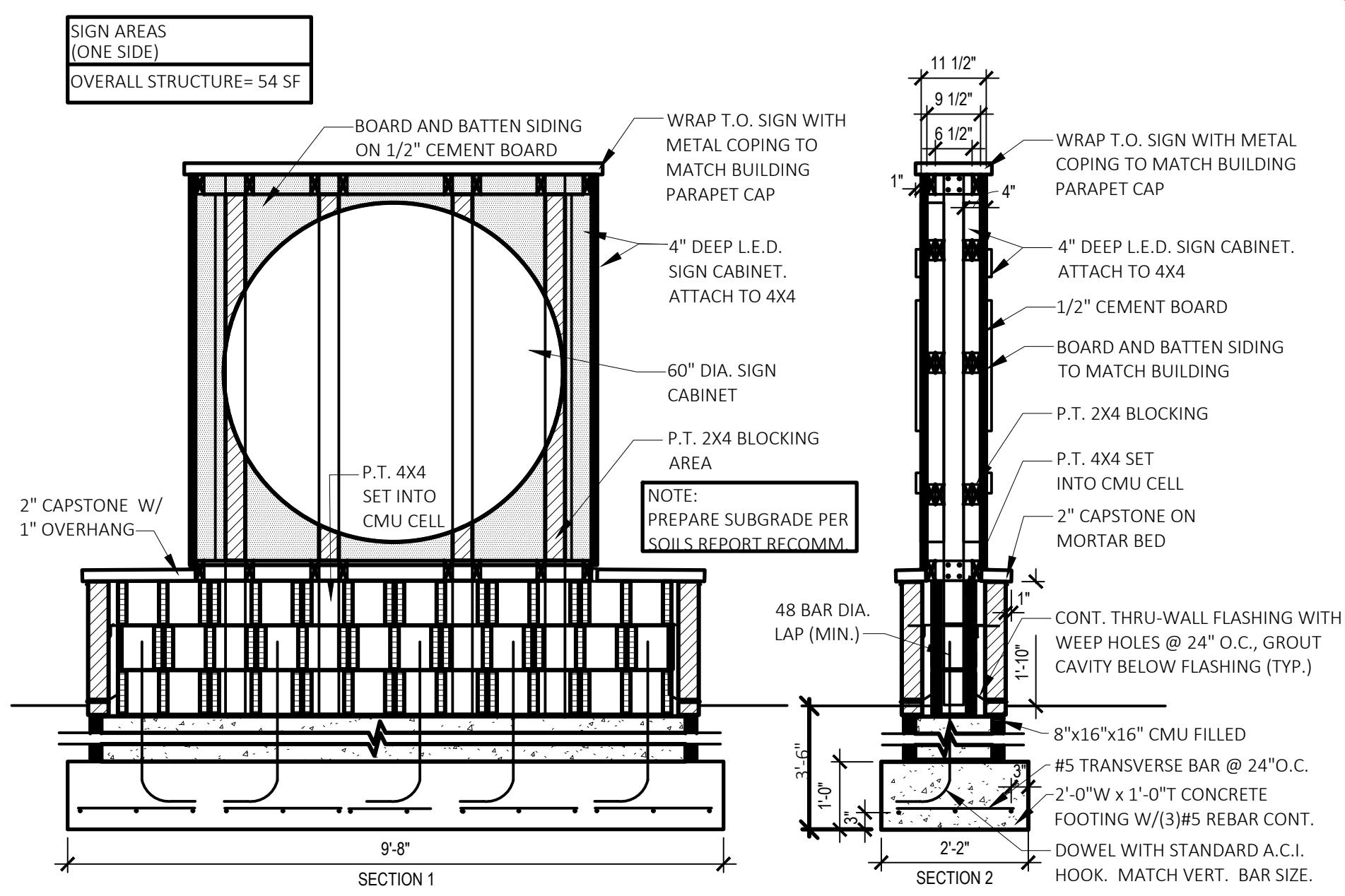
1 SIGN MOUNTING
A4.0 SCALE: 1" = 1'-0"



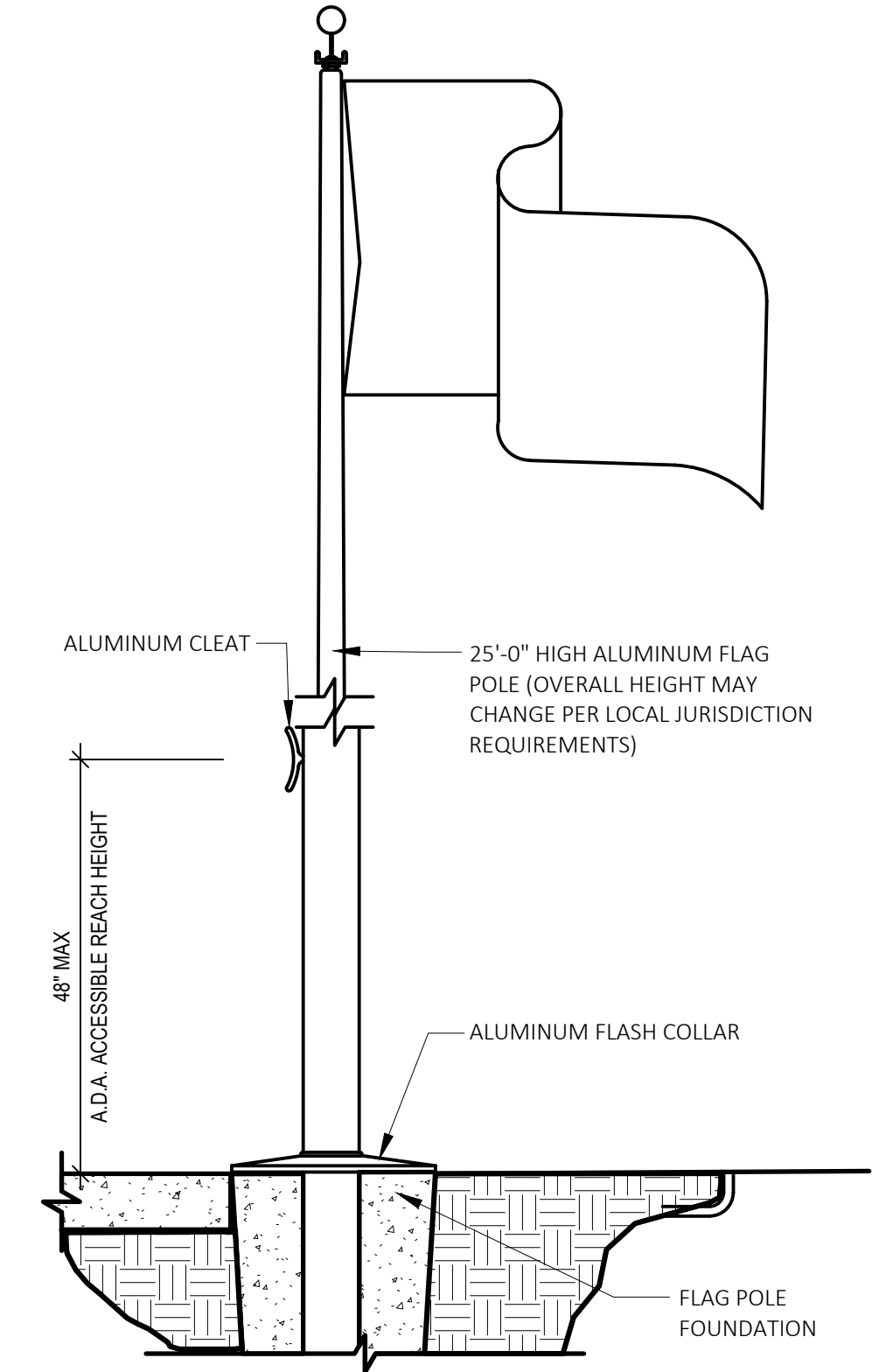
2 SITE SIGNAGE PACKAGE
A4.0 SCALE: NTS



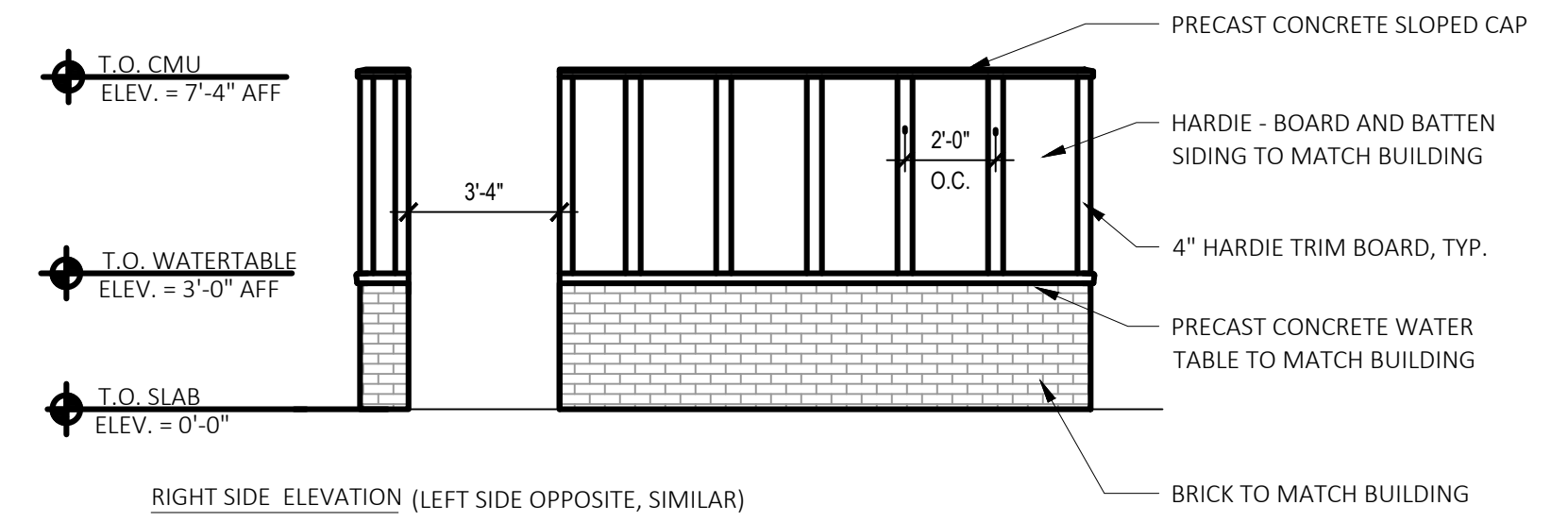
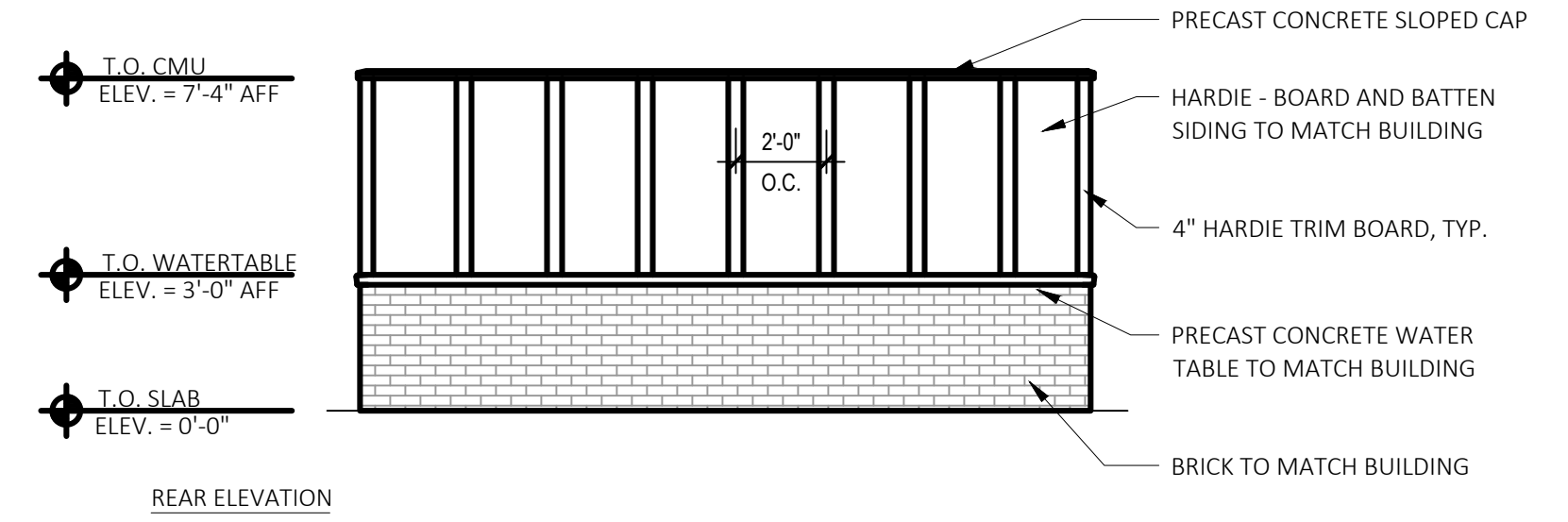
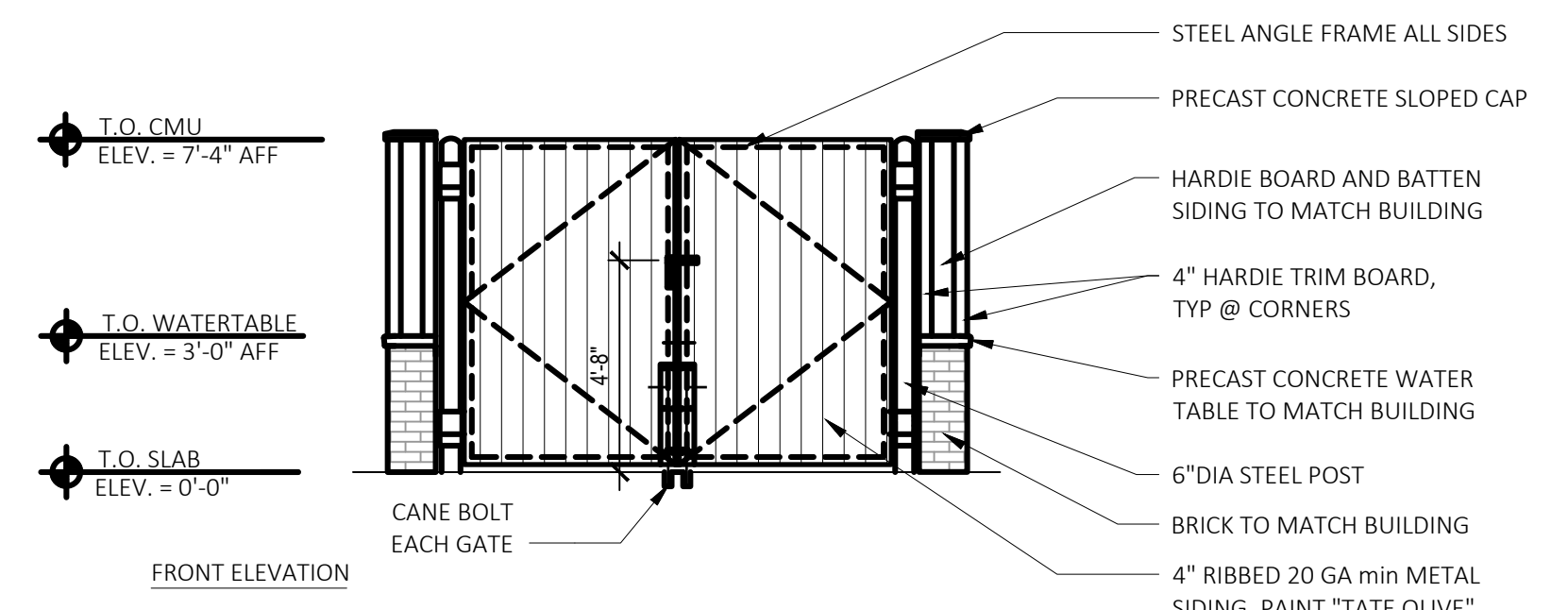
3 MONUMENT SIGN
A4.0 SCALE: 1/2" = 1'-0"



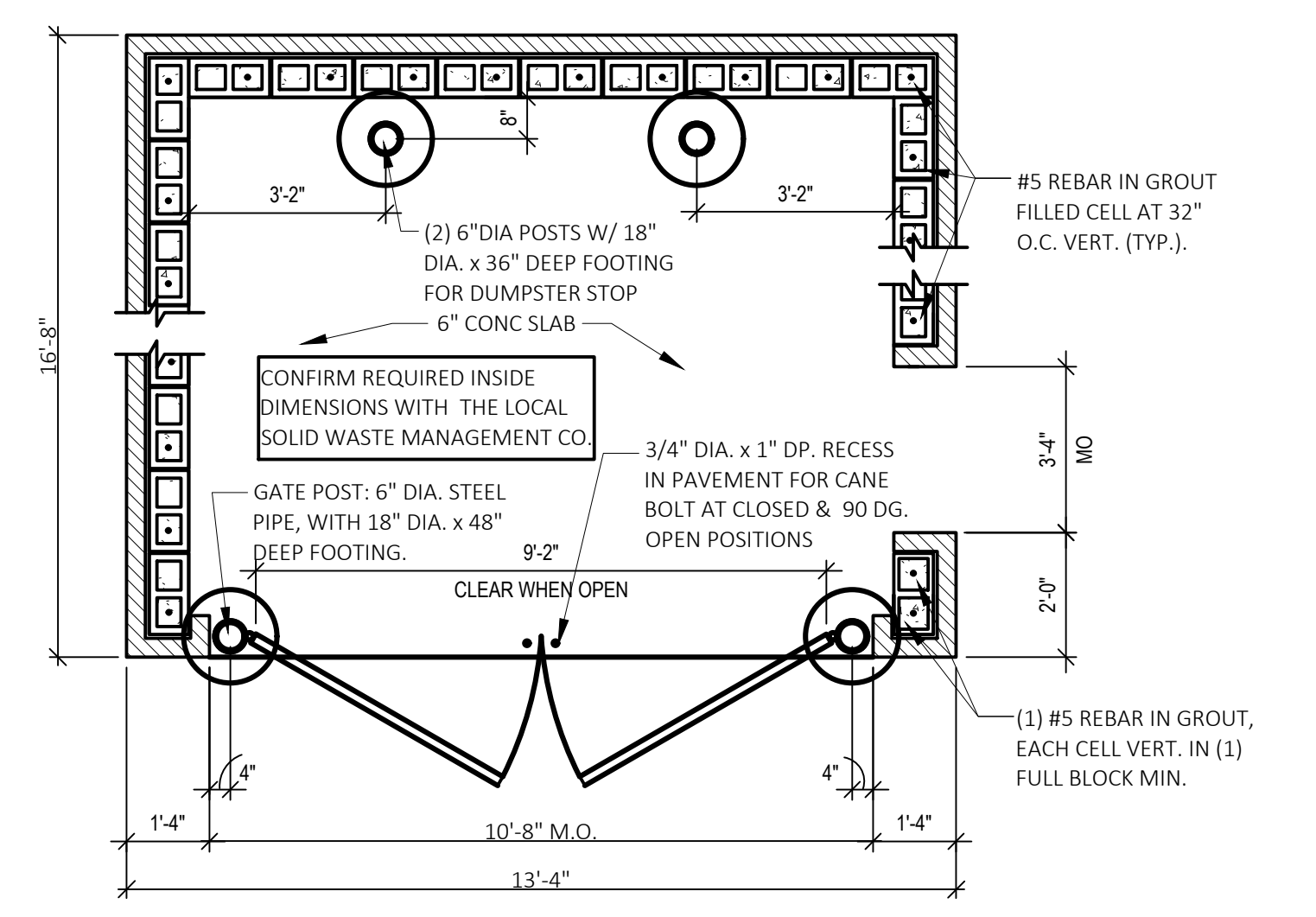
4 USPS MAIL BOX
A4.0 SCALE: 3/4" = 1'-0"



5 FLAG POLE
A4.0 SCALE: 1" = 1'-0"



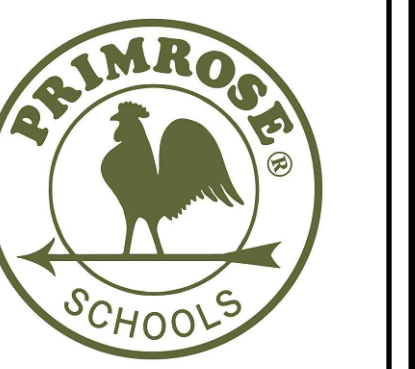
6 DUMPSTER ELEVATION
A4.0 SCALE: 1/4" = 1'-0"



7 DUMPSTER PLAN
A4.0 SCALE: 3/8" = 1'-0"

9-E-24-SU
7/29/2024

PRELIMINARY
NOT FOR CONSTRUCTION



ADA ARCHITECTS
17710 Detroit Avenue, Lakewood, Ohio 44107
Phone (216) 521-9134 Fax (216) 521-1624
www.adaarchitects.com

PRIMROSE SCHOOLS:
KNOXVILLE, TN
315 ERIN DRIVE
KNOXVILLE, TN 37919

THESE DOCUMENTS CONTAIN INFORMATION PROPRIETARY TO ADA ARCHITECTS, INC.
UNAUTHORIZED USE OF THESE DOCUMENTS IS EXPRESSLY PROHIBITED UNLESS AGREED UPON IN WRITING.

REVISIONS	
#	DATE
1	
2	
3	
4	
5	
6	
7	
8	
9	

SITE DETAILS
DATE 07/29/2024
JOB NO. 23560
A-4.0
SHEET NO.