



INTEGRATED SIGN & GRAPHIC, INC.
 5801 Kingpost Court
 Lexington, KY 40509
 Toll Free 800.755.7956
 Office 859.263.2800
 OnLine integratedsign.com

DESIGN INTENT DOCUMENT

© Copyright Integrated Sign & Graphic, Inc. This design/layout is an unpublished work of Integrated Sign & Graphic, Inc. which expressly reserves its common law rights pursuant to Title 17 Section 2 of the United States Code to prevent unauthorized copying, publication or use of this design/layout, and to obtain damages thereon. This design/layout remains the property of Integrated Sign & Graphic, Inc. unless purchased by contractual sales agreement.

Property Owner
Simon Property Group

Name of Project
West Town Mall

Project Address
**7600 Kingston Pike,
 Knoxville, TN 37919**

ISS Project Number
023194

Drawn By	Quantity
MS	1

Original Drawing Date
05.08.24

Issued Revisions

- △
- △
- △
- △
- △
- △

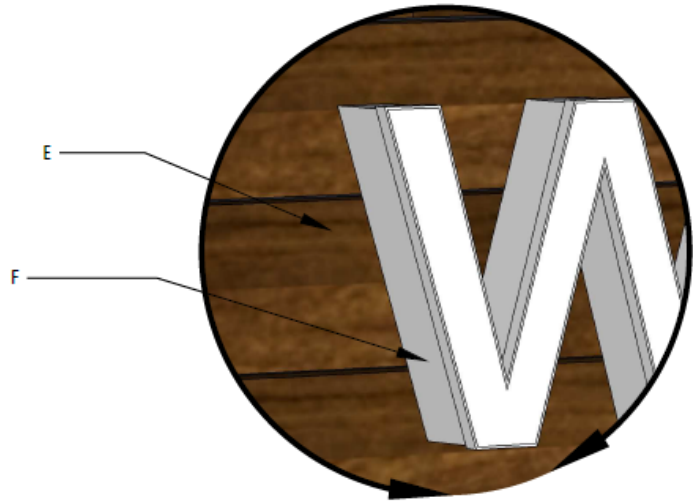
Drawing Title
**Main ID Monument
 Details**

Drawing Notes

- A. longboard link and lock battens with wood grain texture <https://longboardproducts.com/>
- B. painted aluminum back
- C. painted aluminum base
- D. concrete foundation with pedestal
- E. 2"x4" and 2"x8" aluminum tubes by longboard color: light national walnut
- F. 4" deep white channel letters white acrylic faces and white trimcap illuminated with 6500k white LED modules



01 Dimensional View
 Scale: Perspective



02 Detail A
 Scale: NTS

**9-B-24-SU
 7/17/2024**

Electrical Requirements

10 AMPS AT 120/277v REQUIRED

all electrical components used
 are UL listed and suitable for wet locations

2/ Drawing Library/West Town Mall/2023/02/3102/01/01/Sign Drawings - West Town Mall - Monument Sign

GROUNDING AND BONDING STATEMENT
 THIS SIGN IS INTENDED TO BE INSTALLED IN ACCORDANCE WITH THE REQUIREMENTS OF
 ARTICLE 600 OF THE NATIONAL ELECTRICAL CODE, NFPA 70 AND/OR OTHER APPLICABLE
 LOCAL CODES. THIS INCLUDES PROPER GROUNDING AND BONDING OF THE SIGN.
 UNDERWRITING LABORATORIES, INC.
 STANDARDS FOR SAFETY
 UL 42 - FIFTEEN EDITION - SEPTEMBER 2, 2011
 SECTION 4.2.4.1.3 (c)
 *Remote metal parts of a suction sign or outdoor lighting system only supplied by a remote Class 2
 power supply shall not be required to be bonded to an equipment bonding conductor.*



INTEGRATED SIGN & GRAPHIC, INC.
 5801 Kingpost Court
 Lexington, KY 40509
 Toll Free 800.755.7956
 Office 859.263.2800
 OnLine integratedsign.com

DESIGN INTENT DOCUMENT

© Copyright Integrated Sign & Graphic, Inc. This design/layout is an unpublished work of Integrated Sign & Graphic, Inc. which expressly reserves its common law rights pursuant to Title 17 Section 2 of the United States Code to prevent unauthorized copying. Publication or use of this design/layout, and to obtain damages thereon. This design/layout remains the property of Integrated Sign & Graphic, Inc. unless purchased by contractual sales agreement.

Property Owner
Simon Property Group

Name of Project
West Town Mall

Project Address
**7600 Kingston Pike,
 Knoxville, TN 37919**

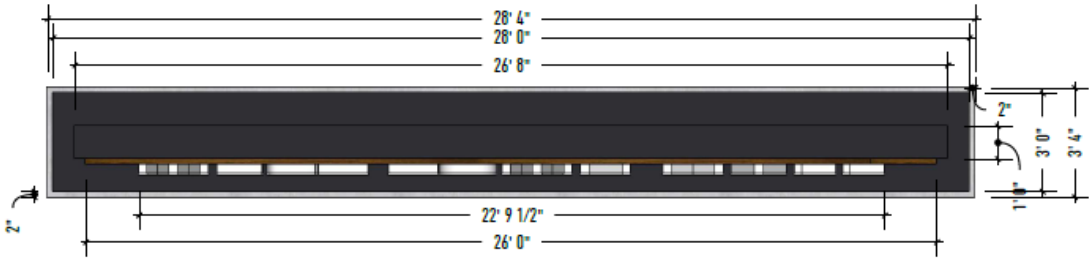
ISS Project Number
023194

Drawn By	Quantity
MS	1

Original Drawing Date
05.08.24

Issued Revisions

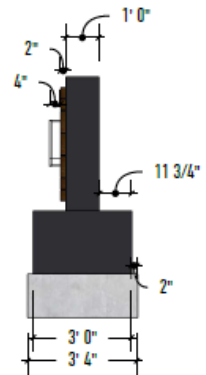
Drawing Title
**Main ID Monument
 Dimensions**



01 Top View
 Scale: 1/4" = 1'-0"



02 Front View
 Scale: 1/4" = 1'-0"



03 Right View
 Scale: 1/4" = 1'-0"

9-B-24-SU
 7/17/2024

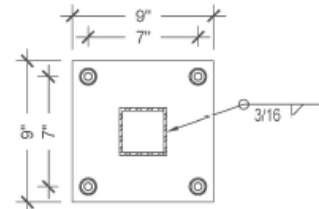
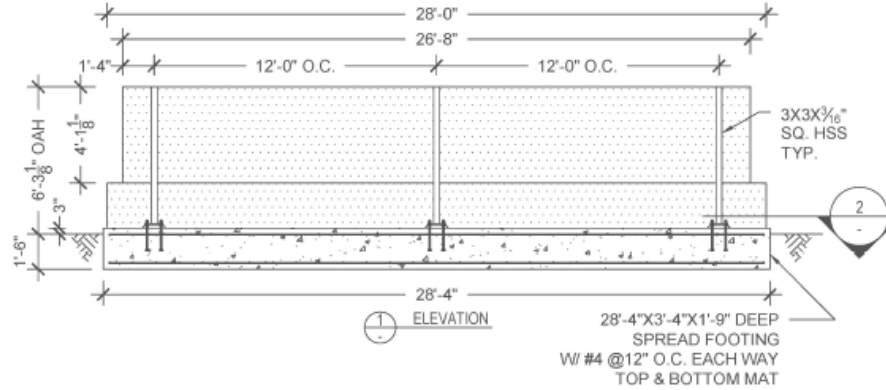
J:\Drawing Library\West Town Mall\2023\102 CAD\Shop Drawings\Layout\Shop Drawings - West Town Mall - Monument Sign



12396 WORLD TRADE DRIVE, SUITE 312
 SAN DIEGO, CA 92128
 PROJECTMANAGER@SULLAWAYENG.COM
 PHONE: 1-858-312-5150 FAX: 1-858-777-3534

PROJECT: WEST TOWN MALL, 7600 KINGSTON PIKE, KNOXVILLE, TN
 PROJECT #: 45633
 CLIENT: INTEGRATED SIGN & GRAPHIC

DATE: 05/08/2024
 ENGINEER: HL
 LAST REVISED:



9"X9"X $\frac{5}{16}$ " STEEL PLATE
 W/ (4) $\frac{1}{2}$ " \varnothing THREADED ANCHOR RODS
 MIN. EMBED.=12" INTO CONCRETE
 W/ NUT/WASHER/NUT @ EMBED. END
 2. BASE PLATE, TYP.

GENERAL NOTES

- DESIGN CODE: IBC 2018
- DESIGN LOADS: ASCE 7-16
- WIND VELOCITY 105 MPH EXPOSURE C
- CONCRETE 2500 PSI MINIMUM
- SQ. HSS STEEL ASTM A500 GR. B, $F_y = 46$ KSI MIN.
- PLATE STEEL ASTM A36
- WELDING STRENGTH, $F_{exx} = 70$ KSI MIN.
- THREADED ANCHOR ROD STEEL ASTM F1554 GR. 36 $F_u = 58$ KSI MIN.
- STEEL REINFORCEMENT IN CONCRETE ASTM A615 GR 60
- PROVIDE MIN. 3" CLEAR COVER ON ALL STEEL EMBEDDED IN CONCRETE WHEN CAST AGAINST SOIL
- VERTICAL SOIL BEARING PER IBC CLASS 4 (2000 PSF)
- PROVIDE PROTECTION AGAINST DISSIMILAR METALS
- ALL DIMENSIONS TO BE VERIFIED PRIOR TO FABRICATION



INTEGRATED SIGN & GRAPHIC, INC.
 5801 Kingpost Court
 Lexington, KY 40509
 Toll Free 800.755.7956
 Office 859.263.2800
 OnLine integratedsign.com

DESIGN INTENT DOCUMENT

© Copyright Integrated Sign & Graphic, Inc. This design/layout is an unpublished work of Integrated Sign & Graphic, Inc. which expressly reserves its common law rights pursuant to Title 17 Section 7 of the United States Code to prevent unauthorized copying, publication or use of this design/layout, and to obtain damages thereon. This design/layout remains the property of Integrated Sign & Graphic, Inc. unless purchased by contractual sales agreement.

Property Owner
Simon Property Group

Name of Project
West Town Mall

Project Address
**7600 Kingston Pike,
 Knoxville, TN 37919**

ISS Project Number
023194

Drawn By	Quantity
MS	1

Original Drawing Date
05.08.24

Issued Revisions

- △
- △
- △
- △
- △
- △

Drawing Title
Engineering

Page 6

9-B-24-SU
 7/17/2024

L12V60UNV-R

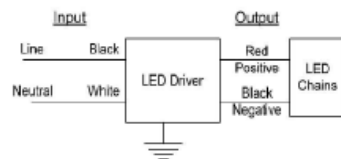


- 12 Volt 60 Watt Class 2 LED Driver**
- Universal input voltage 120 – 277 Vac
 - Damp and Dry Location Rated
 - Class 2 Output

Performance	
Input Voltage	120 ~ 277 Vac
Input Current Max	1.2A @ 120Vac 0.7 @ 277Vac
Input Power Max	72W
Input Frequency	50 - 60 (Hz)
Efficiency	> 85 % @ 120Vac > 87 % @ 277Vac
Output Voltage	12V
Output Current	5.0A
Output Power	60W
Line Regulation	±5 %
Load Regulation	±5 %
Output Voltage Ripple	< 1000mVp-p
Output Current Ripple	< 500mA p-p
Inrush Current	120V: 40A / 160uS
Peak / >50% Duration	277V: 105A / 160uS

* Refer to charts for additional information
 - Harmonic Emissions comply with ANSI C82.77
 - Inrush current complies with NEMA 410

Wiring Diagram:



Physical	
Length	5.50 in (140 mm)
Width	1.70 in (43.2 mm)
Height	1.18 in (30.0 mm)
Mounting Length	5.24 in (133.0 mm)
Weight (lbs)	0.8
Lead Lengths	
Blk, Wht	12.5 in (317.5mm)
Red(+), Black(-)	12.5 in (317.5mm)

Environmental	
EMI and RFI	Meets FCC part 15 (Class A) Non-Consumer Limits
Operating Temperature	-40°C to 55°C (-40°F to 131°F)
Storage Temperature	-40°C to 85°C (-40°F to 185°F)
tc	85°C max for warranty 90°C max for UL
Protection Rating	UL Dry & Damp
Transient Protection	IEEE C62.41 2.5kV

Protection
 Over Voltage, Under Voltage, Short Circuit, Over Temp
 Safety:
 UL 8750
 UL Class P

Ordering Information		
Order Number	Description	Qty/Carton
L12V60UNV-R0001	12V 5.0A	10

Application and operation performance specification information subject to change without notification.

Z:\Product Library\West Town Mall\2023\02 CAD\Shop Drawings\Drawings\Layout\Shop Drawings\West Town Mall - Mounting Sign

LED Module – ECO4

Applications:

Zlight ECO4 white LED modules are designed for channel letters and sign cabinets with a 2 to 10 inch can depth. With revolutionary high efficacy LEDs, you can achieve tremendously money-saving advantages over traditional neon and fluorescent tubes. The optimum lens covering LEDs create an impressively even light coverage of the letter and sign face.

Features

LEDs:

L70 Rating 50,000 hours

System:

Input Voltage: 12 VDC
 2 modules per foot
 100 modules per bag, 20 bags per carton
 PeeH-N-Stick and mechanical fastening, Waterproof, IP65
 Voltage Drop Prevention (VDP) Technology
 UL and cUL Recognized/SAM Listed
 Working Temperature: -13°F – 140°F
 Warranty: 7 Years

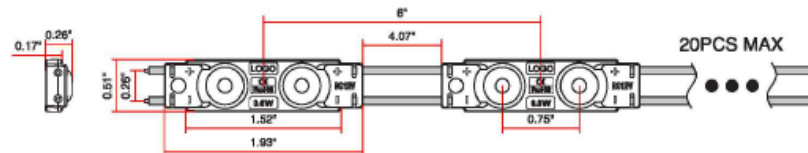


Superior Efficacy: 165 LM/W

Detail Specifications

Model	Voltage (VDC)	Power (W)	# of LEDs	Module / FT	Color	Brightness		View Angle	Qty per 60W P.S.
						lm/module	lm/ft		
Z-ECO4-W	12	0.6	2	2	White (7,100K)	99	198	160°	100
Z-ECO4-40K	12	0.6	2	2	White (4,000K)	99	198	160°	100
Z-ECO4-50K	12	0.6	2	2	White (5,000K)	99	198	160°	100
Z-ECO4-10K	12	0.6	2	2	White (10,000K)	99	198	160°	100

Distance from Face	2"	2.5"	3"	4"	5"	6" – 10"
Spacing Row to Row	4"	5"	6"	8"	8"	9"
Module Spacing	3.5"	4"	5"	6"	6"	6"



Zlight Technology LLC
 325 Funston St. Elmwood, LA 70123
www.zlighttech.com

Phone: 504-322-4516
 Fax: 504-836-0008
 Updated: 10/28/2022

9-B-24-SU
 7/17/2024

INTEGRATED SIGN & GRAPHIC, INC.
 5801 Kingpost Court
 Lexington, KY 40509
 Toll Free 800.755.7956
 Office 859.263.2800
 Online integratedsign.com

DESIGN INTENT DOCUMENT

© Copyright Integrated Sign & Graphic, Inc. This design/layout is an unpublished work of Integrated Sign & Graphic, Inc. which expressly reserves its common law rights pursuant to Title 17 Section 7 of the United States Code to prevent unauthorized copying, publication or use of this design/layout, and to obtain damages thereon. This design/layout remains the property of Integrated Sign & Graphic, Inc. unless purchased by contractual sales agreement.

Property Owner
 Simon Property Group

Name of Project
 West Town Mall

Project Address
 7600 Kingston Pike,
 Knoxville, TN 37919

ISS Project Number
 023194

Drawn By
 MS
 Quantity
 1

Original Drawing Date
 05.08.24

Issued Revisions



Drawing Title

LED and Driver
 Information