



100 Fort Sanders West Knoxville, TN Exterior Master Sign Plan

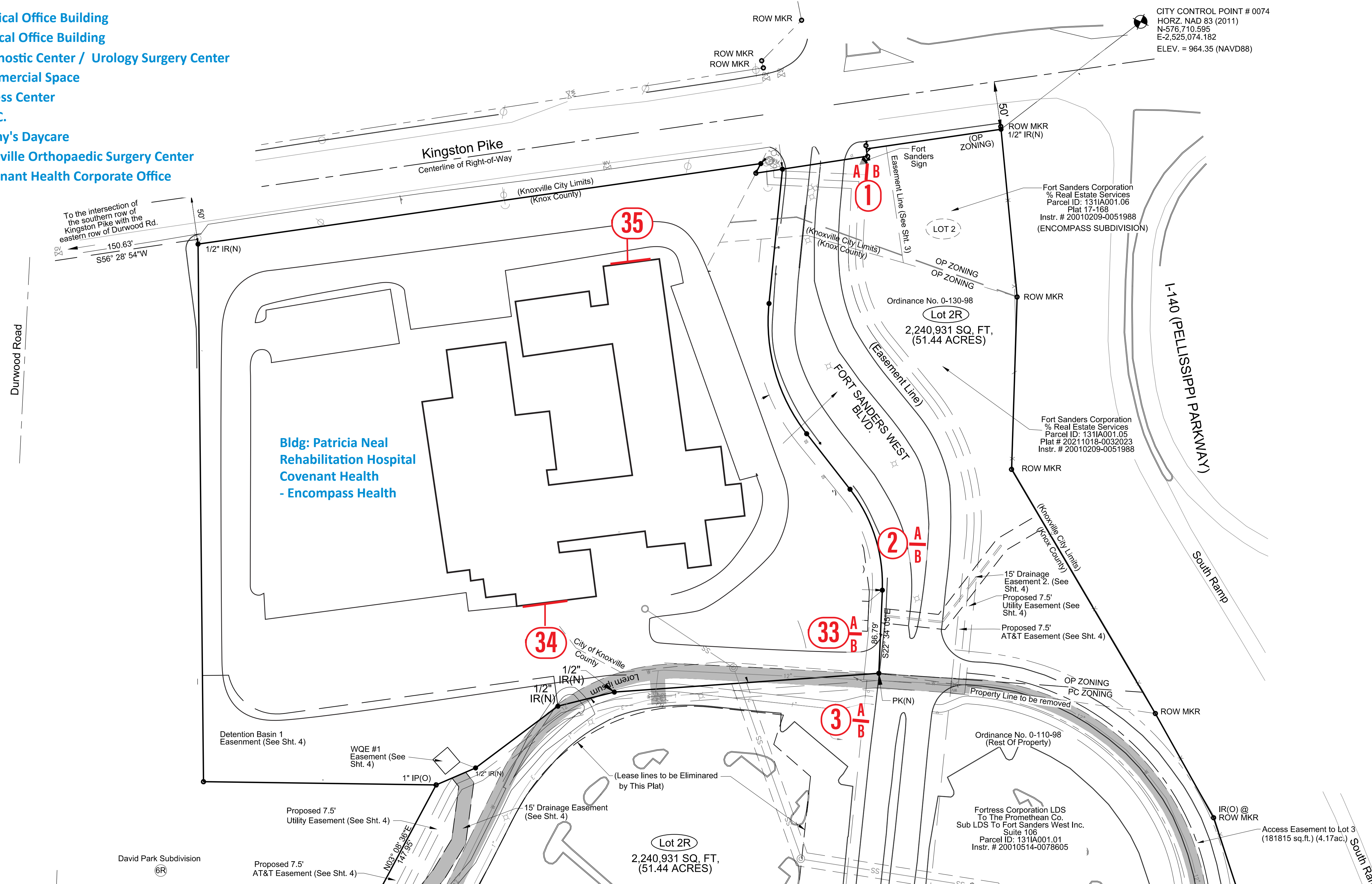
REV June 21, 2022
REV March 1, 2023
REV March 29, 2023
REV April 10, 2023
REV April 26, 2024
REV May 29, 2024

6-D-24-SU
Revised: 5/29/2024



1301 Antioch Pike
Nashville, TN 37211
p. 615-885-2900
f. 615-885-2989

- Bldg 1 - Medical Office Building
- Bldg 2 - Medical Office Building
- Bldg 3 - Diagnostic Center / Urology Surgery Center
- Bldg 4 - Commercial Space
- Bldg 5 - Fitness Center
- Bldg 6 - K.O.C.
- Bldg 7 - Nanny's Daycare
- Bldg 8 - Knoxville Orthopaedic Surgery Center
- Bldg 9 - Covenant Health Corporate Office



Match Line Sheet 2

Match Line Sheet 2



Covenant Health
100 Fort Sanders West
 Knoxville, TN

Date: 3/29/23

Revised: 04/26/24 - RPB

Designer: CTP

00 Campus - Exterior
 File Name: Sign Location Plan
 C:\Covenant Health\Covenant Health West\Survey Documents\Drawings

Project Manager: TS

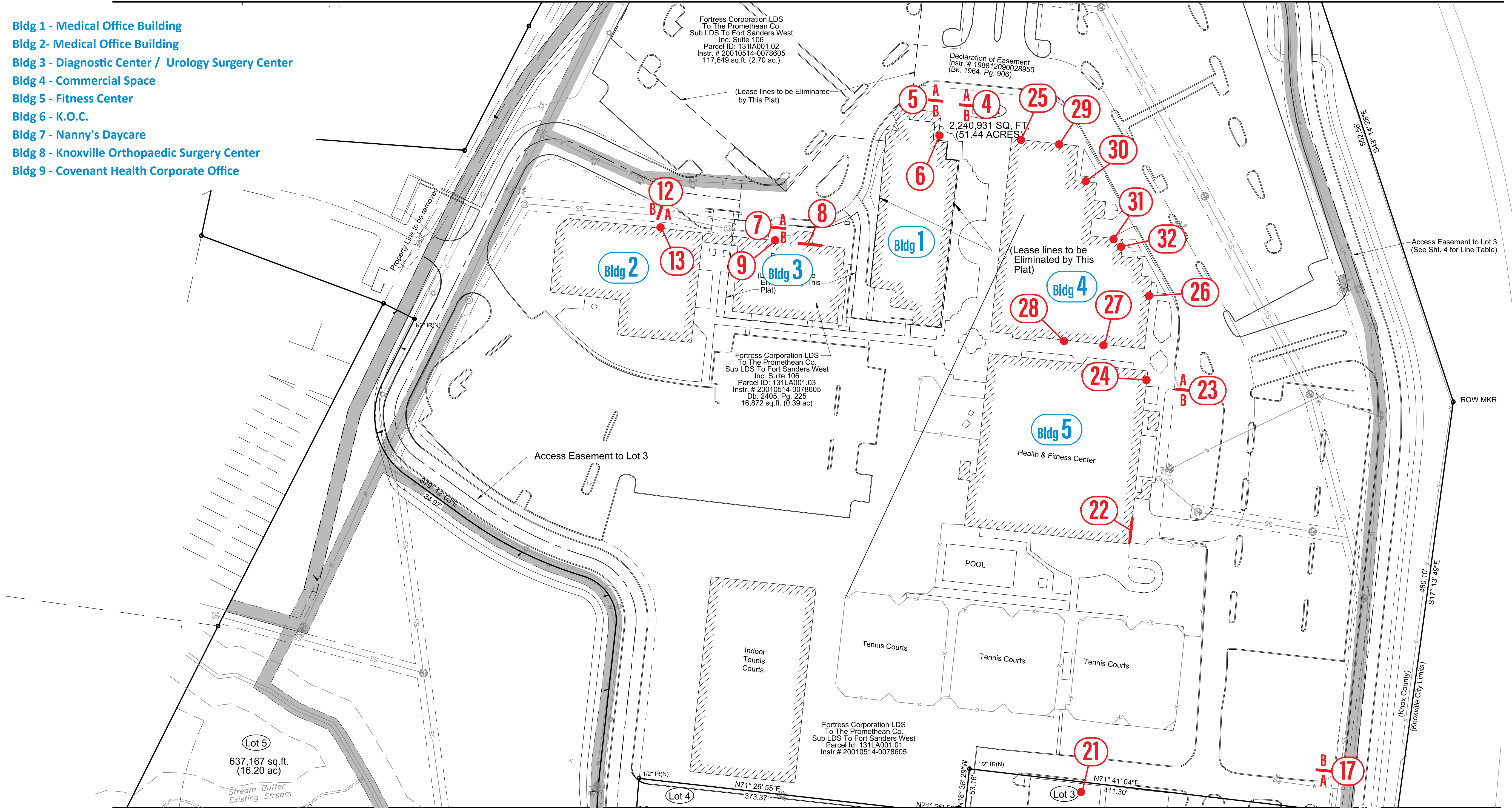
Sign Location Plan
1 of 3
 Exterior



1301 Antioch Pike, Nashville, TN 37211
 p. 615-885-2900 | f. 615-885-2989

This design is being submitted for use as a product being manufactured for you by Signcraft, Inc. It is not to be reproduced, copied or manufactured by you or given to any other manufacturer without written permission from Signcraft, Inc. Unauthorized use is subject to design charge and will include any collection fees.

- Bldg 1 - Medical Office Building
- Bldg 2 - Medical Office Building
- Bldg 3 - Diagnostic Center / Urology Surgery Center
- Bldg 4 - Commercial Space
- Bldg 5 - Fitness Center
- Bldg 6 - K.O.C.
- Bldg 7 - Nanny's Daycare
- Bldg 8 - Knoxville Orthopaedic Surgery Center
- Bldg 9 - Covenant Health Corporate Office



Covenant Health
 100 Fort Sanders West
 Knoxville, TN

Date: 3/29/23

Revised:

Designer: CTP

00 Campus - Exterior
 File Name: Sign Location Plan
 C:\Covenant Health\Covenant Health West\Survey Documents\Drawings

Project Manager: TS

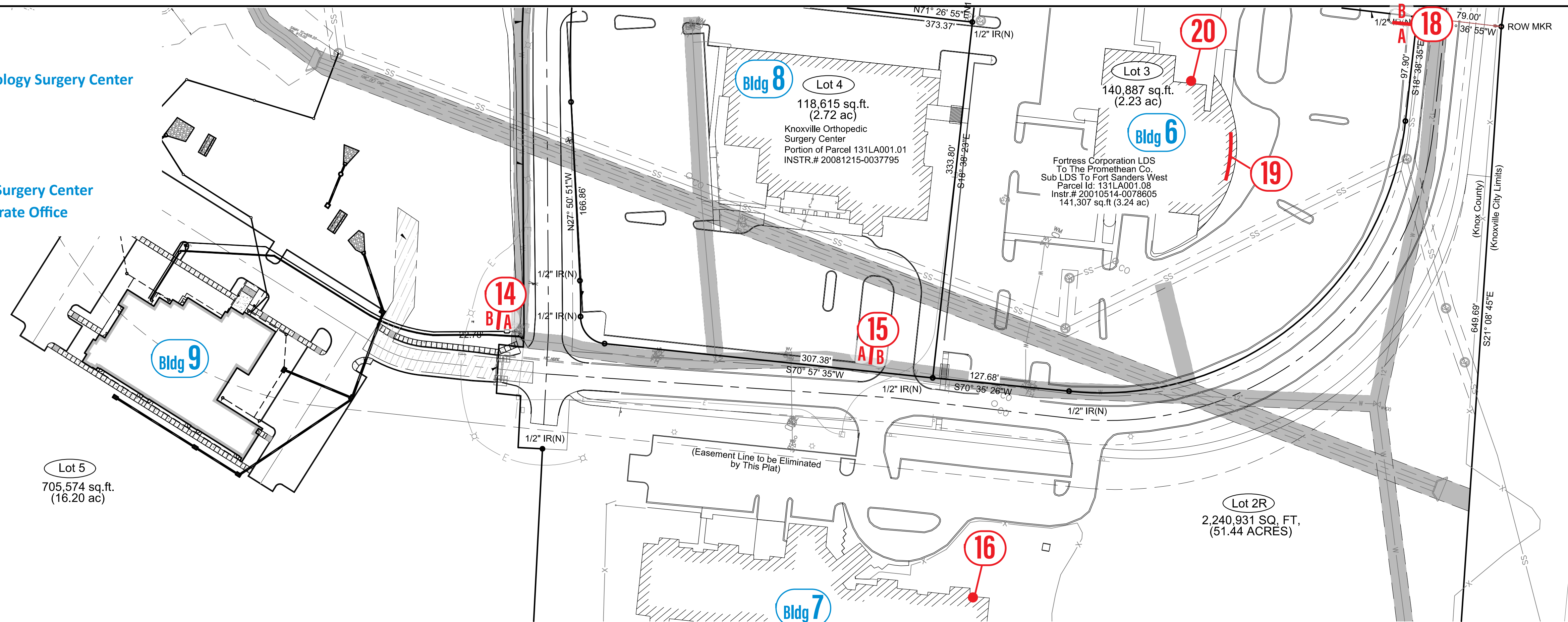
Sign Location Plan
 2 of 3
 Exterior



1301 Antioch Pike, Nashville, TN 37211
 p. 615-885-2900 | f. 615-885-2989

This design is being submitted for use as a product being manufactured for you by Signcraft, Inc. It is not to be reproduced, copied or manufactured by you or given to any other manufacturer without written permission from Signcraft, Inc. Unauthorized use is subject to design charge and will include any collection fees.

- Bldg 1 - Medical Office Building
- Bldg 2 - Medical Office Building
- Bldg 3 - Diagnostic Center / Urology Surgery Center
- Bldg 4 - Commercial Space
- Bldg 5 - Fitness Center
- Bldg 6 - K.O.C.
- Bldg 7 - Nanny's Daycare
- Bldg 8 - Knoxville Orthopaedic Surgery Center
- Bldg 9 - Covenant Health Corporate Office



I-140 (PELLISSIPPI PARKWAY)



Covenant Health
 100 Fort Sanders West
 Knoxville, TN

Date: 3/29/23

Revised:

Designer: CTP

00 Campus - Exterior

File Name: Sign Location Plan
 C:\Covenant Health\Covenant Health\Covenant Health
 West\Survey Documents\Drawings

Project Manager: TS

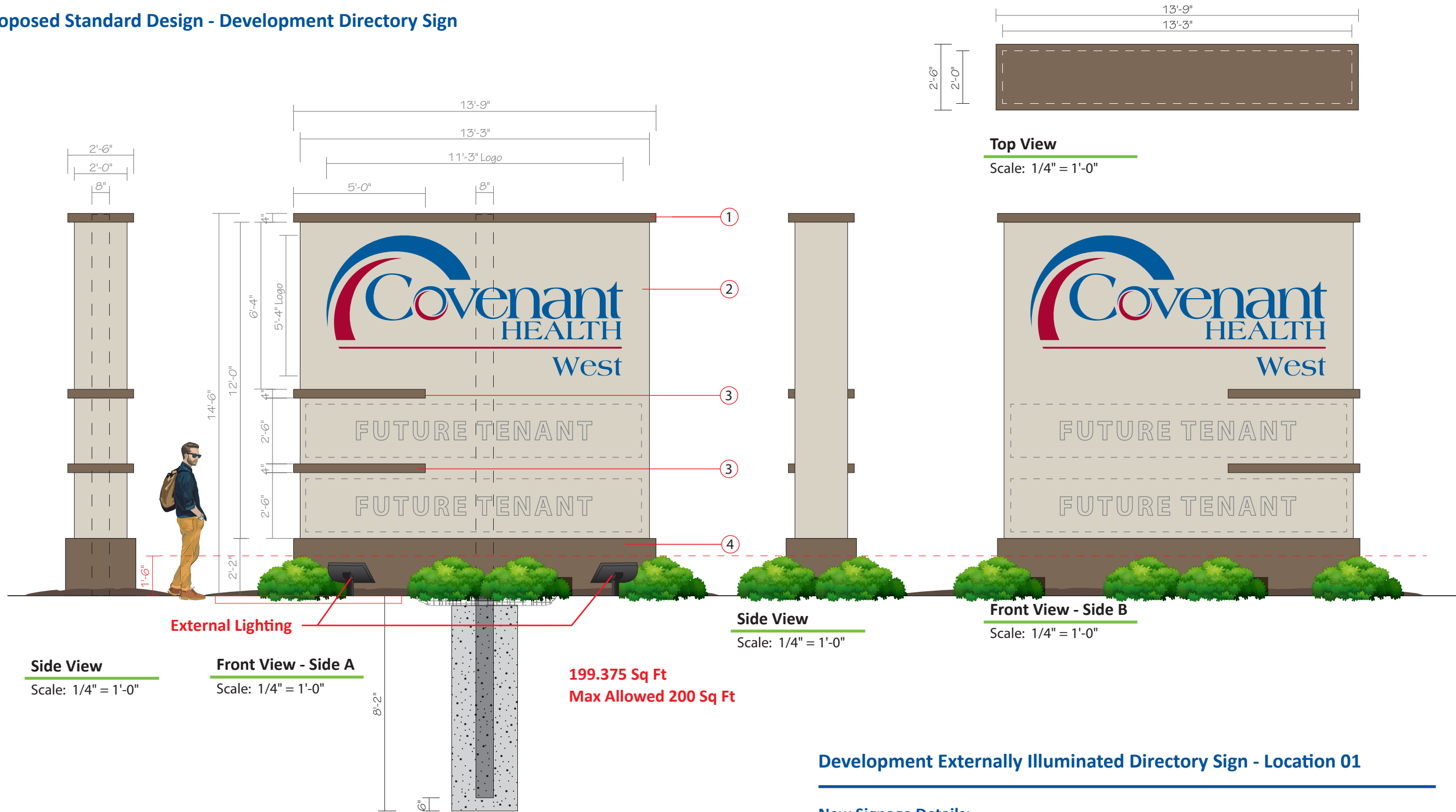
Sign Location Plan
 3 of 3
 Exterior



1301 Antioch Pike, Nashville, TN 37211
 p. 615-885-2900 | f. 615-885-2989

This design is being submitted for use as a product being manufactured for you by Signcraft, Inc. It is not to be reproduced, copied or manufactured by you or given to any other manufacturer without written permission from Signcraft, Inc. Unauthorized use is subject to design charge and will include any collection fees.

Proposed Standard Design - Development Directory Sign



199.375 Sq Ft
Max Allowed 200 Sq Ft

Development Externally Illuminated Directory Sign - Location 01

New Signage Details:

- ① 30" deep Fabricated Aluminum Cap, painted to match PMS 7531c.
- ② 24" deep Fabricated Aluminum cabinet with .125" Aluminum faces. All visible surfaces painted PMS 7527c. Logo to be first surface 1/2" thick flat cut acrylic letters painted first surface and edges to match PMS 294c and PMS 201c, mechanically fastened to sign with studs and wing nuts to secure.
- ③ 30" deep Fabricated Aluminum Accent Bars, painted to match PMS 7531c.
- ④ 30" deep Fabricated aluminum skirt painted to match building PMS 7531c to match Cap and Accent Bars.

Sign to be mounted on 8" schedule 40 steel round pipe. Direct burial 8'-2" deep in concrete. Pipe to have 6" Clearance at bottom. Sign must be installed per engineered drawings.

Notes:

GC to provide 20A/177V electrical circuit within 3'-0" of sign for external illumination.

Covenant Health West

Date: 3/29/23

Revised: _____

Designer: RB

01 Development
File Name: Directory Sign

C:\Covenant Health\Covenant Health West\Survey Documents\Drawings

Project Manager: TS

Development Directory Sign

Non Illuminated
Monument Sign



1301 Antioch Pike, Nashville, TN 37211
p. 615-885-2900 | f. 615-885-2989

This design is being submitted for use as a product being manufactured for you by Signcraft, Inc. It is not to be reproduced, copied or manufactured by you or given to any other manufacturer without written permission from Signcraft, Inc. Unauthorized use is subject to design charge and will include any collection fees.

Signs must meet the following local codes and regulations:

Article 13.5.A. (General Sign Standards, Minimum Setbacks)

1. All detached on-premise signs must be set back no less than ten feet from a street right-of-way or 15 feet from the edge of pavement, whichever is greater.
2. All detached on-premise signs must be set back no less than five feet from all side and rear property lines that are not also street right-of-way
3. Directional or information signs may be allowed closer than the minimum setback from a right-of-way or pavement with the approval of the City Engineer.

Article 13.5.C.2. (Illumination Standards)

2. External illumination

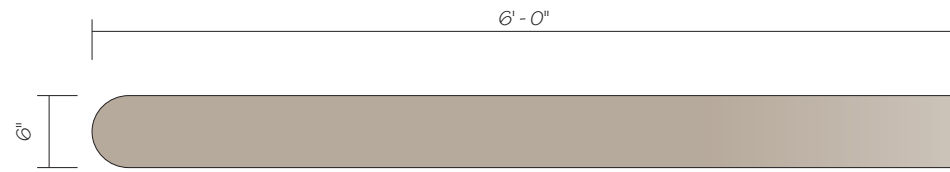
1. Externally illuminated signs must be shielded from adjacent buildings and streets, and cannot cause glare or other nuisances to adjacent land uses or traffic. Projecting light fixtures used for externally illuminated signs must not obscure the sign.

Article 13.5.E. (Landscape Requirements for Detached Signs)

Landscape Requirements for Detached Signs

- E. For all detached signs located within the front yard of a property, a landscape area of at least one-half the area of the sign must be provided and maintained around the base or support structure of the detached sign. Plant material used in the landscape area must have a mature height of less than 42 inches in height. For the purpose of these regulations a landscape area is an area reserved for the addition or augmentation of shrubs, plants, turf grasses, and other natural and decorative features.

Proposed Standard Design - Building Monument Sign



Top View

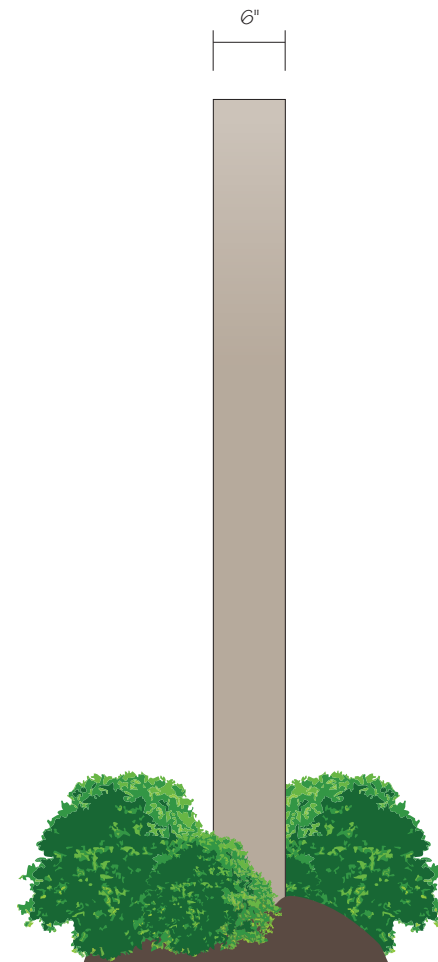
Scale: 3/4" = 1'-0"



Front View

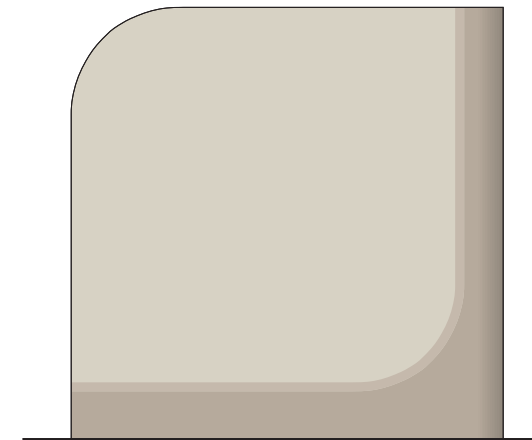
Scale: 3/4" = 1'-0"

Total = 36 Sq Ft per face.



Side View

Scale: 3/4" = 1'-0"



Back View

Scale: 3/8" = 1'-0"

Building Monument ID – Detached Sign Standards

Aluminum Sign Cabinet

- Sign Cabinet can be single faced or double faced
- Sign Cabinet must not be internally illuminated.
- Sign Cabinet may be externally illuminated.
 - External illumination achieved by landscaping lighting – as recommended by landscape architect. Fixtures must be LED illuminated, finished in black No more than (2) fixtures per sign
 - Fixtures cannot be visible from public right-of-way
- Sign Cabinet is limited to 6' - 0" tall x 6' - 0" wide x 6" deep
- Sign Cabinet must be fabricated aluminum and painted with following color scheme:
- Color Scheme: Faces masked and painted Dark Khaki – PMS 7529C, Medium Khaki – PMS 7528C, Light Khaki – PMS 7527C. Returns painted Medium Khaki – PMS 7528C.
- Letters and logo icons have no font or color restrictions.

Bases & Landscaping

- Masonry bases are not required. Signs are saddle mounted with thru bolt, 2 1/2" diameter mounting tube with welded plate on base for mechanical bolting to concrete pad.
- Sign must be attached to concrete pad per engineered drawings.
- Appropriate landscaping must surround sign, this includes mulch and plants that will not grown over 42" in height

No more than (1) Building Monument ID is allowed per building.

Covenant Health West

Date: 3/29/23

Revised: _____

Designer: CTP

File Name: Building Monument Sign

C:\Covenant Health\Covenant Health West\Survey Documents\Drawings

Project Manager: TS

**Building Sign
Non-Illuminated
Monument Sign**



1301 Antioch Pike, Nashville, TN 37211
p. 615-885-2900 | f. 615-885-2989

This design is being submitted for use as a product being manufactured for you by Signcraft, Inc. It is not to be reproduced, copied or manufactured by you or given to any other manufacturer without written permission from Signcraft, Inc. Unauthorized use is subject to design charge and will include any collection fees.

Signs must meet the following local codes and regulations:

Article 13.5.A. (General Sign Standards, Minimum Setbacks)

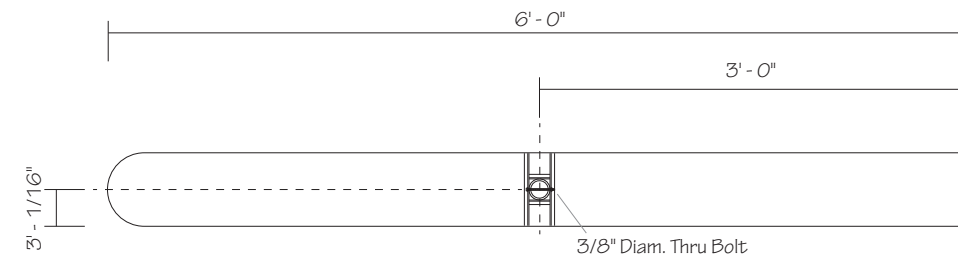
1. All detached on-premise signs must be set back no less than ten feet from a street right-of-way or 15 feet from the edge of pavement, whichever is greater.
2. All detached on-premise signs must be set back no less than five feet from all side and rear property lines that are not also street right-of-way
3. Directional or information signs may be allowed closer than the minimum setback from a right-of-way or pavement with the approval of the City Engineer.

Article 13.5.C.2. (Illumination Standards)

2. External illumination

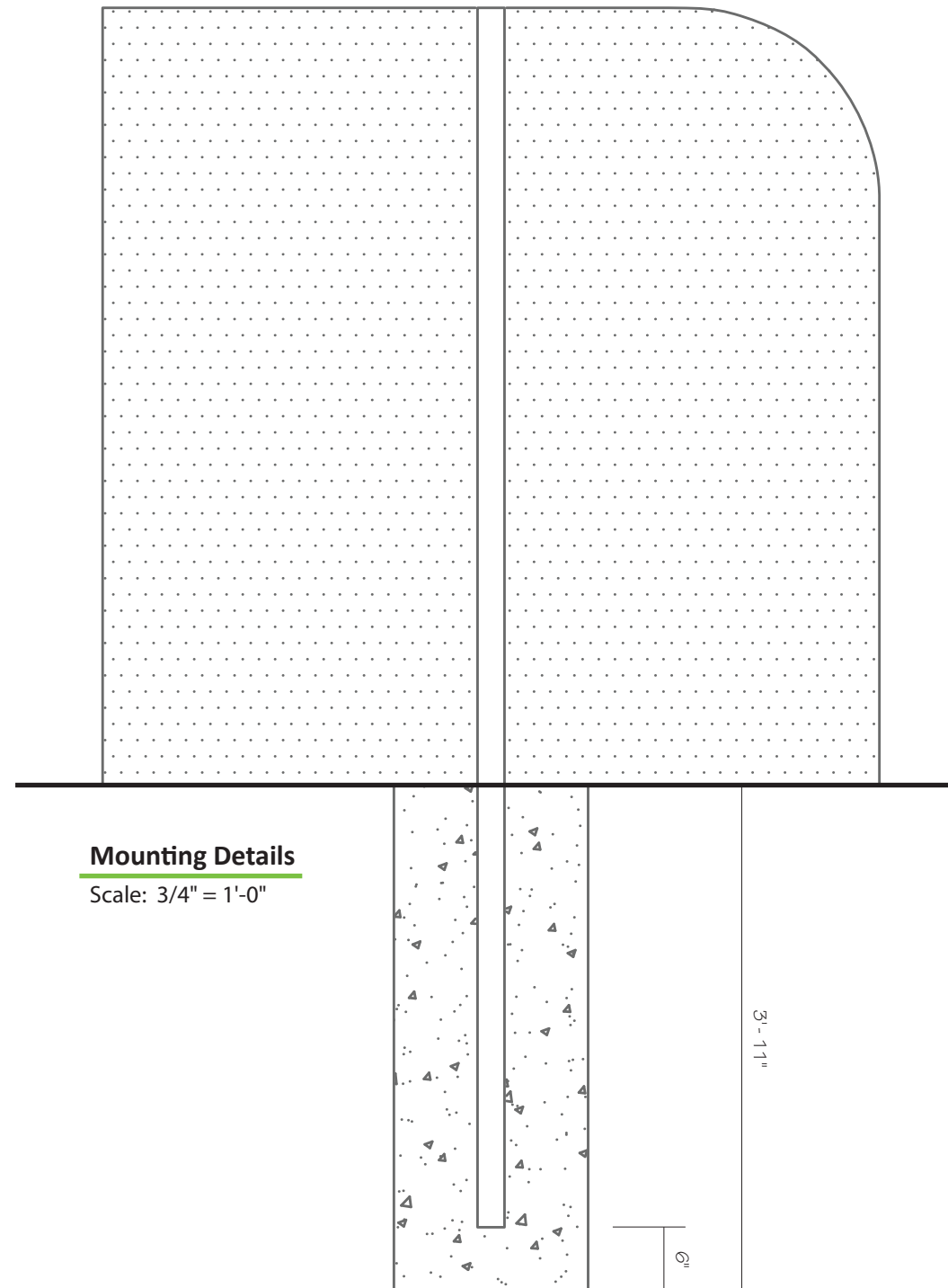
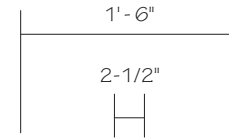
1. Externally illuminated signs must be shielded from adjacent buildings and streets, and cannot cause glare or other nuisances to adjacent land uses or traffic. Projecting light fixtures used for externally illuminated signs must not obscure the sign.

Proposed Standard Design - Building Monument Sign



Top View Mounting Detail

Scale: 3/4" = 1'-0"



Mounting Details

Scale: 3/4" = 1'-0"

Covenant Health West

Date: 3/29/23

Revised: _____

Designer: CTP

File Name: Building Monument Sign

C:\Covenant Health\Covenant Health West\Survey Documents\Drawings

Project Manager: TS

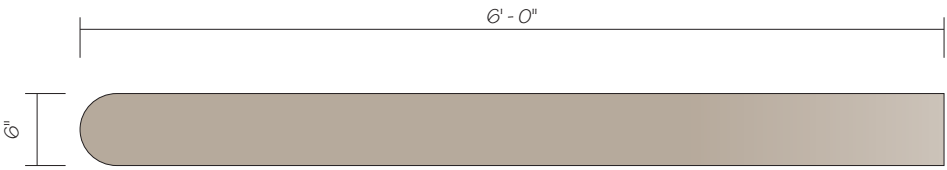
**Building Sign
Non-Illuminated**
Monument Sign



1301 Antioch Pike, Nashville, TN 37211
p. 615-885-2900 | f. 615-885-2989

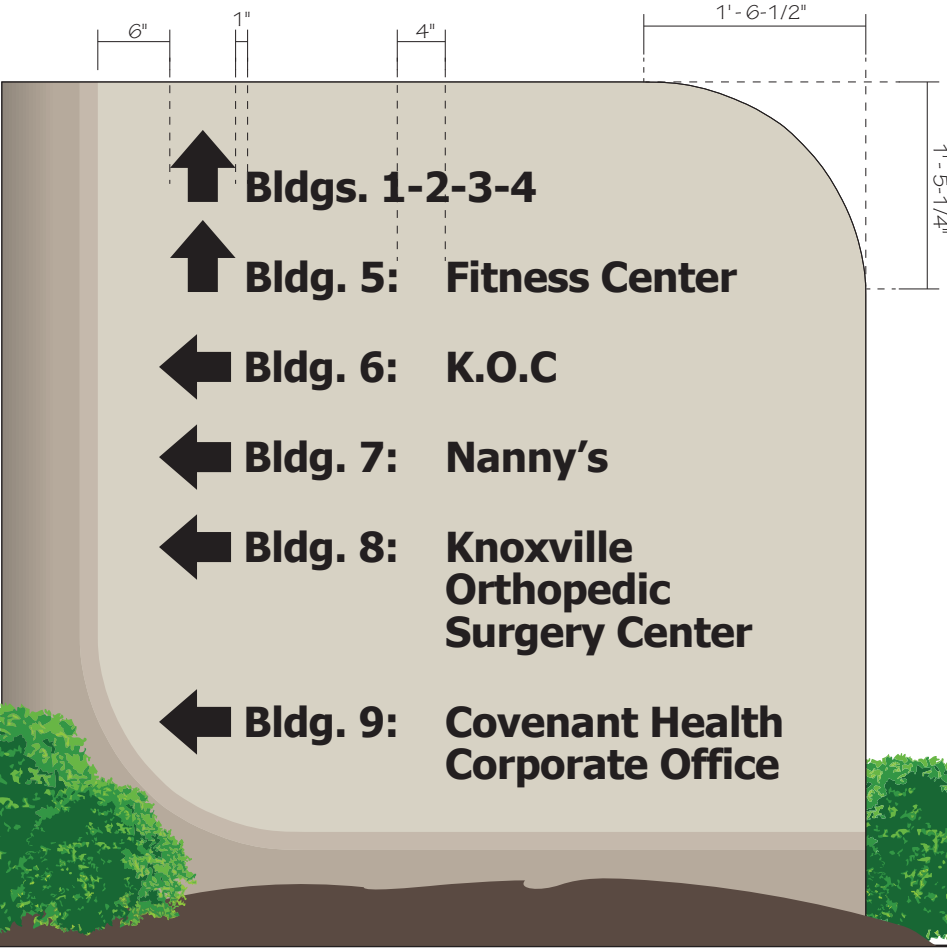
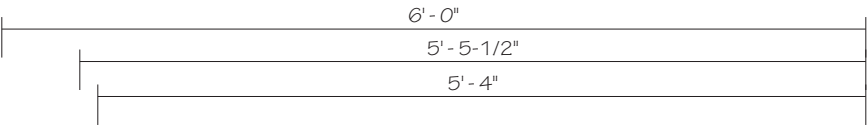
This design is being submitted for use as a product being manufactured for you by Signcraft, Inc. It is not to be reproduced, copied or manufactured by you or given to any other manufacturer without written permission from Signcraft, Inc. Unauthorized use is subject to design charge and will include any collection fees.

Proposed Standard Design - Directional Detached Sign Standard



Top View

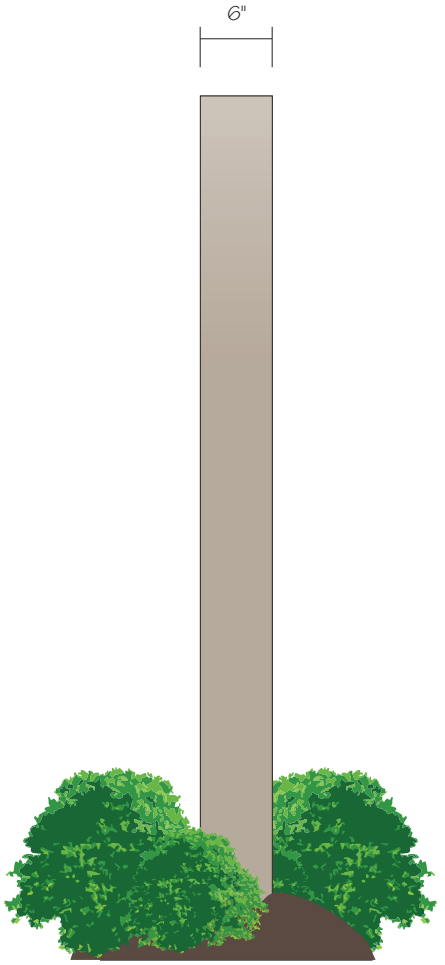
Scale: 3/4" = 1'-0"



Front View

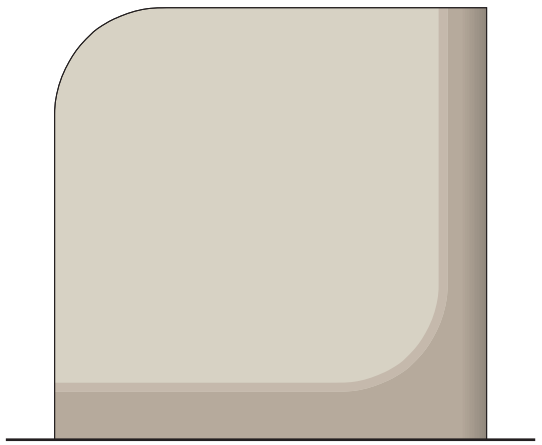
Total = 36 Sq Ft Per Face

Scale: 3/4" = 1'-0"



Side View

Scale: 3/4" = 1'-0"



Back View

Scale: 3/8" = 1'-0"

Proposed Standard Design for Property

Directional Sign – Detached Sign Standards

Aluminum Sign Cabinet

- Sign Cabinet can be single faced or double faced
- Sign Cabinet must not be internally illuminated.
- Sign Cabinet may be externally illuminated.
 - External illumination achieved by landscaping lighting – as recommended by landscape architect.
 - Fixtures must be LED illuminated, finished in black
 - No more than (2) fixtures per sign
 - Fixtures cannot be visible from public right-of-way
- Sign Cabinet is limited to 6' - 0" tall x 6' - 0" wide x 6" deep
- Sign Cabinet must be fabricated aluminum and painted with following color scheme:
- Color Scheme: Faces masked and painted Dark Khaki – PMS 7529C, Medium Khaki – PMS 7528C, Light Khaki – PMS 7527C. Returns painted Medium Khaki – PMS 7528C.
- Letters and logo icons have no font or color restrictions.

Bases & Landscaping

- Masonry bases are not required. Signs are saddle mounted with thru bolt, 2 1/2" diameter mounting tube with welded plate on base for mechanical bolting to concrete pad.
- Sign must be attached to concrete pad per engineered drawings.
- Appropriate landscaping must surround sign, this includes mulch and plants that will not grown over 42" in height

Only one project directional sign is permitted per intersection on the same side of the collector or arterial street.

Placement/Location of Building Monument signs must meet all local codes and regulations.

Covenant Health West

Date: 3/29/23

Revised: _____

Designer: CTP

File Name: Directional Monument Sign

C:\Covenant Health\Covenant Health West\Survey Documents\Drawings

Project Manager: TS

Directional Sign Non-Illuminated Monument Sign



1301 Antioch Pike, Nashville, TN 37211
p. 615-885-2900 | f. 615-885-2989

This design is being submitted for use as a product being manufactured for you by Signcraft, Inc. It is not to be reproduced, copied or manufactured by you or given to any other manufacturer without written permission from Signcraft, Inc. Unauthorized use is subject to design charge and will include any collection fees.

Signs must meet the following local codes and regulations:

Article 13.5.A. (General Sign Standards, Minimum Setbacks)

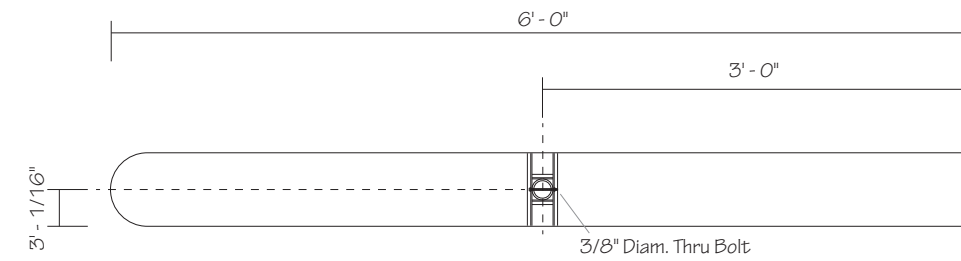
1. All detached on-premise signs must be set back no less than ten feet from a street right-of-way or 15 feet from the edge of pavement, whichever is greater.
2. All detached on-premise signs must be set back no less than five feet from all side and rear property lines that are not also street right-of-way
3. Directional or information signs may be allowed closer than the minimum setback from a right-of-way or pavement with the approval of the City Engineer.

Article 13.5.C.2. (Illumination Standards)

2. External illumination

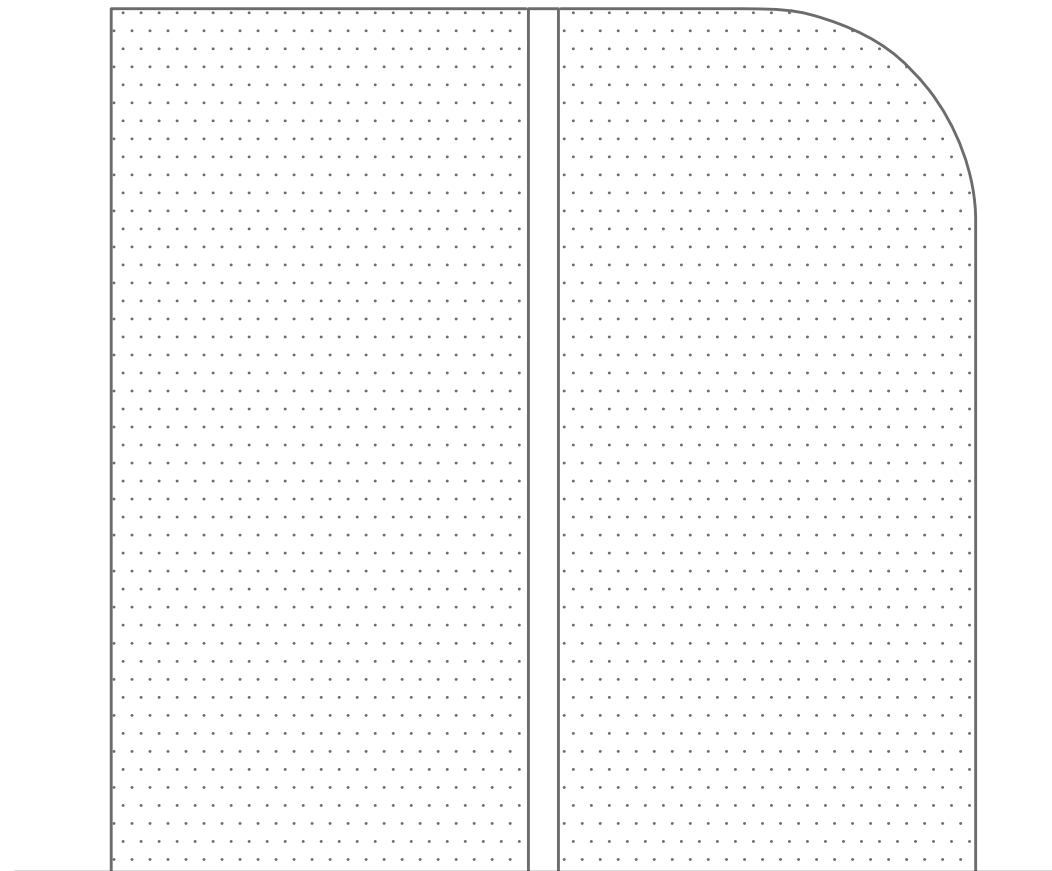
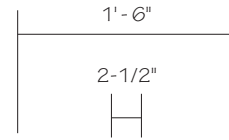
1. Externally illuminated signs must be shielded from adjacent buildings and streets, and cannot cause glare or other nuisances to adjacent land uses or traffic. Projecting light fixtures used for externally illuminated signs must not obscure the sign.

Proposed Standard Design - Directional Detached Sign Standard



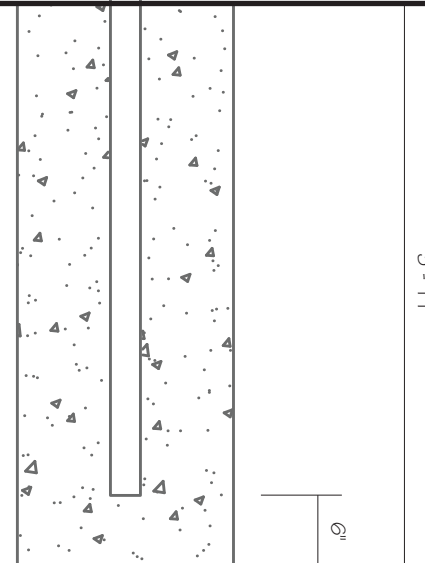
Top View Mounting Detail

Scale: 3/4" = 1'-0"



Mounting Details

Scale: 3/4" = 1'-0"



Covenant Health West

Date: 3/29/23

Revised: _____

Designer: CTP

Directional Monument

File Name: Sign

C:\Covenant Health\Covenant Health West\Survey Documents\Drawings

Project Manager: TS

Directional Sign Non-Illuminated

Monument Sign



1301 Antioch Pike, Nashville, TN 37211
p. 615-885-2900 | f. 615-885-2989

This design is being submitted for use as a product being manufactured for you by Signcraft, Inc. It is not to be reproduced, copied or manufactured by you or given to any other manufacturer without written permission from Signcraft, Inc. Unauthorized use is subject to design charge and will include any collection fees.



Proposed Signage - Front - Sample

Scale: 1/2" = 1'-0"

Total = Not to exceed 5% of Primary Elevation.

Proposed Standard Design for Property

Building Attached Sign – Sign Standards

- Building signs must be individual letters
 - Letters must be a minimum of 3/8" thick
 - Letters and Logo icons have no color restrictions
 - Letters must be flush mounted to the building
- Building signs may not exceed 5% of the wall area of the primary building elevation
- Letters and Logo may not be internally illuminated.
- Letters and Logo may be externally illuminated.
 - External light sources must not be visible from the public right of way or adjacent properties
 - Per OP zone ordinance – internal illumination is only allowed if the healthcare facility has an emergency room. Signs may have internal illumination only if the building has an emergency room.
- Building signs must be attached to building per engineered drawing.

Covenant Health West

Date: 3/29/23

Revised: _____

Designer: CTP

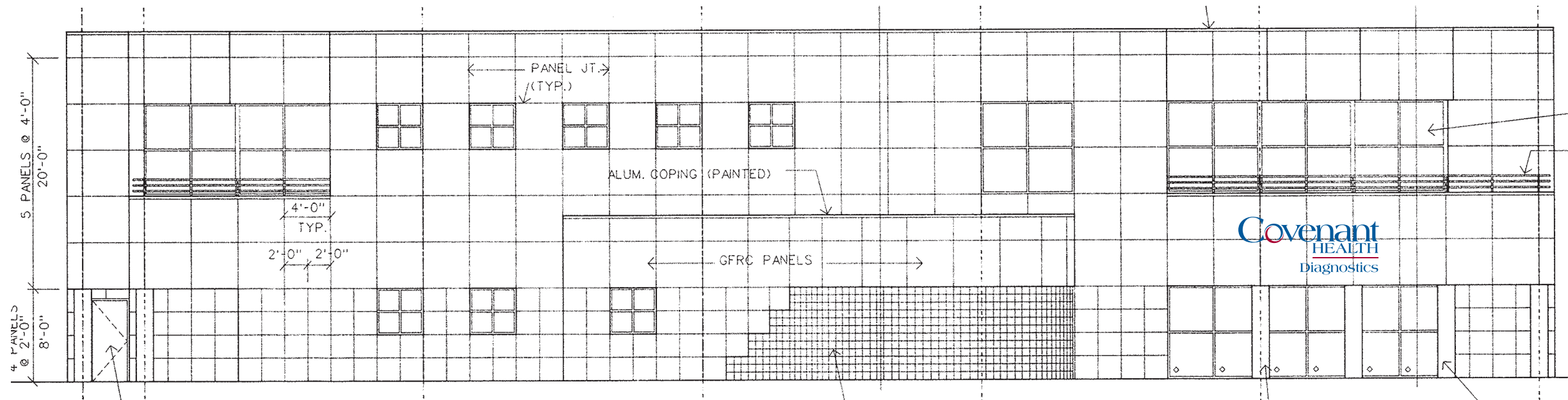
File Name: Building Sign

C:\Covenant Health\Covenant Health West\Survey Documents\Drawings

Project Manager: TS

Building ID

Wall Mounted



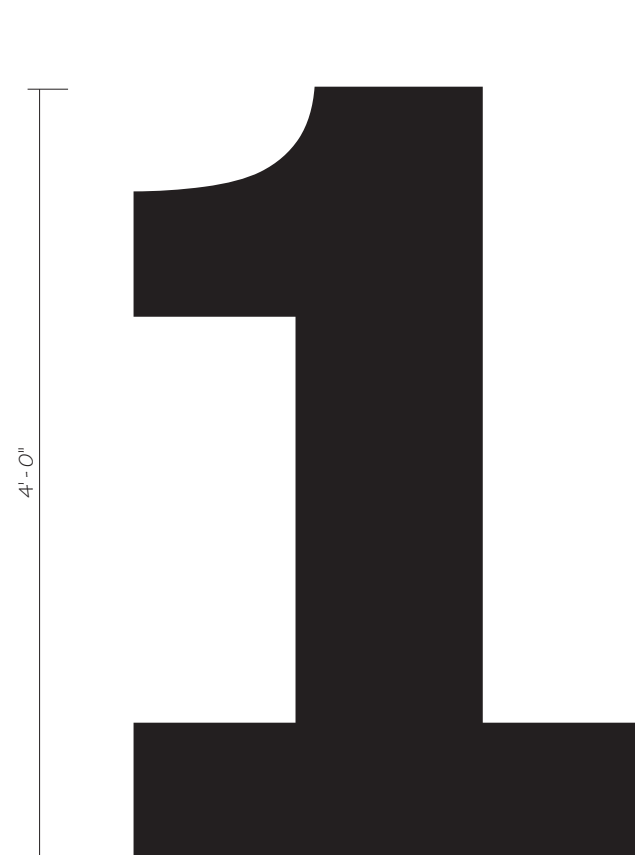
Proposed Signage - Front - Sample

Scale: 3/32" = 1'-0"



1301 Antioch Pike, Nashville, TN 37211
p. 615-885-2900 | f. 615-885-2989

This design is being submitted for use as a product being manufactured for you by Signcraft, Inc. It is not to be reproduced, copied or manufactured by you or given to any other manufacturer without written permission from Signcraft, Inc. Unauthorized use is subject to design charge and will include any collection fees.



Front View

Scale: 1" = 1'-0"



Side View

Scale: 1" = 1'-0"

Proposed Standard Design for Property

Building ID – Wall Mounted Sign Standards

Aluminum Fabricated Numbers

- Heavy Gauge fabricated Numbers: .090 Face / .063 Return
- Painted Matthews Paint Black.
- Font: Tahoma Bold
- Welded stud mounts painted Matthews Paint Black.
- 4" Stand off from finished wall.
- Any penetrations to wall to be filled with Exterior Grade Silicone.

Covenant Health West

Date: 3/29/23

Revised: _____

Designer: CTP

File Name: Wall Mounted Building ID

C:\Covenant Health\Covenant Health West\Survey Documents\Drawings

Project Manager: TS

Building Sign Non-Illuminated

Fabricated Letter - Wall Mounted



1301 Antioch Pike, Nashville, TN 37211
p. 615-885-2900 | f. 615-885-2989

This design is being submitted for use as a product being manufactured for you by Signcraft, Inc. It is not to be reproduced, copied or manufactured by you or given to any other manufacturer without written permission from Signcraft, Inc. Unauthorized use is subject to design charge and will include any collection fees.



Side A



Side B

Existing Signage

Scale: Not to Scale

Location: 1 - Campus Monument

Existing Details:

9' - 0" +/- Wide x 22' - 4" +/- Tall.
Custom Fiberglass Cabinet

1' - 0" Tall Text (E). Channel Letters/Logo.

Notes:

Sign to be Removed and Replaced with new Development Directory sign per Master Sign Plan.

Covenant Health West

Date: 3/29/23

Revised: _____

Designer: CTP

File Name: Loc 1 - Campus.ai

F:\CUSTOMERS\C\Covenant Health\Covenant Health West\Layouts

Project Manager: TS

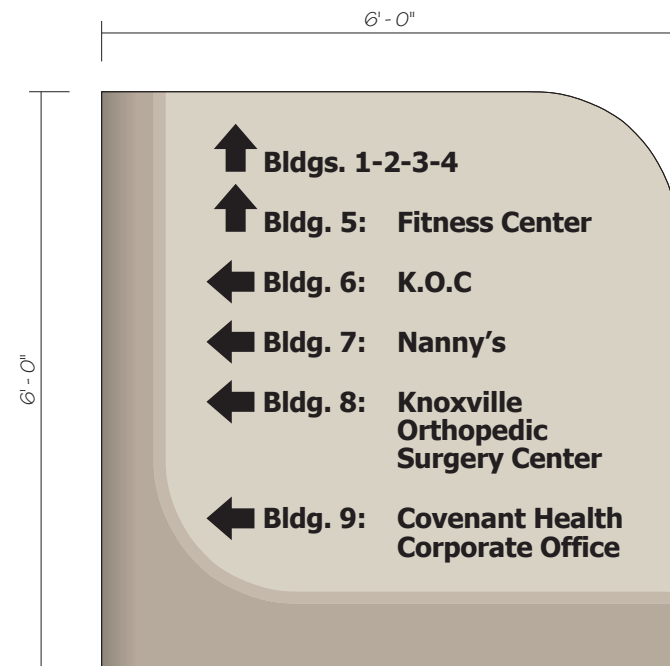
**Monument Sign
Non-Illuminated**

Main Campus Monument Sign
Location 1



1301 Antioch Pike, Nashville, TN 37211
p. 615-885-2900 | f. 615-885-2989

This design is being submitted for use as a product being manufactured for you by Signcraft, Inc. It is not to be reproduced, copied or manufactured by you or given to any other manufacturer without written permission from Signcraft, Inc. Unauthorized use is subject to design charge and will include any collection fees.



Proposed Signage - Front

Scale: 1/2" = 1'-0"

Side A



Side B

Location: 2 - Directional Sign - Non-Illuminated

Details

Refurbish and Reface Sign to match color scheme in Proposed Master Sign Plan.

- 1) Existing Sign cabinet to be cleaned and painted Dark Khaki – PMS 7529C.
- 2) New .040 Aluminum Sign Face painted Light Khaki – PMS 7527C and Accent Line to match Medium Khaki – PMS 7528c. Vinyl graphics & Arrows: Matte black vinyl. Font: Tahoma Bold

Covenant Health West

Date: 3/29/23

Revised: _____

Designer: CTP

File Name: Loc 2 - Campus.ai

C:\Covenant Health\Covenant Health West\Layouts\Campus

Project Manager: TS

Directional Sign Non-Illuminated

Monument Sign
Location 2



1301 Antioch Pike, Nashville, TN 37211
p. 615-885-2900 | f. 615-885-2989



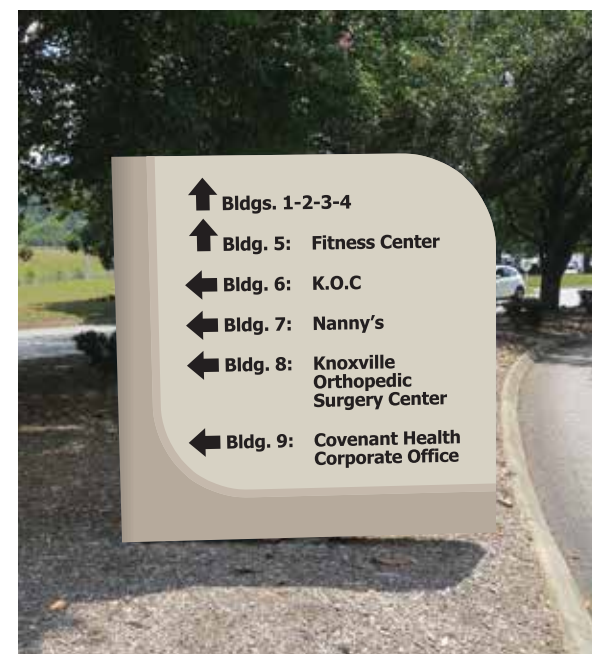
Existing Signage

Scale: Not to Scale

Side A



Side B



Graphic Rendering

Scale: Not to Scale

Side A



Side B

This design is being submitted for use as a product being manufactured for you by Signcraft, Inc. It is not to be reproduced, copied or manufactured by you or given to any other manufacturer without written permission from Signcraft, Inc. Unauthorized use is subject to design charge and will include any collection fees.

Location: 3 - Directional Sign - Non-Illuminated

Recommendations

Remove and dispose of existing sign.

Covenant Health West

Date: 3/29/23

Revised: _____

Designer: CTP

File Name: Loc 3 - Campus.ai

F:\CUSTOMERS\C\Covenant Health\Covenant Health West\Layouts

Project Manager: TS

Directional Sign Non-Illuminated

Monument Sign
Location 3



1301 Antioch Pike, Nashville, TN 37211
p. 615-885-2900 | f. 615-885-2989

This design is being submitted for use as a product being manufactured for you by Signcraft, Inc. It is not to be reproduced, copied or manufactured by you or given to any other manufacturer without written permission from Signcraft, Inc. Unauthorized use is subject to design charge and will include any collection fees.



Existing Signage

Scale: Not to Scale

Side A

Side B



Existing Signage

Scale: Not to Scale

Side A

Location: 4 - Large Monument

Recommendations

Remove and dispose of existing sign.

Covenant Health West

Date: 3/29/23

Revised: _____

Designer: CTP

File Name: Loc 4 - Campus.ai

F:\CUSTOMERS\C\Covenant Health\Covenant Health West\Layouts

Project Manager: TS

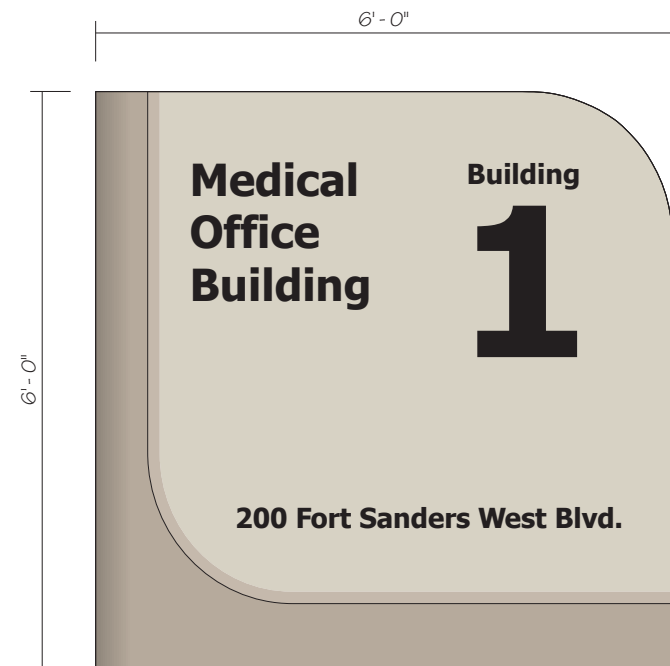
**Directional Sign
Non-Illuminated**

Monument Sign
Location 4



1301 Antioch Pike, Nashville, TN 37211
p. 615-885-2900 | f. 615-885-2989

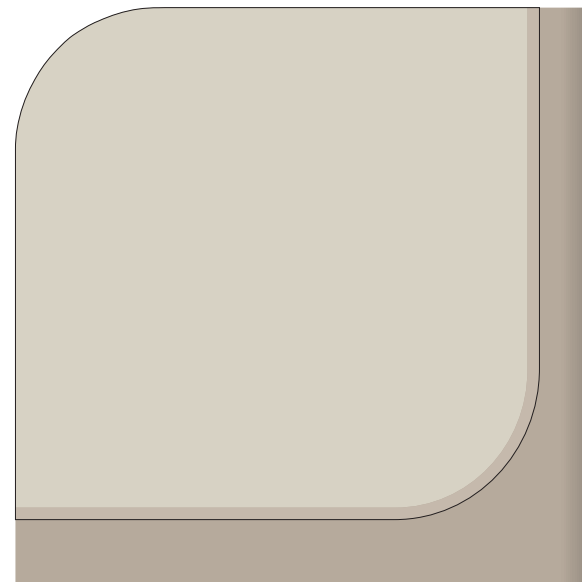
This design is being submitted for use as a product being manufactured for you by Signcraft, Inc. It is not to be reproduced, copied or manufactured by you or given to any other manufacturer without written permission from Signcraft, Inc. Unauthorized use is subject to design charge and will include any collection fees.



Proposed Signage

Scale: 1/2" = 1'-0"

Side A



Side B

Location: 5 - Building Monument Sign

Details

Refurbish and Reface Sign to match color scheme in Proposed Master Sign Plan.

- 1) Existing Sign cabinet to be cleaned and painted Dark Khaki – PMS 7529C.
- 2) New .040 Aluminum Sign Face painted Light Khaki – PMS 7527C and Accent Line to match Medium Khaki – PMS 7528c. Vinyl graphics & Arrows: Matte black vinyl. Font: Tahoma Bold

Covenant Health West

Date: 3/29/23

Revised: _____

Designer: CTP

File Name: Loc 5 - Campus.ai

C:\Covenant Health\Covenant Health West\Layouts\Campus

Project Manager: TS

Building Sign Non-Illuminated

Monument Sign
Location 5



1301 Antioch Pike, Nashville, TN 37211
p. 615-885-2900 | f. 615-885-2989



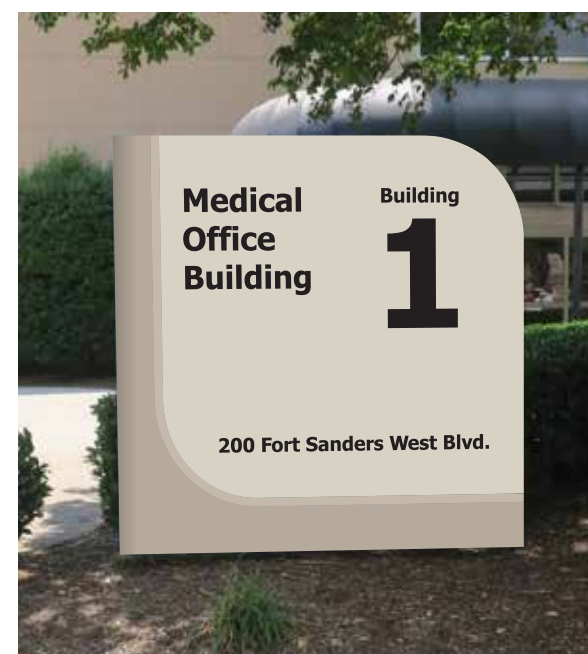
Existing Signage

Scale: Not to Scale

Side A



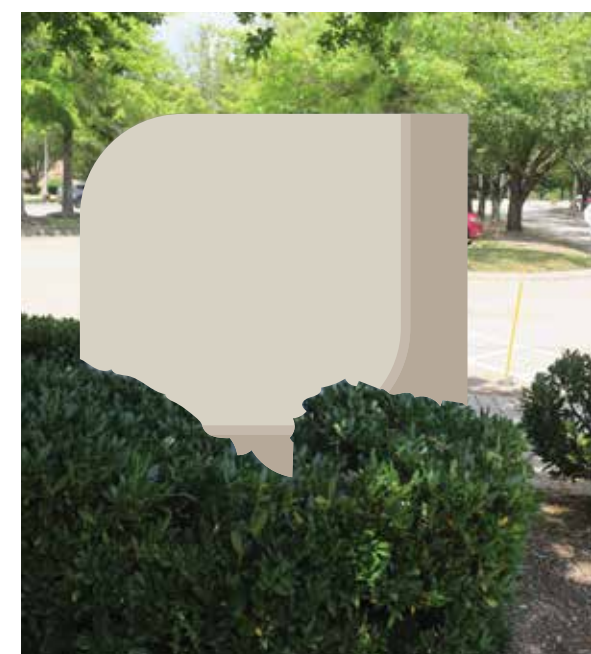
Side B



Graphic Rendering

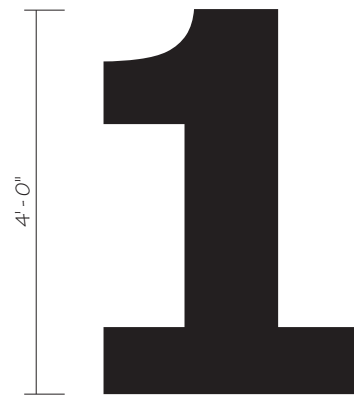
Scale: Not to Scale

Side A



Side B

This design is being submitted for use as a product being manufactured for you by Signcraft, Inc. It is not to be reproduced, copied or manufactured by you or given to any other manufacturer without written permission from Signcraft, Inc. Unauthorized use is subject to design charge and will include any collection fees.



Proposed Signage

Scale: 1/2" = 1'-0"

Location: 6 - Wall Mounted Building ID - Number

Existing Details:

Wall Mounted Non-Illuminated, Fabricated Aluminum Logo and Building Number.

Recommendation:

Remove and Dispose of existing logo and number.
New Non-Illuminated, Fabricated Number to be installed.
Refer to Shop Drawing Wall Mounted Building ID.

Font: Tahoma Bold



Existing Signage

Scale: Not to Scale



Graphic Rendering

Scale: Not to Scale

Covenant Health West

Date: 3/29/23

Revised: _____

Designer: CTP

File Name: Loc 6 - Campus.ai

C:\Covenant Health\Covenant Health West\Layouts\Campus

Project Manager: TS

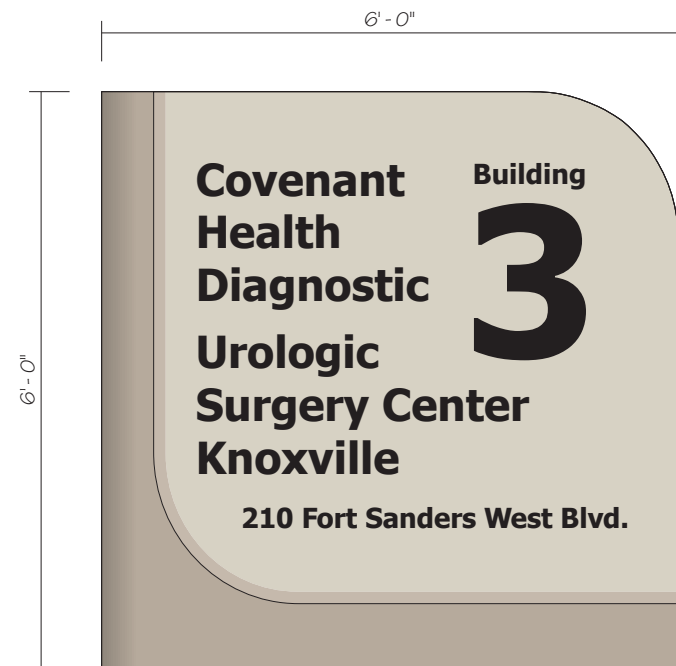
**Building Sign
Non-Illuminated**

Building ID - Wall Mounted
Location 6



1301 Antioch Pike, Nashville, TN 37211
p. 615-885-2900 | f. 615-885-2989

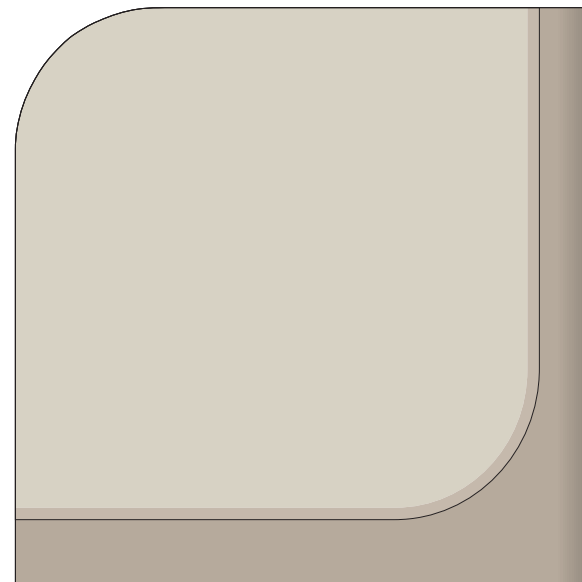
This design is being submitted for use as a product being manufactured for you by Signcraft, Inc. It is not to be reproduced, copied or manufactured by you or given to any other manufacturer without written permission from Signcraft, Inc. Unauthorized use is subject to design charge and will include any collection fees.



Proposed Signage

Side A

Scale: 1/2" = 1'-0"



Side B

Location: 7 - Building Monument Sign

Details

Refurbish and Reface Sign to match color scheme in Proposed Master Sign Plan.

- 1) Existing Sign cabinet to be cleaned and painted Dark Khaki – PMS 7529C.
- 2) New .040 Aluminum Sign Face painted Light Khaki – PMS 7527C and Accent Line to match Medium Khaki – PMS 7528c. Vinyl graphics & Arrows: Matte black vinyl. Font: Tahoma Bold

Covenant Health West

Date: 3/29/23

Revised: _____

Designer: CTP

File Name: Loc 7 - Campus.ai

C:\Covenant Health\Covenant Health West\Layouts\Campus

Project Manager: TS

Building Sign Non-Illuminated

Monument Sign
Location 7



1301 Antioch Pike, Nashville, TN 37211
p. 615-885-2900 | f. 615-885-2989

This design is being submitted for use as a product being manufactured for you by Signcraft, Inc. It is not to be reproduced, copied or manufactured by you or given to any other manufacturer without written permission from Signcraft, Inc. Unauthorized use is subject to design charge and will include any collection fees.



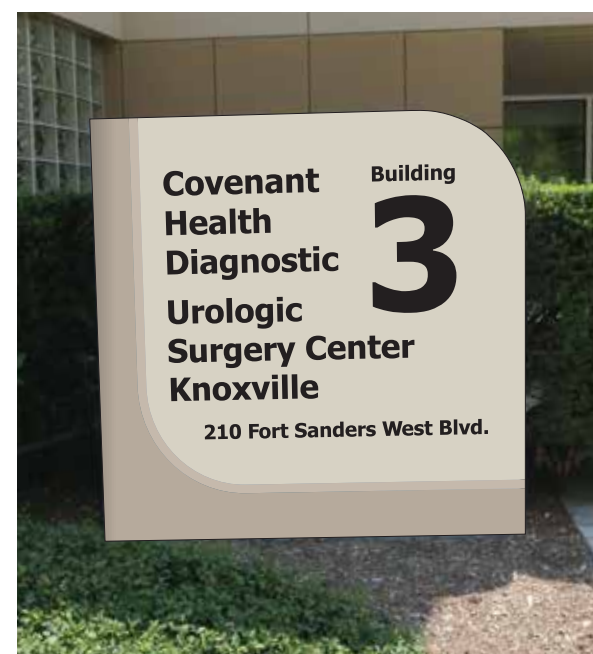
Side A

Existing Signage

Scale: Not to Scale



Side B



Side A

Graphic Rendering

Scale: Not to Scale



Side B



Proposed Signage - Front

Scale: 1/2" = 1'-0"

Location: 8 - Building Sign

3/8" thick Flat Cut Aluminum Logo. Painted PMS 294c (Blue) and PMS 201c (Red).

Mechanically Fastened to wall using Studs and Silicone.
Non-Corrosive Hardware.

Existing Sign to Remain as shown.
No change required.



Existing Signage

Scale: Not to Scale

Covenant Health West

Date: 3/29/23

Revised: _____

Designer: CTP

File Name: Loc 8 - Campus.ai

C:\Covenant Health\Covenant Health West\Layouts\Campus

Project Manager: TS

**Building Sign
Non-Illuminated**

Building ID - Wall Mounted
Location 8



1301 Antioch Pike, Nashville, TN 37211
p. 615-885-2900 | f. 615-885-2989

This design is being submitted for use as a product being manufactured for you by Signcraft, Inc. It is not to be reproduced, copied or manufactured by you or given to any other manufacturer without written permission from Signcraft, Inc. Unauthorized use is subject to design charge and will include any collection fees.



Proposed Signage

Scale: 1/2" = 1'-0"

Location: 9 - Wall Mounted Building ID - Number

Existing Details:

Wall Mounted Non-Illuminated, Fabricated Aluminum Logo and Building Number.

Recommendation:

Remove and Dispose of existing logo and number.
New Non-Illuminated, Fabricated Number to be installed.
Refer to Shop Drawing Wall Mounted Building ID.

Font: Tahoma Bold



Existing Signage

Scale: Not to Scale



Graphic Rendering

Scale: Not to Scale

Covenant Health West

Date: 3/29/23

Revised: _____

Designer: CTP

File Name: Loc 9 - Campus.ai

C:\Covenant Health\Covenant Health West\Layouts\Campus

Project Manager: TS

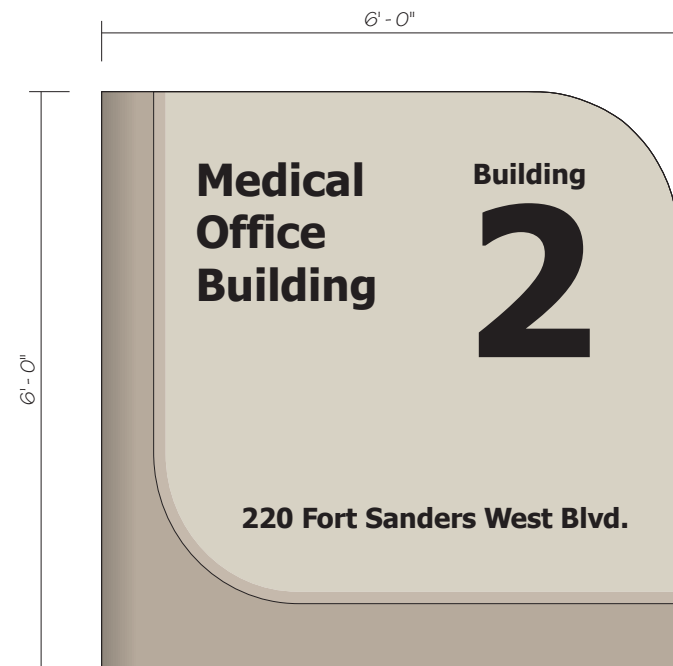
**Building Sign
Non-Illuminated**

Building ID - Wall Mounted
Location 9



1301 Antioch Pike, Nashville, TN 37211
p. 615-885-2900 | f. 615-885-2989

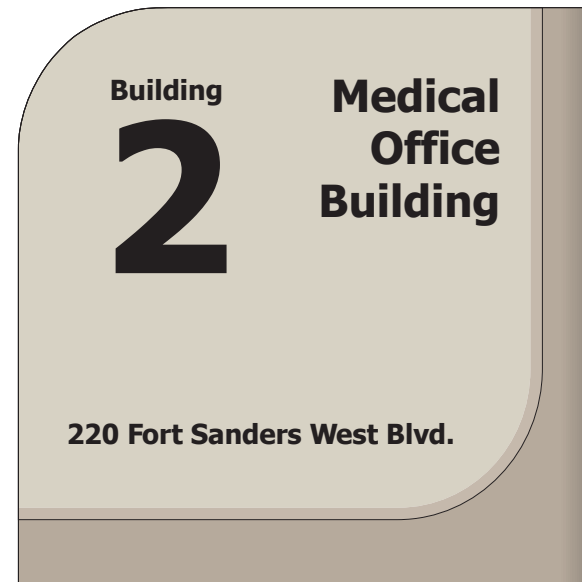
This design is being submitted for use as a product being manufactured for you by Signcraft, Inc. It is not to be reproduced, copied or manufactured by you or given to any other manufacturer without written permission from Signcraft, Inc. Unauthorized use is subject to design charge and will include any collection fees.



Proposed Signage

Scale: 1/2" = 1'-0"

Side A



Side B

Location: 12 - Building Monument Sign

Details

Refurbish and Reface Sign to match color scheme in Proposed Master Sign Plan.

- 1) Existing Sign cabinet to be cleaned and painted Dark Khaki – PMS 7529C.
- 2) New .040 Aluminum Sign Face painted Light Khaki – PMS 7527C and Accent Line to match Medium Khaki – PMS 7528c. Vinyl graphics & Arrows: Matte black vinyl. Font: Tahoma Bold

Covenant Health West

Date: 3/29/23

Revised: _____

Designer: CTP

File Name: Loc 12 - Campus.ai

C:\Covenant Health\Covenant Health West\Layouts\Campus

Project Manager: TS

Building Sign Non-Illuminated

Monument Sign
Location 12



1301 Antioch Pike, Nashville, TN 37211
p. 615-885-2900 | f. 615-885-2989



Existing Signage

Scale: Not to Scale

Side A



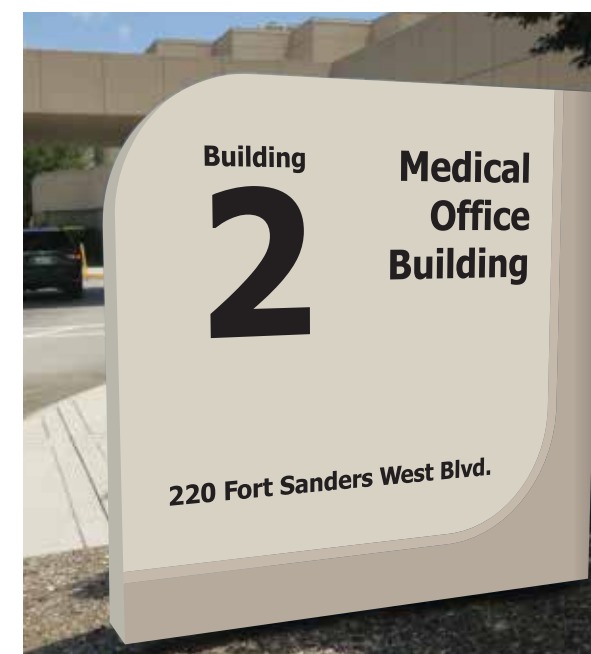
Side B



Graphic Rendering

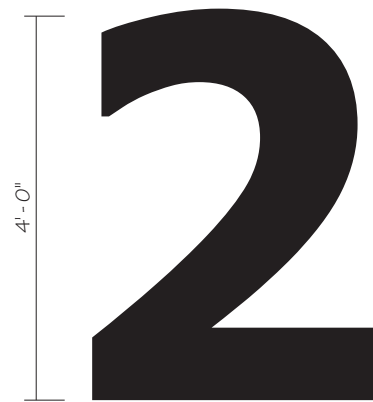
Scale: Not to Scale

Side A



Side B

This design is being submitted for use as a product being manufactured for you by Signcraft, Inc. It is not to be reproduced, copied or manufactured by you or given to any other manufacturer without written permission from Signcraft, Inc. Unauthorized use is subject to design charge and will include any collection fees.



Proposed Signage

Scale: 1/2" = 1'-0"

Location: 13 - Wall Mounted Building ID - Number

Existing Details:

Wall Mounted Non-Illuminated, Fabricated Aluminum Logo and Building Number.

Recommendation:

Remove and Dispose of existing logo and number.
New Non-Illuminated, Fabricated Number to be installed.
Refer to Shop Drawing Wall Mounted Building ID.

Font: Tahoma Bold



Existing Signage

Scale: Not to Scale



Graphic Rendering

Scale: Not to Scale

Covenant Health West

Date: 3/29/23

Revised: _____

Designer: CTP

File Name: Loc 13 - Campus.ai

C:\Covenant Health\Covenant Health West\Layouts\Campus

Project Manager: TS

**Building Sign
Non-Illuminated**

Building ID - Wall Mounted
Location 13



1301 Antioch Pike, Nashville, TN 37211
p. 615-885-2900 | f. 615-885-2989

This design is being submitted for use as a product being manufactured for you by Signcraft, Inc. It is not to be reproduced, copied or manufactured by you or given to any other manufacturer without written permission from Signcraft, Inc. Unauthorized use is subject to design charge and will include any collection fees.



Existing Signage

Scale: Not to Scale

Side A

Location: 14 - Building Monument Sign

Existing Sign to Remain as shown.
No change required.

**Covenant Health
West**

Date: 3/29/23

Revised: _____

Designer: CTP

File Name: Loc 14 - Campus.ai

C:\Covenant Health\Covenant Health
West\Layouts\Campus

Project Manager: TS

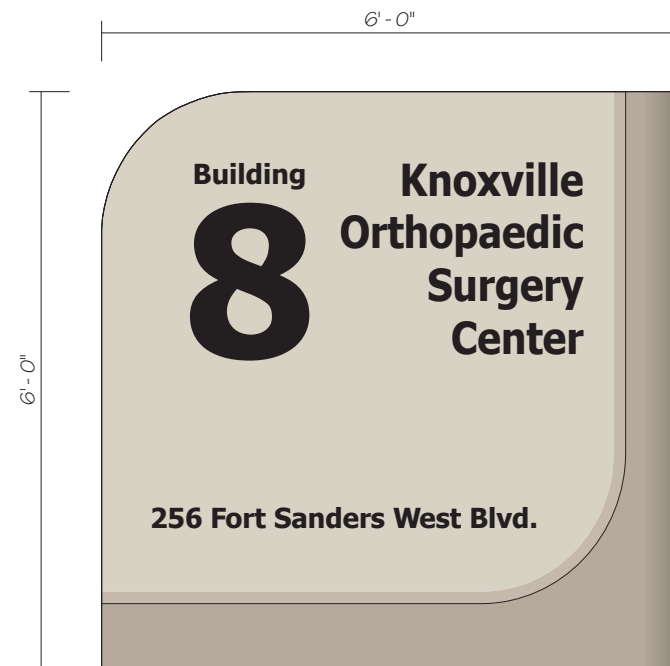
**Building Sign
Non-Illuminated**

Monument Sign
Location 14



1301 Antioch Pike, Nashville, TN 37211
p. 615-885-2900 | f. 615-885-2989

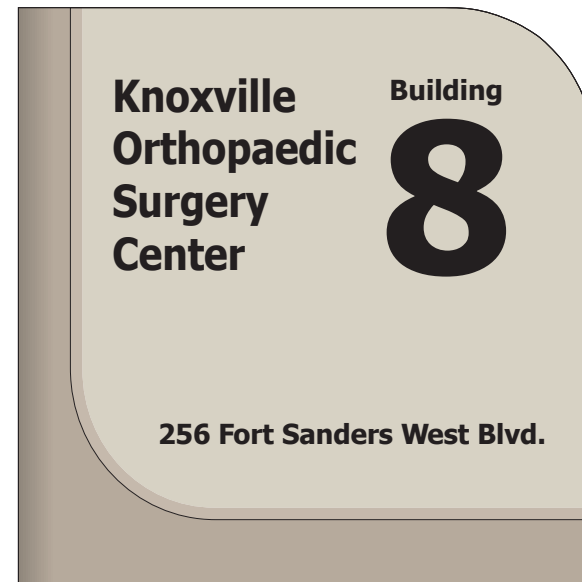
This design is being submitted for use as a product being manufactured for you by Signcraft, Inc. It is not to be reproduced, copied or manufactured by you or given to any other manufacturer without written permission from Signcraft, Inc. Unauthorized use is subject to design charge and will include any collection fees.



Proposed Signage

Scale: 1/2" = 1'-0"

Side A



Side B

Location: 15 - Building Monument Sign

Details

Refurbish and Reface Sign to match color scheme in Proposed Master Sign Plan.

- 1) Existing Sign cabinet to be cleaned and painted Dark Khaki – PMS 7529C.
- 2) New .040 Aluminum Sign Face painted Light Khaki – PMS 7527C and Accent Line to match Medium Khaki – PMS 7528c. Vinyl graphics & Arrows: Matte black vinyl. Font: Tahoma Bold

Covenant Health West

Date: 3/29/23

Revised: _____

Designer: CTP

File Name: Loc 15 - Campus.ai

C:\Covenant Health\Covenant Health West\Layouts\Campus

Project Manager: TS

Building Sign Non-Illuminated

Monument Sign
Location 15



1301 Antioch Pike, Nashville, TN 37211
p. 615-885-2900 | f. 615-885-2989

This design is being submitted for use as a product being manufactured for you by Signcraft, Inc. It is not to be reproduced, copied or manufactured by you or given to any other manufacturer without written permission from Signcraft, Inc. Unauthorized use is subject to design charge and will include any collection fees.



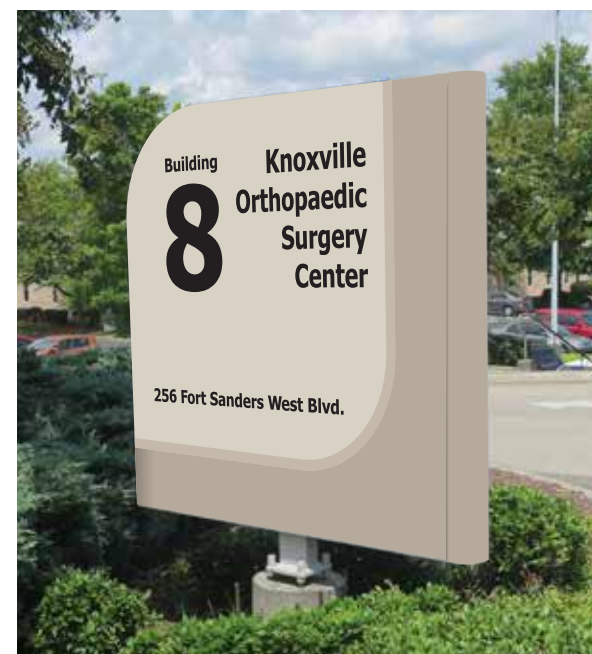
Existing Signage

Scale: Not to Scale

Side A



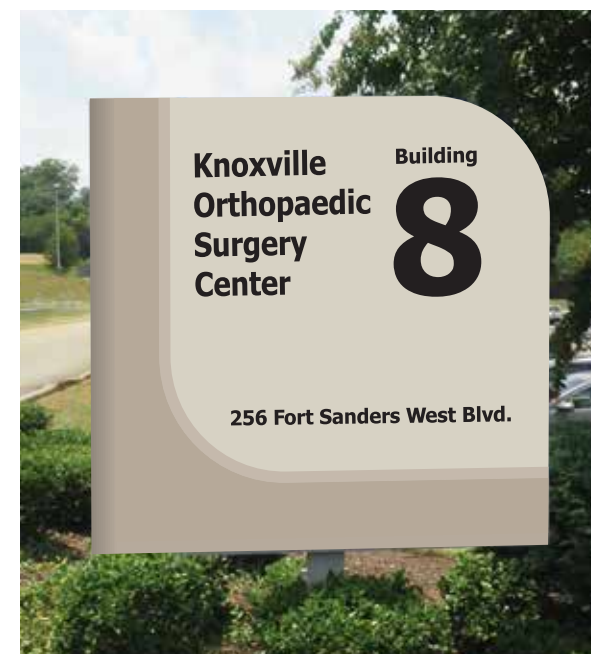
Side B



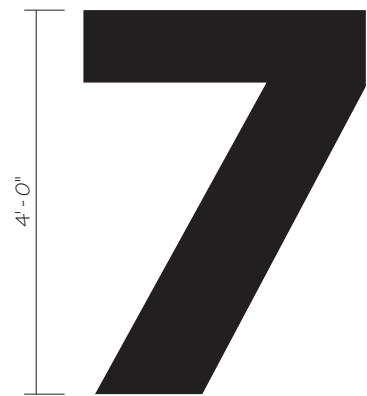
Graphic Rendering

Scale: Not to Scale

Side A



Side B



Proposed Signage

Scale: 1/2" = 1'-0"

Location: 16 - Wall Mounted Building ID - Number

Existing Details:

Wall Mounted Non-Illuminated, Fabricated Aluminum Logo and Building Number.

Recommendation:

Remove and Dispose of existing logo and number.
New Non-Illuminated, Fabricated Number to be installed.
Refer to Shop Drawing Wall Mounted Building ID.

Font: Tahoma Bold



Existing Signage

Scale: Not to Scale



Graphic Rendering

Scale: Not to Scale

Covenant Health West

Date: 3/29/23

Revised: _____

Designer: CTP

File Name: Loc 16 - Campus.ai

C:\Covenant Health\Covenant Health West\Layouts\Campus

Project Manager: TS

Building Sign Non-Illuminated

Building ID - Wall Mounted
Location 16



1301 Antioch Pike, Nashville, TN 37211
p. 615-885-2900 | f. 615-885-2989

This design is being submitted for use as a product being manufactured for you by Signcraft, Inc. It is not to be reproduced, copied or manufactured by you or given to any other manufacturer without written permission from Signcraft, Inc. Unauthorized use is subject to design charge and will include any collection fees.



Side A



Side B

Proposed Signage - Front

Scale: 1" = 1'-0"

Location: 17 - Post and Panel

Existing Details:

Fabricated Aluminum Cabinet sign with custom post.
Sign Face Size: 26" wide x 33" tall
Mechanically Fastened. Mounted in ground.

Recommendation:

Existing Post to be cleaned and repainted to match:
Dark Khaki - PMS 7529c.

Existing Cabinet to be cleaned and repainted to match:
Light Khaki - PMS 7527c

New .080" Aluminum sign face for both sides painted to match:
Light Khaki - PMS 7527c.
Black - Vinyl and Graphics

Font: Tahoma Bold

Covenant Health West

Date: 3/29/23

Revised: 4/10/23

Designer: CTP

File Name: Loc 17 - Campus.ai

C:\Covenant Health\Covenant Health West\Layouts\Campus

Project Manager: TS

Vehicular Directional Non-Illuminated

Post and Panel Sign
Location 17



1301 Antioch Pike, Nashville, TN 37211
p. 615-885-2900 | f. 615-885-2989



Side A



Side B



Graphic Rendering

Scale: Not to Scale

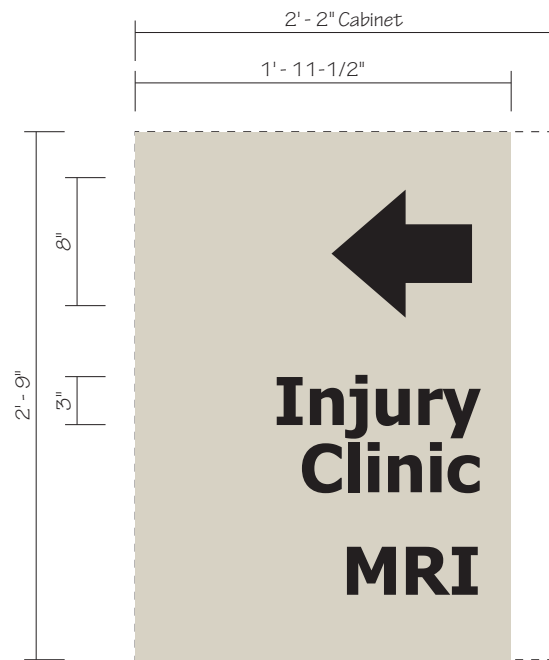


Side B

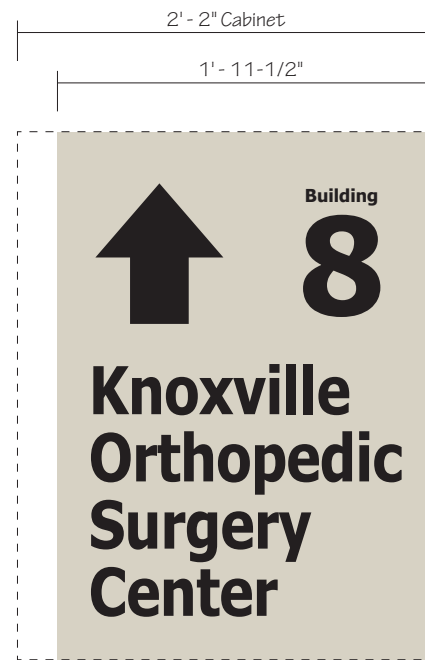
Existing Signage

Scale: Not to Scale

This design is being submitted for use as a product being manufactured for you by Signcraft, Inc. It is not to be reproduced, copied or manufactured by you or given to any other manufacturer without written permission from Signcraft, Inc. Unauthorized use is subject to design charge and will include any collection fees.



Side A



Side B

Proposed Signage - Front

Scale: 1" = 1'-0"

Location: 18 - Post and Panel

Existing Details:

Fabricated Aluminum Cabinet sign with custom post.
Sign Face Size: 26" wide x 33" tall
Mechanically Fastened. Mounted in ground.

Recommendation:

Existing Post to be cleaned and repainted to match:
Dark Khaki - PMS 7529c.

Existing Cabinet to be cleaned and repainted to match:
Light Khaki - PMS 7527c

New .080" Aluminum sign face for both sides painted to match:
Light Khaki - PMS 7527c.
Black - Vinyl and Graphics

Font: Tahoma Bold

Covenant Health West

Date: 3/29/23

Revised: 4/10/23

Designer: CTP

File Name: Loc 18 - Campus.ai

C:\Covenant Health\Covenant Health West\Layouts\Campus

Project Manager: TS

Vehicular Directional Non-Illuminated

Post and Panel Sign
Location 18



1301 Antioch Pike, Nashville, TN 37211
p. 615-885-2900 | f. 615-885-2989



Side A



Side B



Side A



Side B

Existing Signage

Scale: Not to Scale

Graphic Rendering

Scale: Not to Scale

This design is being submitted for use as a product being manufactured for you by Signcraft, Inc. It is not to be reproduced, copied or manufactured by you or given to any other manufacturer without written permission from Signcraft, Inc. Unauthorized use is subject to design charge and will include any collection fees.



Existing Signage

Scale: Not to Scale

Location: 19 - Building Sign

Existing Details:

Fabricated, Non-Illuminated Building Letters.
3" +/- Deep
18" +/- Tall

Existing sign to remain as shown.
No change required.

Covenant Health West

Date: 3/29/23

Revised: _____

Designer: CTP

File Name: Loc 19 - Campus.ai

C:\Covenant Health\Covenant Health West\Layouts\Campus

Project Manager: TS

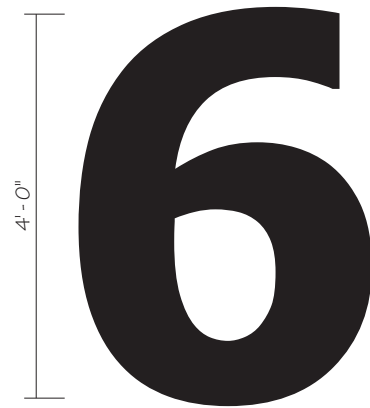
**Building Sign
Non-Illuminated**

Building ID - Wall Mounted
Location 19



1301 Antioch Pike, Nashville, TN 37211
p. 615-885-2900 | f. 615-885-2989

This design is being submitted for use as a product being manufactured for you by Signcraft, Inc. It is not to be reproduced, copied or manufactured by you or given to any other manufacturer without written permission from Signcraft, Inc. Unauthorized use is subject to design charge and will include any collection fees.



Proposed Signage

Scale: 1/2" = 1'-0"

Location: 20 - Wall Mounted Building ID - Number

Existing Details:

Wall Mounted Non-Illuminated, Fabricated Aluminum Logo and Building Number.

Recommendation:

Remove and Dispose of existing logo and number.
New Non-Illuminated, Fabricated Number to be installed.
Refer to Shop Drawing Wall Mounted Building ID.

Font: Tahoma Bold



Existing Signage

Scale: Not to Scale



Graphic Rendering

Scale: Not to Scale

Covenant Health West

Date: 3/29/23

Revised: _____

Designer: CTP

File Name: Loc 20 - Campus.ai

C:\Covenant Health\Covenant Health West\Layouts\Campus

Project Manager: TS

Building Sign Non-Illuminated

Building ID - Wall Mounted
Location 20



1301 Antioch Pike, Nashville, TN 37211
p. 615-885-2900 | f. 615-885-2989

This design is being submitted for use as a product being manufactured for you by Signcraft, Inc. It is not to be reproduced, copied or manufactured by you or given to any other manufacturer without written permission from Signcraft, Inc. Unauthorized use is subject to design charge and will include any collection fees.



Side A



Side B

Existing Signage

Scale: Not to Scale

Covenant Health West

Date: 3/29/23

Revised: _____

Designer: CTP

File Name: Loc 21 - Campus.ai

C:\Covenant Health\Covenant Health West\Layouts\Campus

Project Manager: TS

Building Sign Illuminated

Monument Sign
Location 21



1301 Antioch Pike, Nashville, TN 37211
p. 615-885-2900 | f. 615-885-2989

Location: 21 - Building Sign - Illuminated Monument

Existing Details:

Internally Illuminated.
White Cabinet: 90-1/4" wide x 45-1/2" tall, with Push Through Acrylic Logo elements.

Gray Cabinet: 69" wide x 42" tall x 12-3/4" deep, routed out Text with second surface Translucent white Acrylic.

Concrete Base: 98" x 17"

Existing Sign to Remain as shown.
No change required.

This design is being submitted for use as a product being manufactured for you by Signcraft, Inc. It is not to be reproduced, copied or manufactured by you or given to any other manufacturer without written permission from Signcraft, Inc. Unauthorized use is subject to design charge and will include any collection fees.



Proposed Signage - Front

Scale: 1/2" = 1'-0"

Total Sq Footage: 103.25

Location: 22 - Building ID

Existing Sign to be Removed and Disposed of by others.

New sign - 3/8" thick Flat Cut Aluminum Logo. Painted PMS 294c (Blue) and PMS 201c (Red).
Mechanically Fastened to wall using Studs and Silicone.
Non-Corrosive Hardware.

Refer to Shop Drawing - Building ID for sign details.

Covenant Health West

Date: 3/29/23

Revised: 4/10/23

Designer: CTP

File Name: Loc 22 - Campus.ai

C:\Covenant Health\Covenant Health West\Layouts\Campus

Project Manager: TS

**Building Sign
Non-Illuminated**

Building ID - Wall Mounted
Location 22



1301 Antioch Pike, Nashville, TN 37211
p. 615-885-2900 | f. 615-885-2989



Existing Signage

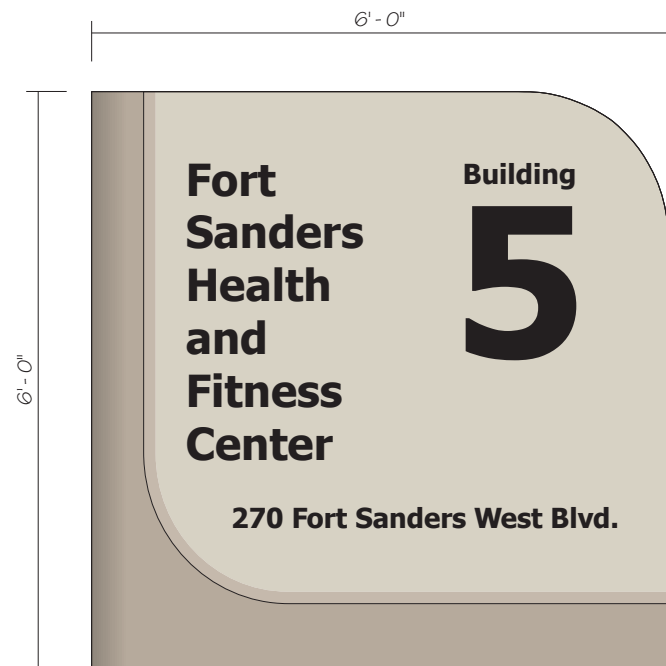
Scale: Not to Scale



Graphic Rendering

Scale: Not to Scale

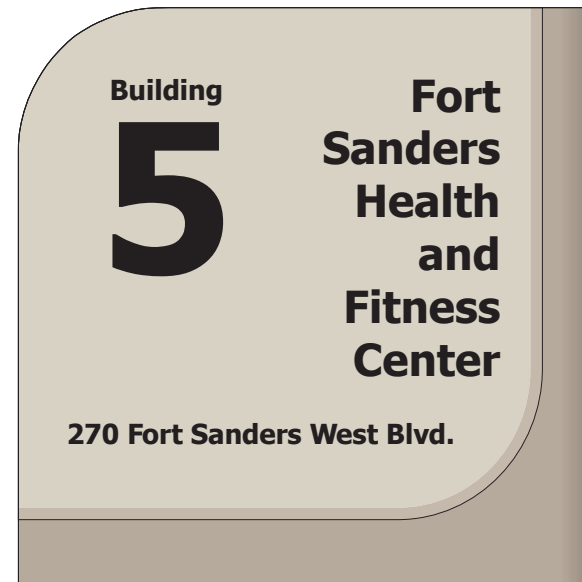
This design is being submitted for use as a product being manufactured for you by Signcraft, Inc. It is not to be reproduced, copied or manufactured by you or given to any other manufacturer without written permission from Signcraft, Inc. Unauthorized use is subject to design charge and will include any collection fees.



Proposed Signage

Scale: 1/2" = 1'-0"

Side A



Side B

Location: 23 - Building Monument Sign

Details

Refurbish and Reface Sign to match color scheme in Proposed Master Sign Plan.

- 1) Existing Sign cabinet to be cleaned and painted Dark Khaki – PMS 7529C.
- 2) New .040 Aluminum Sign Face painted Light Khaki – PMS 7527C and Accent Line to match Medium Khaki – PMS 7528c. Vinyl graphics & Arrows: Matte black vinyl. Font: Tahoma Bold

Covenant Health West

Date: 3/29/23

Revised: _____

Designer: CTP

File Name: Loc 23 - Campus.ai

C:\Covenant Health\Covenant Health West\Layouts\Campus

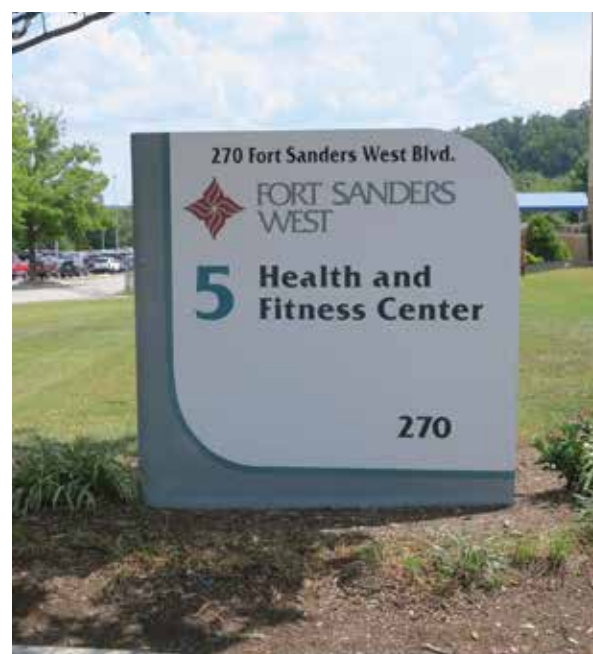
Project Manager: TS

Building Sign Non-Illuminated

Monument Sign
Location 23



1301 Antioch Pike, Nashville, TN 37211
p. 615-885-2900 | f. 615-885-2989



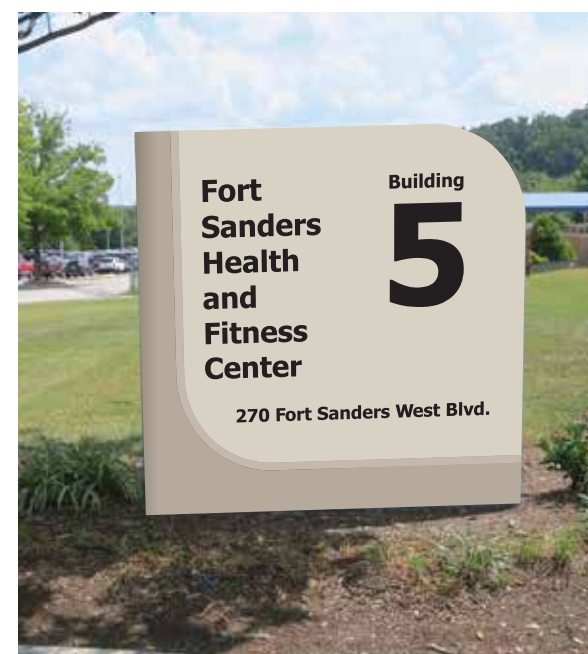
Existing Signage

Scale: Not to Scale

Side A



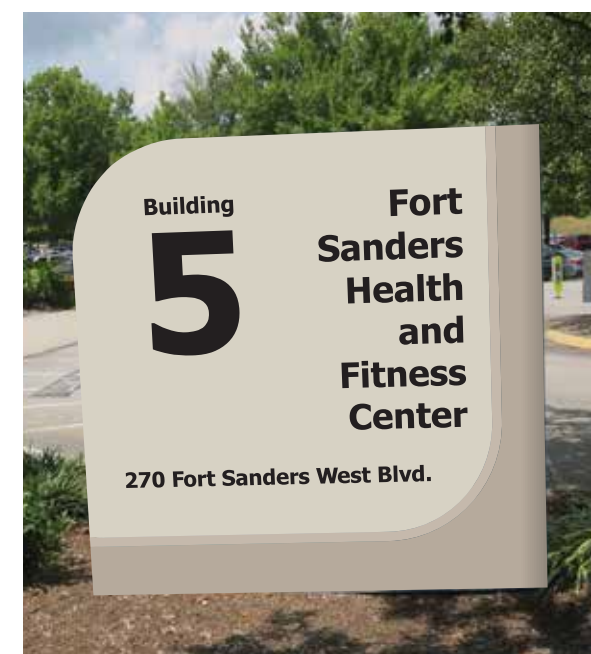
Side B



Graphic Rendering

Scale: Not to Scale

Side A



Side B

This design is being submitted for use as a product being manufactured for you by Signcraft, Inc. It is not to be reproduced, copied or manufactured by you or given to any other manufacturer without written permission from Signcraft, Inc. Unauthorized use is subject to design charge and will include any collection fees.



Proposed Signage

Scale: 1/2" = 1'-0"

Location: 24 - Wall Mounted Building ID - Number

Existing Details:

Wall Mounted Non-Illuminated, Fabricated Aluminum Logo and Building Number.

Recommendation:

Remove and Dispose of existing logo and number.
New Non-Illuminated, Fabricated Number to be installed.
Refer to Shop Drawing Wall Mounted Building ID.

Font: Tahoma Bold



Existing Signage

Scale: Not to Scale



Graphic Rendering

Scale: Not to Scale

Covenant Health West

Date: 3/29/23

Revised: _____

Designer: CTP

File Name: Loc 24 - Campus.ai

C:\Covenant Health\Covenant Health West\Layouts\Campus

Project Manager: TS

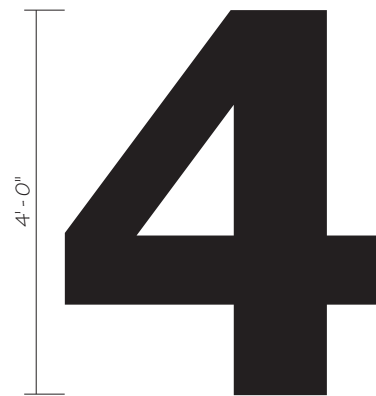
**Building Sign
Non-Illuminated**

Building ID - Wall Mounted
Location 24



1301 Antioch Pike, Nashville, TN 37211
p. 615-885-2900 | f. 615-885-2989

This design is being submitted for use as a product being manufactured for you by Signcraft, Inc. It is not to be reproduced, copied or manufactured by you or given to any other manufacturer without written permission from Signcraft, Inc. Unauthorized use is subject to design charge and will include any collection fees.



Proposed Signage

Scale: 1/2" = 1'-0"

Location: 25 - Wall Mounted Building ID - Number

Existing Details:

Wall Mounted Non-Illuminated, Fabricated Aluminum Logo and Building Number.

Recommendation:

Remove and Dispose of existing logo and number.
New Non-Illuminated, Fabricated Number to be installed.
Refer to Shop Drawing Wall Mounted Building ID.

Font: Tahoma Bold



Existing Signage

Scale: Not to Scale



Graphic Rendering

Scale: Not to Scale

Covenant Health West

Date: 3/29/23

Revised: _____

Designer: CTP

File Name: Loc 25 - Campus.ai

C:\Covenant Health\Covenant Health West\Layouts\Campus

Project Manager: TS

**Building Sign
Non-Illuminated**

Building ID - Wall Mounted
Location 25



1301 Antioch Pike, Nashville, TN 37211
p. 615-885-2900 | f. 615-885-2989

This design is being submitted for use as a product being manufactured for you by Signcraft, Inc. It is not to be reproduced, copied or manufactured by you or given to any other manufacturer without written permission from Signcraft, Inc. Unauthorized use is subject to design charge and will include any collection fees.



Existing Signage

Scale: Not to Scale

**Commercial Building # 4
280 Fort Sanders West Blvd.
Suite #117**

Location: 26 - Tenant Building Sign

Existing Details:

Fabricated, Illuminated Cabinet Sign
Size: 2' Tall x 12' Wide

Existing sign to remain as shown.
No change required.

**Covenant Health
West**

Date: 3/29/23

Revised: _____

Designer: CTP

File Name: Loc 26 - Campus.ai

F:\CUSTOMERS\C\Covenant
Health\Covenant Health West\Layouts

Project Manager: TS

**Building Sign
Illuminated**

Cabinet Tenant Sign
Location 26



1301 Antioch Pike, Nashville, TN 37211
p. 615-885-2900 | f. 615-885-2989

This design is being submitted for use as a product being manufactured for you by Signcraft, Inc. It is not to be reproduced, copied or manufactured by you or given to any other manufacturer without written permission from Signcraft, Inc. Unauthorized use is subject to design charge and will include any collection fees.



Existing Signage

Scale: Not to Scale

**Commercial Building # 4
280 Fort Sanders West Blvd.
Suite #118**

Location: 27 - Tenant Building Sign

Existing Details:

Fabricated, Illuminated Cabinet Sign
Size: 2' Tall x 8' Wide

Existing sign to remain as shown.
No change required.

**Covenant Health
West**

Date: 3/29/23

Revised: _____

Designer: CTP

File Name: Loc 27 - Campus.ai

F:\CUSTOMERS\C\Covenant
Health\Covenant Health West\Layouts

Project Manager: TS

**Building Sign
Illuminated**

Cabinet Tenant Sign
Location 27



1301 Antioch Pike, Nashville, TN 37211
p. 615-885-2900 | f. 615-885-2989

This design is being submitted for use as a product being manufactured for you by Signcraft, Inc. It is not to be reproduced, copied or manufactured by you or given to any other manufacturer without written permission from Signcraft, Inc. Unauthorized use is subject to design charge and will include any collection fees.



Existing Signage

Scale: Not to Scale

**Commercial Building # 4
280 Fort Sanders West Blvd.
Suite #122**

Location: 28 - Tenant Building Sign

Existing Details:

Fabricated, Illuminated Cabinet Sign
Size: 2' Tall x 12' Wide

Existing sign to remain as shown.
No change required.

**Covenant Health
West**

Date: 3/29/23

Revised: _____

Designer: CTP

File Name: Loc 28 - Campus.ai

F:\CUSTOMERS\C\Covenant
Health\Covenant Health West\Layouts

Project Manager: TS

**Building Sign
Illuminated**

Cabinet Tenant Sign
Location 28



1301 Antioch Pike, Nashville, TN 37211
p. 615-885-2900 | f. 615-885-2989

This design is being submitted for use as a product being manufactured for you by Signcraft, Inc. It is not to be reproduced, copied or manufactured by you or given to any other manufacturer without written permission from Signcraft, Inc. Unauthorized use is subject to design charge and will include any collection fees.



Existing Signage

Scale: Not to Scale

**Commercial Building # 4
280 Fort Sanders West Blvd.**

Location: 29 - Tenant Building Sign

Existing Details:

Fabricated, Illuminated Cabinet Sign
Size: 2' Tall x 12' Wide

Existing Sign to Remain as shown.
No change required.

**Covenant Health
West**

Date: 3/29/23

Revised: _____

Designer: CTP

File Name: Loc 29 - Campus.ai

F:\CUSTOMERS\C\Covenant Health\Covenant Health West\Layouts

Project Manager: TS

**Building Sign
Illuminated**

Cabinet Tenant Sign
Location 29



1301 Antioch Pike, Nashville, TN 37211
p. 615-885-2900 | f. 615-885-2989

This design is being submitted for use as a product being manufactured for you by Signcraft, Inc. It is not to be reproduced, copied or manufactured by you or given to any other manufacturer without written permission from Signcraft, Inc. Unauthorized use is subject to design charge and will include any collection fees.



Existing Signage

Scale: Not to Scale

**Commercial Building # 4
280 Fort Sanders West Blvd.**

Location: 30 - Tenant Building Sign

Existing Details:

Fabricated, Illuminated Cabinet Sign
Size: 2' Tall x 12' Wide

Existing sign to remain as shown.
No change required.

**Covenant Health
West**

Date: 3/29/23

Revised: _____

Designer: CTP

File Name: Loc 30 - Campus.ai

F:\CUSTOMERS\C\Covenant Health\Covenant Health West\Layouts

Project Manager: TS

**Building Sign
Illuminated**

Cabinet Tenant Sign
Location 30



1301 Antioch Pike, Nashville, TN 37211
p. 615-885-2900 | f. 615-885-2989

This design is being submitted for use as a product being manufactured for you by Signcraft, Inc. It is not to be reproduced, copied or manufactured by you or given to any other manufacturer without written permission from Signcraft, Inc. Unauthorized use is subject to design charge and will include any collection fees.



Existing Signage

Scale: Not to Scale

**Commercial Building # 4
280 Fort Sanders West Blvd.
Suite #112**

Location: 31 - Tenant Building Sign

Existing Details:

Fabricated, Illuminated Cabinet Sign
Size: 2' Tall x 9' Wide

Existing sign to remain as shown.
No change required.

**Covenant Health
West**

Date: 3/29/23

Revised: _____

Designer: CTP

File Name: Loc 31 - Campus.ai

F:\CUSTOMERS\C\Covenant
Health\Covenant Health West\Layouts

Project Manager: TS

**Building Sign
Illuminated**

Cabinet Tenant Sign
Location 31



1301 Antioch Pike, Nashville, TN 37211
p. 615-885-2900 | f. 615-885-2989

This design is being submitted for use as a product being manufactured for you by Signcraft, Inc. It is not to be reproduced, copied or manufactured by you or given to any other manufacturer without written permission from Signcraft, Inc. Unauthorized use is subject to design charge and will include any collection fees.



Existing Signage

Scale: Not to Scale

**Commercial Building # 4
280 Fort Sanders West Blvd.
Suite #112**

Location: 32 - Tenant Building Sign

Existing Details:

Fabricated, Illuminated Cabinet Sign
Size: 2' Tall x 8' Wide

Existing sign to remain as shown.
No change required.

**Covenant Health
West**

Date: 3/29/23

Revised: _____

Designer: CTP

File Name: Loc 32 - Campus.ai

F:\CUSTOMERS\C\Covenant
Health\Covenant Health West\Layouts

Project Manager: TS

**Building Sign
Illuminated**

Cabinet Tenant Sign
Location 32



1301 Antioch Pike, Nashville, TN 37211
p. 615-885-2900 | f. 615-885-2989

This design is being submitted for use as a product being manufactured for you by Signcraft, Inc. It is not to be reproduced, copied or manufactured by you or given to any other manufacturer without written permission from Signcraft, Inc. Unauthorized use is subject to design charge and will include any collection fees.



Existing Signage

Scale: Not to Scale



Patricia Neal Rehabilitation Hospital
Encompass Health
101 Fort Sanders West Blvd.

Location: 33 - Directional Sign - Non-Illuminated

Existing Details:

Fabricated, Illuminated Cabinet Sign

Existing sign to remain as shown.

No change required.

Covenant Health West

Date: 04/26/24

Revised: _____

Designer: CTP

File Name: Loc 33 - Campus.ai

F:\CUSTOMERS\C\Covenant Health\Covenant Health West\Layouts

Project Manager: TS

Directional Sign Non-Illuminated

Location 33



1301 Antioch Pike, Nashville, TN 37211
p. 615-885-2900 | f. 615-885-2989

This design is being submitted for use as a product being manufactured for you by Signcraft, Inc. It is not to be reproduced, copied or manufactured by you or given to any other manufacturer without written permission from Signcraft, Inc. Unauthorized use is subject to design charge and will include any collection fees.



Existing Signage

Scale: Not to Scale

**Patricia Neal Rehabilitation Hospital
Encompass Health
101 Fort Sanders West Blvd.**

Location: 34 - Building Sign - Illuminated

Existing Details:

Fabricated, Illuminated Cabinet Sign

Existing sign to remain as shown.

No change required.

**Covenant Health
West**

Date: 04/26/24

Revised: _____

Designer: CTP

File Name: Loc 34 - Campus.ai

F:\CUSTOMERS\C\Covenant
Health\Covenant Health West\Layouts

Project Manager: TS

**Building Sign
Illuminated**

Location 34



1301 Antioch Pike, Nashville, TN 37211
p. 615-885-2900 | f. 615-885-2989

This design is being submitted for use as a product being manufactured for you by Signcraft, Inc. It is not to be reproduced, copied or manufactured by you or given to any other manufacturer without written permission from Signcraft, Inc. Unauthorized use is subject to design charge and will include any collection fees.



Existing Signage

Scale: Not to Scale

**Patricia Neal Rehabilitation Hospital
Encompass Health
101 Fort Sanders West Blvd.**

Location: 35 - Building Sign - Illuminated

Existing Details:

Fabricated, Illuminated Cabinet Sign

Existing sign to remain as shown.

No change required.

Covenant Health West

Date: 04/26/24

Revised: _____

Designer: CTP

File Name: Loc 35 - Campus.ai

F:\CUSTOMERS\C\Covenant Health\Covenant Health West\Layouts

Project Manager: TS

Building Sign Illuminated

Location 35

 **signcraft** USA
identifying your way

1301 Antioch Pike, Nashville, TN 37211
p. 615-885-2900 | f. 615-885-2989

This design is being submitted for use as a product being manufactured for you by Signcraft, Inc. It is not to be reproduced, copied or manufactured by you or given to any other manufacturer without written permission from Signcraft, Inc. Unauthorized use is subject to design charge and will include any collection fees.