

**UNIT MATRIX:**

(3) SINGLE TREEHOUSES - 1 SLEEPING AREA, 1 BATH - TOTAL OCCUPANTS PER: 2

(2) LUXURY / FAMILY TREEHOUSES - 1 BEDROOM, 1 LOFT SLEEPING AREA, 1 BATH - TOTAL OCCUPANTS PER: 6

(2) ADJACENT OVERNIGHT ACCOMMODATIONS - 2 SLEEPING AREAS, 1 BATH - TOTAL OCCUPANTS PER: 5

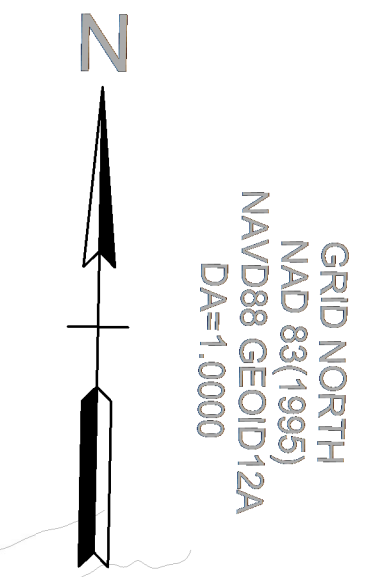
---

TOTAL ADDITIONAL UNITS: 7

TOTAL EXISTING UNITS: 7

TOTAL UNITS ON SITE: 14

TOTAL ACRES OF SITE: 41.45



1 SITE PLAN  
1" = 60'-0"

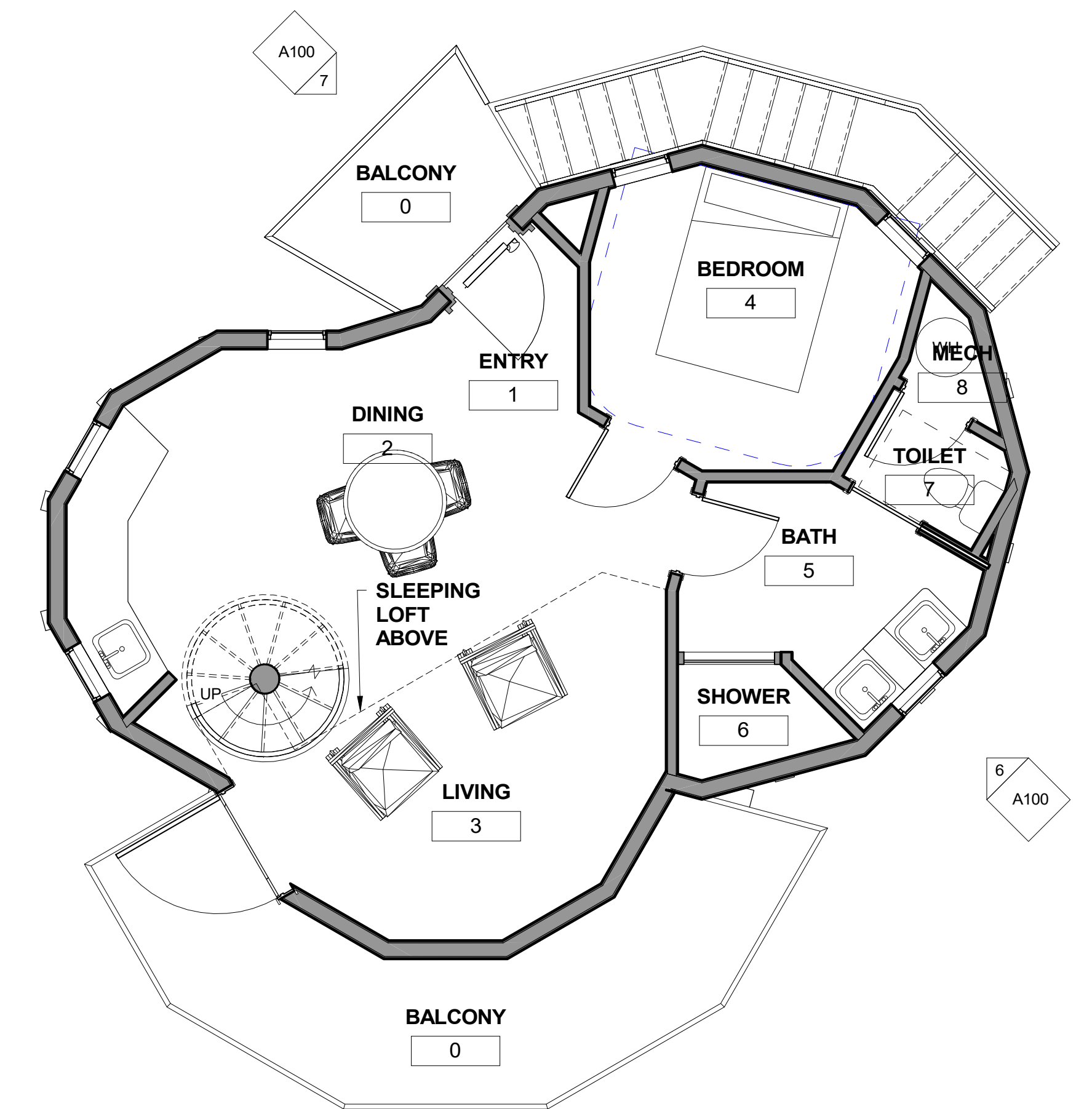
REVISIONS			PROJECT NUMBER
NO.	DESCRIPTION	DATE	22212
	7107 SEVIERVILLE PIKE, KNOXVILLE TN 37920		
	ISSUE DATE	02.15.23	
	SITE PLAN		
			<b>A000</b>



7 FAMILY AND LUXURY TREEHOUSE FRONT FACADE  
1/4" = 1'-0"



6 FAMILY AND LUXURY TREEHOUSE REAR FACADE  
1/4" = 1'-0"



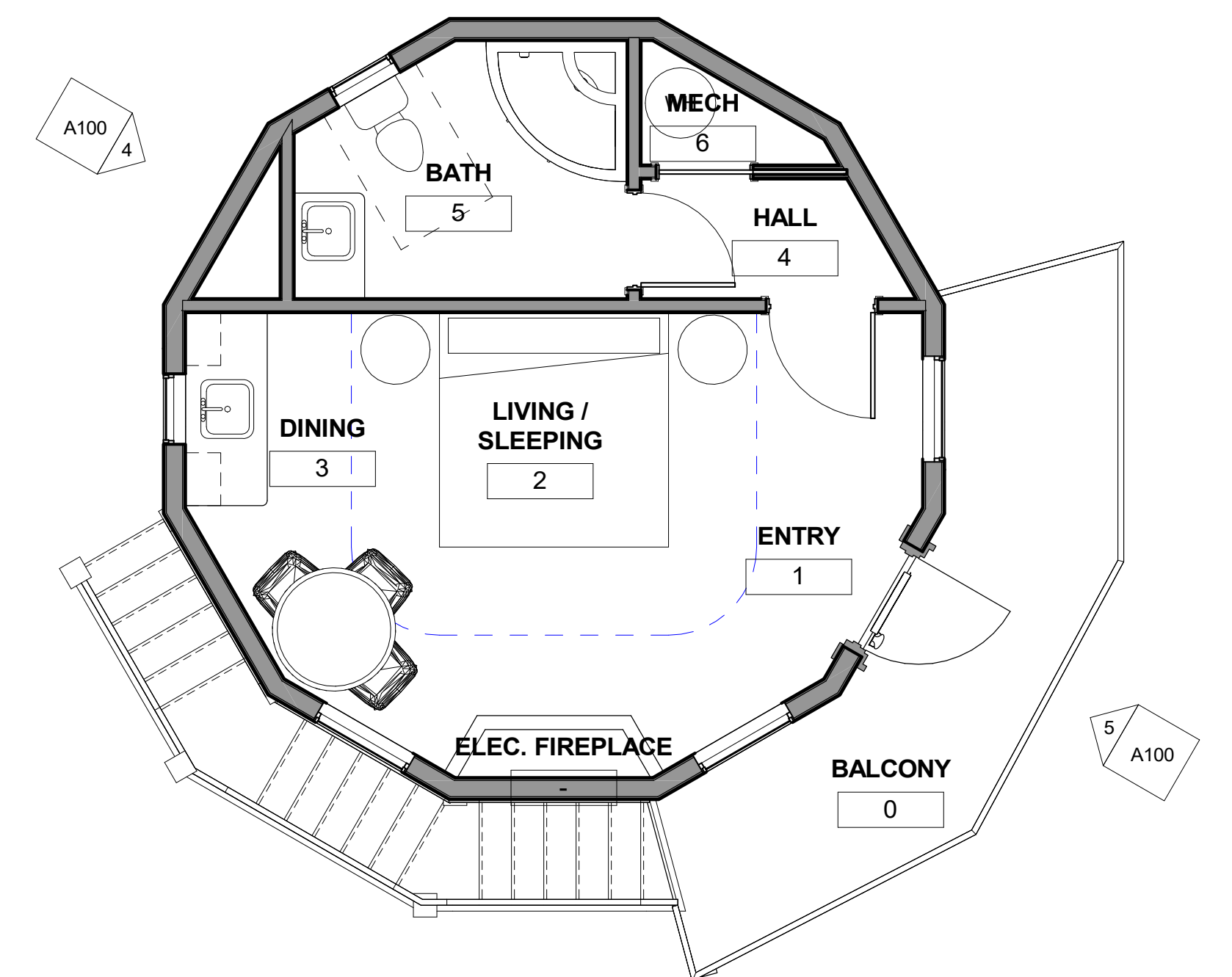
FAMILY AND LUXURY TREEHOUSE  
607 SQFT INTERIOR SPACE



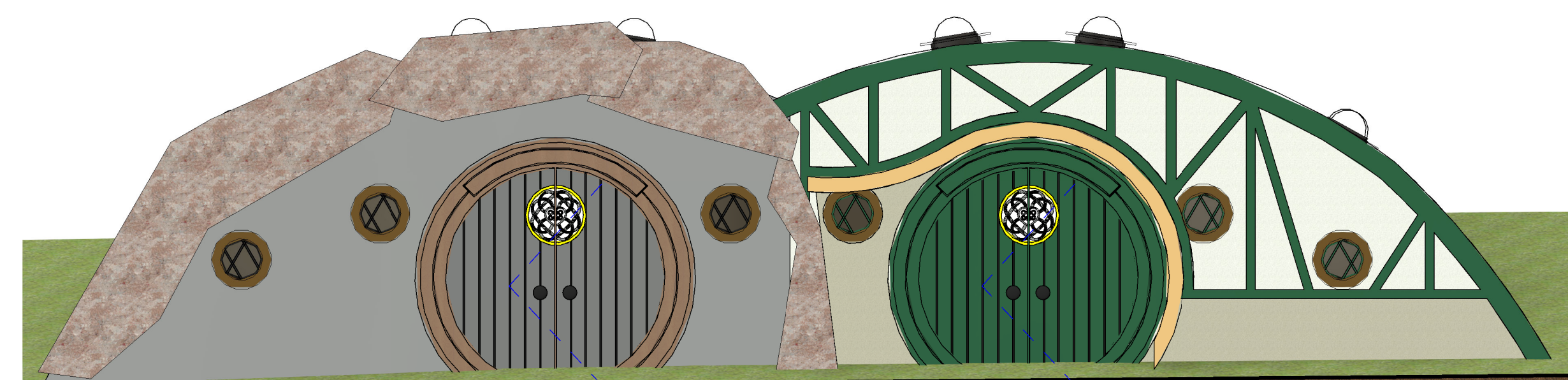
5 SINGLE TREEHOUSE FRONT FACADE  
1/4" = 1'-0"



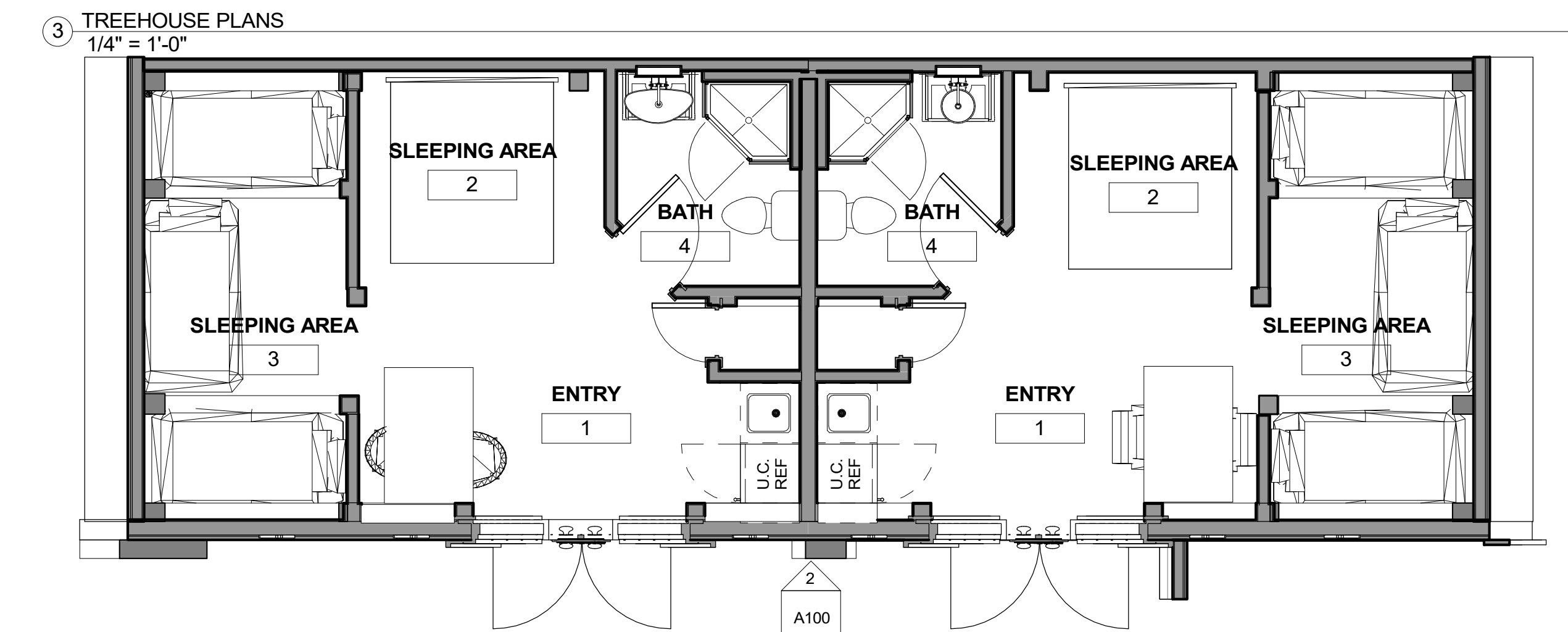
4 SINGLE TREEHOUSE REAR FACADE  
1/4" = 1'-0"



SINGLE TREEHOUSE  
390 SQFT INTERIOR SPACE



2 ADJACENT OVERNIGHT ACCOMMODATIONS ELEVATION  
1/4" = 1'-0"



804 SQFT INTERIOR SPACE  
ADJACENT OVERNIGHT ACCOMMODATIONS

1 ADJACENT OVERNIGHT ACCOMMODATIONS PLAN  
1/4" = 1'-0"



1 AERIAL SITE PLAN  
1" = 60'-0"

Revised: 3/1/2023

# 3-E-23-UR ALV TREEHOUSES

USE ON REVIEW SET

REVISIONS			PROJECT NUMBER
NO.	DESCRIPTION	DATE	22212
			7107 SEVIERVILLE PIKE, KNOXVILLE TN 37920
			ISSUE DATE 02.28.23
			AERIAL SITE PLAN
			<b>A101</b>