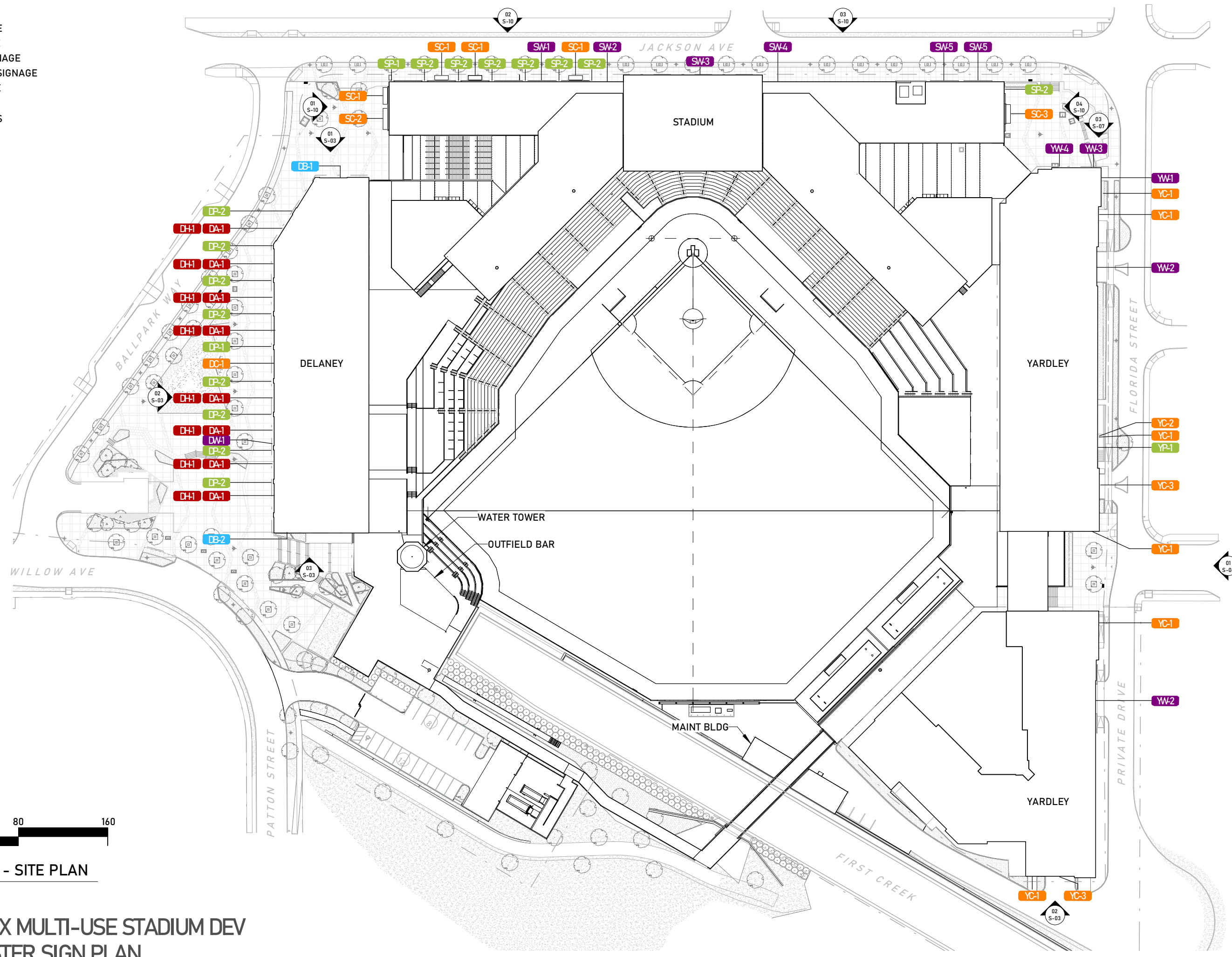


- BANNER SIGNAGE
 - CANOPY SIGNAGE
 - PROJECTING SIGNAGE
 - WALL MOUNTED SIGNAGE
 - AWNING SIGNAGE
- D/S/Y MODIFIERS FOR RESPECTIVE BUILDINGS



1 PHASE 1 - SITE PLAN
1" = 80'-0"

S-01 KNOX MULTI-USE STADIUM DEV
MASTER SIGN PLAN
PHASE 1

2-B-25-SU
rev. 2.5.2025

GEMAA
GEM Associated Architects: A Joint Venture
BarberMcMurry Architects + Design Innovation Architects

DELANEY SIGNAGE MASTER SCHEDULE

WALL MOUNTED SIGNAGE

SIGN NUMBER	SIGN TYPE	MAXIMUM ALLOWABLE SIGN AREA	MAX LENGTH	MAX HEIGHT	MAX PROJECTION FROM BUILDING	CLEAR HEIGHT ABOVE SIDEWALK	ILLUMINATION	NOTES	TOTAL AREA	TOTAL QUANTITY
DW-1	DELANEY ATTACHED WALL SIGN	200 SF	40'-0"	5'-0"	-	-	INTERNALLY LIT; NOT TO EXCEED 1 FC	CHANNEL CUT LETTERING	200 SF	1

PROJECTING SIGNAGE

SIGN NUMBER	SIGN TYPE	MAXIMUM ALLOWABLE SIGN AREA	MAX LENGTH	MAX HEIGHT	MAX PROJECTION FROM BUILDING	CLEAR HEIGHT ABOVE SIDEWALK	ILLUMINATION	NOTES	TOTAL AREA	TOTAL QUANTITY
DP-1	DELANEY PROJECTING BLADE SIGN	600 SF	-	50'-0"	12'-0"	5TH FLOOR	INTERNALLY LIT; NOT TO EXCEED 1 FC	-	600 SF	1
DP-2	TENANT PROJECTING BLADE SIGN	12 SF	-	2'-4"	5'-0"	MIN. 7'-0"	OPTIONAL; INTERNALLY LIT NOT TO EXCEED 1 FC	LETTERING UNIQUE TO TENANT	96 SF	UP TO 8

AWNING SIGNAGE

SIGN NUMBER	SIGN TYPE	MAXIMUM ALLOWABLE SIGN AREA	MAX LENGTH	MAX HEIGHT	MAX PROJECTION FROM BUILDING	CLEAR HEIGHT ABOVE SIDEWALK	ILLUMINATION	NOTES	TOTAL AREA	TOTAL QUANTITY
DA-1.1	AWNING SIGNAGE	372 SF	31'-0"	12'-0"	-	-	NONE	VINYL LETTERING/ LOGO UNIQUE TO TENANT	2,976 SF	UP TO 8
DA-1.2	AWNING SIGNAGE	42 SF	31'-0"	1'-4"	-	-	NONE	SIGNAGE CABINET W/ ROUTED ALUMINUM FACE/ PUSH THROUGH ACRYLIC LETTERING	336 SF	UP TO 8

AWNING HANGING SIGNAGE

SIGN NUMBER	SIGN TYPE	MAXIMUM ALLOWABLE SIGN AREA	MAX LENGTH	MAX HEIGHT	MAX PROJECTION FROM BUILDING	CLEAR HEIGHT ABOVE SIDEWALK	ILLUMINATION	NOTES	TOTAL AREA	TOTAL QUANTITY
DH-1	AWNING HANGING SIGNAGE	73 SF	31'-0"	2'-4"	-	7'-0"	NONE	CHANNEL CUT LETTERING OR SIGN CABINET	584 SF	UP TO 8

CANOPY SIGNAGE

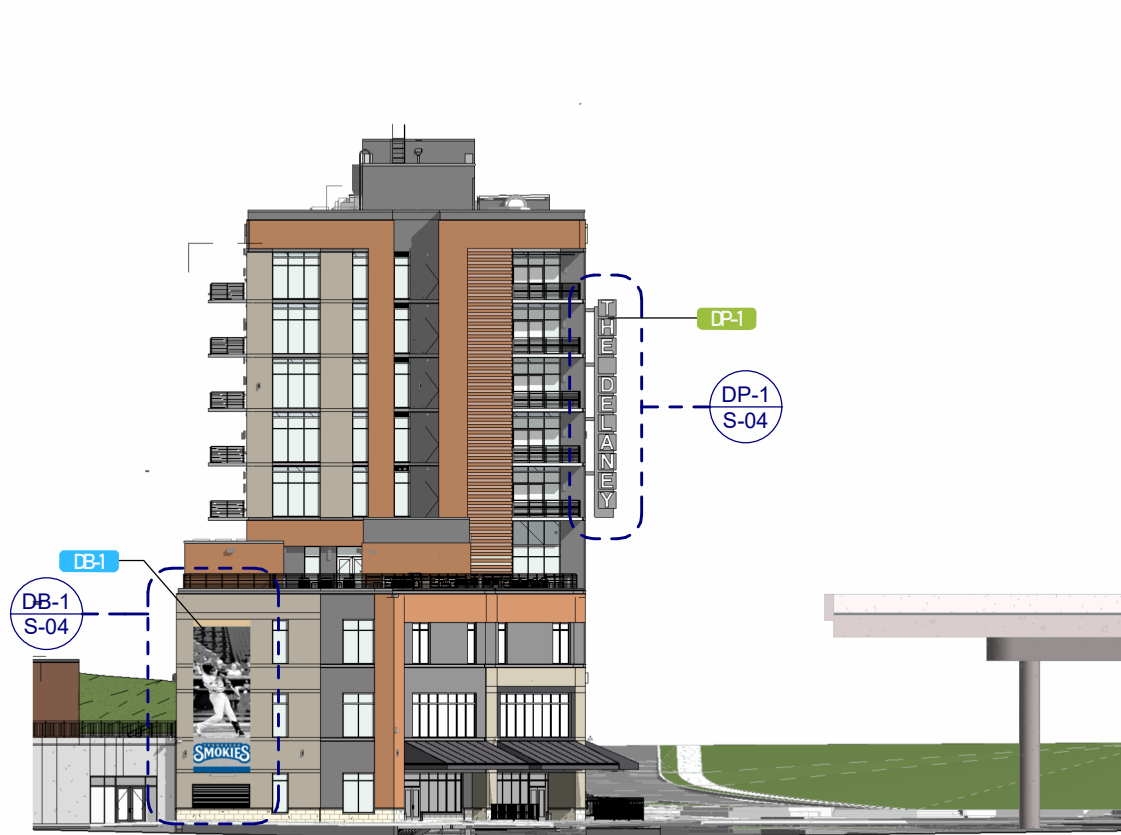
SIGN NUMBER	SIGN TYPE	MAXIMUM ALLOWABLE SIGN AREA	MAX LENGTH	MAX HEIGHT	MAX PROJECTION FROM BUILDING	CLEAR HEIGHT ABOVE SIDEWALK	ILLUMINATION	NOTES	TOTAL AREA	TOTAL QUANTITY
DC-1	DELANEY ENTRY SIGNAGE	30 SF	15'-0"	2'-0"	-	-	INTERNALLY LIT; NOT TO EXCEED 1 FC	CANOPY MOUNTED CHANNEL CUT LETTERING	30 SF	1

BANNER SIGNAGE

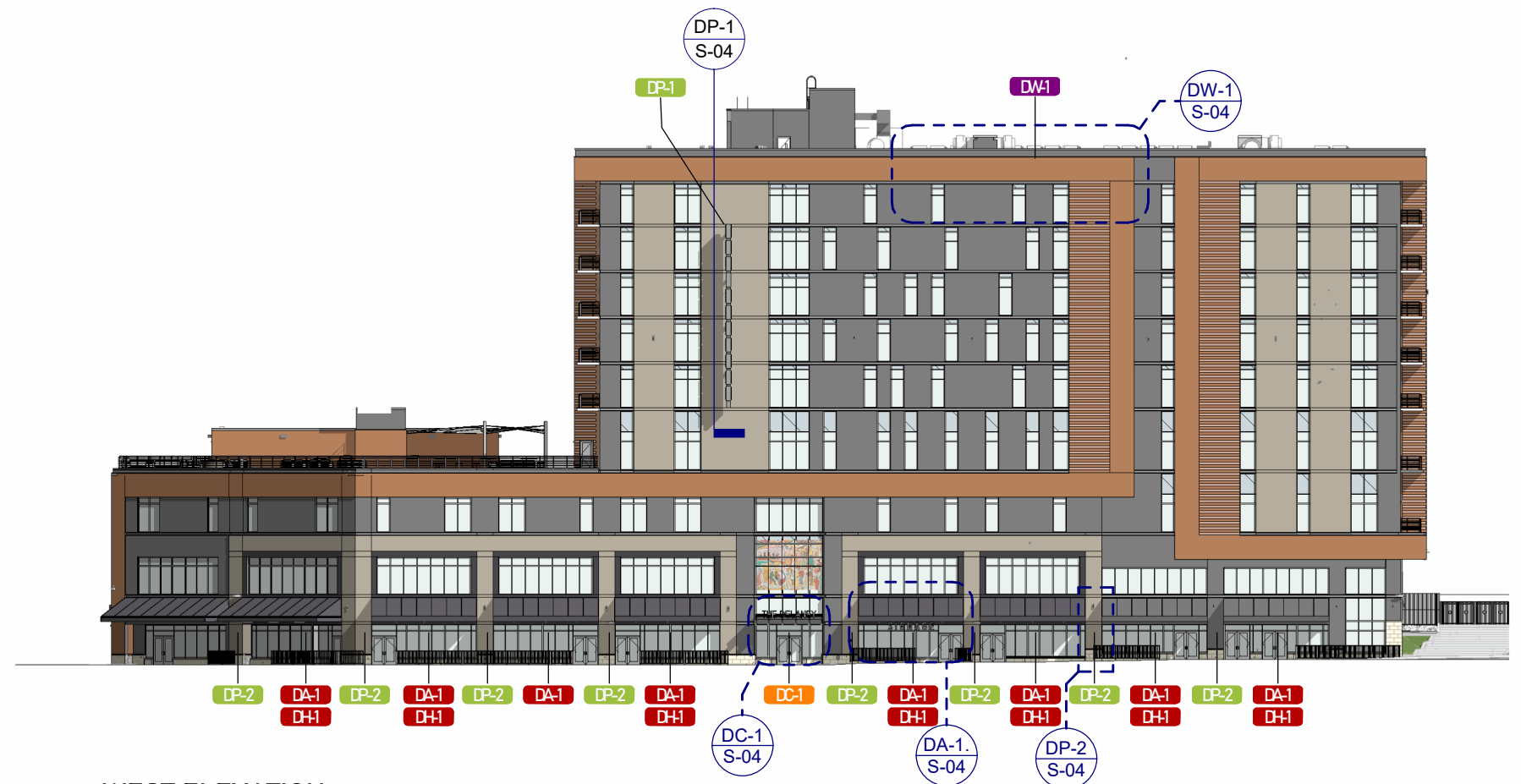
SIGN NUMBER	SIGN TYPE	MAXIMUM ALLOWABLE SIGN AREA	MAX LENGTH	MAX HEIGHT	MAX PROJECTION FROM BUILDING	CLEAR HEIGHT ABOVE SIDEWALK	ILLUMINATION	NOTES	TOTAL AREA	TOTAL QUANTITY
DB-1	DELANEY NORTH BANNER	384 SF	12'-0"	32'-0"	-	-	NONE	STRETCHED FABRIC MOUNTED TO EXTERIOR WALL	384 SF	1
DB-2	DELANEY SOUTH BANNER	264 SF	12'-0"	22'-0"	-	-	NONE	STRETCHED FABRIC MOUNTED TO EXTERIOR WALL	264 SF	1

SIDEWALK SIGNAGE

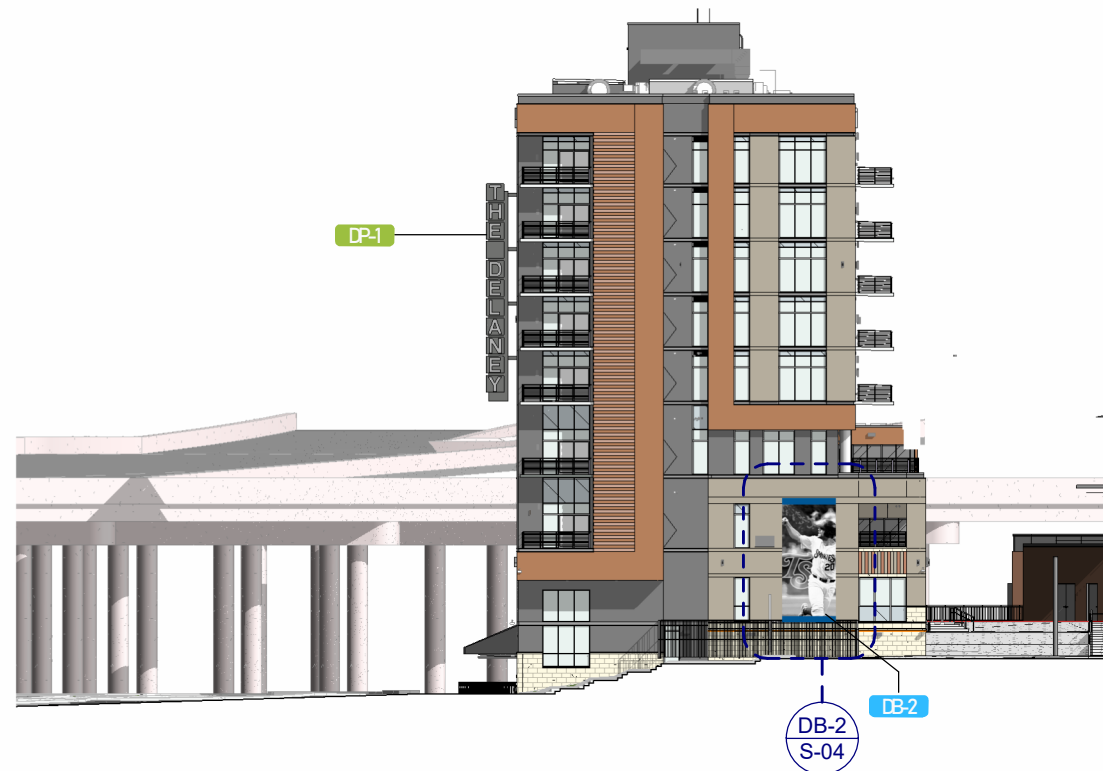
SIGN NUMBER	SIGN TYPE	MAXIMUM ALLOWABLE SIGN AREA	MAX LENGTH	MAX HEIGHT	MAX PROJECTION FROM BUILDING	CLEAR HEIGHT ABOVE SIDEWALK	ILLUMINATION	NOTES	TOTAL AREA	TOTAL QUANTITY
S-1	SIDEWALK SIGN	10 SF	2'-0"	5'-0"	WITHIN 15'-0" OF ENTRY	0'-0"	NONE	-	80 SF	UP TO 8



01 NORTH ELEVATION
1" = 40'-0"



02 WEST ELEVATION
1" = 40'-0"



03 SOUTH ELEVATION
1" = 40'-0"

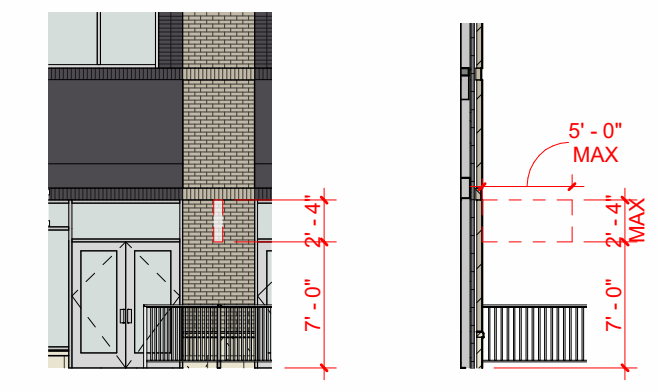
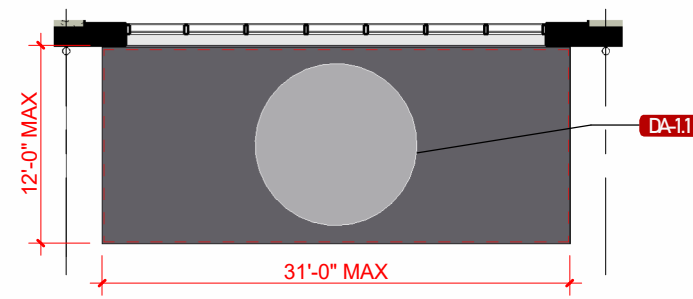
DELANEY	
*PRIMARY BUILDING ELEVATION:	32,555.3 sqf
NORTH ANGLE ELEVATION:	3,494.97 sqf
WEST ELEVATION:	29,060.33 sqf
TOTAL SIGNAGE AREA:	5,134 total signage sqf (15.77%)
NORTH ELEVATION SIGNAGE:	384 sqf
NORTH ANGLE ELEVATION SIGNAGE:	457 sqf
SOUTH ELEVATION SIGNAGE:	264 sqf
EAST ELEVATION SIGNAGE:	N/A
WEST ELEVATION SIGNAGE:	***4,029 sqf

*WALL AREA CALCULATIONS INCLUDE GLAZING
***BASED ON WORST CASE SCENARIO (DA-1.1, AND DH-1 ADDED TOGETHER) | DA-1.2 NOT INCLUDED IN CALCULATIONS

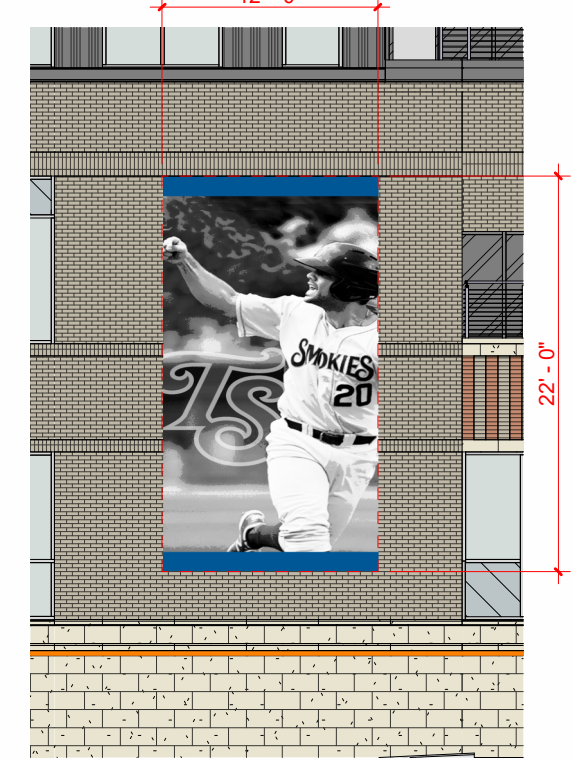
MUST BE PLACED ON A SIDEWALK WITHIN PUBLIC RIGHT-OF-WAY OR PUBLIC PROPERTY WITHIN 15 FEET OF THE ENTRY TO A BUSINESS OR OUTDOOR SPACE ASSOCIATED WITH THE BUSINESS

THERE IS NO REQUIRED MINIMUM SPACING BETWEEN SIDEWALK SIGNS FURNISHED BY DIFFERENT RETAIL TENANTS, HOWEVER, EACH TENANT SHALL BE LIMITED TO 1 SIGN.

S-1 SIDEWALK SIGN
3/32" = 1'-0"

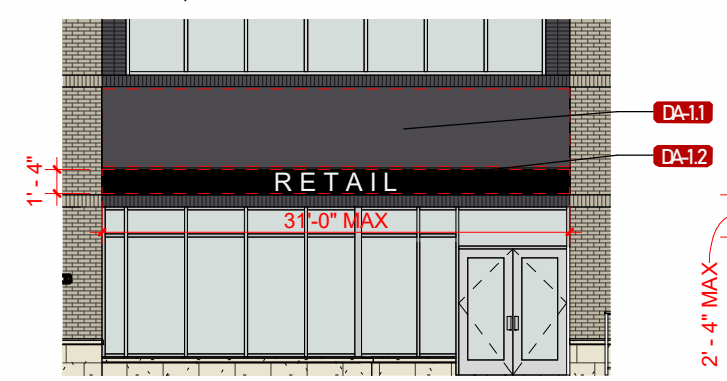


DP-2 TENANT BLADE SIGN
3/32" = 1'-0"

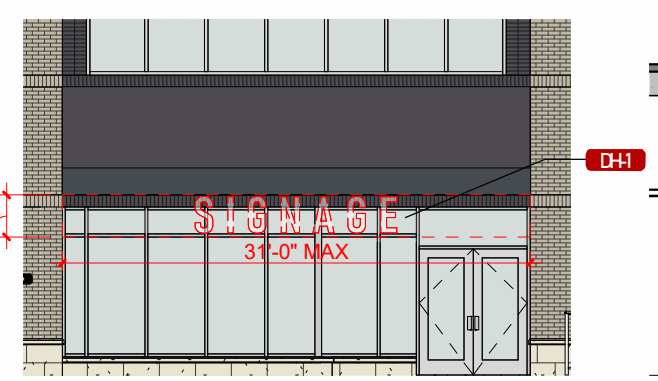


DB-2 SOUTH BANNER
3/32" = 1'-0"

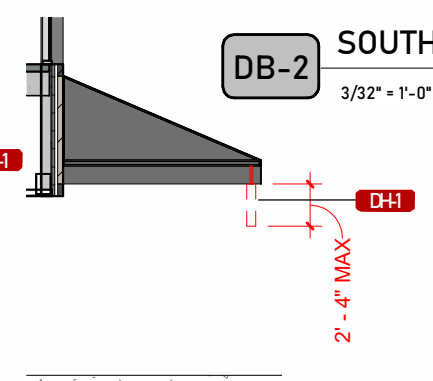
DA-1 AWNING SIGNAGE - TOP VIEW
3/32" = 1'-0"



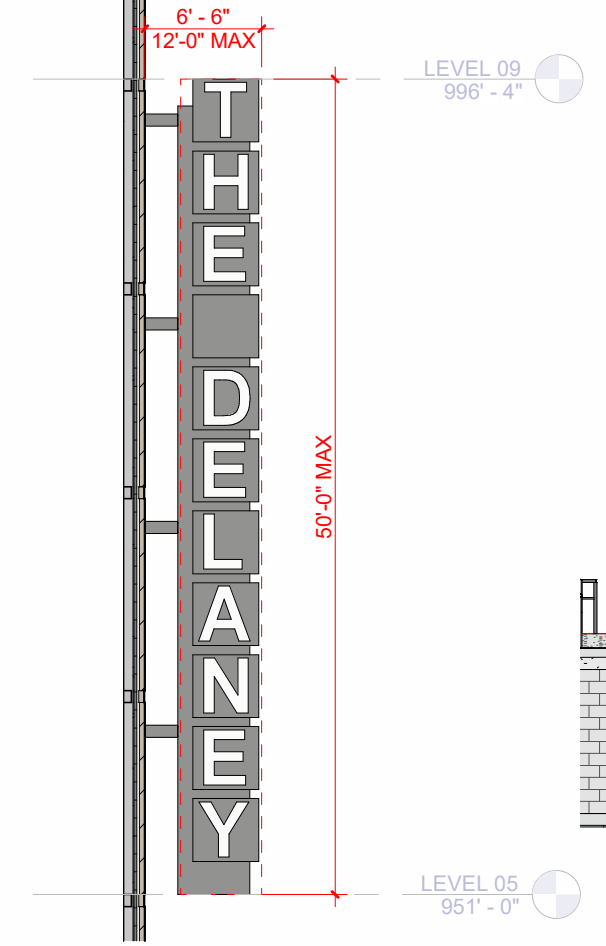
DA-1 AWNING SIGNAGE
3/32" = 1'-0"



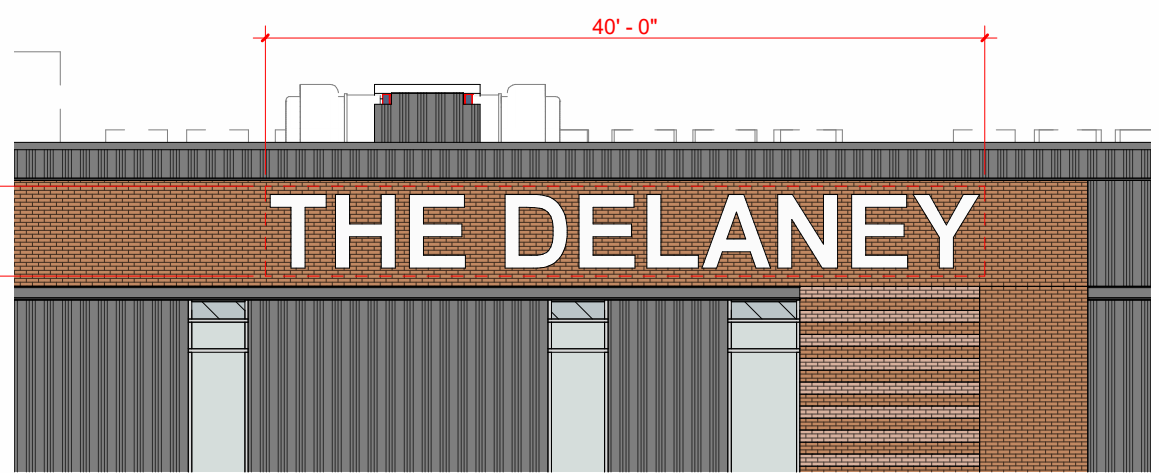
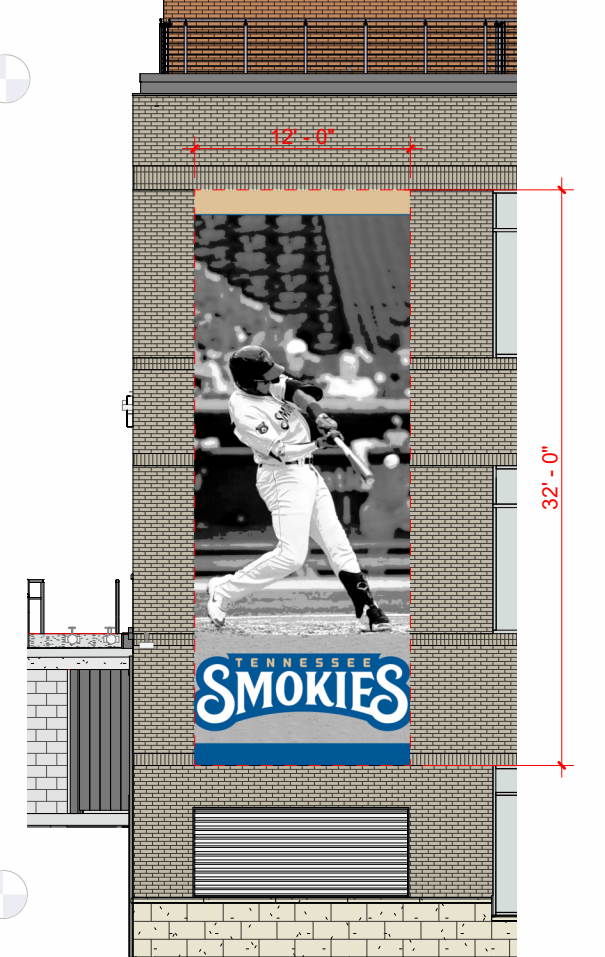
DH-1 AWNING HANGING SIGNAGE (ALT)
3/32" = 1'-0"



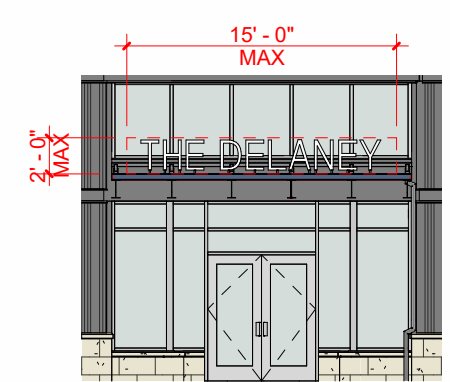
DB-1 NORTH BANNER
3/32" = 1'-0"



DP-1 DELANEY BLADE SIGN
3/32" = 1'-0"



DW-1 BUILDING ATTACHED WALL SIGN
3/32" = 1'-0"



DC-1 DELANEY ENTRY SIGNAGE
3/32" = 1'-0"

DELANEY	
*PRIMARY BUILDING ELEVATION:	32,555.3 sqf
NORTH ANGLE ELEVATION:	3,494.97 sqf
WEST ELEVATION:	29,060.33 sqf
TOTAL SIGNAGE AREA:	5,134 total signage sqf (15.77%)
NORTH ELEVATION SIGNAGE:	384 sqf
NORTH ANGLE ELEVATION SIGNAGE:	457 sqf
SOUTH ELEVATION SIGNAGE:	264 sqf
EAST ELEVATION SIGNAGE:	N/A
WEST ELEVATION SIGNAGE:	***4,029 sqf

*WALL AREA CALCULATIONS INCLUDE GLAZING
***BASED ON WORST CASE SCENARIO (DA-1.1, AND DH-1 ADDED TOGETHER) | DA-1.2 NOT INCLUDED IN CALCULATIONS

YARDLEY SIGNAGE MASTER SCHEDULE

WALL MOUNTED SIGNAGE

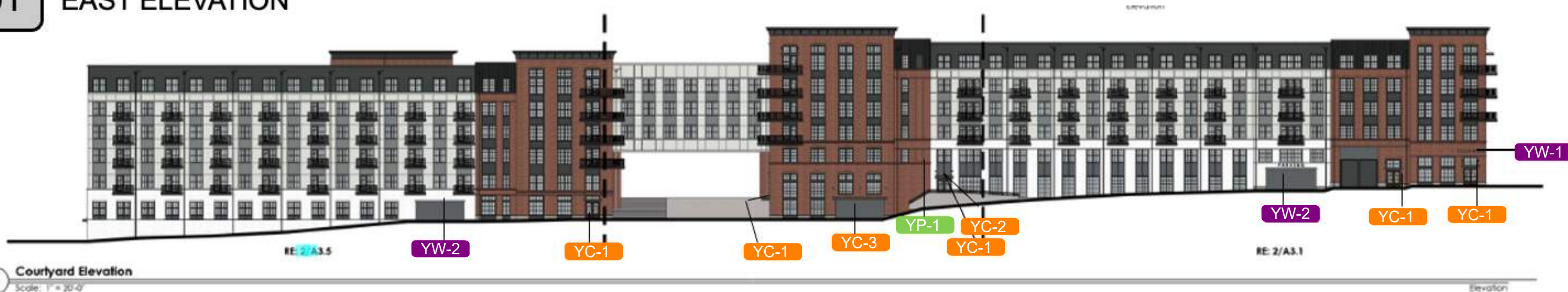
SIGN NUMBER	SIGN TYPE	MAXIMUM ALLOWABLE SIGN AREA	MAX LENGTH	MAX HEIGHT	MAX PROJECTION FROM BUILDING	CLEAR HEIGHT ABOVE SIDEWALK	ILLUMINATION	NOTES	TOTAL AREA	TOTAL QUANTITY
YW-1	D1 RACEWAY MOUNTED CHANNEL LETTERS	100 SF	20'-0"	5'-0"	-	14'-0"	INTERNALLY LIT; NOT TO EXCEED 1 FC		100 SF	1
YW-2	WALL MOUNTED	44 SF	22'-0"	2'-0"	-	-	NONE		88 SF	2
YW-3	WALL MOUNTED	36 SF	6'-6"	5'-6"	-	-	NONE		36 SF	1
YW-4	WALL MOUNTED	143 SF	45'-2"	3'-2"	4" - 6" LETTERING	-	NONE		143 SF	1

CANOPY SIGNAGE

SIGN NUMBER	SIGN TYPE	MAXIMUM ALLOWABLE SIGN AREA	MAX LENGTH	MAX HEIGHT	MAX PROJECTION FROM BUILDING	CLEAR HEIGHT ABOVE SIDEWALK	ILLUMINATION	NOTES	TOTAL AREA	TOTAL QUANTITY
YC-1	CANOPY VINYL	6 SF	8'-0"	0'-8"	-	-	NONE		36 SF	6
YC-2	CANOPY MOUNTED	14 SF	8'-0"	1'-8"	-	-	NONE		14 SF	1
YC-3	CANOPY MOUNTED	44 SF	22'-0"	2'-0"	-	-	NONE		88 SF	2

PROJECTING SIGNAGE

SIGN NUMBER	SIGN TYPE	MAXIMUM ALLOWABLE SIGN AREA	MAX LENGTH	MAX HEIGHT	MAX PROJECTION FROM BUILDING	CLEAR HEIGHT ABOVE SIDEWALK	ILLUMINATION	NOTES	TOTAL AREA	TOTAL QUANTITY
YP-1	PROJECTING BLADE SIGN	60 SF	4'-0"	15'-0"	5'-6"	20'-0"	INTERNALLY LIT; NOT TO EXCEED 1 FC	CABINET SIGN WITH PUSH THROUGH LETTERING	60 SF	1



YARDLEY	
*PRIMARY BUILDING ELEVATION:	41,881.91 sqf
EAST ELEVATION:	41,881.91 sqf
TOTAL SIGNAGE AREA:	565 total signage sqf (1.35%)
NORTH ELEVATION SIGNAGE:	179 sqf
NORTH ANGLE ELEVATION SIGNAGE:	N/A
SOUTH ELEVATION SIGNAGE:	50 sqf
EAST ELEVATION SIGNAGE:	336 sqf
WEST ELEVATION SIGNAGE:	N/A

*WALL AREA CALCULATIONS INCLUDE GLAZING



02 WEST ELEVATION



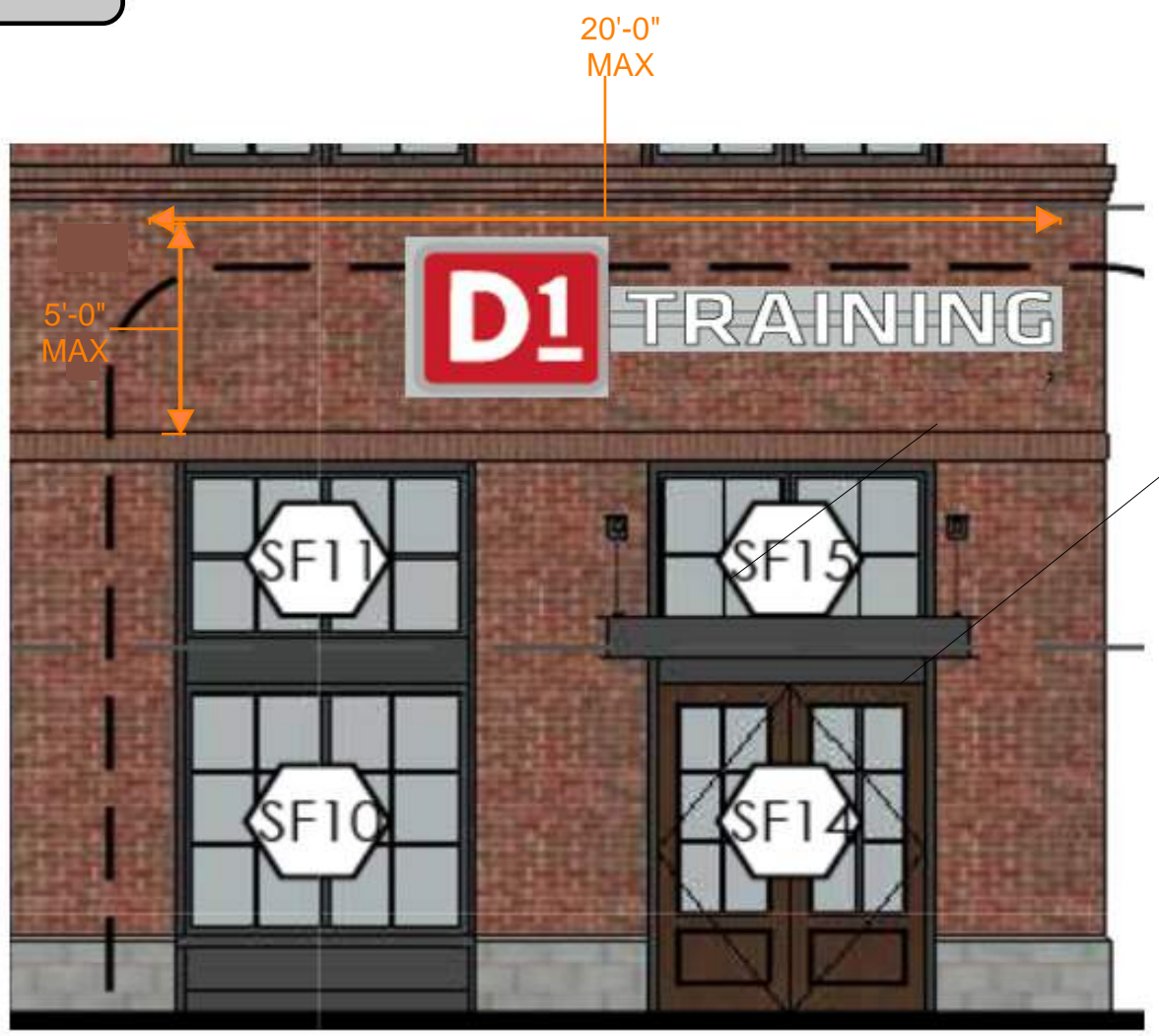
03 NORTH ELEVATION



YARDLEY	
*PRIMARY BUILDING ELEVATION:	41,881.91 sqf
EAST ELEVATION:	41,881.91 sqf
TOTAL SIGNAGE AREA:	565 total signage sqf (1.35%)
NORTH ELEVATION SIGNAGE:	179 sqf
NORTH ANGLE ELEVATION SIGNAGE:	N/A
SOUTH ELEVATION SIGNAGE:	50 sqf
EAST ELEVATION SIGNAGE:	336 sqf
WEST ELEVATION SIGNAGE:	N/A

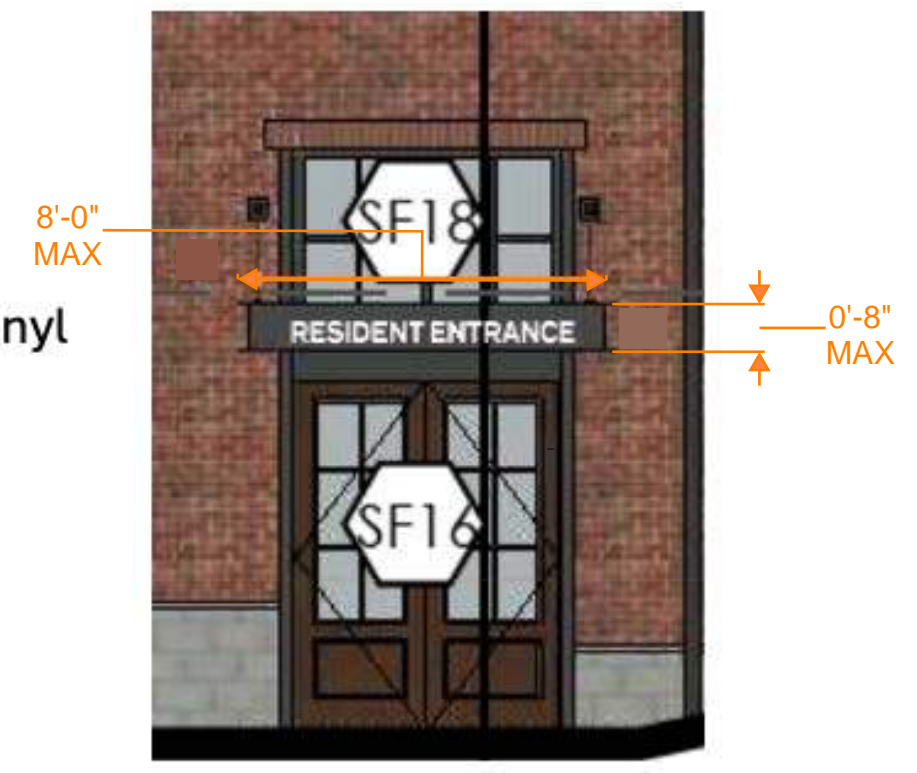
*WALL AREA CALCULATIONS INCLUDE GLAZING

YW-1 Building Attached Wall Sign

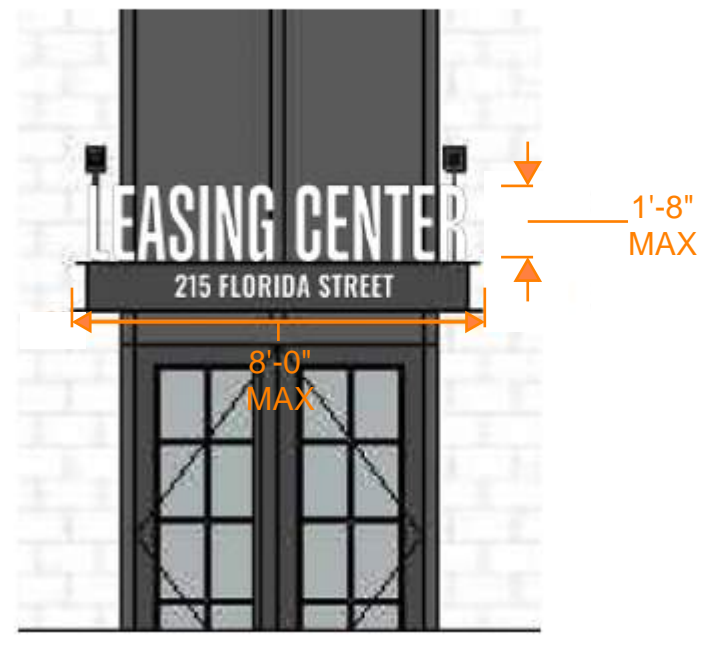


YC-1 Canopy Vinyl - Yardley

Retail Canopy Vinyl



YC-2 Yardley Entry Sign – Canopy Mounted



YARDLEY	
*PRIMARY BUILDING ELEVATION:	41,881.91 sqf
EAST ELEVATION:	41,881.91 sqf
TOTAL SIGNAGE AREA:	565 total signage sqf (1.35%)
NORTH ELEVATION SIGNAGE:	179 sqf
NORTH ANGLE ELEVATION SIGNAGE:	N/A
SOUTH ELEVATION SIGNAGE:	50 sqf
EAST ELEVATION SIGNAGE:	336 sqf
WEST ELEVATION SIGNAGE:	N/A

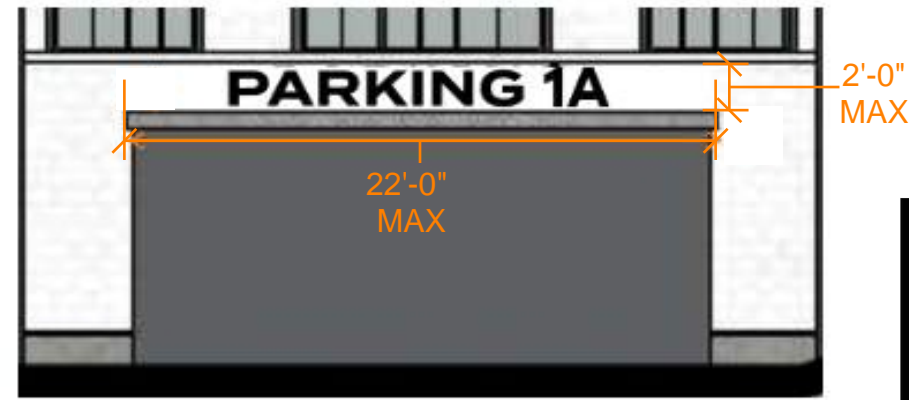
*WALL AREA CALCULATIONS INCLUDE GLAZING



YC-3 Canopy Mounted

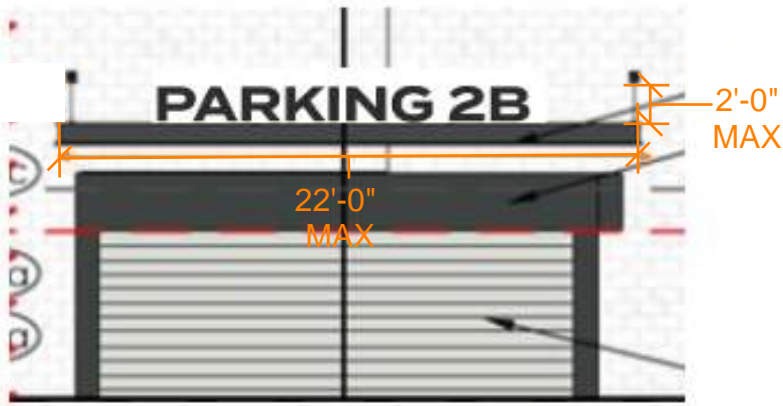
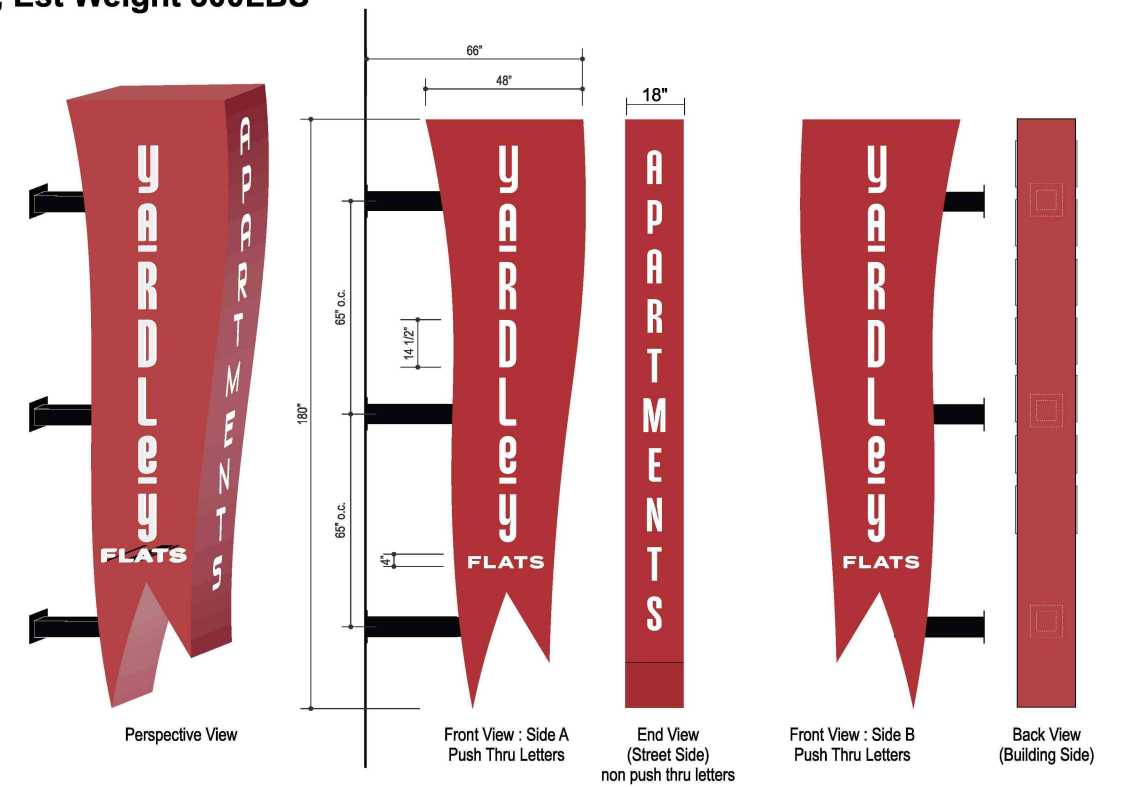
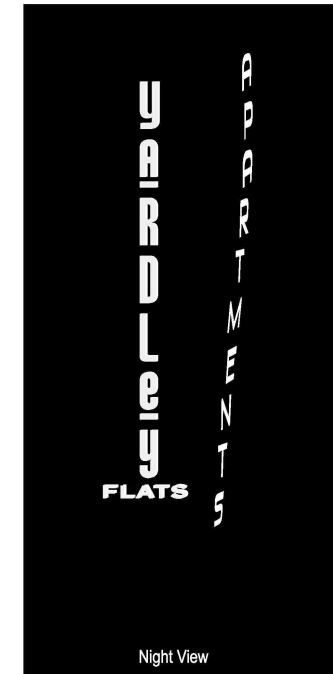


YW-2 Building Attached Wall Sign

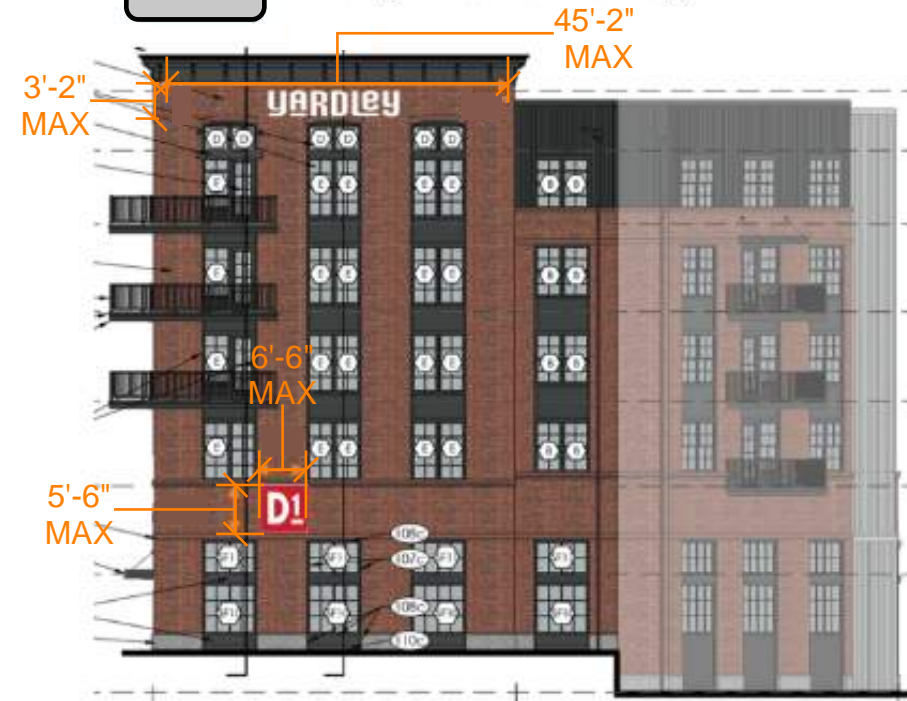


YP-3 Blade Sign

1) 48" x 180" x 18" Alum. Illuminated Sign
 Routed graphics,, Sides .75" push thru ,End Backed w/ White Acrylic
 Cabinet Painted CMYK / 15-100-90-10 Red
 Mounted with (3) 6" Square alum tubes 3).25" thick 10" x 10" Plates, Bolts Directly to Build.
 Led Illumination, Est Weight 300LBS



YW-4 Building Attached Wall Sign



YW-3 Tenant Building Attached Wall Sign



YARDLEY	
*PRIMARY BUILDING ELEVATION:	41,881.91 sqf
EAST ELEVATION:	41,881.91 sqf
TOTAL SIGNAGE AREA:	565 total signage sqf (1.35%)
NORTH ELEVATION SIGNAGE:	179 sqf
NORTH ANGLE ELEVATION SIGNAGE:	N/A
SOUTH ELEVATION SIGNAGE:	50 sqf
EAST ELEVATION SIGNAGE:	336 sqf
WEST ELEVATION SIGNAGE:	N/A

*WALL AREA CALCULATIONS INCLUDE GLAZING

STADIUM SIGNAGE MASTER SCHEDULE

WALL MOUNTED SIGNAGE

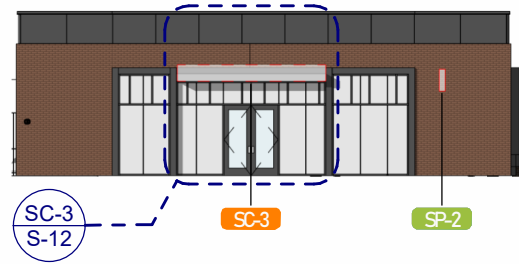
SIGN NUMBER	SIGN TYPE	MAXIMUM ALLOWABLE SIGN AREA	MAX LENGTH	MAX HEIGHT	MAX PROJECTION FROM BUILDING	CLEAR HEIGHT ABOVE SIDEWALK	ILLUMINATION	NOTES	TOTAL AREA	TOTAL QUANTITY
SW-1	TENANT ATTACHED WALL SIGN	34 SF	18'-8"	1'-10"	-	-	INTERNALLY LIT; NOT TO EXCEED 1 FC	CHANNEL CUT LETTERING OR SIGN CABINET	34 SF	1
SW-2	STADIUM SIGNAGE MURAL	639 SF	23'-8"	27'-0"	-	-	NONE	PAINTED OR VINYL	639 SF	1
SW-3	STADIUM SIGNAGE MURAL	1500 SF	120'-0"	12'-6"	-	-	NONE	PAINTED OR VINYL	1500 SF	1
SW-4	STADIUM SIGNAGE MURAL	474 SF	23'-8"	20'-0"	-	-	NONE	PAINTED OR VINYL	474 SF	1
SW-5	TENANT ATTACHED WALL SIGN	46 SF	25'-4"	1'-10"	-	-	INTERNALLY LIT; NOT TO EXCEED 1 FC	CHANNEL CUT LETTERING OR SIGN CABINET	92 SF	UP TO 2

PROJECTING SIGNAGE

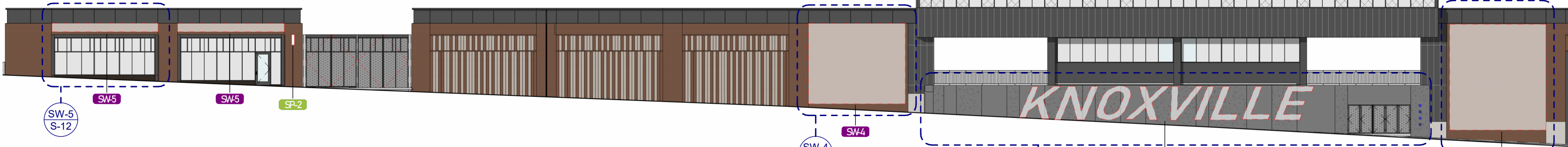
SIGN NUMBER	SIGN TYPE	MAXIMUM ALLOWABLE SIGN AREA	MAX LENGTH	MAX HEIGHT	MAX PROJECTION FROM BUILDING	CLEAR HEIGHT ABOVE SIDEWALK	ILLUMINATION	NOTES	TOTAL AREA	TOTAL QUANTITY
SP-1	STADIUM PROJECTING MARQUEE SIGN	111 SF	-	20'-0"	5'-7"	12'-9"	INTERNALLY LIT; NOT TO EXCEED 1 FC	DOUBLE SIDED SIGN CABINET	111 SF	1
SP-2	TENANT PROJECTING BLADE SIGN	12 SF	-	2'-4"	5'-0"	MIN. 7'-0"	OPTIONAL; INTERNALLY LIT NOT TO EXCEED 1 FC	DOUBLE SIDED SIGN CABINET	84 SF	UP TO 7

CANOPY SIGNAGE

SIGN NUMBER	SIGN TYPE	MAXIMUM ALLOWABLE SIGN AREA	MAX LENGTH	MAX HEIGHT	MAX PROJECTION FROM BUILDING	CLEAR HEIGHT ABOVE SIDEWALK	ILLUMINATION	NOTES	TOTAL AREA	TOTAL QUANTITY
SC-1	TENANT CANOPY SIGN	23 SF	12'-4"	1'-10"	-	-	INTERNALLY LIT; NOT TO EXCEED 1 FC	CHANNEL CUT LETTERING	92 SF	UP TO 4
SC-2	BOX OFFICE CANOPY SIGN	16 SF	18'-10"	0'-10"	-	-	INTERNALLY LIT; NOT TO EXCEED 1 FC	CHANNEL CUT LETTERING	16 SF	1
SC-3	TENANT CANOPY SIGN	31 SF	16'-7 1/2"	1'-10"	-	-	INTERNALLY LIT; NOT TO EXCEED 1 FC	CHANNEL CUT LETTERING	31 SF	1



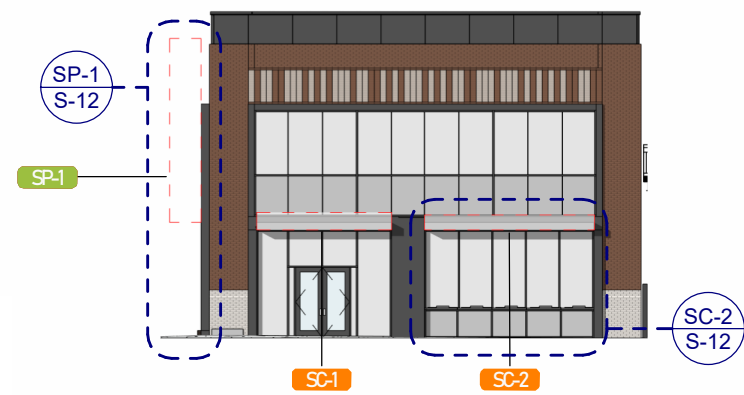
4 ELEVATION - EAST ENTRY
3/64" = 1'-0"



3 ELEVATION - JACKSON AVENUE 1
3/64" = 1'-0"



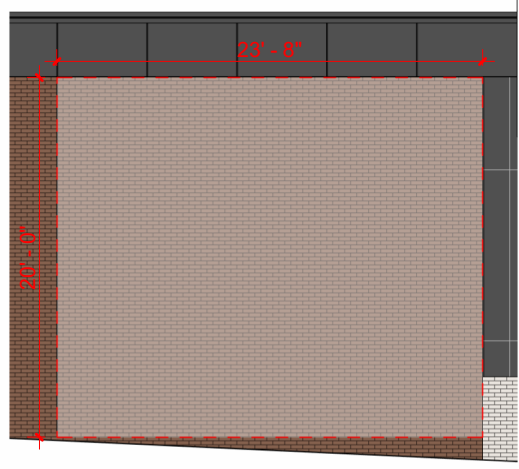
2 ELEVATION - JACKSON AVENUE 2
3/64" = 1'-0"



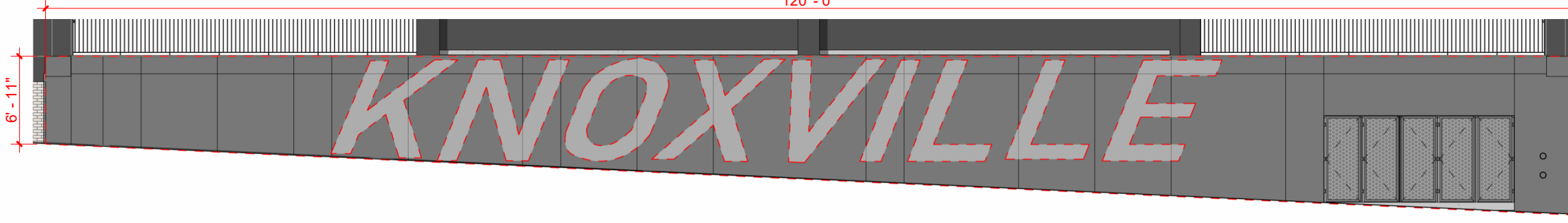
1 ELEVATION - WEST ENTRY
3/64" = 1'-0"

STADIUM	
*PRIMARY BUILDING ELEVATION:	19,177.93 sqf
NORTH ELEVATION:	19,177.93 sqf
TOTAL SIGNAGE AREA:	3,073 total signage sqf (16.02%)
NORTH ELEVATION SIGNAGE:	2,991 sqf
NORTH ANGLE ELEVATION SIGNAGE:	N/A
SOUTH ELEVATION SIGNAGE:	N/A
EAST ELEVATION SIGNAGE:	43 sqf
WEST ELEVATION SIGNAGE:	39 sqf

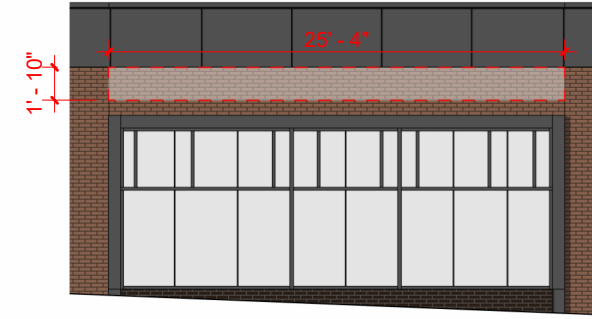
*WALL AREA CALCULATIONS INCLUDE GLAZING



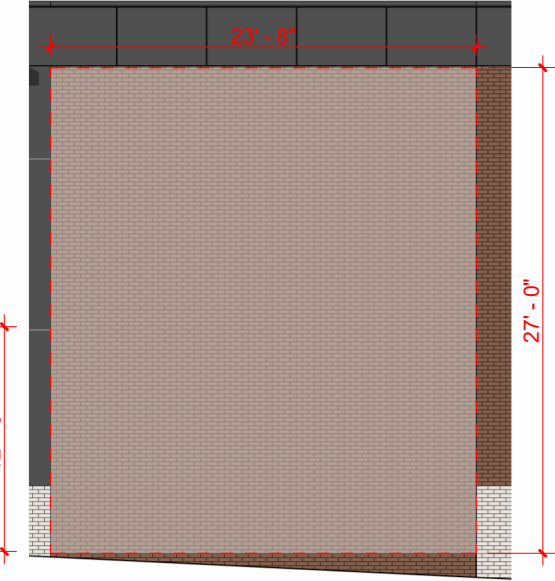
SW-4 STADIUM PAINTED SIGN 03
3/32" = 1'-0"



SC-3 TENANT CANOPY SIGN
3/32" = 1'-0"

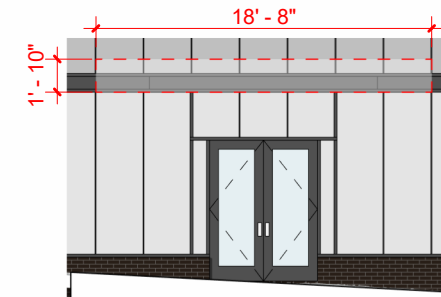


SW-5 TENANT WALL SIGN 02
3/32" = 1'-0"

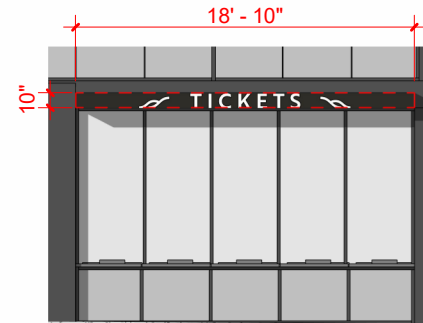


SW-2 STADIUM PAINTED SIGN 01
3/32" = 1'-0"

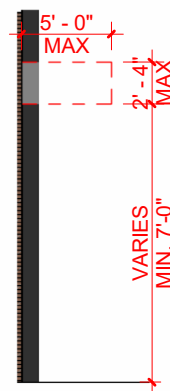
SW-3 STADIUM PAINTED SIGN 02
3/32" = 1'-0"



SW-1 TENANT WALL SIGN 01
3/32" = 1'-0"



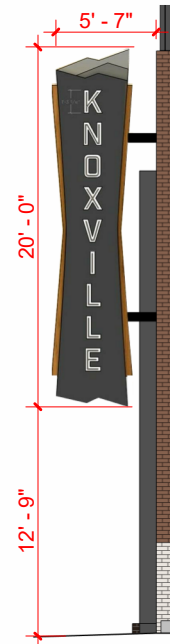
SC-2 BOX OFFICE CANOPY
3/32" = 1'-0"



SP-2 TENANT BLADE SIGN
3/32" = 1'-0"



SC-1 TENANT SIGNAGE
3/32" = 1'-0"



SP-1 MARQUEE SIGN
3/32" = 1'-0"

STADIUM	
*PRIMARY BUILDING ELEVATION:	19,177.93 sqf
NORTH ELEVATION:	19,177.93 sqf
TOTAL SIGNAGE AREA:	3,073 total signage sqf (16.02%)
NORTH ELEVATION SIGNAGE:	2,991 sqf
NORTH ANGLE ELEVATION SIGNAGE:	N/A
SOUTH ELEVATION SIGNAGE:	N/A
EAST ELEVATION SIGNAGE:	43 sqf
WEST ELEVATION SIGNAGE:	39 sqf

*WALL AREA CALCULATIONS INCLUDE GLAZING