

ALOFT HOTEL

SIGNAGE

364 LOVELL ROAD
KNOXVILLE, TN 37922

RANDOLPH ARCHITECTURE



**randolph
architecture**

9724 kingston pike
suite 305 B
knoxville, tn 37922
v: 865.357.3750
f: 865.357.3746



PERMIT
SET

2017_01

PROJECT INFORMATION

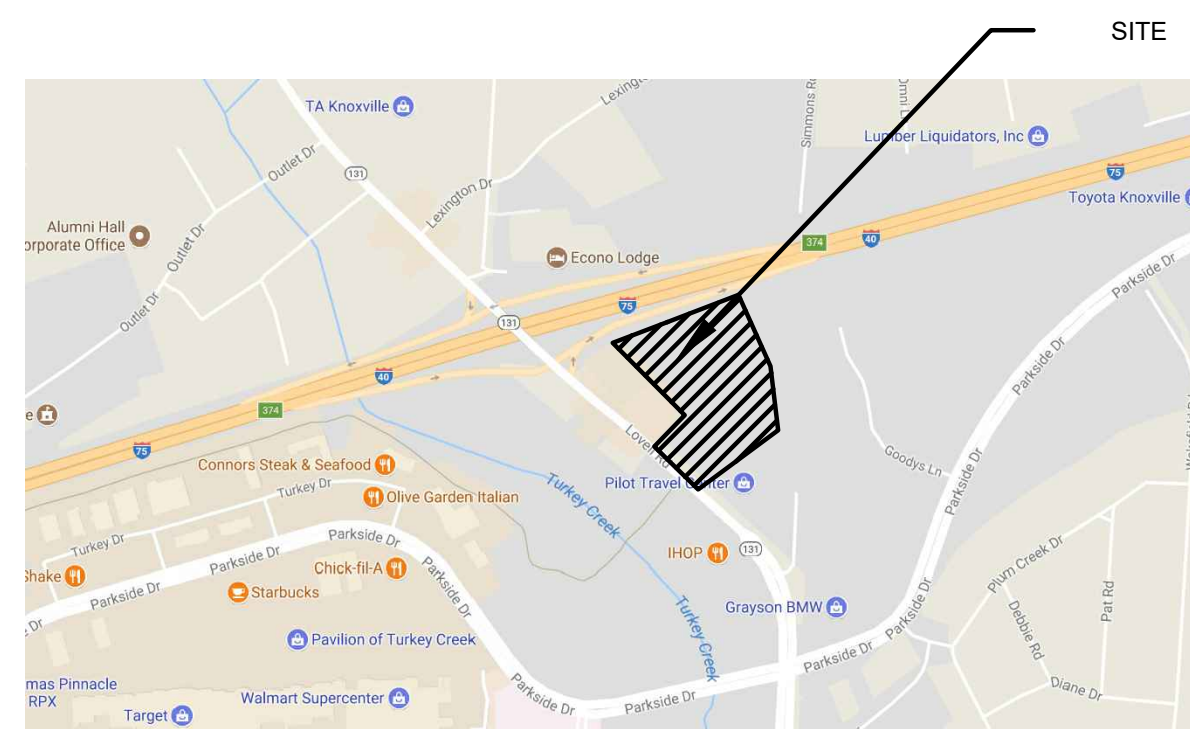
PROJECT NAME:
ALOFT HOTEL

PROJECT AND PROPERTY OWNER:
NICK PATEL
TURKEY CREEK HOSPITALITY
6324 PAPERMILL DRIVE
KNOXVILLE, TN 37919
(865) 405-6425

PROJECT LOCATION:
364 LOVELL ROAD
KNOXVILLE, TN 37922

PROJECT CONTACT PERSON:
MARK RANDOLPH, AIA
RANDOLPH ARCHITECTURE
550 W. MAIN STREET
SUITE 725
KNOXVILLE, TN 37902
PHONE (865) 357-3750
FAX (865) 357-3746

VICINITY MAP



LIST OF DRAWINGS

	REVISION #
CVR	COVERSHEET
SURVEY	
EXBT	ENLARGED SITE PLAN
ARCHITECTURAL	
C1.01	SITE PLAN
FOR INFORMATION PURPOSES	
1	SIGNAGE SITE PLAN
2	EXISTING SIGN NO. 1 ELEVATIONS
3	EXISTING SIGN NO. 2, 3, & 5 ELEVATIONS
4	EXISTING SIGN NO. 1 & 5 SECTION
5	EXISTING SIGN NO. 2 ELEVATIONS AND DETAILS
6	EXISTING SIGN NO. 3 ELEVATIONS
7	EXISTING SIGN NO. 3 SECTIONS AND DETAILS
8	EXISTING SIGN NO. 4 ELEVATIONS
9	EXISTING SIGN NO. 4 SECTION
10	PROPOSED NEW SIGN NO. 6 ELEVATION
11	PROPOSED NEW SIGN NO. 6 SECTION AND ELEVATION
12	PROPOSED NEW SIGN NO. 7 ELEVATIONS
13	PROPOSED NEW SIGN NO. 8 ELEVATIONS

ALOFT HOTEL SIGNAGE
364 LOVELL ROAD
KNOXVILLE, TENNESSEE 37922

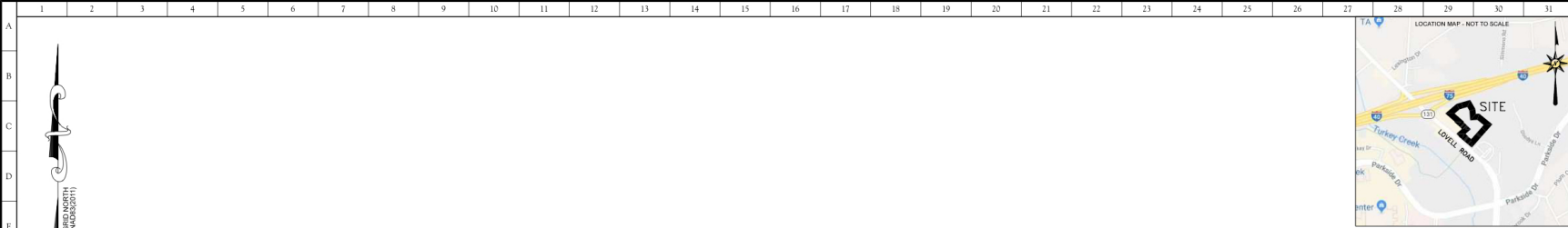
Issue Date 12-03-2021

Drawn Checked
HGB RMR

Revisions

2-A-22-SU
Revised: 2/1/2022

cvr
coversheet



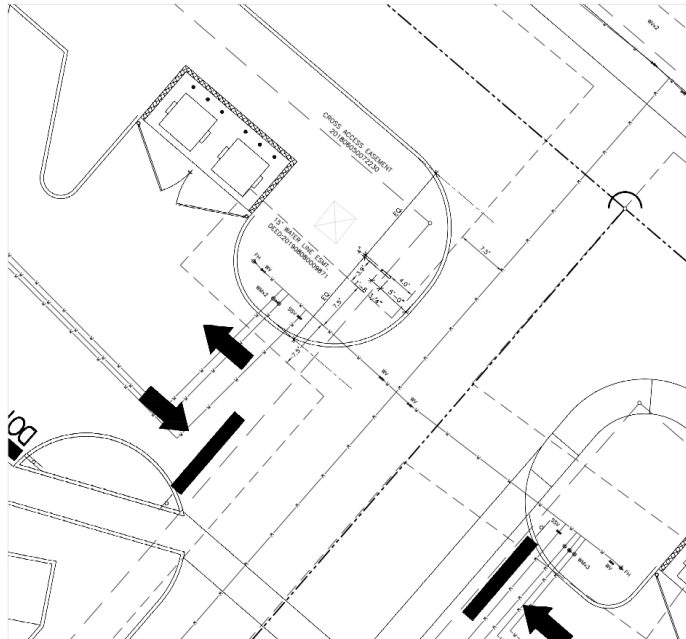
SITE, INCORPORATED
CIVIL ENGINEERS & SURVEYORS

10215 Technology Drive, Suite 304
 Knoxville, TN 37932
 (603) 777-4160
 www.site-incorporated.com

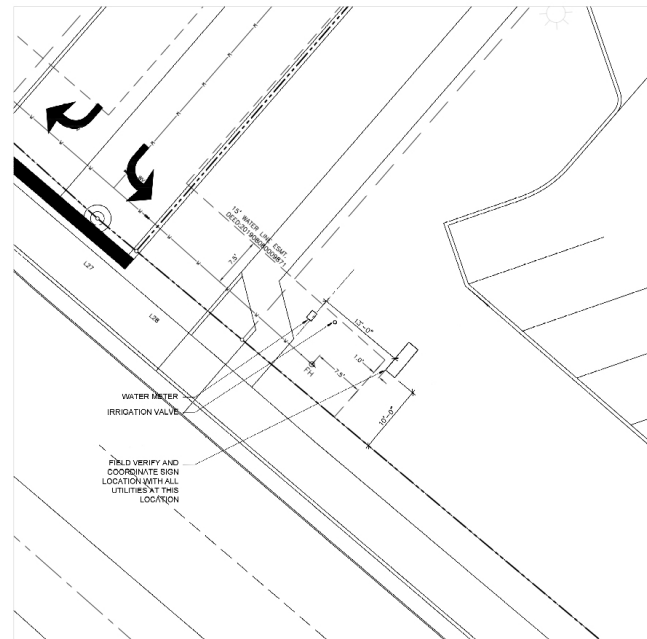


NOTES:
 1.) THE PURPOSE OF THIS EXHIBIT IS TO SHOW THE LIMITS OF THE 15 FOOT WATER LINE EASEMENT IN RELATION TO THE PROPOSED SIGN AS SHOWN HEREON. ADDITIONAL MATTERS ARE NOT SHOWN OR ADDRESSED HEREON.
 2.) DESIGN LOCATIONS ARE AS SUPPLIED BY RANDOLF ARCHITECTURE DATED 12-03-2021.

ENLARGED SIGN NO. 7



ENLARGED SIGN NO. 8



LEGEND OF SYMBOLS

WM ⊙	WATER METER
WV ⊕	WATER VALVE
SV ⊕	SPRINKLER VALVE
FI ⊕	FIRE HYDRANT
---	WATER LINE
- - - -	PROPERTY LINE



2-A-22-SU
 Revised: 2/1/2022

Exhibit Overlay for

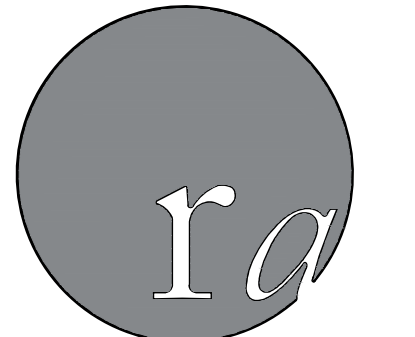
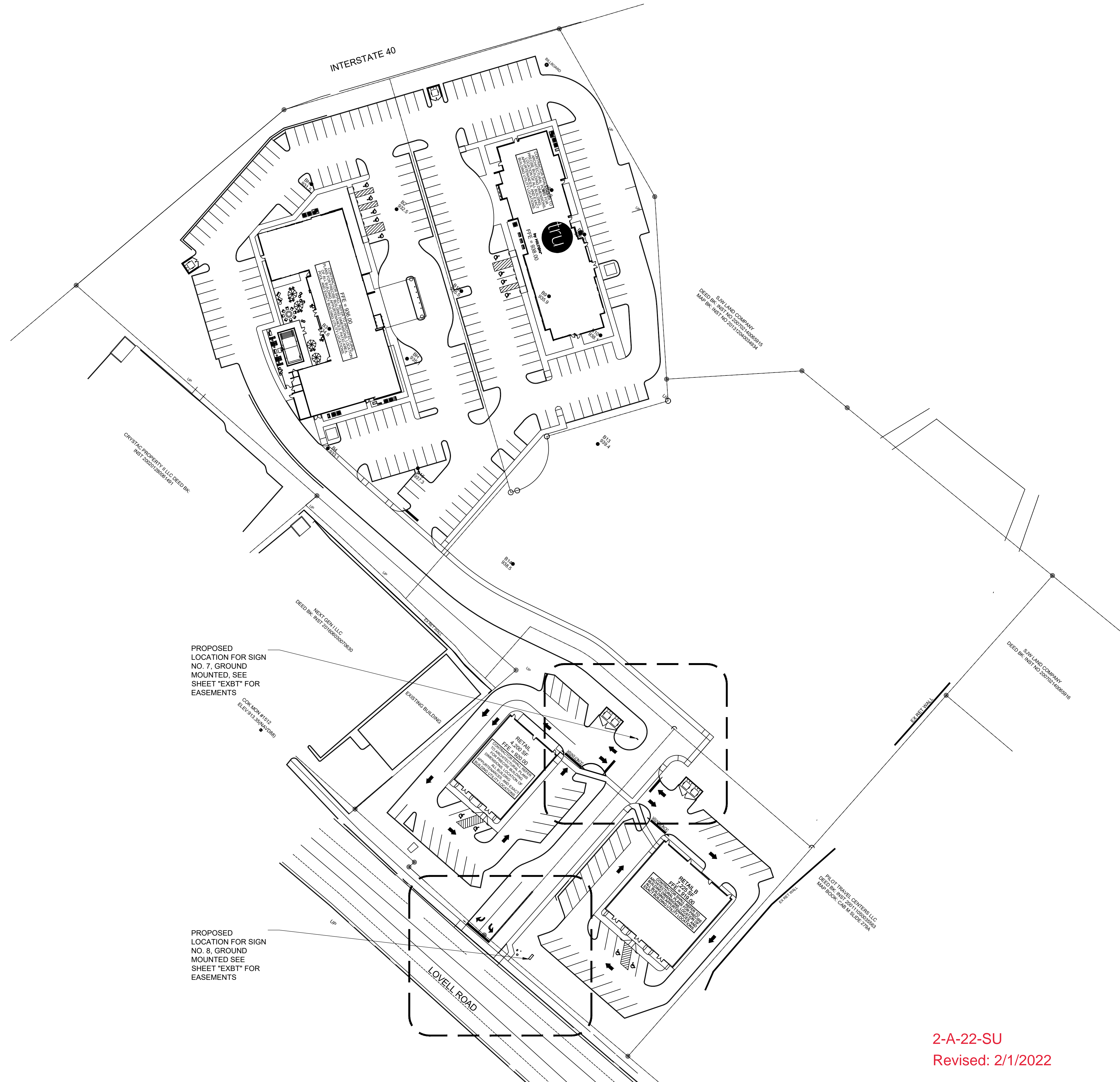
Aloft Hotel Signage
 364 Lovell Road, Knoxville, TN 37922
 Civil District No. 6 of Knox County, Tennessee
 Ward No. 47 of City of Knoxville -- City Block 46108

REVISIONS

NO.	DATE	COMMENTS

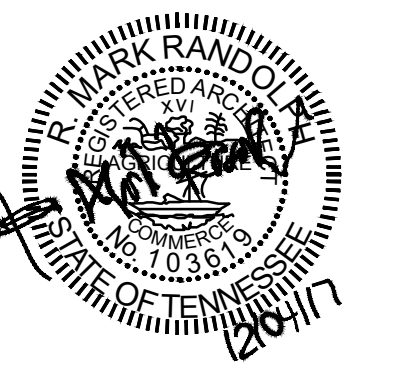
ORIGINAL ISSUE: 01/14/2022
 SITE PROJECT #: 1962
 FILE: 180215-SIGN EXBT

EXBT



**randolph
architecture**

9724 kingston pike
suite 305 B
knoxville, tn 37922
v: 865.357.3750
f: 865.357.3746



PERMIT
SET

2017_01

ALOFT HOTEL SIGNAGE
364 LOVELL ROAD
KNOXVILLE, TENNESSEE 37922

Issue Date 12-03-2021

Drawn Checked
HGB RMR

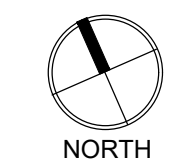
Revisions

2-A-22-SU
Revised: 2/1/2022

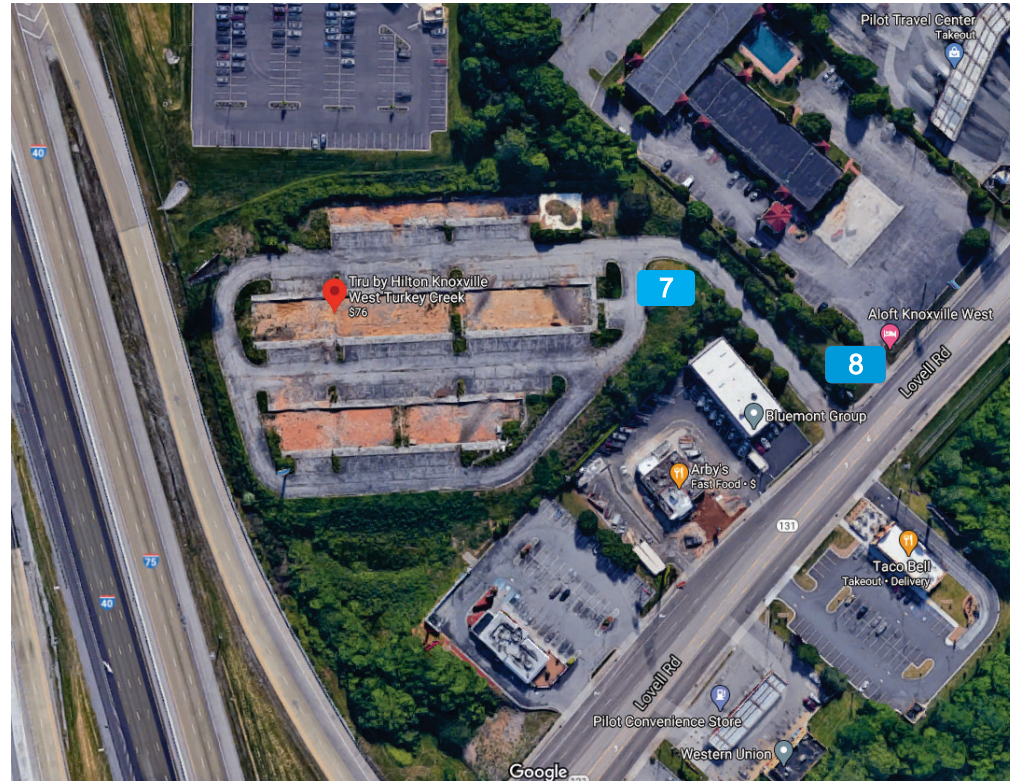
SIGNAGE PLAN

SCALE: 50'=1'-0"

1



c1.01
signage plan



SIGNAGE SPECIFICATIONS

PROPOSED

- 7** Sign Type B1 - Ground ID/Directional - Front Elevation 4.17 SQ. FT
- 8** MULTI TENANT MONOLITH

EXISTING

- 1** ILLUM. CHANNEL LETTERS
Manufacture and Install (1) set of Channel Letters 163.00 SF
- 2** CANOPY SIGN
Manufacture and Install (1) Canopy Sign 174.00 SF
- 3** WXYZ BAR SIGN
Manufacture and Install (1) Bar Sign 29.15 SF
- 4** ILLUM. CHANNEL LETTERS
Manufacture and Install (1) set of Channel Letters 163.00 SF
- 5** ILLUM. CHANNEL LETTERS
Manufacture and Install (1) set of Channel Letters 163.00 SF
- 6** ILLUM. CHANNEL LETTERS
Manufacture and Install (1) set of Channel Letters 163.00 SF

**SIGN ORDINANCE:
ALLOWANCE OF 10% OF THE PRIMARY AREA
OF THE FRONT ELEVATION**

2-A-22-SU
Revised: 2/1/2022



THIS IS AN ORIGINAL UNPUBLISHED DRAWING CREATED FOR YOUR PERSONAL USE IN CONNECTION WITH A PROJECT PLANNED FOR YOU BY CUMMINGS. IT IS NOT TO BE SHOWN OUTSIDE YOUR ORGANIZATION NOR USED, REPRODUCED, COPIED OR EXHIBITED IN ANY FASHION UNLESS AUTHORIZED IN WRITING BY AN OFFICER OF CUMMINGS.

CUSTOMER APPROVAL:

DATE: _____

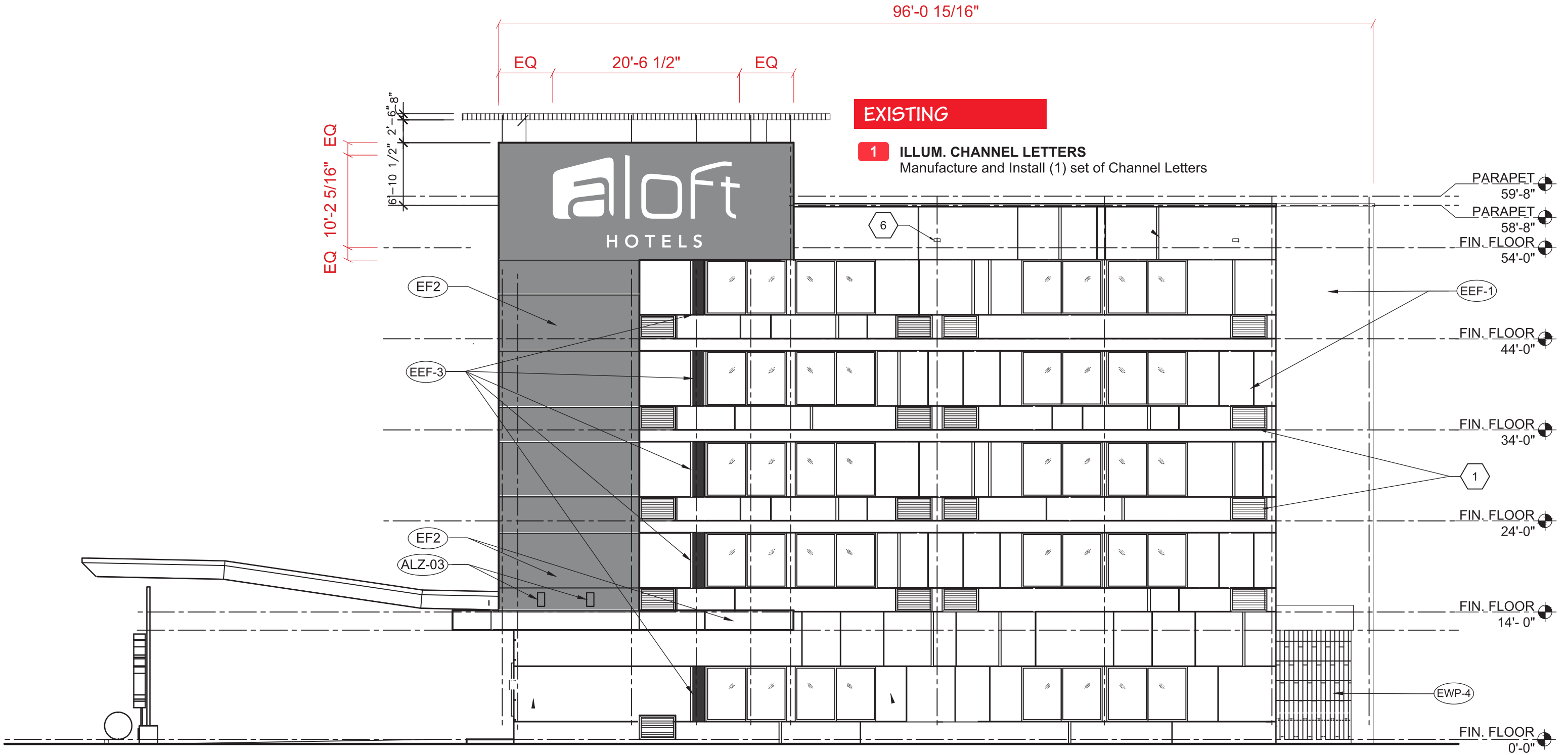
Rev. #	DATE	BY
Rev. #1	04-24-19	AAAJ
Rev. #2	09-18-19	AAAJ
Rev. #3	02-10-20	AAAJ

Rev. #	DATE	BY
Rev. #4	09-22-20	AAAJ
Rev. #5	09-30-20	AAAJ
Rev. #6	10-07-20	AAAJ

**ALOFT HOTEL
LOVELL POINTE/LOVELL ROAD
KNOXVILLE, TN**

**DRAWING NO:
D-ORDER #097355.13**

ARTIST: AAAJ DATE: 04-17-19
SHEET: 1 OF 13



NORTH ELEVATION @ ILLUMINATED CHANNEL LETTERS

Scale: 3/32" = 1'-0"

2-A-22-SU

Revised: 2/1/2022



THIS IS AN ORIGINAL UNPUBLISHED DRAWING CREATED FOR YOUR PERSONAL USE IN CONNECTION WITH A PROJECT PLANNED FOR YOU BY CUMMINGS. IT IS NOT TO BE SHOWN OUTSIDE YOUR ORGANIZATION NOR USED, REPRODUCED, COPIED OR EXHIBITED IN ANY FASHION UNLESS AUTHORIZED IN WRITING BY AN OFFICER OF CUMMINGS.

CUSTOMER APPROVAL:

DATE: _____

Rev. #	DATE	BY
Rev. #1	04-24-19	AAAJ
Rev. #2	09-18-19	AAAJ
Rev. #3	02-10-20	AAAJ

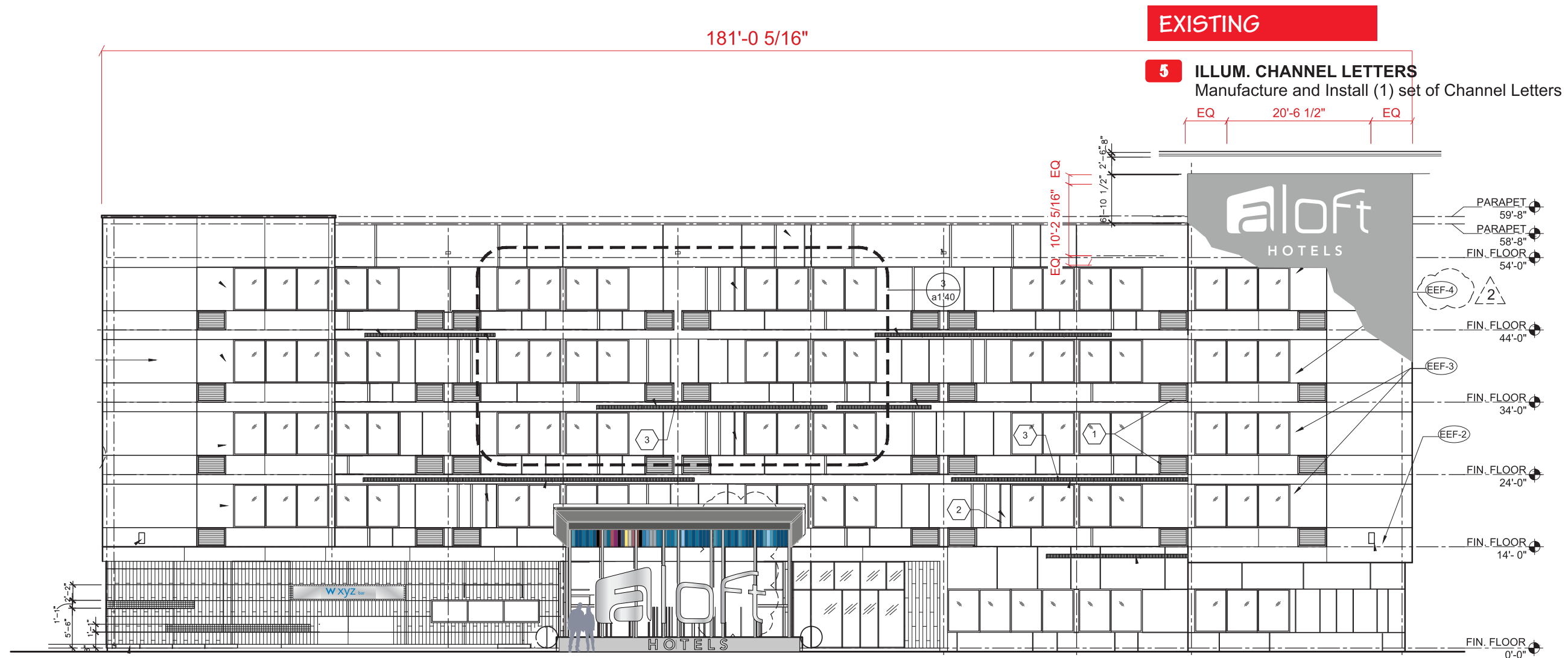
Rev. #	DATE	BY
Rev. #4	09-22-20	AAAJ
Rev. #5	09-30-20	AAAJ
Rev. #6	10-07-20	AAAJ

**ALOFT HOTEL
LOVELL POINTE/LOVELL ROAD
KNOXVILLE, TN**

**DRAWING NO:
D-ORDER #097355.14**

ARTIST: AAAJ DATE: 02-01-22
SHEET: 2 OF 13

THIS DESIGN REMAINS OUR EXCLUSIVE PROPERTY AND CANNOT BE DUPLICATED WITHOUT WRITTEN CONSENT



EXISTING

5 ILLUM. CHANNEL LETTERS
 Manufacture and Install (1) set of Channel Letters

EQ 20'-6 1/2" EQ

EQ 10'-2 5/16" EQ

EXISTING

3 WXYZ BAR SIGN
 Manufacture and Install (1) Bar Sign

EXISTING

2 CANOPY SIGN
 Manufacture and Install (1) Canopy Sign

EAST ELEVATION @ ILLUMINATED CHANNEL LETTERS

Scale: 3/32" = 1'-0"

2-A-22-SU
 Revised: 2/1/2022



THIS IS AN ORIGINAL UNPUBLISHED DRAWING CREATED FOR YOUR PERSONAL USE IN CONNECTION WITH A PROJECT PLANNED FOR YOU BY CUMMINGS. IT IS NOT TO BE SHOWN OUTSIDE YOUR ORGANIZATION NOR USED, REPRODUCED, COPIED OR EXHIBITED IN ANY FASHION UNLESS AUTHORIZED IN WRITING BY AN OFFICER OF CUMMINGS.

CUSTOMER APPROVAL:

DATE: _____

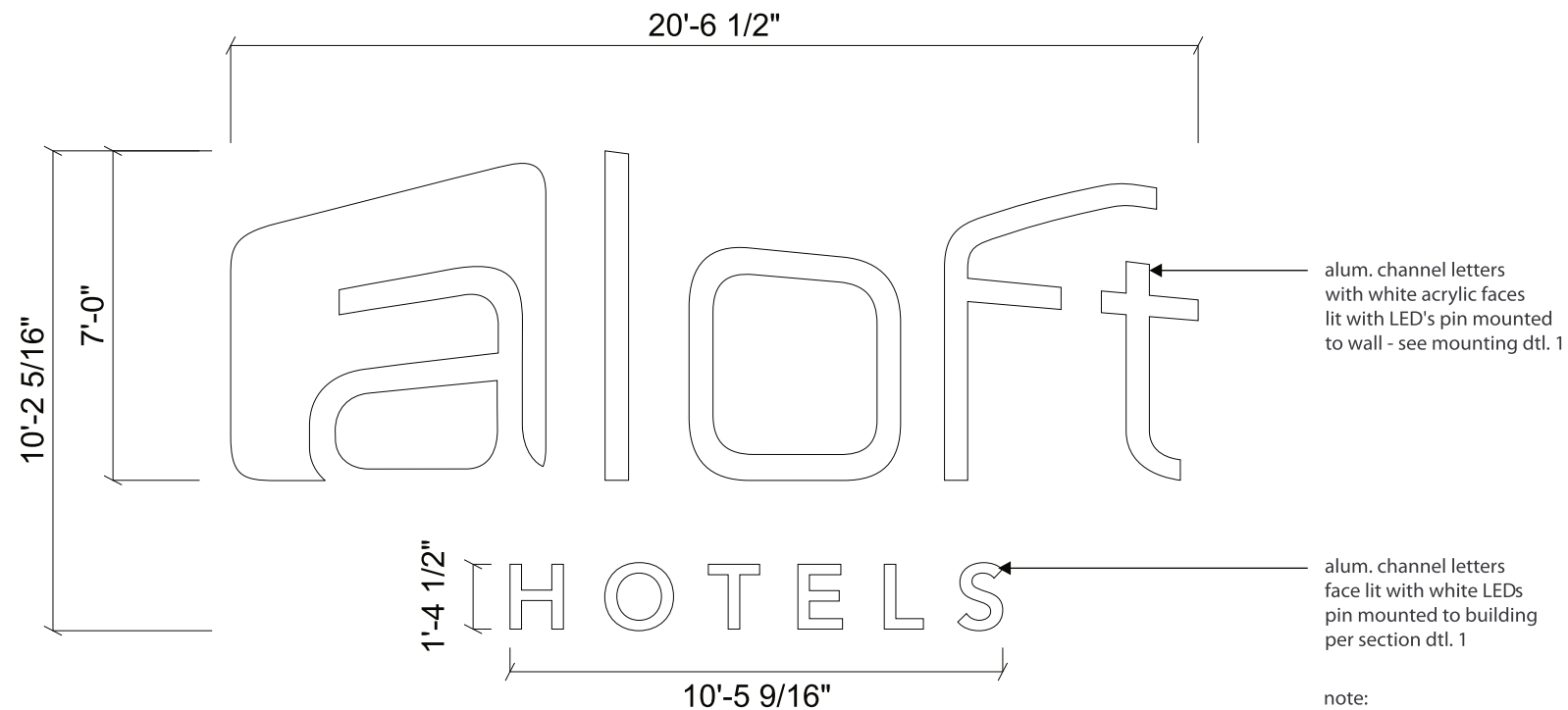
Rev. #	DATE	BY
Rev. #1	04-24-19	AAAJ
Rev. #2	09-18-19	AAAJ
Rev. #3	02-10-20	AAAJ

Rev. #	DATE	BY
Rev. #4	09-22-20	AAAJ
Rev. #5	09-30-20	AAAJ
Rev. #6	10-07-20	AAAJ

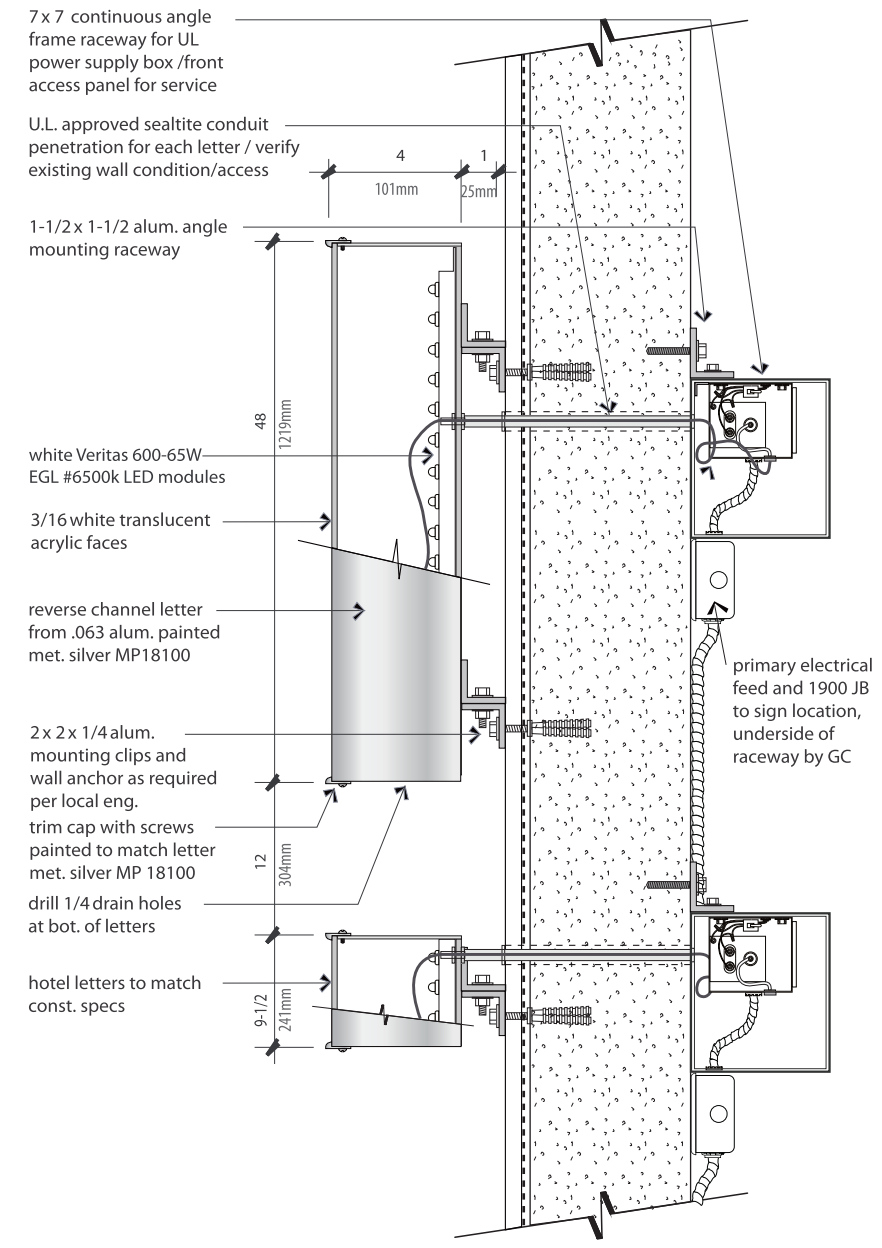
ALOFT HOTEL
LOVELL POINTE/LOVELL ROAD
KNOXVILLE, TN

DRAWING NO: D-ORDER #097355.14	
ARTIST: AAAJ	DATE: 02-01-22
SHEET: 3 OF 13	

THIS DESIGN REMAINS OUR EXCLUSIVE PROPERTY AND CANNOT BE DUPLICATED WITHOUT WRITTEN CONSENT



NOTE:
All signage sizes, subject to local zoning requirements for the property and possible field conditions affecting locations



EXISTING

1 ILLUM. CHANNEL LETTERS
Manufacture and Install (1) set of Channel Letters **163.00 SF**

EXISTING

5 ILLUM. CHANNEL LETTERS
Manufacture and Install (1) set of Channel Letters **163.00 SF**

alum. channel letters with white acrylic faces lit with LED's pin mounted to wall - see mounting dtl. 1

alum. channel letters face lit with white LEDs pin mounted to building per section dtl. 1

note:
HOTEL letters are not centered to ALOFT letters using standard mounting pattern will ensure proper alignment

GC to provide adequate blocking within or behind wall if required to support sign mounting.

proposed sign area aloft **143.79 SF**

proposed sign area hotels **15.13 SF**

Sign Type A1.2 - Section 1
Building Sign - End View

2-A-22-SU
Revised: 2/1/2022



THIS IS AN ORIGINAL UNPUBLISHED DRAWING CREATED FOR YOUR PERSONAL USE IN CONNECTION WITH A PROJECT PLANNED FOR YOU BY CUMMINGS. IT IS NOT TO BE SHOWN OUTSIDE YOUR ORGANIZATION NOR USED, REPRODUCED, COPIED OR EXHIBITED IN ANY FASHION UNLESS AUTHORIZED IN WRITING BY AN OFFICER OF CUMMINGS.

CUSTOMER APPROVAL:

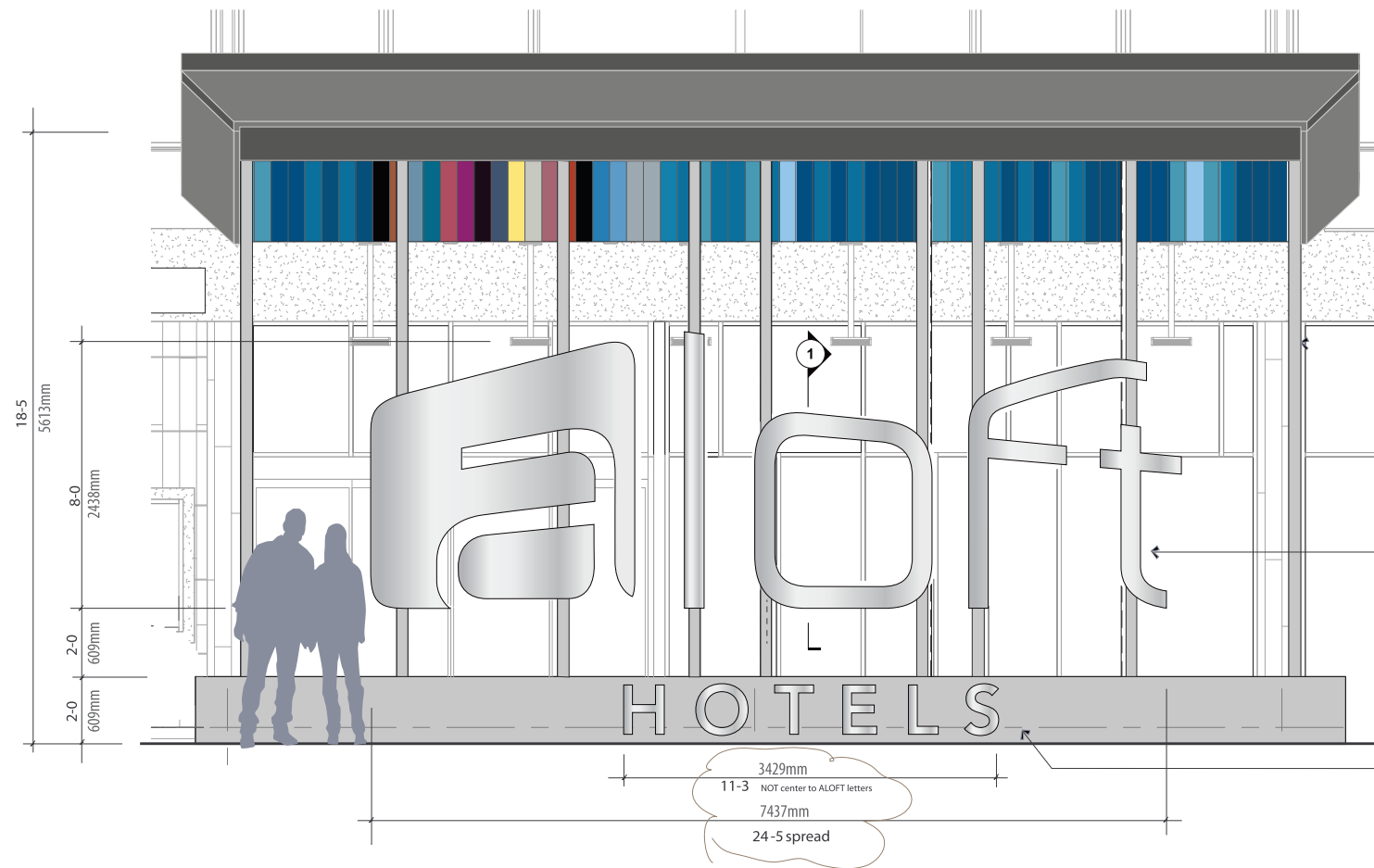
DATE: _____

Rev. #	DATE	BY
Rev. #1	04-24-19	AAAJ
Rev. #2	09-18-19	AAAJ
Rev. #3	02-10-20	AAAJ

Rev. #	DATE	BY
Rev. #4	09-22-20	AAAJ
Rev. #5	09-30-20	AAAJ
Rev. #6	10-07-20	AAAJ

ALOFT HOTEL
LOVELL POINTE/LOVELL ROAD
KNOXVILLE, TN

DRAWING NO:
D-ORDER #097355.14
ARTIST: AAAJ DATE: 02-01-22
SHEET: 4 OF 13



NOTE:
All signage sizes, subject to local zoning requirements for the property and possible field conditions affecting locations

canopy structure steel tubing frame system for sign support by GC - see arch./eng. dwgs. for details

8-0 x 24 deep reverse channel letters welded freestanding on structural tubing with welded plates secured to base footing- typ. all paint fin. MP18100 silvergray met.

18 reverse channel alum. letters with closed backs pin mounted to concrete base using 1/4 threaded pins; paint MP18100s ilvergray met.

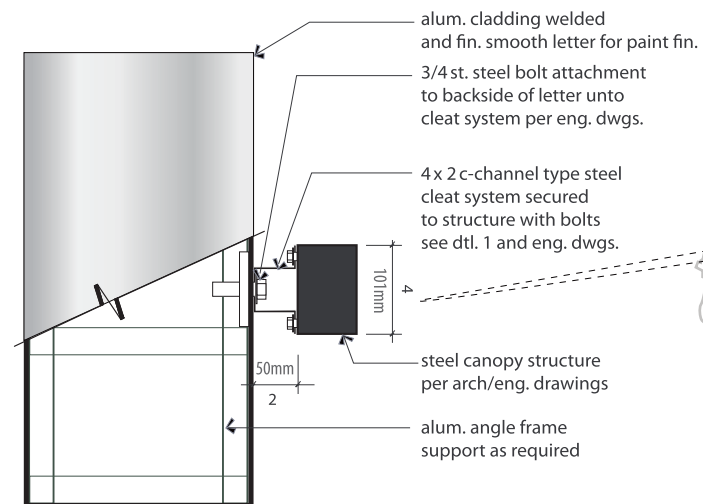
Sign Type A3 - Monument ID - Front Elevation

qty: 1 required

proposed combined sign area

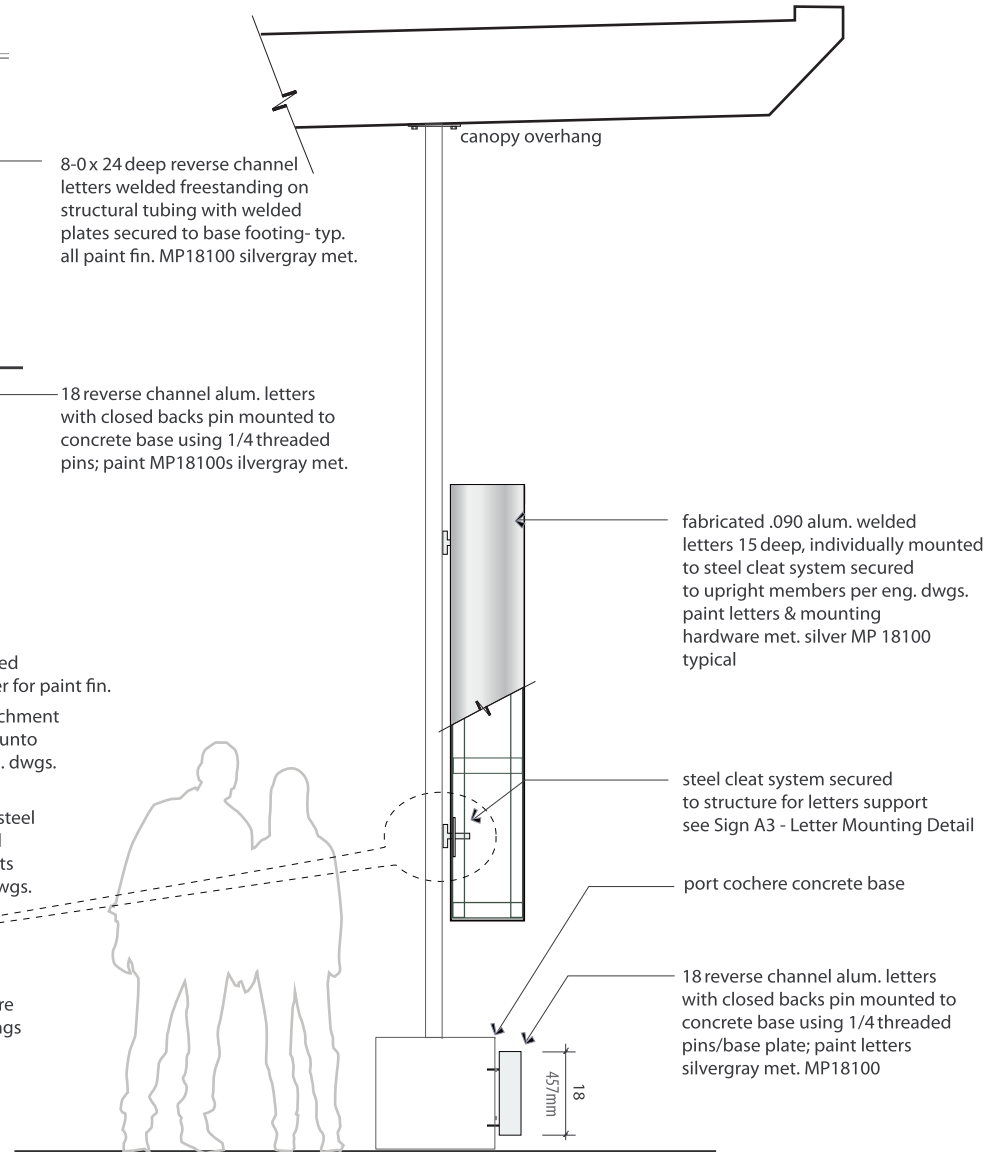
174 sf

Scale: 3/16" = 1'-0"



Sign A3 - Letter Mounting Dtl. - Plan View

typical for each letter



Sign Type A3 - Setion 1 End View

2-A-22-SU
Revised: 2/1/2022



THIS IS AN ORIGINAL UNPUBLISHED DRAWING CREATED FOR YOUR PERSONAL USE IN CONNECTION WITH A PROJECT PLANNED FOR YOU BY CUMMINGS. IT IS NOT TO BE SHOWN OUTSIDE YOUR ORGANIZATION NOR USED, REPRODUCED, COPIED OR EXHIBITED IN ANY FASHION UNLESS AUTHORIZED IN WRITING BY AN OFFICER OF CUMMINGS.

CUSTOMER APPROVAL:

DATE:

Rev. #	DATE	BY
Rev. #1	04-24-19	AAAJ
Rev. #2	09-18-19	AAAJ
Rev. #3	02-10-20	AAAJ

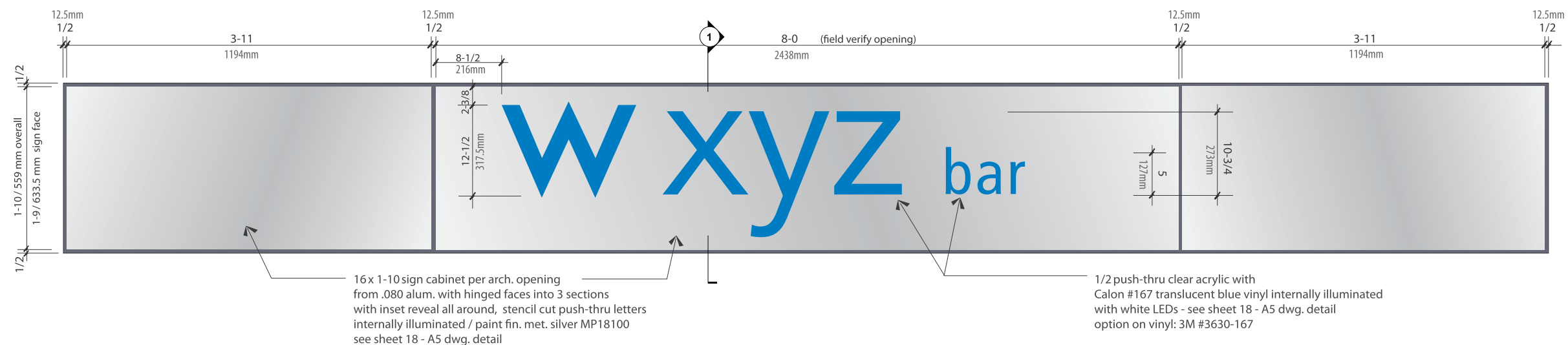
Rev. #	DATE	BY
Rev. #4	09-22-20	AAAJ
Rev. #5	09-30-20	AAAJ
Rev. #6	10-07-20	AAAJ

ALOFT HOTEL
LOVELL POINTE/LOVELL ROAD
KNOXVILLE, TN

DRAWING NO:
D-ORDER #097355.14

ARTIST: AAAJ DATE: 02-01-22
SHEET: OF 13

THIS DESIGN REMAINS OUR EXCLUSIVE PROPERTY AND CANNOT BE DUPLICATED WITHOUT WRITTEN CONSENT



NOTE: SEE SPECIFICATIONS ON NEXT PAGE

Type A5 - Wxyz Sign - Front Elevation Detail

Scale 3/4" = 1'-0" **29.15 SQ. FT.**

EXISTING

3 WXYZ BAR SIGN
Manufacture and Install (1) Bar Sign

29.15 SF

2-A-22-SU
Revised: 2/1/2022



THIS IS AN ORIGINAL UNPUBLISHED DRAWING CREATED FOR YOUR PERSONAL USE IN CONNECTION WITH A PROJECT PLANNED FOR YOU BY CUMMINGS. IT IS NOT TO BE SHOWN OUTSIDE YOUR ORGANIZATION NOR USED, REPRODUCED, COPIED OR EXHIBITED IN ANY FASHION UNLESS AUTHORIZED IN WRITING BY AN OFFICER OF CUMMINGS.

CUSTOMER APPROVAL:

DATE: _____

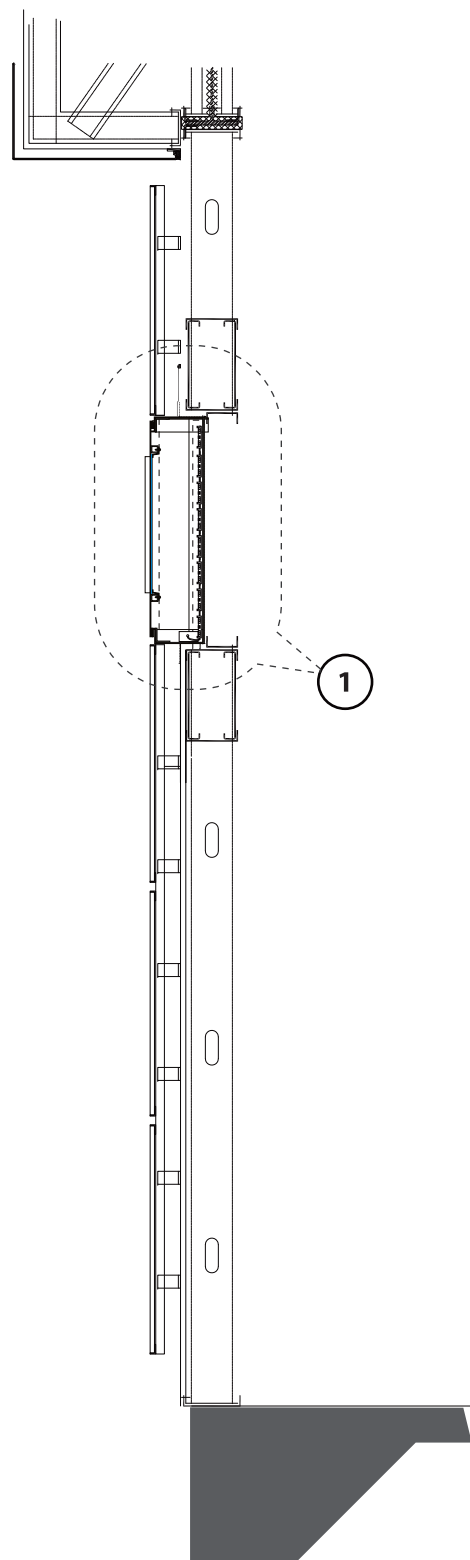
Rev. #	DATE	BY
Rev. #1	04-24-19	AAAJ
Rev. #2	09-18-19	AAAJ
Rev. #3	02-10-20	AAAJ

Rev. #	DATE	BY
Rev. #4	09-22-20	AAAJ
Rev. #5	09-30-20	AAAJ
Rev. #6	10-07-20	AAAJ

ALOFT HOTEL
LOVELL POINTE/LOVELL ROAD
KNOXVILLE, TN

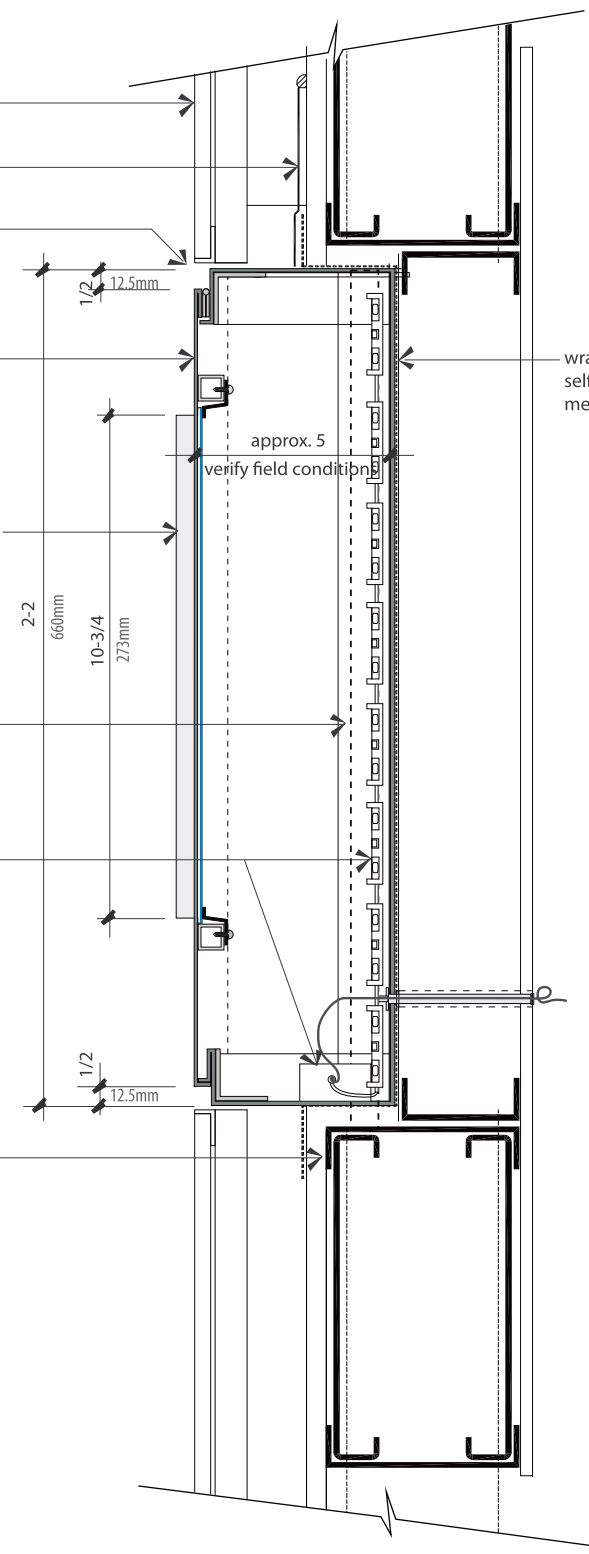
DRAWING NO:
D-ORDER #097355.14

ARTIST: AAAJ DATE: 02-01-22
SHEET: 6 OF 13



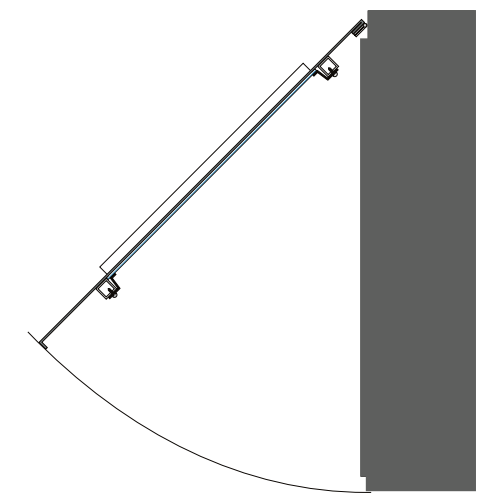
1

- prodema panel system per arch. dwgs.
- counter flashing membrane
- allow 1/2 border reveal on face for proper hinge action and water retainer
- 16-0x 2-2 sign cabinet .080 alum. hinged sign panel face welded to angle frame and stencil cut face for individual letters paint fin. met. silver MP18100
- 1/2 push-thru clear acrylic with Calon #167 translucent blue vinyl backing option on vinyl: 3M #3630-167
- 1-1/2 angle frame welded sign cabinet to fit in recessed area - field verify for proper depth
- UL approved white Veritas 600-65W EGL #6500k LED modules or equal - with power supplies EG to provide primary power source to location for hook up per local code
- metal studs/ built-up headers frame into wall per arch. dwgs.



NOTE:
All signage sizes, subject to local zoning requirements for the property and possible field conditions affecting locations

wrap wall recess with self-adhesive water proofing membrane - by others



Open Sign Face

Type A5 - Wxyz Sign Mounting Dtl. - Section 1

qty: 1 required

Wxyz Sign at Wall Opening - Section

2-A-22-SU
Revised: 2/1/2022



THIS IS AN ORIGINAL UNPUBLISHED DRAWING CREATED FOR YOUR PERSONAL USE IN CONNECTION WITH A PROJECT PLANNED FOR YOU BY CUMMINGS. IT IS NOT TO BE SHOWN OUTSIDE YOUR ORGANIZATION NOR USED, REPRODUCED, COPIED OR EXHIBITED IN ANY FASHION UNLESS AUTHORIZED IN WRITING BY AN OFFICER OF CUMMINGS.

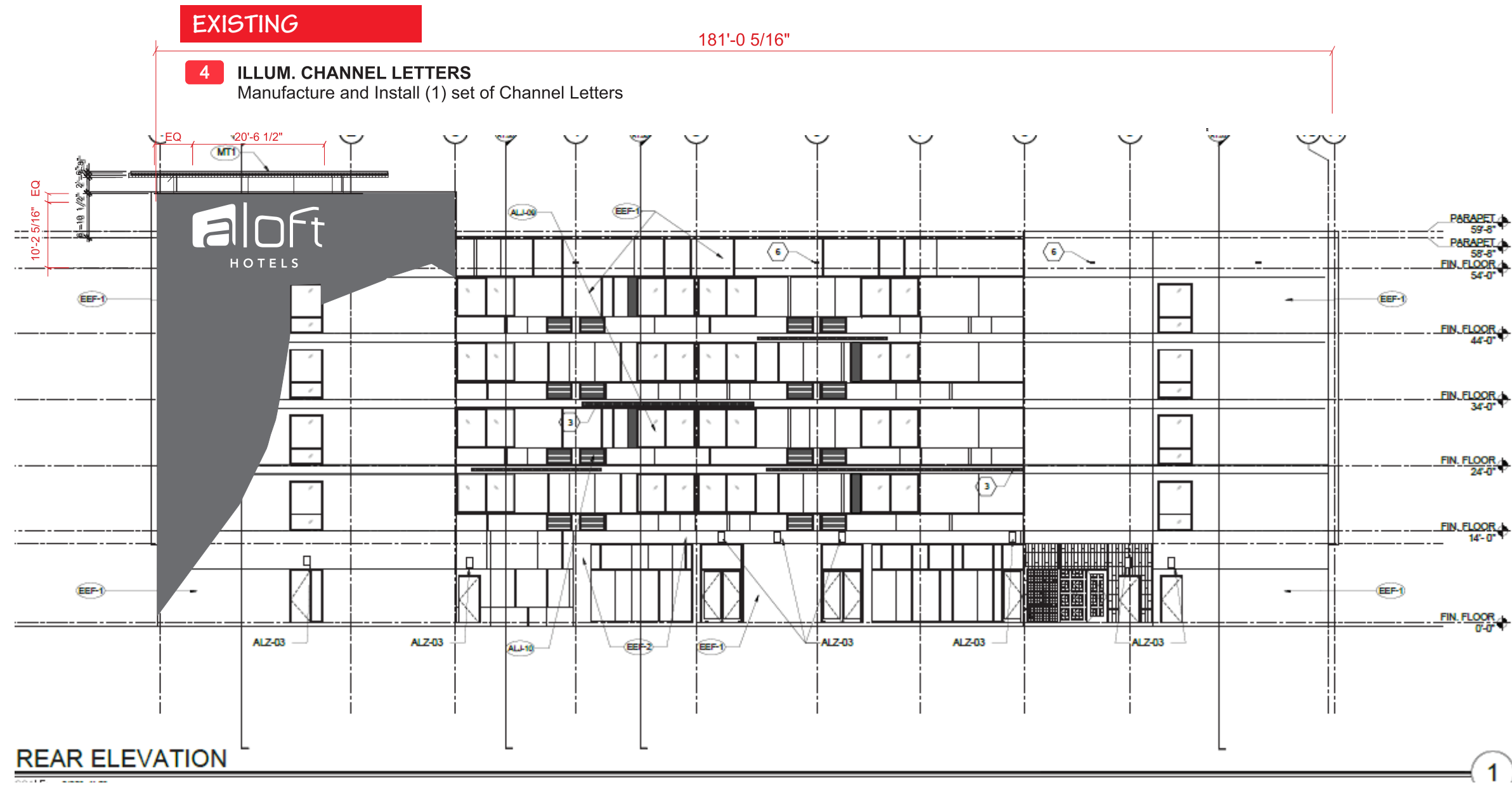
CUSTOMER APPROVAL: _____
DATE: _____

Rev. #	DATE	BY	Rev. #	DATE	BY
Rev. #1	04-24-19	AAAJ	Rev. #4	09-22-20	AAAJ
Rev. #2	09-18-19	AAAJ	Rev. #5	09-30-20	AAAJ
Rev. #3	02-10-20	AAAJ	Rev. #6	10-07-20	AAAJ

ALOFT HOTEL
LOVELL POINTE/LOVELL ROAD
KNOXVILLE, TN

DRAWING NO:
D-ORDER #097355.14
ARTIST: AAAJ DATE: 02-01-22
SHEET: 7 OF 13

THIS DESIGN REMAINS OUR EXCLUSIVE PROPERTY AND CANNOT BE DUPLICATED WITHOUT WRITTEN CONSENT



REAR ELEVATION

1

2-A-22-SU
Revised: 2/1/2022



THIS IS AN ORIGINAL UNPUBLISHED DRAWING CREATED FOR YOUR PERSONAL USE IN CONNECTION WITH A PROJECT PLANNED FOR YOU BY CUMMINGS. IT IS NOT TO BE SHOWN OUTSIDE YOUR ORGANIZATION NOR USED, REPRODUCED, COPIED OR EXHIBITED IN ANY FASHION UNLESS AUTHORIZED IN WRITING BY AN OFFICER OF CUMMINGS.

CUSTOMER APPROVAL:

DATE: _____

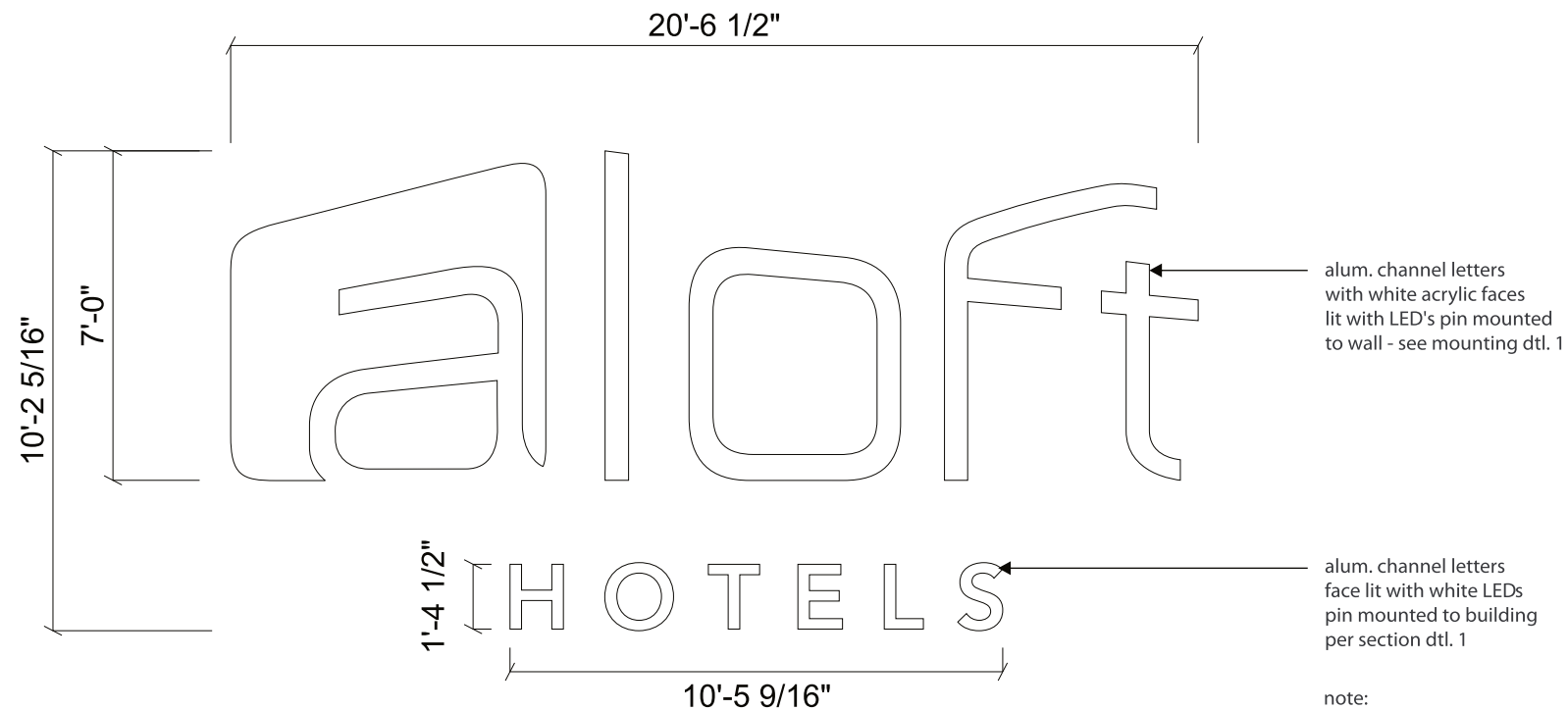
Rev. #	DATE	BY
Rev. #1	04-24-19	AAAJ
Rev. #2	09-18-19	AAAJ
Rev. #3	02-10-20	AAAJ

Rev. #	DATE	BY
Rev. #4	09-22-20	AAAJ
Rev. #5	09-30-20	AAAJ
Rev. #6	10-07-20	AAAJ

ALOFT HOTEL
LOVELL POINTE/LOVELL ROAD
KNOXVILLE, TN

DRAWING NO:
D-ORDER #097355.14
ARTIST: AAAJ DATE: 02-01-22
SHEET: 8 OF 13

THIS DESIGN REMAINS OUR EXCLUSIVE PROPERTY AND CANNOT BE DUPLICATED WITHOUT WRITTEN CONSENT



alum. channel letters with white acrylic faces lit with LED's pin mounted to wall - see mounting dtl. 1

alum. channel letters face lit with white LEDs pin mounted to building per section dtl. 1

note:
HOTEL letters are not centered to ALOFT letters using standard mounting pattern will ensure proper alignment

GC to provide adequate blocking within or behind wall if required to support sign mounting.

Sign Type A1.2 - Building Sign - Elevation

Scale: 1/4" = 1'-0"

EXISTING

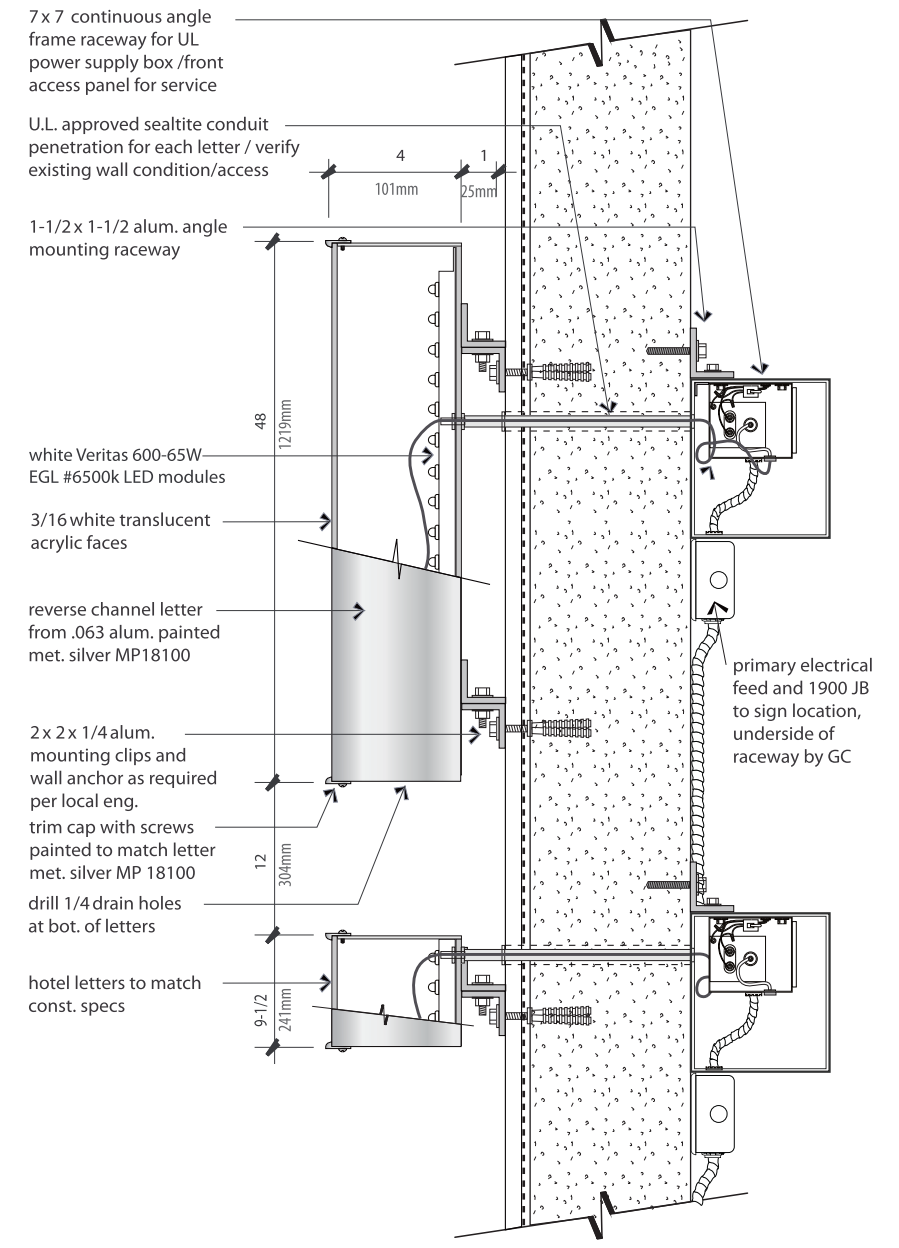
4 ILLUM. CHANNEL LETTERS
Manufacture and Install (1) set of Channel Letters **163.00 SF**

proposed sign area aloft **143.79 SF**

proposed sign area hotels **15.13 SF**

total sign area proposed **162.93 SF**

NOTE:
All signage sizes, subject to local zoning requirements for the property and possible field conditions affecting locations



Sign Type A1.2 - Section 1 Building Sign - End View

2-A-22-SU
Revised: 2/1/2022



THIS IS AN ORIGINAL UNPUBLISHED DRAWING CREATED FOR YOUR PERSONAL USE IN CONNECTION WITH A PROJECT PLANNED FOR YOU BY CUMMINGS. IT IS NOT TO BE SHOWN OUTSIDE YOUR ORGANIZATION NOR USED, REPRODUCED, COPIED OR EXHIBITED IN ANY FASHION UNLESS AUTHORIZED IN WRITING BY AN OFFICER OF CUMMINGS.

CUSTOMER APPROVAL:

DATE: _____

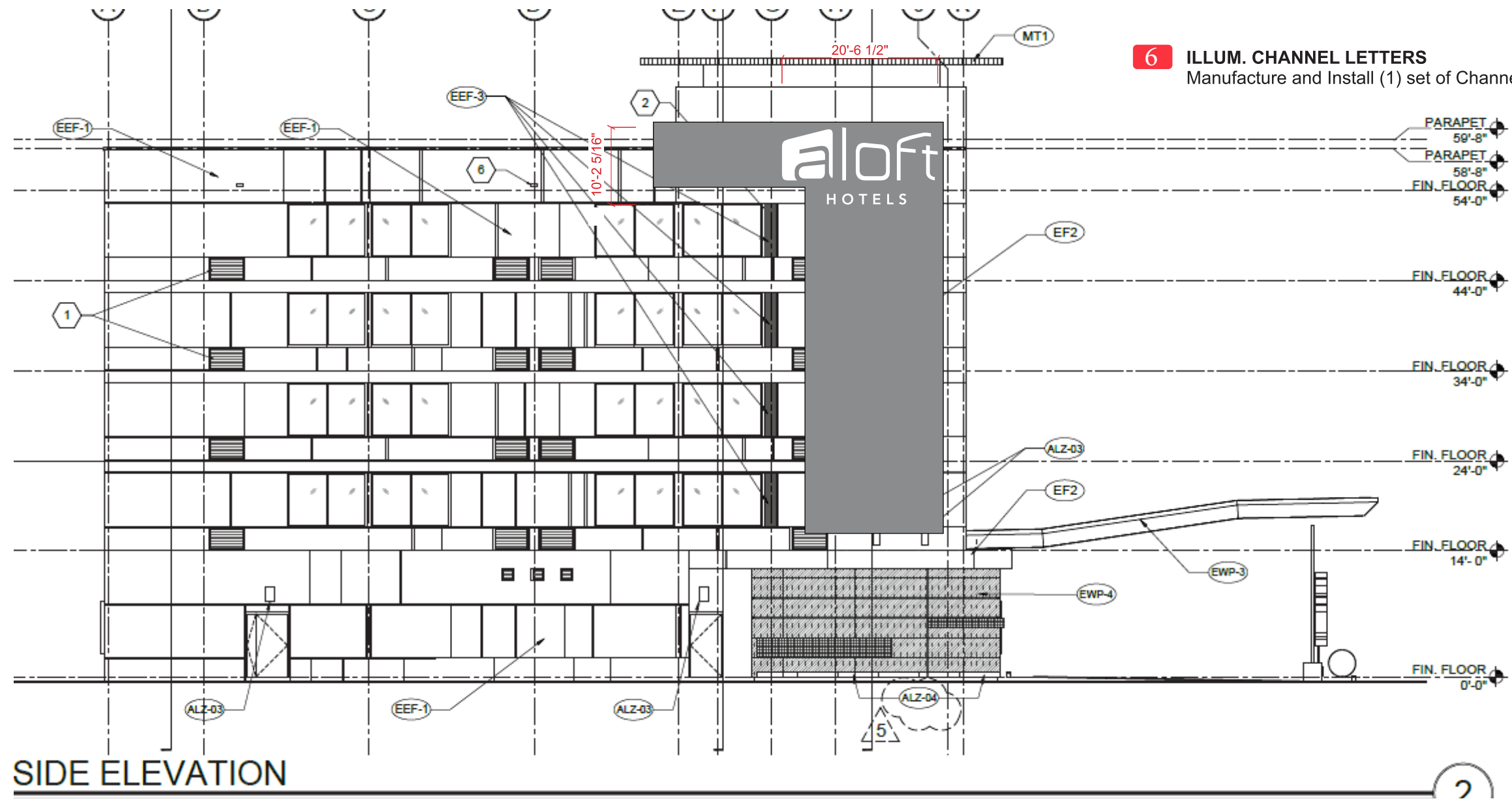
Rev. #	DATE	BY	Rev. #	DATE	BY
Rev. #1	04-24-19	AAAJ	Rev. #4	09-22-20	AAAJ
Rev. #2	09-18-19	AAAJ	Rev. #5	09-30-20	AAAJ
Rev. #3	02-10-20	AAAJ	Rev. #6	10-07-20	AAAJ

ALOFT HOTEL
LOVELL POINTE/LOVELL ROAD
KNOXVILLE, TN

DRAWING NO:
D-ORDER #097355.14
ARTIST: AAAJ DATE: 02-01-22
SHEET: 9 OF 13

THIS DESIGN REMAINS OUR EXCLUSIVE PROPERTY AND CANNOT BE DUPLICATED WITHOUT WRITTEN CONSENT

EXISTING



6 ILLUM. CHANNEL LETTERS
 Manufacture and Install (1) set of Channel Letters **163.00 SF**

SIDE ELEVATION

2

2-A-22-SU
 Revised: 2/1/2022



THIS IS AN ORIGINAL UNPUBLISHED DRAWING CREATED FOR YOUR PERSONAL USE IN CONNECTION WITH A PROJECT PLANNED FOR YOU BY CUMMINGS. IT IS NOT TO BE SHOWN OUTSIDE YOUR ORGANIZATION NOR USED, REPRODUCED, COPIED OR EXHIBITED IN ANY FASHION UNLESS AUTHORIZED IN WRITING BY AN OFFICER OF CUMMINGS.

CUSTOMER APPROVAL:

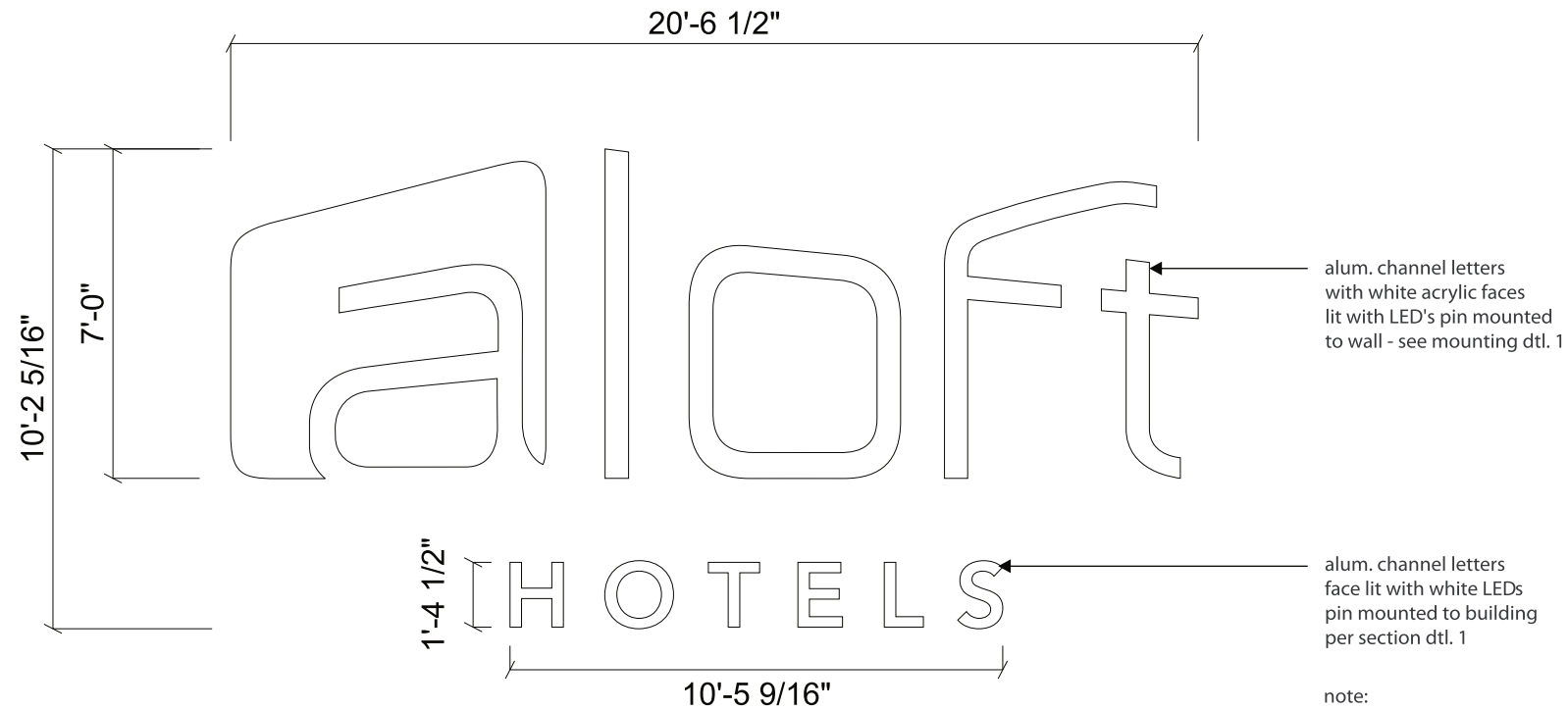
 DATE: _____

Rev. #	DATE	BY	Rev. #	DATE	BY
Rev. #1	04-24-19	AAAJ	Rev. #4	09-22-20	AAAJ
Rev. #2	09-18-19	AAAJ	Rev. #5	09-30-20	AAAJ
Rev. #3	02-10-20	AAAJ	Rev. #6	10-07-20	AAAJ

ALOFT HOTEL
LOVELL POINTE/LOVELL ROAD
KNOXVILLE, TN

DRAWING NO:
D-ORDER #097355.13
 ARTIST: AAAJ DATE: 04-17-19
 SHEET: 10 OF 13

THIS DESIGN REMAINS OUR EXCLUSIVE PROPERTY AND CANNOT BE DUPLICATED WITHOUT WRITTEN CONSENT



EXISTING

6 ILLUM. CHANNEL LETTERS
 Manufacture and Install (1) set of Channel Letters **163.00 SF**

alum. channel letters with white acrylic faces lit with LED's pin mounted to wall - see mounting dtl. 1

alum. channel letters face lit with white LEDs pin mounted to building per section dtl. 1

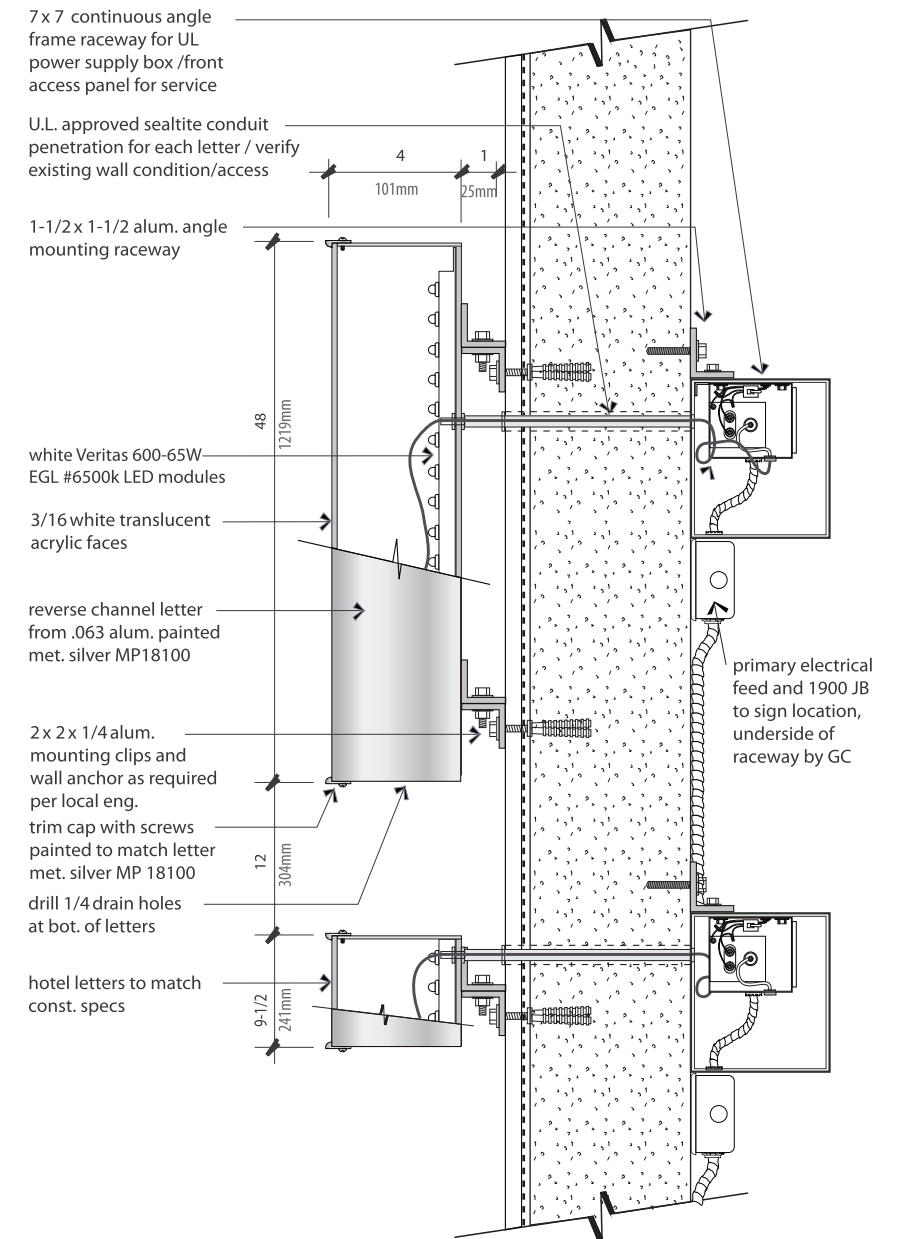
note:
 HOTEL letters are not centered to ALOFT letters using standard mounting pattern will ensure proper alignment

GC to provide adequate blocking within or behind wall if required to support sign mounting.

proposed sign area aloft 143.79 SF

proposed sign area hotels 15.13 SF

NOTE:
 All signage sizes, subject to local zoning requirements for the property and possible field conditions affecting locations



**Sign Type A1.2 - Section 1
 Building Sign - End View**

2-A-22-SU
Revised: 2/1/2022



THIS IS AN ORIGINAL UNPUBLISHED DRAWING CREATED FOR YOUR PERSONAL USE IN CONNECTION WITH A PROJECT PLANNED FOR YOU BY CUMMINGS. IT IS NOT TO BE SHOWN OUTSIDE YOUR ORGANIZATION NOR USED, REPRODUCED, COPIED OR EXHIBITED IN ANY FASHION UNLESS AUTHORIZED IN WRITING BY AN OFFICER OF CUMMINGS.

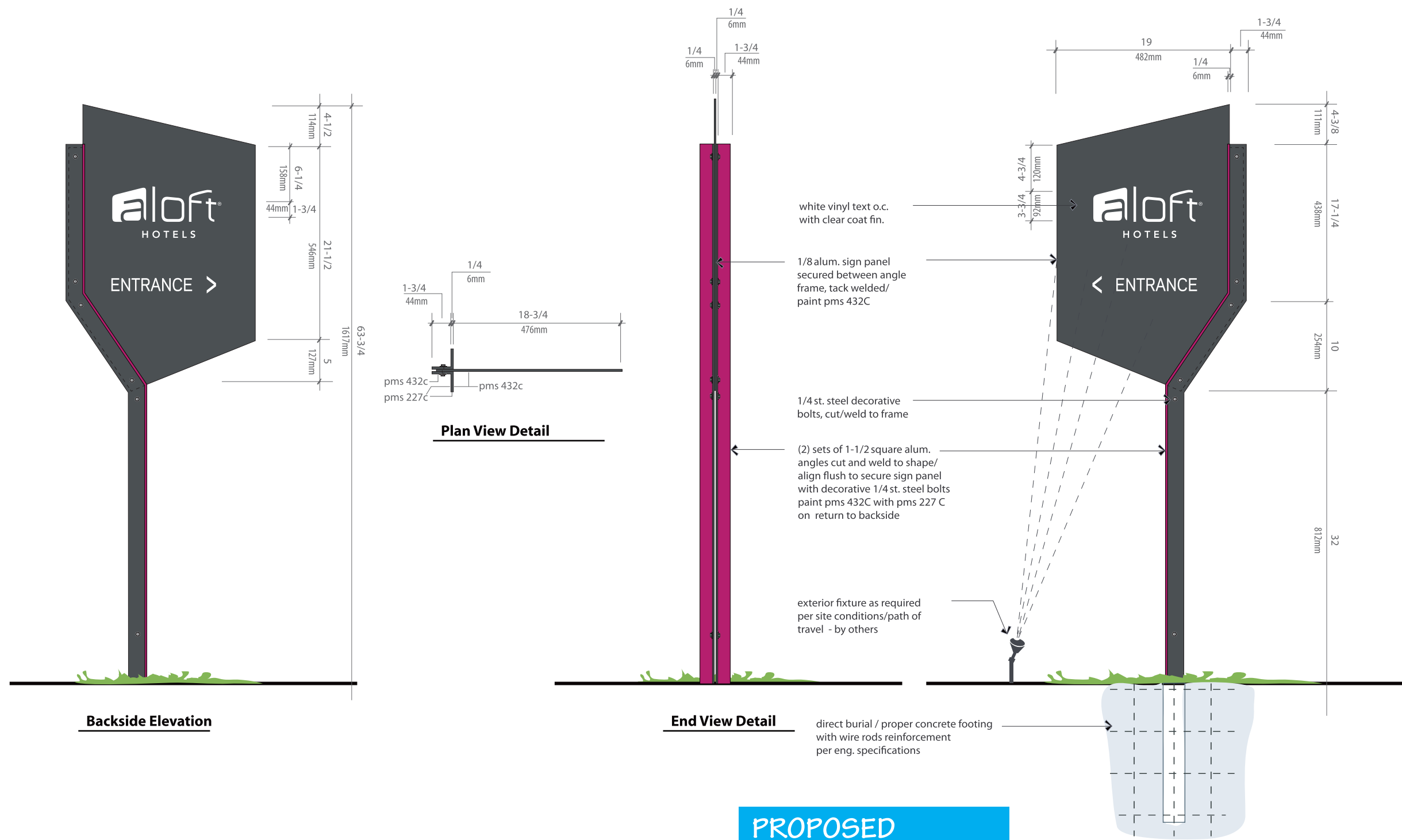
CUSTOMER APPROVAL: _____
 DATE: _____

Rev. #	DATE	BY	Rev. #	DATE	BY
Rev. #1	04-24-19	AAAJ	Rev. #4	09-22-20	AAAJ
Rev. #2	09-18-19	AAAJ	Rev. #5	09-30-20	AAAJ
Rev. #3	02-10-20	AAAJ	Rev. #6	10-07-20	AAAJ

ALOFT HOTEL
LOVELL POINTE/LOVELL ROAD
KNOXVILLE, TN

DRAWING NO:
D-ORDER #097355.13
 ARTIST: AAAJ DATE: 04-17-19
 SHEET: 11 OF 13

THIS DESIGN REMAINS OUR EXCLUSIVE PROPERTY AND CANNOT BE DUPLICATED WITHOUT WRITTEN CONSENT



PROPOSED

7 Sign Type B1 - Ground ID/Directional - Front Elevation
 SCALE: 3/4" = 1'-0"

4.17 SQ. FT.

2-A-22-SU
 Revised: 2/1/2022



THIS IS AN ORIGINAL UNPUBLISHED DRAWING CREATED FOR YOUR PERSONAL USE IN CONNECTION WITH A PROJECT PLANNED FOR YOU BY CUMMINGS. IT IS NOT TO BE SHOWN OUTSIDE YOUR ORGANIZATION NOR USED, REPRODUCED, COPIED OR EXHIBITED IN ANY FASHION UNLESS AUTHORIZED IN WRITING BY AN OFFICER OF CUMMINGS.

CUSTOMER APPROVAL:

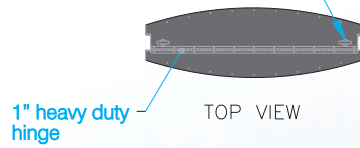
 DATE: _____

DATE	BY	DATE	BY
Rev. #1 04-24-19	AAAJ	Rev. #4 09-22-20	AAAJ
Rev. #2 09-18-19	AAAJ	Rev. #5 09-30-20	AAAJ
Rev. #3 02-10-20	AAAJ	Rev. #6 10-07-20	AAAJ

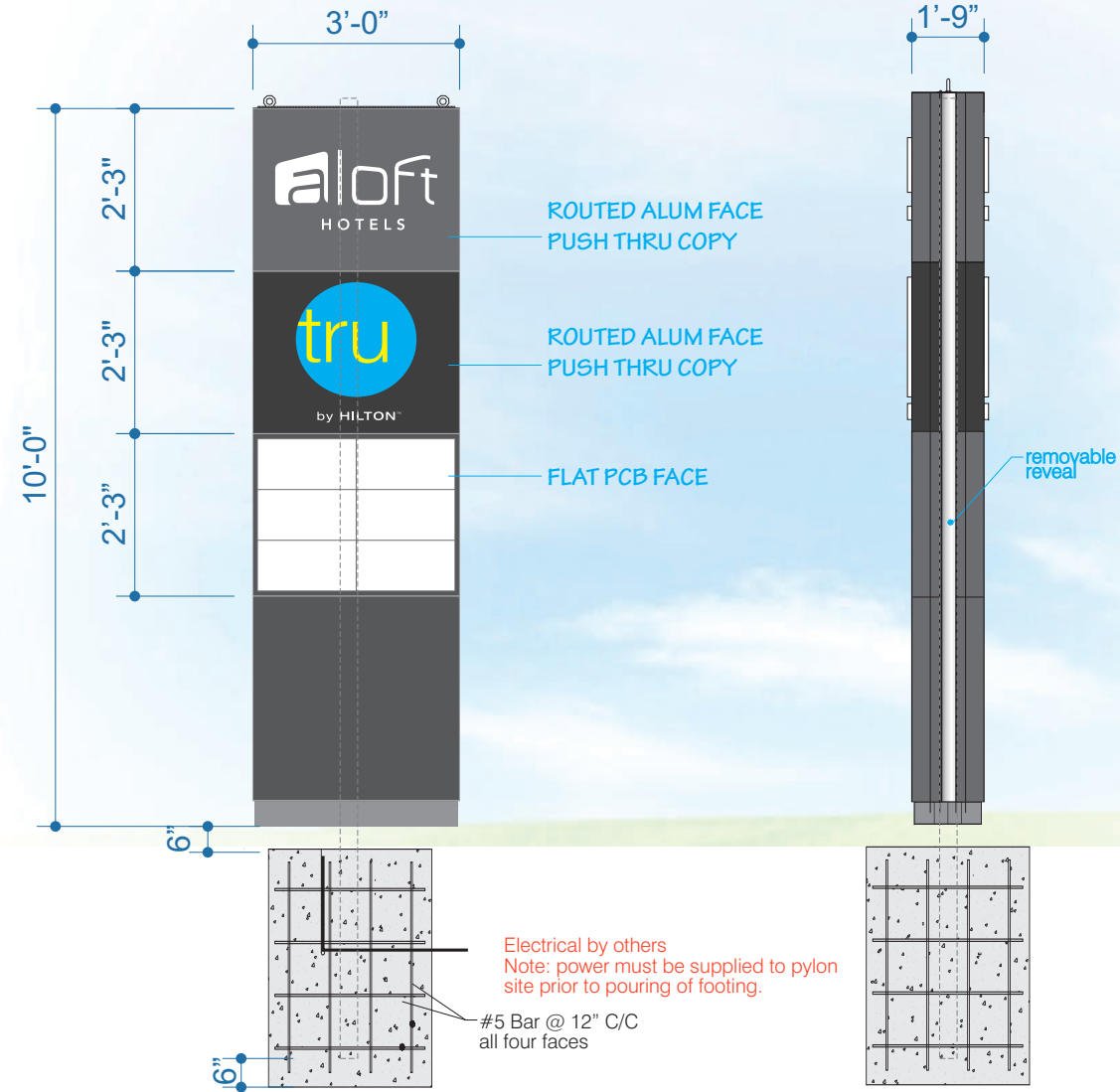
ALOFT HOTEL
LOVELL POINTE/LOVELL ROAD
KNOXVILLE, TN

DRAWING NO:
D-ORDER #097355.14
 ARTIST: AAAJ DATE: 02-01-22
 SHEET: 12 OF 13

1" eyebolt to be removed and replaced with bolts once sign is installed



Total Amps: 2.80
 Number of Circuits: 1-20 amp
 Volts: 120
 Estimated Crated Weight: 1,760.20 lbs



PROPOSED

8 MULTI TENANT MONOLITH

2-A-22-SU
 Revised: 2/1/2022



THIS IS AN ORIGINAL UNPUBLISHED DRAWING CREATED FOR YOUR PERSONAL USE IN CONNECTION WITH A PROJECT PLANNED FOR YOU BY CUMMINGS. IT IS NOT TO BE SHOWN OUTSIDE YOUR ORGANIZATION NOR USED, REPRODUCED, COPIED OR EXHIBITED IN ANY FASHION UNLESS AUTHORIZED IN WRITING BY AN OFFICER OF CUMMINGS.

CUSTOMER APPROVAL: _____
 DATE: _____

Rev. #	DATE	BY	Rev. #	DATE	BY
Rev. #1	04-24-19	AAAJ	Rev. #4	09-22-20	AAAJ
Rev. #2	09-18-19	AAAJ	Rev. #5	09-30-20	AAAJ
Rev. #3	02-10-20	AAAJ	Rev. #6	10-07-20	AAAJ

ALOFT HOTEL
LOVELL POINTE/LOVELL ROAD
KNOXVILLE, TN

DRAWING NO:
D-ORDER #097355.14
 ARTIST: AAAJ DATE: 02-01-22
 SHEET: 13 OF 13

THIS DESIGN REMAINS OUR EXCLUSIVE PROPERTY AND CANNOT BE DUPLICATED WITHOUT WRITTEN CONSENT