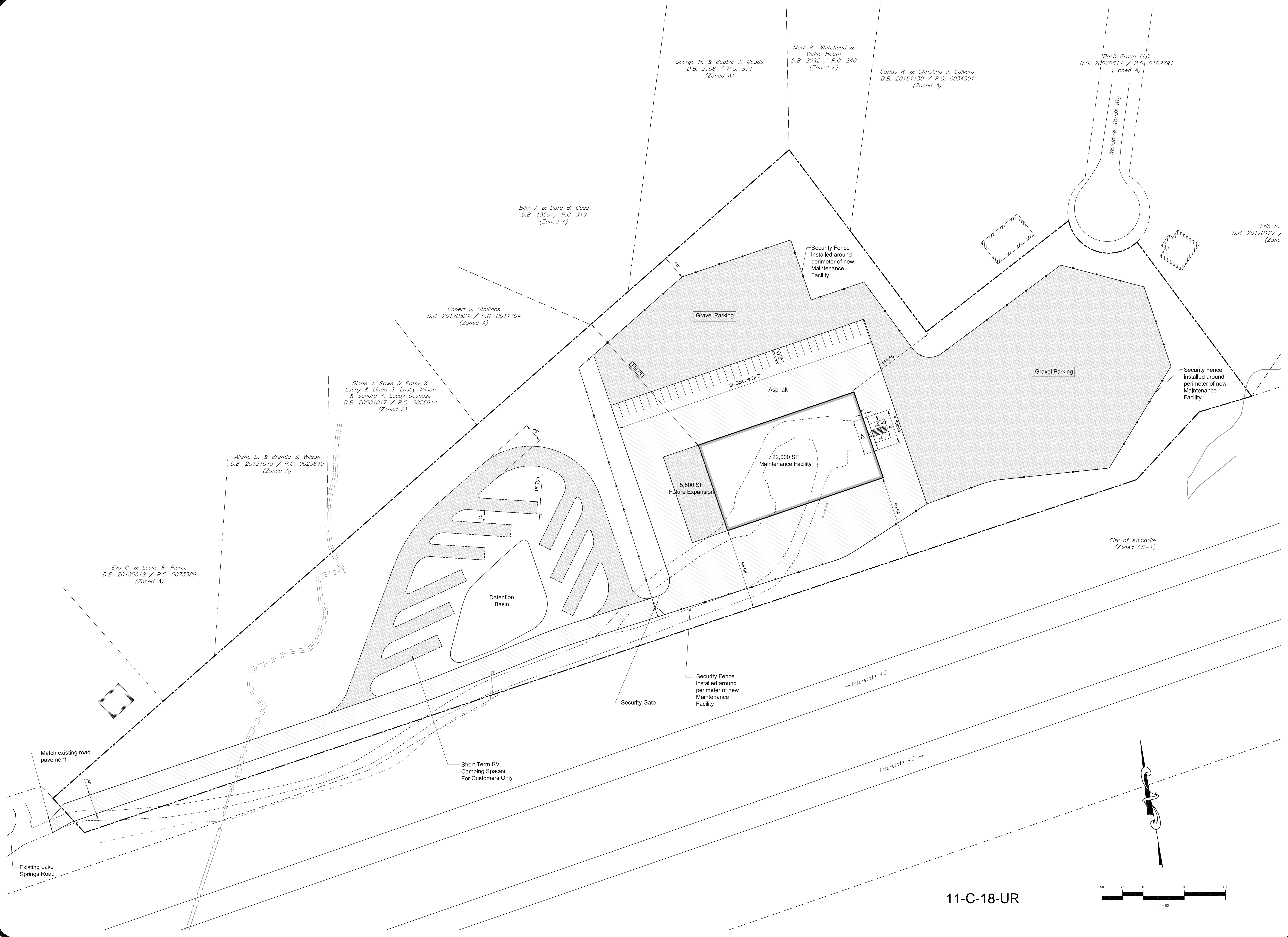
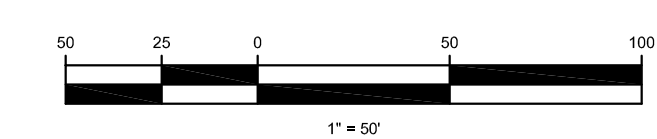


X:\Breck\Tennessee RV\dwg\ C201 TN RV 10 Acre Site - Grading Plan.dwg Sep 24, 2018 - 12:14pm kcaasler - LDS Copyright 2018



11-C-18-UR



Project:  
**TN RV Maintenance Facility**  
 7655 Lake Springs Road  
**Tennessee RV Supercenter**  
 Knoxville, Tennessee

**LAND DEVELOPMENT SOLUTIONS**

310 SIMMONS RD., SUITE K-KNOXVILLE, TENNESSEE 37922  
 PH. 865-671-2281

Drawing Description:  
**Site Layout Plan**

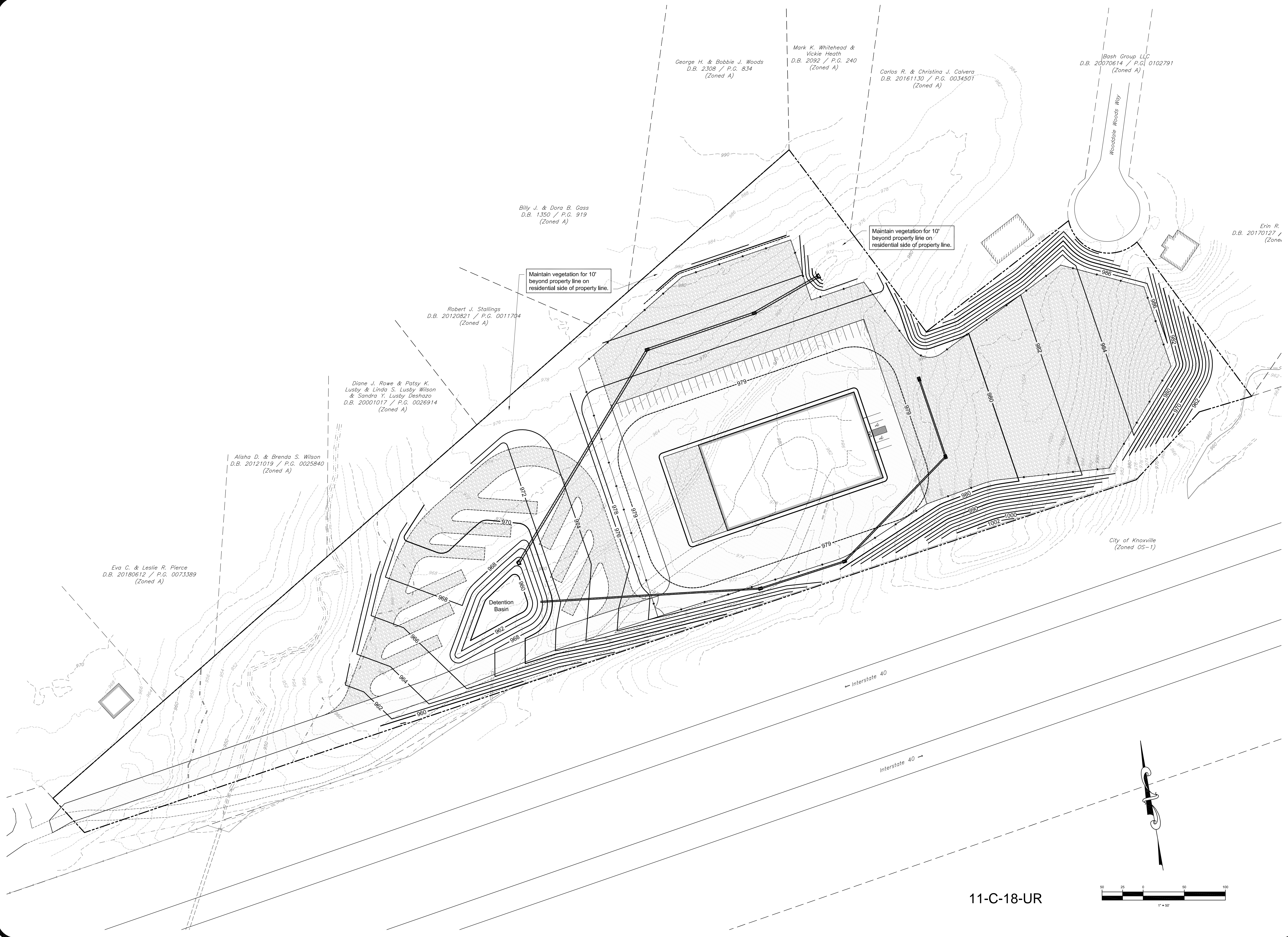
No.	Date	Revision

**Preliminary Not For Construction**

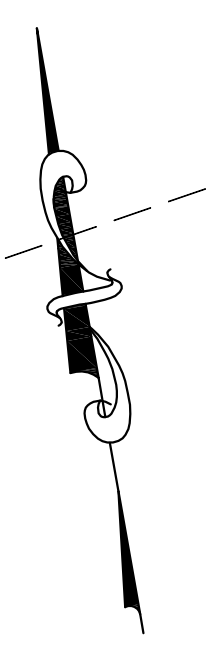
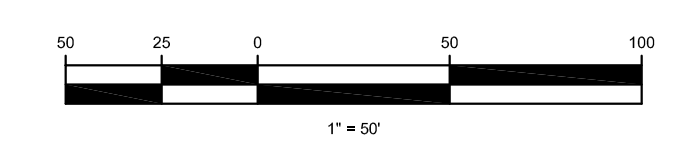
Drawn By	
Checked	
Approved	
Job No.	218086
1"=50' Scale	09-24-2018 Date

**C101**  
 Sheet No.

X:\Breck\Tennessee RV\dwg\C201 TN RV 10 Acre Site - Grading Plan.dwg Sep 24, 2018 - 12:13pm kcasler - LDS Copyright 2018



11-C-18-UR



Project:  
**TN RV Maintenance Facility**  
 7655 Lake Springs Road  
**Tennessee RV Supercenter**  
 Knoxville, Tennessee

**LAND DEVELOPMENT SOLUTIONS**

310 SIMMONS RD., SUITE K-KNOXVILLE, TENNESSEE 37922  
 PH. 865-671-2281

Drawing Description:  
**Site Grading Plan**

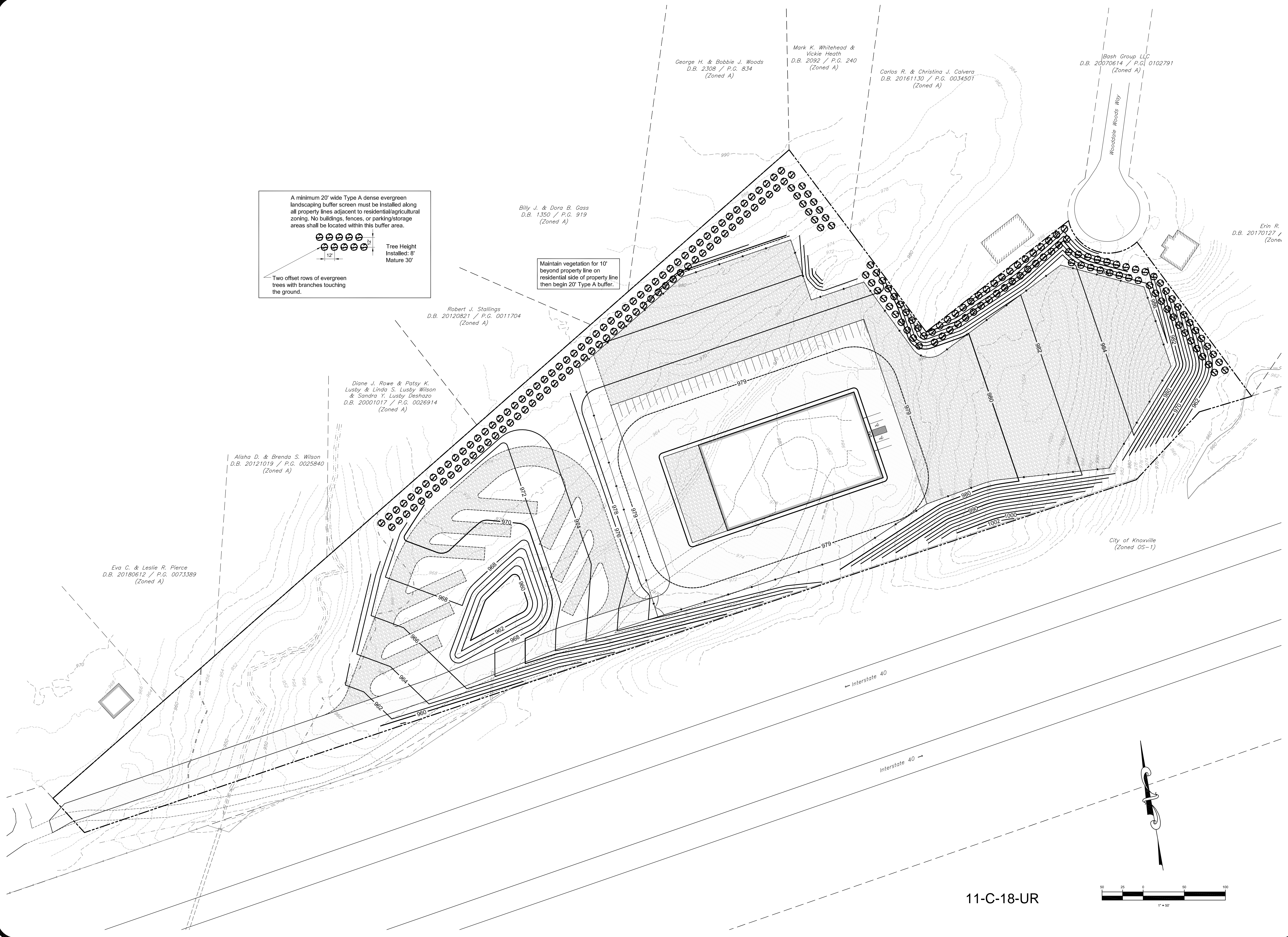
No.	Date	Revision

**Preliminary  
 Not For  
 Construction**

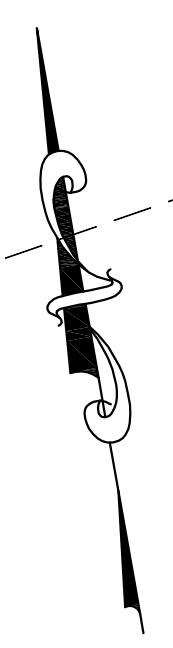
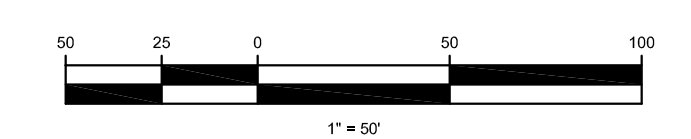
Drawn By	
Checked	
Approved	
Job No.	218086
1"=50' Scale	09-24-2018 Date

**C201**  
 Sheet No.

X:\Breck\Tennessee RV\dwg\C201 TN RV 10 Acre Site - Grading Plan.dwg Sep 24, 2018 - 12:15pm kcasler - LDS Copyright 2018



11-C-18-UR



Project:  
**TN RV Maintenance Facility**  
 7655 Lake Springs Road  
**Tennessee RV Supercenter**  
 Knoxville, Tennessee

**LAND DEVELOPMENT SOLUTIONS**  
 310 SIMMONS RD., SUITE K-KNOXVILLE, TENNESSEE 37922  
 PH. 865-671-2281

Drawing Description:  
**Site Landscaping Plan**

No.	Date	Revision

**Preliminary Not For Construction**

Drawn By	
Checked	
Approved	
Job No.	218086
1"=50' Scale	09-24-2018 Date

**C301**  
 Sheet No.