

TO: Knox Planning Staff  
FROM: JDK Properties, LLC  
RE: Use on Review Application – 0 Cahaba Ln. (Parcel ID: 072 107)  
Date: August 7, 2024

---

The property owner seeks use on review approval at the above referenced property for a commercial mulching operation.

The proposed operation will not be a retail location and no sales of material will be conducted from the property. Traffic, consisting of delivery of raw material (felled trees, limbs and brush) to the site and removal of finished mulch from the site by truck and trailer, will be minimal.

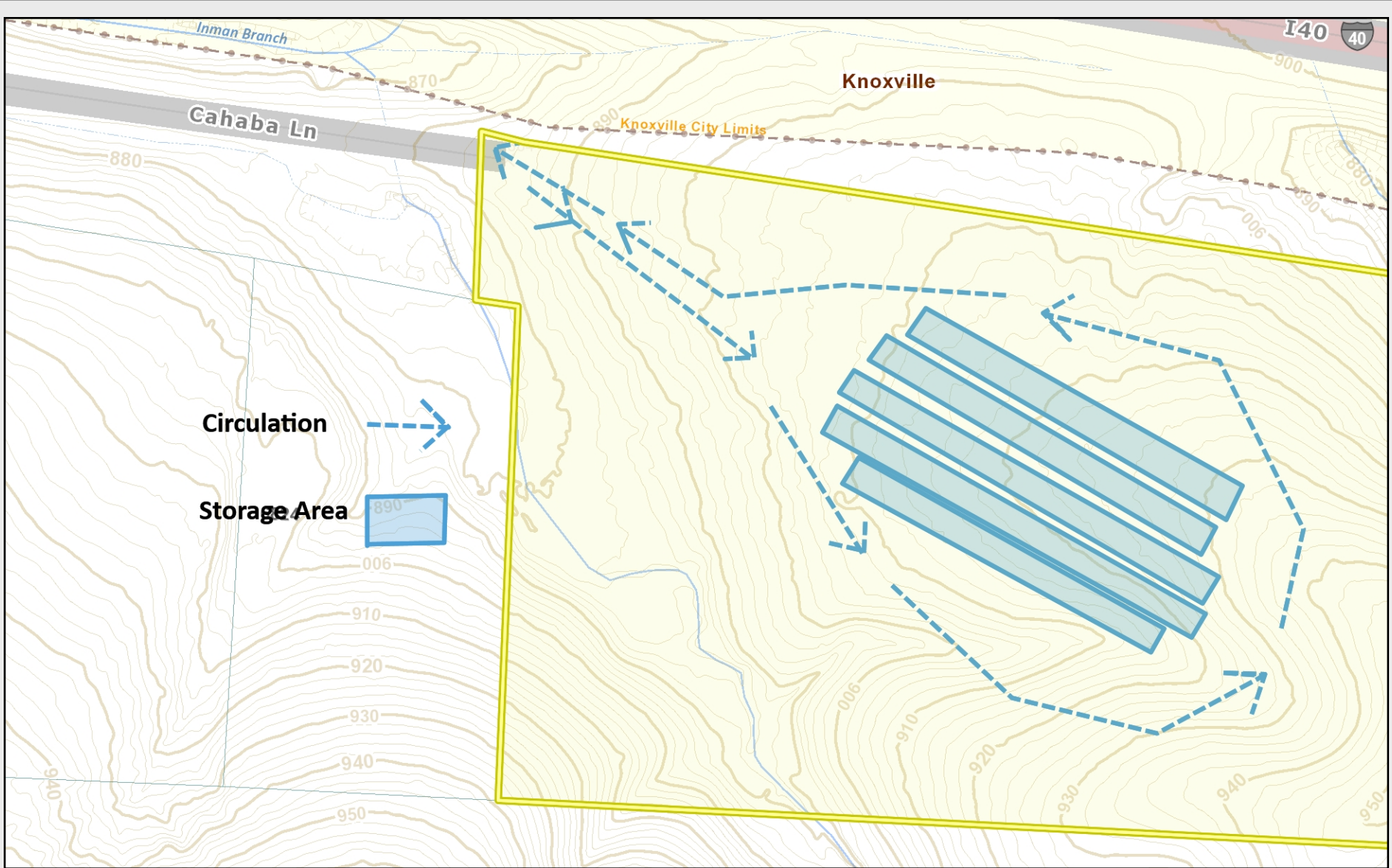
At the property, the raw material will be processed using a portable horizontal Petersen grinder. The ground material is dyed using Colorbiontics dye, which meets applicable environmental requirements.

Other than the portable on-site equipment used in the loading and unloading of raw material and grinding and dyeing the mulch, no other facilities are required for operation. Ground material will be stored in rows until it is removed from the site by truck and trailer.

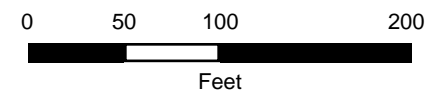
The site will operate on a Monday through Saturday schedule, from 8 a.m. to 5 p.m., during daylight hours. However, there will be no operations conducted most Saturdays.

The site requires no lighting, no septic and no sewer. Additionally, there will be no structures constructed on the site. This operation is designed to be low-impact to property and the area surrounding it.

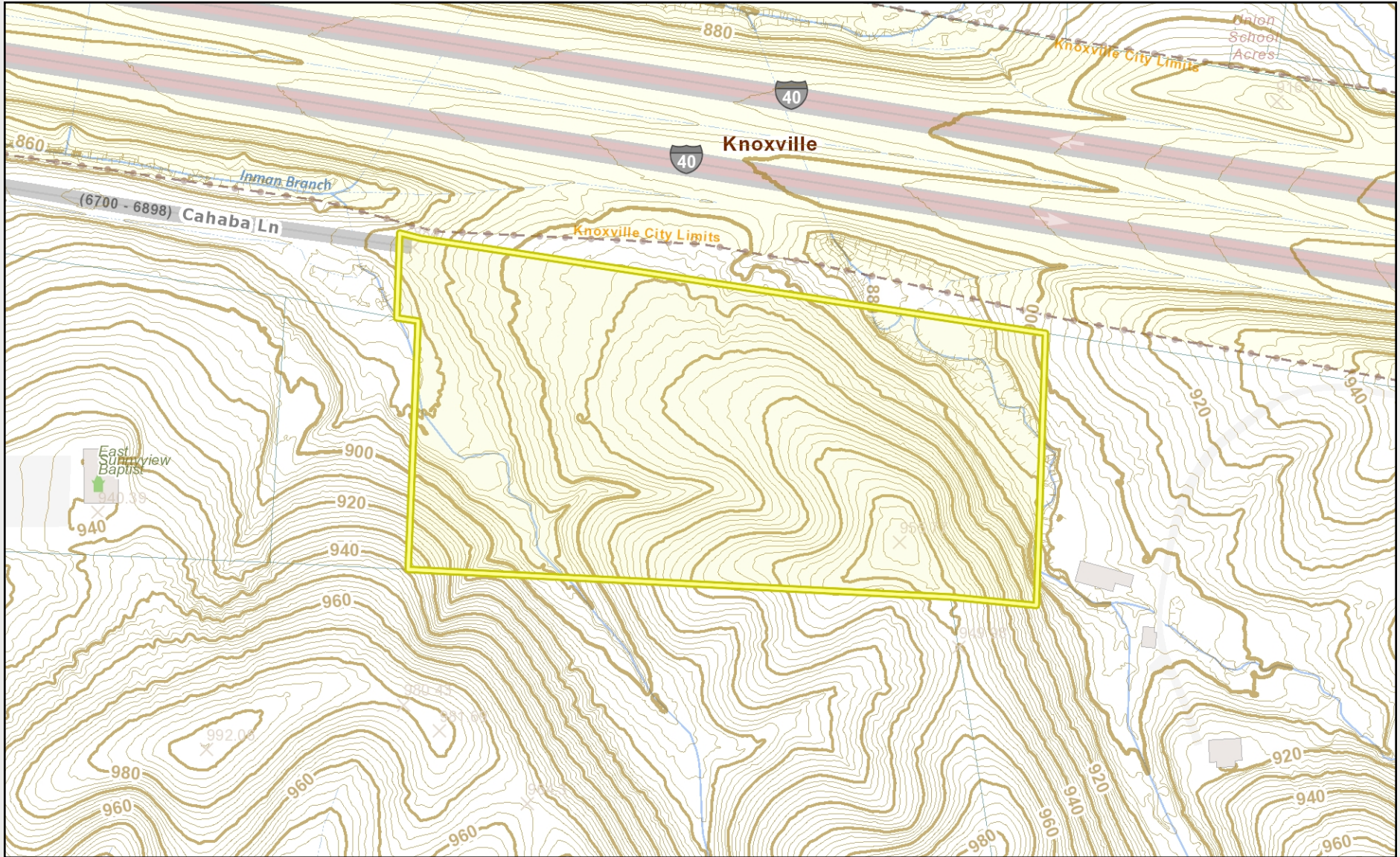
Included with this application is a topographical map at the 2' level, as well as a map showing approximate on-site traffic pattern and location of temporarily stored raw and processed material.



0 Cahaba Ln - Parcel 072 107  
Circulation & Use diagram

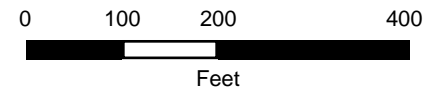


KGIS makes no representation or warranty as to the accuracy of this map and its information, nor to its fitness for use. Any user of this map product accepts the same AS IS, WITH ALL FAULTS, and assumes all responsibility for the use thereof, and further covenants and agrees to hold KGIS harmless from any and all damage, loss, or liability arising from any use of this map product.



0 Cahaba - Parcel 072 107  
Topo at 2' increments

Notes



KGIS makes no representation or warranty as to the accuracy of this map and its information, nor to its fitness for use. Any user of this map product accepts the same AS IS, WITH ALL FAULTS, and assumes all responsibility for the use thereof, and further covenants and agrees to hold KGIS harmless from any and all damage, loss, or liability arising from any use of this map product.

© KGIS 2024

Printed: 7/23/2024 3:31:10 PM